



Get Ready
VIDEO CONTEST

THE PITCH

The Mountain
GAZETTE

© Copyright 2014, Train Mountain Railroad

An Official Publication of the Train Mountain Railroad Issue: Vol. #3 Issue #9 April 2014

From the President - Tom Watson

There was no Board of Directors meeting during March, as no agenda items were submitted to the Board that could not be resolved via email. The volunteers at Train Mountain are now working on preparations for upcoming events.

Since Train Mountain operates with funds from memberships and meet fees, we need everyone to renew their Train Mountain memberships for 2014 as soon as possible. The volunteers who must process the renewals would like to get the paperwork done soon so they can go play trains when the weather improves rather than be stuck in the office all year.

The weather is getting better. If you are not doing anything we could use your help anytime you are free. To have a fun run season without a lot of derails, we need to clear the right of way of pine needles and other debris, to repair and tune track, and for the modelers out there we have painting and repair of the miniature buildings needing attention. We really need everyone's help to get the railroad ready for the running season. The local volunteers cannot get it all done without help.

Weather permitting, we are already out there starting this work. Anyone with spare time is encouraged to come and help with the chores any time. It does not need to be during a work week or meet.

On April 13, 2014, Train Mountain hosted a Union Pacific meeting of the signals division. Seventy five UP signal supervisors and workers were in attendance. The significant thing about this particular meeting is that the meeting was run by the Director of Signals for the entire UP Railroad, who came out from headquarters in Omaha, Nebraska.



It was interesting to look at the license plates on the UP trucks parked at TM, they were from most of the states where UP operates. This event gave TM great exposure to railroad employees from several states. Those we talked to were quite impressed, and some are hoping to get back to TM to see more.

The large group is in the area to do the cut-over to PTC (Positive Train Control). UP has their best crews in the area, as this must work the first time when they switch over. They are working their way south from Oak-

2014 Train Mountain Train Meet Schedule							
	Kitsap Week	Spring Awakening	Narrow Gauge	Operations Meet	August Meet	Big Build Meet	Fall Colors
Work Week	4/13 to 4/19	5/3 to 5/8	5/24 to 5/29	6/21 to 6/26	7/26 to 7/31	8/30 to 9/4	No Work Week
Meet	No Meet	5/9 to 5/11	5/30 to 6/1	6/27 to 6/29	8/1 8/3	9/5 to 9/7	10/10 to 10/12

ridge toward Klamath Falls. They have cut several blocks over in the past week, all successfully.

We are expecting large rail crews (200 man) and large tie crews (200 man) in the next couple months, as there is significant track repair to be completed before the final blocks can be cut over to PTC. Thus, we are hopeful that many more railroad employees will come to Train Mountain over the next few months.

Our website statistics show we had 1,599,157 Hits and 247,128 page views for March 2014. We reached 10,825 unique visitors, and we had 42,172 total visits. These stats are down from during the run season of last year, but slightly better than February. For the 2014 run season, I expect even more website traffic than we had in 2013.

Our visitors continue to like pictures far and above all else. It appears they really like pictures with trains the best! For this reason, I recently uploaded several hundred historic Train Mountain, Over the Hill and Mercedes & Western (Now Klamath & Western) Images to the Gallery. Be sure to take a look. Have patience as we get the images organized, as it is very difficult to organize scanned images that have no dates or meta-data. We know that some are in the wrong albums.

Social Media News - Chris Donhost



Welcome to the 2014 Train Mountain Promotional Video Contest! For over 30 years "Live Steamers" have made the journey to Chiloquin, Oregon for fun railroading action with their friends and family at Over The Hill Live Steamers (now Klamath & Western) and Train Mountain. Throughout those years, visitors have brought their cameras and taken thousands of videos and photos. Now is the time to share those precious memories. Just as in the reality TV show "The Pitch," contestants are invited to compete for the best promotional video of Train Mountain Railroad. Using your creative ideas and skill, the objective of the contest is to encourage people to visit Train Mountain. The winning videos will be used to promote the 2015 Triennial through the Train Mountain YouTube channel and other social media sites and forums. The Grand Prize includes 2015 Triennial registration, membership, lodging and more! Please visit www.tmr.org and click on the Video Contest link for all the prize details and how to enter. Good Luck!

Video Contest Page Link:

<http://www.tmr.org/pages/videocontest/VideoContest.shtml>

Contest video link:

https://www.youtube.com/watch?feature=player_detailpage&v=7XsngqBGyN8

The Scouts Are Coming - Jim Armstrong

Update on Scout's May Camporee at Train Mountain

Just to remind you, the Klamath County area Boy Scouts are coming to Train Mountain the weekend of May 16th through 18th to attend their Spring Camporee. They will be setting up their base camp in Six Acre Campground and participating in various activities throughout the weekend.



Last month I asked that anyone interested or available to assist that weekend to please contact me – the response was underwhelming. Only four members expressed a direct interest and most of those were local residents.

If we get the necessary volunteers and equipment, the plan is to have a Friday evening train ride around the K&W track for the expected 100+ scouts and their leaders, then have 8 to 10 trains at the ready to do a pine needle clean-up on Saturday morning, followed by several competition activities sponsored by TM during a round-robin event for the scouts on Saturday afternoon.

Boyd Butler is helping me organize the Saturday pine needle clean-up (the scouts will be doing the raking, loading, and unloading of the needles as their community service project for the weekend). Each train will

have several needle cars and the necessary riding cars (thanks to TM and K&W) but the members will need to furnish the locos, engineers, and conductors that morning. We also need to borrow a number of rakes and forks for a project that big since TM does not have that large of an inventory of these tools. Put your name on your tools, drop them off at the office before Friday, May 16th and I'll see that they are returned to you or the office on Sunday, May 18th.

Margaret Hope, Russ Wood, and I have developed four (4) competitions for Saturday afternoon and are waiting for the scout leaders to tell us which ones they can use in their rotation. It looks like we have sufficient volunteers for the competition events but everyone is welcome to observe the boys as they try to "figure things out".

If you are able to be at TM during the weekend of May 16th through May 18th and can volunteer to help along with Jim & Sabra Rickman, Boyd Butler, Margaret Hope and her guests, Steve Panzik and some of his K&W crew, and my family, please send me an email (armstrong.jandq@gmail.com) or give me a call at 208-484-0073 to add your name to the list of volunteers for this "first" at Train Mountain.

Thanks in advance for your help,

Your Help Is Needed: - TMRR

Equipment Operators needed at the Spring Awakening Work Week and Train Meet.

[Click here for details.](#)

PHOTO GALLERY

With the first break in the winter weather the track gang is out and about tweaking the railroad back into good shape. Dennis and Charlie use our track mirrors to align things up after fixing the broken rail joiners and tightening the screws. They also swapped out a few really bad ties.



The track is now looking much better. Richard and Dustin have a really good start on the retaining wall at Little Falls that needs to be completed before we relay Hairpin Curve.. Just need some good weather to get er' done!



PHOTO GALLERY

(continued)

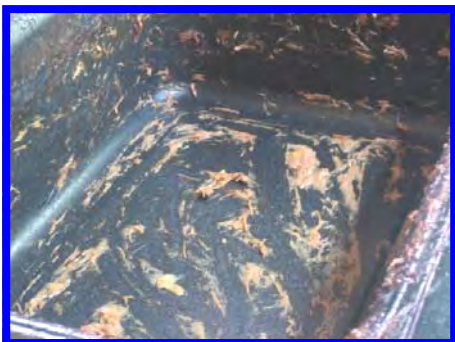
The Kitsap Krew is here for their annual visit to help get us going. Without these folks coming down every year we would be hard pressed to get ready for the running season. They take on any project suggested to them and so much more. We cannot thank them enough!



Part of the reason the UP folks keep coming back for all of their meetings is of course the great cuisine supplied by our 'world' famous kitchen crew. Thank you ladies! This group came in pickups instead of the regular work trucks we are used to seeing. Interesting sidebar was there was at least one license plate from each state that UP operates in!



Did they like the food? Well this pix shows all that remains of the lunch that was served! Every good project needs a supervisor or two so we had a couple of guys try out for the position, what do you think? The last picture is the rebuild of the Rio Grande F units completed by Bert Newberry and financed by the Klamath and Western Railroad. They will be used at both locations for hauling guests around the property.





If you have never been a member of Train Mountain
You Are invited to
VISIT TRAIN MOUNTAIN
For FREE!

RUN YOUR EQUIPMENT FOR FREE This Certificate gives bearer a one-time opportunity to bring their 7.5" gauge equipment to run on any of Train Mountain's 35 miles of track. Your visit may last up to 10 days, including any of the Meets. Normally only Train Mountain members are allowed to run their equipment on Train Mountain Track. Safety chains and current boiler certificates required.

2014 Train Mountain Train Meet Schedule							
	Polar Bear Meet	Spring Awakening	Narrow Gauge	Operations Meet	August Meet	Big Build Meet	Fall Colors
Work Week	No Work Week	5/3 to 5/8	5/24 to 5/29	6/21 to 6/26	7/26 to 7/31	8/30 to 9/4	No Work Week
Meet	1/17 to 1/20	5/9 to 5/11	5/30 to 6/1	6/27 to 6/29	8/1 8/3	9/5 to 9/7	10/10 to 10/12

Certificate expires **Dec 31, 2014**. Certificate has no Cash Value. Participants must sign a standard Train Mountain Liability Release. **Not valid for anyone who has been a member previously.** Train Mountain Membership is only \$50 a year individuals, or just \$75 a year for families. Train Mountain wants more people to see Train Mountain and become members.

Worlds Largest Ride-on Model Railroad
over 35 miles of track

Train Mountain, PO Box 438, 36941 South Chiloquin Road, Chiloquin, OR 97624-0438
www.TrainMountain.org 541-783-3030

PHOTO GALLERY
(continued)

We start em' young at Train Mountain! The Bentsen kids at play!



It appears when we were working on the septic system we re-arranged some track! Oops!

CLASSIFIEDS

Building Lots For Sale!

Train Mountain member has 4 nice home / vacation building lots for sale.

Prices reduced! Lots are located in an established subdivision just a few minutes from Train Mountain. Home owners association provides free water and well maintained all-weather roads. Lots range in size from .7 acre to .25 acre, all lots have phone and water to the lot,

1 has power to the lot, power close by the other 3 lots.

Cash or short term contract.

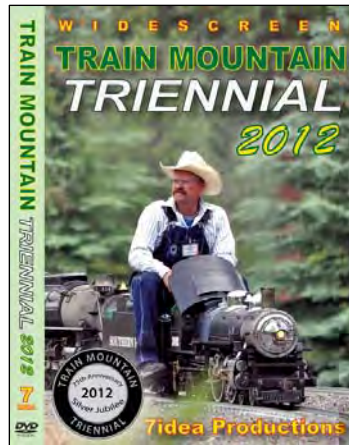
Priced from \$7,000 to \$8,500 (below tax value).

Call owner at 360-673-2277 or 360-703-7063.

The terrific video that Aaron Bentsen from 7Idea Productions shot at the 2012 Triennial is available through the main office at Train Mountain. Give them a call at 541-783-3030 and get your on the way to your place. It's \$30 for the video and \$3 shipping and handling lower 48, \$4 S&H for all others. A most enjoyable video shot by a true video artist and of course our favorite subject, Train Mountain!

Our good friend Jim over at **Discover Live Steam** has also placed ads for us on his terrific website, thanks Jim.

www.discoverlivesteam.com



Did you see the great article and front cover story from the January / February 2013 issue of Live Steam and Outdoor Railroading? It is a most complimentary article about the facility and the great gang of folks that hang around the place and put on terrific live steam train meets. Pretty cool!

www.livesteam.net/home



HAVE SOMETHING YOU WANT TO SELL?

Place an ad in the Gazette!

1/8 Page: \$25/month or \$250/year

1/4 Page: \$40/month or \$400/year

1/2 Page: \$70/month or \$700/year

Full Page: \$125/month or \$1250/year

Published by **Train Mountain Railroad**

P.O. Box 438

Chiloquin, OR 97624

Email: info@tmrr.org Phone: 541-783-

Contributors: TMRR BOD, Friends, TMI

Photos: Tom Watson

