



## Train Mountain Institute

sponsored a very successful Operations Meet using cutting edge technology

# The Mountain GAZETTE

© Copyright 2014, Train Mountain Railroad

An Official Publication of the Train Mountain Railroad - Issue: Vol. #3 Issue #12 July 2014

## *The OPS Meet*

for 2014 had the largest turnout ever for an OPS Meet, and a good time was had by all.



### **Mementos from the 2014 Ops Meet - by Jim Armstrong**

This year's Operations Meet sponsored by Train Mountain Institute to help educate the participants on how full sized railroads work, was the largest one yet! Over 135 people attended the banquet on Saturday night to partake of a wonderful meal and express their support for a 2015 Ops Meet, even with the Triennial just a few weeks prior.

John Lovely's time tabled passenger train and mail delivery experience was enjoyed by many while the freighters moved over 200 cars throughout Train Mountain during the two day event.

The most exciting new feature of Ops this year was John Cooper's electronic dispatch board. Instead of using paper maps and magnets for the locos, John introduced his newest programming adventure which showed all active trains moving around the railroad on two large monitors for everyone to see. In fact, you could see it on the internet, if you knew the right URL and password. John's already working on several improvements for next year's Ops meet.

A special thanks to those that allowed their rolling stock to be used during the meet, they were: TMI, Steve Panzik, Richard Croll, Chuck Barnes and his Turlock group, Steven Henderson, Dennis Ward, Bill Kludt, and Jim Armstrong. If future Ops meets continue to grow, we will be looking for additional rolling stock to be added to the current mix.

Also, a big Thank You goes out to all the volunteers that helped with dispatch, control tower, car inspections, car sorting, car setout, Sunday car wrangling and sorting, and other meet preparation tasks; the event could not happen without all your help.

All in all, it appeared the meet was another success based on all the smiles seen throughout the weekend.

## **Make Your Track Donation Count Twice - by Jim Armstrong**

As you know, Train Mountain's funds are quite limited this year due to the many facility improvement projects that have been completed or are nearing completion.

With this year's Big Build and next year's Triennial, we need your help with track and track building expenses to complete Hairpin, Aspen to Witcombe, and other needed track repairs.

Thanks to Carl Vanderspek and Marg Hope's continued commitment to Train Mountain, they will be matching all member donations made to Train Mountain Institute or Friends of Train Mountain toward track and track building supplies with a dollar for dollar match up to \$100,000.00. This means when you make a donation to the track fund, Carl and Marg will match that donation thus doubling your contribution!

John Black has also forgiven the \$10,000 that Friends of Train Mountain owes him for the track and plastic that he had previously purchased for this year's projects.

With these personal financial gestures along with your generous donations, Train Mountain will have the funds to complete the necessary track work in order to hold a safe and successful 2015 Triennial.

Please send your donations to Train Mountain Institute at Train Mountain. If you are a US tax payer, your donations to Train Mountain Institute are tax deductible to the extent the law allows.

Thank you for helping maintain and improve Train Mountain as the World's Largest and Best Miniature Train Park.

## **TMRR ANNUAL MEETING -- by Tom Watson**

The Board has established the September Meet --- The Big Build --- as the TM annual meeting. At this meeting, TMRR will re-elect its officers. Officers are elected by the board from the board members. Officers serve 1 year terms. The idea is that the new officers have the winter to get organized for the next season of Meets.

## Help Train Mountain Plan for the Future - by Jim Armstrong

During the June Town Hall Meeting, the TMRR Board was asked by members how they could help with tasks that need to be addressed outside of the on-site tasks that are currently being done.

Here is your opportunity (from the convenience of your home) to have a direct hand in helping Train Mountain plan for the future and be prepared for dealing with natural or man caused threats, growing Train Mountain in an organized and efficient way, and managing several of the constant maintenance issues that inherently come with a facility the size of our campus.

As part of TMRR's Cooperative Agreement and Memorandum of Understanding for Train Mountain, we need to develop seven plans and have them in place by May 2015.

Some of these plans are already under development but others have not yet been initiated.

Some of these needed plans already have committees formed and some have chairpersons in place. The committees will be charged with developing the plan, getting approval from the TM Boards, and then taking steps to manage the implementation and on-going tasks of the plan.

The seven plans and associated committees are:

- Fire Protection Plan – committee is co-chaired by Jeff Mills and Courtney Jones
- Track Maintenance Plan – committee is not yet organized
- Security Plan – committee is not yet organized – this would also include Safety and Training issues
- Facilities Maintenance and Grounds Keeping Plan
  - ◆ Currently, this plan has two committees
    - Jerry Crane is in charge of Facilities Maintenance – committee is not organized
    - Debra Cox and Larry DaBroi co-chair the Grounds Keeping Committee
- Museum Plan – committee is co-chaired by Steve and Pam Panzik
- Equipment Usage Plan – committee is not yet organized
- Web and Technology Plan – committee is chaired by Tom Watson

All seven of these plans and associated committees can be staffed and operated without being on actual Train Mountain property – thus anyone can help with the plan building and on-going functions of these vital committees. The TM Boards will help you with questions and initial direction once we have a chairperson and the committee becomes active.

If you are willing to get involved, have a voice, and make a difference here at TM, please contact any TMRR Board Member or send an email to [info@tmrr.org](mailto:info@tmrr.org) and let us know you care and are ready to help! Thank you.

# TRAIN MOUNTAIN REPORT - by John Black

## FREE RIDING CARS

Many members really enjoy showing off Train Mountain. TM is making it easier for members to take guests to see Train Mountain. Beginning immediately, TM Riding cars will be parked in front of Central Station during the summer months. If you want to give a guest a ride and need a riding car, please use these riding cars for free.

Normally the riding cars are stored in the Backshop. If there are no riding cars in front of Central Station, the office can get more brought out quickly.

Train Mountain operates a closed track. The track is only open to members, guests of members, and people participating in educational activities organized by Train Mountain Institute.

K&W offers rides to the public on Saturdays... Memorial Day to Labor Day.

Many railroad enthusiasts visit TM. Some take the K&W public ride. Many want to see more of TM. Those that see Train Mountain may want to join the hobby.

We hope that the free riding cars will help you show Train Mountain to your guests.

## ORGANIZATIONAL IMPROVEMENT

We are trying to make Train Mountain function better. We are defining areas of responsibility and putting someone in charge of each area.... naming Leaders.... just like we do when we organize the Triennial. Some things are projects with short durations and some things are areas of responsibility where we plan to ask people to take the responsibility for a year. We plan to list the Leaders in the Gazette and advertise in the Gazette for help that we need. Stay Tuned.

## COURT CLOSES VERTEL v BREEN

On June 17th Judge Rambo of the Klamath County Circuit Court signed the General Judgment which completed the process of making Train Mountain owned by Train Mountain Institute. In the Judgment the court :

- Approved the report of Friends of Train Mountain as Custodian
- Allowed the abandonment of the properties in Chiloquin which the IRS will foreclose on.
- Declared Train Mountain Institute to be the successor in interests (owner) of Train Mountain.
- Dismissed all claims, counter claims, and cross claims with prejudice.

This completes the process of making Train Mountain owned by Train Mountain Institute and finishes that court case.

We all thank Friends of Train Mountain for its role as Custodian and its handling of this legal case.

## **STATE APPEALS KLAMATH COUNTY REZONE**

Train Mountain applied to create a new Train Park Zone which allowed a Train Park Support area of about 40 acres around Central Station and a community of track connected homes on 2+ acre lots on 129 acres on the west side of Train Mountain. Klamath County unanimously approved the application. The State of Oregon has appealed the approval to the Oregon Land Use Board of Appeals. Train Mountain has hired Perkins Coie to handle the appeal for TM and the County. Our expectation is that this process will take at least 6 months.

## **BIG BUILD**

The Big Build meet is coming.... Aug 30-Sept 7. Every Year in September, Friends of Train Mountain sponsors an all out effort to build and repair Train Mountain. The overall build is led by John Black. This year we have 3 priorities:

- Klamath & Western - Led by Richard Cox
  - Replace 72 outside Rails on Curves
  - Replace 16 aluminum on wood Switches
  
- Hairpin - Led by Dennis Ward
  - Lay 2400' of track
  
- Witcombe to Aspen - Led by Mark Flitton
  - Lay 4400' of track

This is a huge challenge. On July 1st, here is what we need to do to get ready for the Big Build:

Richard and Dustin need to finish the Grade Witcombe to Aspen. We hope to finish this in early August

We need to build 50 straight panels of aluminum rail on plastic ties

We need to build 50 165' radius panels of steel rail on plastic ties

We need to move the following panels from the hill behind Shepherd's house to someplace beside the track. Move only this list... leave the rest... stack in stacks 5 high near to the track.

Steel on Plastic :  
89 Straights  
20 165s  
53 90s  
Aluminum on Plastic track  
52 Straights

We need to trim the trees along Witcombe to Aspen with the 65' man lift.  
Sherri & Jim Beauchamp will work on this starting Saturday the 5th.

We need to raise \$15,000 to pay for plastic and ballast.  
Immediately we need to order  
about 50 cu yds of Ballast for Hopper by Containers  
100 cu yds of Ballast for Hairpin  
60 cu yds dumped near road near Robinson Siding

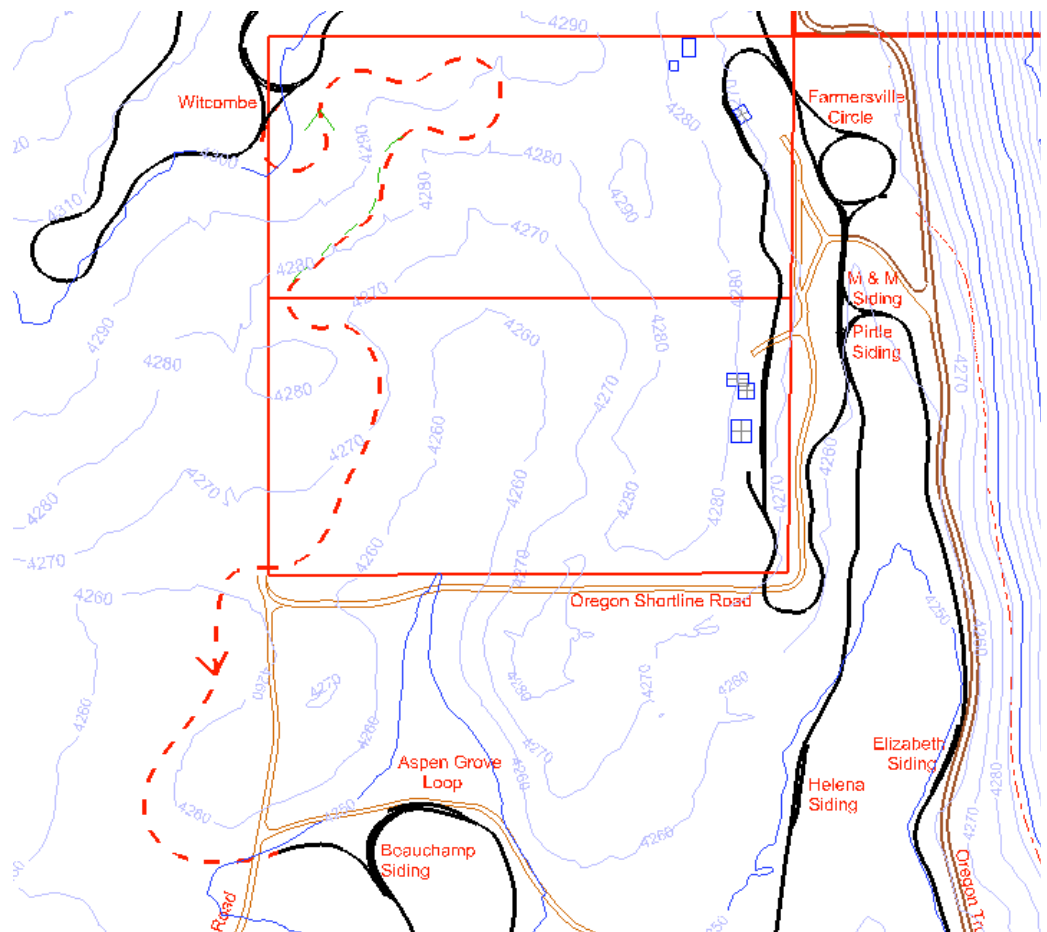
By Aug 1 we need to order :  
4000' of 12 mil plastic 8' wide \$6080  
325 cu yds of Ballast for Witcombe to Aspen

During the Big Build we will need to haul a lot of track ...  
680 track panels.... 136 carloads.... 34 train loads  
25 Switches

We have very few 165' radius track panels so 150' radius track panels will need to be used in most cases.

We want Klamath and Western to be our safest track. We want Hairpin open and Witcombe to Aspen open by the Triennial.

Dotted Red Line is the  
Witcombe to Aspen track  
we want to lay.



## **TM GETS SERIOUS ABOUT FIRE HAZARD -- Closes all of TM to non-propane fired steam engines starting immediately after 2015 Triennial.**

The primary duty of the 3 boards that run Train Mountain is to protect the asset. The boards have noticed that May was the driest May in recorded history. For the year Chiloquin has had 16" of rain vs a normal 26" of rain by this time of the year. The fire hazard is getting worse. California is suffering from a drought. It is Dry.

TMRR has established Fire and Safety as a regular agenda item in their Board meetings. We are looking at establishing fire breaks and severely limiting all open flames at TM.

All 3 of the boards (TMRR, Friends, and Institute) have voted unanimously to close Train Mountain to non-propane fired steam engines starting immediately after the 2015 Triennial. The area north of S. Chiloquin Road has been closed to non-propane powered steam for about 5 years. Most TM members have converted to Propane to run up north. This gives almost a year for anyone that has not converted to get switched to propane.

We all recognize that this hobby started with coal fired steam and we hate having to abandon the roots of the hobby, but we need to address the fire risk.

One of the big dangers is a fire that starts in South Meadow, Midway, or any of the lower elevation areas south of S Chiloquin Road. If the winds are from the SW. Fire that reaches the base of the hill will race up that hill and be very hard to stop. Once it gets to the top of the hill all the buildings are at big risk. Our ability to fight such a fire is very limited. We have to limit the risk.

## **Hot August Deals -- by Tom Watson**

At the June BOD meeting, TMRR decided to give the August Meet a new theme. This followed many requests for a swap meet for the members and their guests at Train Mountain.

During the Work Week (July 26 to July 31) and The Train Meet (Aug. 1 to Aug. 3) Members and their Guests may bring items to sell at our first annual **Hot August Deals** train equipment swap meet. The theme at Train Mountain is Trains, however we do not care what you bring to sell providing you clean up after yourself and all swap meet items are removed from Train Mountain property when you leave.

Train Mountain will **NOT** provide any tables or chairs. You must bring whatever you need to set up your swap meet booth. If you want to lay your stuff out on the ground, you may do so. If you want a table, you must bring your own table. If you want chairs, you must bring your own chairs. If you need shade, you should bring a shade canopy.

You may set up in front of the Vendor Barn, but not inside the Vendor Barn. You may set up in the Six-Acre Picnic Area, or on the lawn behind the Pullman Car and near the Campfire Pit.

There is no set-up fee for the swap meet.

## **From The President -- Tom Watson**

It has been a busy month at Train Mountain. Really great to see so many Members and Guests not only attending the meets, but staying all summer.

We are in the process of preliminary organization for the 2015 Triennial. The plan is to have a Triennial meeting during the work week of the Hot August Deals Meet and the Big Build Meet. The Committee Chairperson list is now being filled. Anyone interested in volunteering for one of the positions please contact the Office. Presently almost half the positions have been filled, but there are still many positions available. Time permitting, I will be posting the Chairperson list on the website soon.

Most of the TMRR Board Minutes are now available on the website at this link: [http://www.tmrr.org/pages/docs/tmrr\\_bod\\_minutes.shtml](http://www.tmrr.org/pages/docs/tmrr_bod_minutes.shtml). Any missing minutes will be added when obtained.

We are continually in need of docents to show guests and visitors around Train Mountain. If you are running at Train Mountain and have an empty seat on your train, please offer rides to guests and visitors.

Due to a lack of sufficient volunteer staff to man the office and ensure the safety and security of Train Mountain during non weekday business hours, the main gate will be closed after hours and on weekends unless there are sufficient volunteers available to supervise visitors. Therefore, when you invite a guest to Train Mountain, you will be responsible for your guest(s) and must make sure your guest(s) sign a Participant Release. If your guest arrives when the gate is closed, you are responsible for letting your guest through the gate. If you allow another person to enter Train Mountain when the gate is closed, that is not a member, you are responsible to ensure that person goes directly to the office and completes a Participant Release and is supervised while on the property.

We would like to encourage visitors at TM, but there are times when we must tell them to return during regular hours. Please be respectful when dealing with visitors, and if you do not have time to show them around, take the time to explain there is no one here to show them around at the present time.

Office staff have received complaints of members, guests and visitors experiencing disrespect. I would encourage everyone to re-read and follow the Train Mountain Code of Conduct. [http://www.tmrr.org/Resources/policies\\_procedures/Code\\_of\\_Conduct.pdf](http://www.tmrr.org/Resources/policies_procedures/Code_of_Conduct.pdf)

We are all in this together. We must all work together. We do not have paid staff to take care of our wants and needs. We are all volunteers. Everyone must pitch in and help.



## **Train Mountain is a NO SMOKING Facility**

**During recent events, many Members and their Guests have been ignoring this policy. There are only three designated smoking areas at Train Mountain:**

- (1) Outside the front of the Backshop**
- (2) Outside the east door of the Hall of Flags**
- (3) Outside the Motor Pool (Maintenance Building)**

**Due to the high fire danger at Train Mountain during the summer, we have zero tolerance for anyone smoking outside one of the designated areas.**

**There is NO SMOKING anywhere out on the track!**

**Members, Guests, and Visitors that continue to violate the Train Mountain Smoking Policy may be asked to leave.**

### **Youngstown Chronicle -- by Chad Terbocks**

This Fall's new school marm, Abigail Rainwater, has recently arrived in town and is looking for suitable housing while waiting for renovations to be completed on the house provided by the school board. She declined an offer for one of the rooms above Daffodil Station (which houses the Fed-Ex office) after learning the owner of the building was the owner of the Chateau DaBroi Winery, a man who claims to be a former dentist!

Residents are pleased with the beautification program recently started in Youngstown. However, Ms. Rainwater has expressed concern about the barnyard odors from the dairy located so close to her school.

Sheriff Izzy Guilty, son of Judge Ulysses R. ("UR") Guilty, is looking for two motorcycles that recently disappeared from the newly painted gas station owned by Reggie and Ethyl Moregas. A substantial reward will be offered for information leading to an arrest and conviction.



Although the sawmill was able to receive several train car loads of logs recently shipped from the logging camp near Steuer, there is still a shortage of logs in the area.

Alec Tricity, manager of Blackout Electric, reports that he expects the rates to remain stable for the rest of the summer.



## Lillyville -- by Seymour Skandals

During the recent OPS Meet, we had a bit of confusion with freight shipped to the McDonalds. It seems that "Old McDonald" lives in the Lillyville area, and his son "McDonald" lives near Youngstown.

The railroad ticket agent reported that many passengers traveled to Lillyville, and three never left increasing the population by three. One of those, Candice B. DePlace, is trying to decide whether or not to settle permanently. The freight agent reported 3 pickups and 4 deliveries. A shipment of cattle went out to Weldon Sausage company and also some fertilizer was shipped, while farm equipment and grain for the livestock arrived. The agriculture industries are booming.



The Lillyville City Planners have announced that a building permit has been issued to the Reverend Dale E. Bread for the construction of a church. It is unsure if the blue collar workers are sufficiently organized to build a saloon in Lillyville. A temperance group continues to march against drinking in Lillyville, and were heard singing "Come Home, Father!" While at the other end of town the men were at something called "Beer-Thirty" singing "99 bottles of beer on the wall," and shouting, "Just where do they think they'll get the workers to build their church?"

# PHOTO GALLERY

Photos by: Tom Watson







# WEB-CAM GALLERY

Photos by: The Web-Cam



# WEB-CAM GALLERY

Photos by: The Web-Cam



# WEB-CAM GALLERY

Photos by: The Web-Cam





# WEB-CAM GALLERY

Photos by: The Web-Cam



# CLASSIFIEDS

## Building Lots For Sale!

Train Mountain member has 4 nice home / vacation building lots for sale.

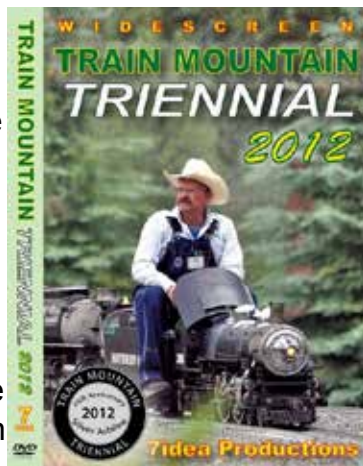
Prices reduced! Lots are located in an established subdivision just a few minutes from Train Mountain. Home owners association provides free water and well maintained all-weather roads. Lots range in size from .7 acre to .25 acre, all lots have phone and water to the lot, 1 has power to the lot, power close by the other 3 lots.

Cash or short term contract.

**Priced from \$7,000 to \$8,500 (below tax value).**

**Call owner at 360-673-2277 or 360-703-7063.**

The terrific video that Aaron Bentsen from 7Idea Productions shot at the 2012 Triennial is available through the main office at Train Mountain. Give them a call at 541-783-3030 and get your on the way to your place. It's \$30 for the video and \$3 shipping and handling lower 48, \$4 S&H for all others. A most enjoyable video shot by a true video artist and of course our favorite subject, Train Mountain!



Our good friend Jim over at Discover Live Steam has also placed ads for us on his terrific website, thanks Jim. [www.discoverlivesteam.com](http://www.discoverlivesteam.com)

Did you see the great article and front cover story from the January / February 2013 issue of Live Steam and Outdoor Railroading? It is a most complimentary article about the facility and the great gang of folks that hang around the place and put on terrific live steam train meets. Pretty cool! [www.livesteam.net/home](http://www.livesteam.net/home)



**Donations\$ Needed!**

### HAVE SOMETHING YOU WANT TO SELL?

Place an ad in the Gazette!

1/8 Page: \$25/month or \$250/year

1/4 Page: \$40/month or \$400/year

1/2 Page: \$70/month or \$700/year

Full Page: \$125/month or \$1250/year

Published by Train Mountain Railroad

P.O. Box 438

Chiloquin, OR 97624

Email: [info@tmrr.org](mailto:info@tmrr.org) Phone: 541-783-3030

Contributors: TMRR BOD, Friends, TMI

Photos: Tom Watson

