



The Mountain GAZETTE

© Copyright 2014, Train Mountain Railroad

An Official Publication of the Train Mountain Railroad - Issue: Vol. #3 Issue #14 - September 2014

The Big Build Meet



was a huge success, with approximately 4000 feet of new track being laid between Beauchamp Siding on Aspen Loop and Witcombe. Many thanks to all the volunteers that completed this project. Also thanks to Joel Grasmeyer for the pictures.





Dana Ward recently took over a restaurant in downtown Chiloquin. Her first good deed for Train Mountain was to make sandwiches for the Work Week workers and send them up to Central Station for the other Train Mountain Ladies to serve.
Thanks Dana!

Check out Dana's Potbelly Cafe located by the Post Office in Chiloquin
212 1st Avenue, Chiloquin, OREGON 97624 -- Phone: (541) 783-0988

During the Big Build Work Week, the kitchen volunteers provided, Lunch and some dinners for the volunteer workers. Many Thanks to the Train Mountain Ladies!!

EXTREME FIRE DANGER

Southern Oregon and Train Mountain are experiencing the worst fire danger conditions in recent history. Everyone planning on running a train at TM should be aware that state and federal laws combine to require every vehicle (this includes your train) to carry a 2.5 pound ABC Fire Extinguisher, one gallon of water, an Axe or Pulaski with a handle at least 26 inches in length and a head weight of not less than two pounds, a Shovel not less than 26 inches overall length and a blade not less than eight inches wide. Also, you cannot go off of the pavement on Train Mountain roads without this same equipment in your private vehicle. If you plan to drive your pickup, for example, to the Big Build job site you must carry the above equipment in that vehicle. The local forestry officials are enforcing these requirements, and the fines for non compliance are substantial.

Train Mountain is a NO SMOKING Facility

During recent events, many Members and their Guests have been ignoring this policy. There are only three designated smoking areas at Train Mountain:

- (1) Outside the front of the Backshop**
- (2) Outside the east door of the Hall of Flags**
- (3) Outside the Motor Pool (Maintenance Building)**

Due to the high fire danger at Train Mountain during the summer, we have zero tolerance for anyone smoking outside one of the designated areas.

There is NO SMOKING anywhere out on the track!

Members, Guests, and Visitors that continue to violate the Train Mountain Smoking Policy may be asked to leave.

Visitors to Train Mountain:

Train Mountain is very popular and is continually attracting visitors from throughout the world. We announce that our hours are from 10:00 AM until 3:00 PM Monday through Friday during the summer, and 10:00 AM to 2:00 PM during the winter. The office is closed on weekends except during meets, and then only when volunteers are available to open the office.

Our insurance advisors request that all people (members and visitors) complete and sign a liability release. If **YOU** as a member encounter visitors on the property without a visitors pass please direct them to the office so that we can insure that a release has been completed and a visitors pass has been issued.

If **YOU**, as a member, open the gate and allow visitors to pass through - **YOU** are responsible to see that the release has been completed. Releases are available in the mailboxes near the office for those times the office is closed. There are also releases available in the kitchen and in the back shop.

If you do not want to, or do not have the time to, ensure that the releases are completed - then please graciously explain that the train park is closed to visitors and that the open hours are normally 10:00 AM until 3:00 PM Monday through Friday. To arrange other hours visitors should call the office at 541-783-3030.

From The President -- Tom Watson

The Big Build was a huge success. Many pre-registered, but a large number registered upon arrival. The volunteers attempting to organize the meets and provide resources for the attendees continue to encourage preregistrations, or at the very least, send an email or phone the office letting us know you are coming.

The Train Mountain kitchen volunteers had a difficult time guessing at how much food to purchase to keep us all fed, and had to make extra trips to Klamath Falls to obtain more food as more and more meet participants arrived without letting us know they were coming.

Frank Bartholomew, the Aussies, Lee Breuer, Larry DaBroi, and others did an excellent job as docents showing off Train Mountain. These visitor and guest often become new Train Mountain members, so if you are running at Train Mountain and have an empty seat on your train, please offer rides to guests and visitors. We had great success with the new Yellow Badges, so remember that people wearing a Yellow TM Badge would really appreciate being given a train tour of Train Mountain.

Due to a lack of sufficient volunteer staff to man the office and ensure the safety and security of Train Mountain during non weekday business hours, the main gate will be closed after hours and on weekends unless there are sufficient volunteers available to supervise visitors.

Therefore, when you invite a guest to Train Mountain, you will be responsible for your guest(s) and must make sure your guest(s) sign a Participant Release. If your guest arrives when the gate is closed, you are responsible for letting your guest through the gate. If you allow another person to enter Train Mountain when the gate is closed, that is not a member, you are responsible to ensure that person goes directly to the office and completes a Participant Release and is supervised while on the property.

We would like to encourage visitors at TM, but there are times when we must tell them to return during regular hours. Please be respectful when dealing with visitors, and if you do not have time to show them around, take the time to explain there is no one here to show them around at the present time.

We are all in this together. We must all work together. We do not have paid staff to take care of our wants and needs. We are all volunteers. Everyone must pitch in and help.

The TM Video Contest closes in less than two months! The video on YouTube announcing the contest has had over 1,000 views. Now is the time to get to work on your video... 2 months to go.... The September meet and the Fall Colors meet are the last great opportunities to see lots of trains running. What can you do?



The September meet and the Fall Colors meet are the last great opportunities to see lots of trains running. What can you do?

Train Mountain now has it's own Google+ page. What is unique about this is that the Google+ page is directly linked to our place page. Thus, when someone does a "Google" search for TM, they will access information from the Google+ page.

We are currently waiting on Google to provide a way to merge the old TM YouTube page with the new Google+ page. There have been over 5,000 views of our first video posted on the TM YouTube page "Train Mountain Adventure 2013." There is a new video posted that highlights the Maricopa Live Steamers, and includes an interview with their president, Perry McCauley. We hope to have many more videos to share from our contest entries to expand our TM video library.

In closing, please let me know if you have any questions, concerns, or other feedback. FYI- the blog hasn't gone anywhere. As soon as someone can be found to make themselves available to write articles about Train Mountain, we will be able to move forward with that. I haven't documented the time, but if I were to guess, I spend an average of 4-5 hours a week working on the TM Social Media project. It is tough to say, because it is a constant thing. I might only do it for 5-30 minutes at a time, but several times each day adds up! Thanks for allowing me to be of service.

Chris Donhost

Lillyville -- by Seymour Skandals



How fast things change! Last month Old McDonald was under attack from cattle consortium, headed by Buford P. Brown. Mr. Brown's plans rapidly changed when GOLD was discovered near Lillyville, and Mr. Brown abruptly left town. Although the cattle chutes and stock yards remain in Lillyville,

no one knows the intentions of Mr. Brown. Old McDonald says he knew that Johnny-come-lately was no threat to his dairy and his dairy business is barely keeping up with the demand for milk by the new miners pouring into Lillyville.

Candice B. DePlace has opened a new restaurant which, like most new enterprises in Lillyville, is operating in a tent right next to the tent temporarily housing the Beer Thirty Saloon. The temperance ladies continue their outrage that the men still have a place to drink.

The Reverend Dale E. Bread has reminded us that construction of the new church should be completed by next Spring. Jim Eakin, proprietor of the Eakin Construction Company, has headed north for the winter (go figure) claiming he needs to locate virgin timber from the Pacific Northwest to construct the new church.

Following the recent discovery of gold, money now pours into the Lillyville economy. Many new buildings are expected to be constructed during the next construction season. This reporter was reminded that Lilly has only two Seasons - Winter and Construction Season.

News from Deadwood

The railroad did not provide either passenger or freight service to Deadwood for over a year due to the Hairpin track removal and reconstruction. The town suffered greatly and became rundown. Now that the railroad is again serving Deadwood, the economy has improved sufficiently for several citizens to make arrangements with the Kludt Construction Company to renovate several buildings. Kludt Construction spokesperson, Joyce, has announced that if sufficient carpenters are willing to travel to Deadwood during the next Construction Season, they may be able to renovate the entire town.

Youngstown Chronicle -- by Chad Terbocks

After all of the drama, Abigail Rainwater the new school teacher, recently displayed when refusing to move into one of the rooms above Daffodil Station because the owner also owns the Chateau DaBroi Winery, the latest rumor has her moving into the room in the rear of the saloon. The Youngstown School Board is now investigating.

The Youngstown Company Store reports their business is booming following their recent remodel.

The Kludt Construction Company are now booked through next year with remodel jobs around town. Nevertheless, the entire company has gone north for the winter (Go Figure!).



Sheriff Izzy Guilty, son of Judge Ulysses R. ("UR") Guilty, reports there has been no crime reported in Youngstown this month. As a result, the Town Council has threatened to close the jail to save money, but Sheriff Izzy has warned that closing the jail would be a bad idea. The Red Rose Saloon has been closed for remodeling all month, but has now reopened. A large group of local ladies noticed how quiet and peaceful the town became while the saloon was closed, and are organizing a temperance movement. Sheriff Izzy is now expecting trouble stating, "We're going to need that jail!"



Reggie and Ethyl Moregas report their newly remodeled gas station is doing a booming business from the numerous minors passing through on their way to the gold fields at Lillyville.

Alec Tricity, manager of Blackout Electric, reports the damage from last month's thunder storms has all been repaired.



A Message from Dana Ward

I would like to thank all the Train Mountain members and guests who have supported me in my new venture, The Potbelly Café. I am truly thankful and appreciative for all your support. My Mother and I enjoy serving you!!

Also, I would like to thank all those who donated money to the “Freezer Fund” for Train Mountain. It will help us greatly in preparing foods for our meals during work weeks and dinners prepared during meets throughout the year. The freezer has been ordered and will be arriving soon.

Thanks again, Dana.

Office Help Needed At Train Mountain

During the work weeks and meets we could sure use some help in the Main Office, especially in the mornings for check ins. Things get a little hectic and we are sometimes overwhelmed with requests and questions. If you have a little time and some people skills we could sure use your help.

Additionally the biggest thing that WE ALL CAN DO is to pre-register online or by phone if you are lacking computer skills. If you do this simple thing the office congestion and many delays will be minimized and Tom will stop mumbling in the office! So please pre-register.

This is also true even if you have purchased an ALL MEET PASS. Yes you are entitled to come to all the meets but it would sure be nice if we knew you were coming! Tom isn't the only one mumbling. You should hear the cooks complaining about not knowing how much food to buy. A simple phone call or email will do.

Once again thanks for your continued support of Train Mountain.

Please Supervise the Children you and your Guests Bring to Train Mountain

On August 12, 2014, it was discovered, “the fire water gon empty and derailed on the main by Appendix Siding. Looks like kids pushed it out and threw out the water bottles and shovels and coasted around till the trucks were jammed with pine cones.”

We don't know when this happened, only when it was discovered. There have been several other reported incidents of unsupervised children behaving irresponsibly.

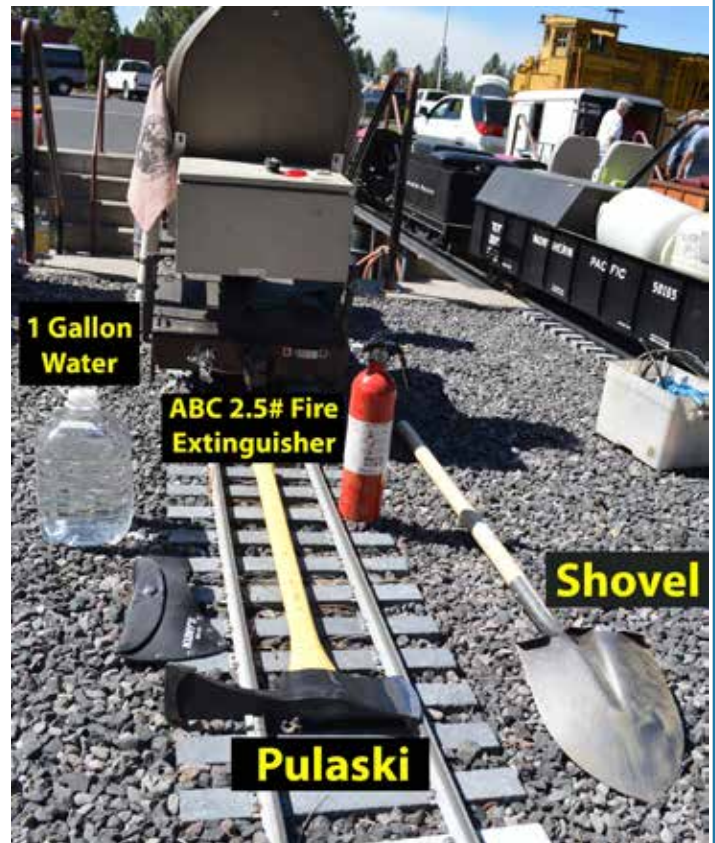
Please let us all strive to make sure all children are adequately supervised so that no one gets hurt. If you are not supervising your children, do not get upset if someone else does it for you.

If your children wish to ride the rail bikes, please make sure they have viewed and understand the Train Mountain Safety Video first.

Meeting Fire Tool Requirements - - by Jeff Mills

The ODF and USFS requires any vehicle that operates on an improved road during Level III Fire Danger to carry the following Fire Fighting Equipment; 1 Shovel with an 8" wide blade and a handle of at least 26", 1 double-bit axe or a Pulaski with a 2lb head and 26" handle, a 2.5 lb fire extinguisher and a one gallon of water. This sounds like a lot to carry on our trains however it can be done. My train consists of a two-seat riding/engineer car and locomotive. Despite being small, all of these required items are stowed safely and conveniently.

This was accomplished with a minimum of modification to my engineer car. I obtained a 3 ft. piece of 4" ABS drain pipe and plumbers tape. The 4" drain pipe was cut in half lengthwise and attached to the Deck of the engineer car with the plumbers tape. This half-pipe houses the handles of the Pulaski and shovel between the rider's feet. The Shovel and Pulaski are inserted from the rear of the car and are held in place with a bungee cord. The fire extinguisher is mounted under the engineer's seat with the provided bracket. A gallon jug of water fits tightly between my back seat and tool box.



The Pulaski was purchased from Harbor Freight and the shovel was purchased from my local hardware store. These tools are also available on Amazon many with free shipping. The shovel is what the US Forest Service refers to as a Lady Shovel. It has a shorter than standard handle. These are used by Smoke Jumpers and Tanker Crews as they are a compact size making storage and handling easier. This installation allows the conductor to comfortably place his/her feet astride the half- pipe preventing damage to the tool handles.

Please feel free to come and look at my riding/engineer car at the October Fall Colors meet or contact me via e-mail jhmills51@hotmail.com

Improving Train Mountain Fire Safety by Tom Watson

Train Mountain formed a Fire Safety Committee last year. There are presently only three members, Chairman Jeff Mills , Tom Watson, and Dave Savage. Anyone interested in helping on this committee please contact either Jeff or Tom.

Because this is such an important endeavor, this will be a regular column in the Gazette. This month I will attempt to outline some of our goals. This will be a multi-phase program. Phase one will be a program to protect the Train Mountain buildings.

The first work on Phase One began with the Order of the Arrow Boy Scout project on the weekend of August 16-17. The Order of the Arrow group did a community service project at Train Mountain helping us eliminating some of the ladder fuel below Central Station. We all thank the Scouts for helping us fulfill our goal of improving fire safety at Train Mountain.

In addition to the Phase One goal, we also must simultaneously do routine right-of-way maintenance that contains both maintenance goals and fire safety goals. Our most pressing need is to accomplish one such goal prior to winter. That goal is to remove all brush, pine needles, and other flammable material, and non flammable debris from the ditches. If we do not clean the ditches of all material, we risk having areas of track and/or ballast being washed out by rain or snow melt water this coming winter season. The images below are examples that may already be done, but



there are many areas still needing attention.

The two above images show brush blocking the drainage ditch. The two left images show examples of both ditch blockage and ladder fuel that can take a fire up the hill causing rapid spread.



The image on the bottom left contains both brush and small pine trees. They all need to be removed. This both blocks the drainage ditch and could potentially carry a fire to the caboose up the hill.



The two images on the left are both of the same area, one from each end. They show small pine trees and brush that block the drainage ditch and also block the view of approaching trains.

The image below is also the same area and shows how the pine needles get tangled in the undergrowth adding to the fire hazard.



The image on the left shows that when the brush is removed from an area there are more desirable species of plants to take over the chore of holding the bank in place and also look nice without being a significant fire risk.

This area, like many, illustrates the small pine starts attempting to retake the area. These small pine “weeds” should all be removed.

From a pure track and railroad right of way maintenance

standpoint, it would be desirable to remove all small pine tree saplings and brush twenty feet either side of the edge of the ballast. Then by also removing all brush within this same area, we would create an area which provides reasonable fire safety and is also much easier to maintain.

Looking at the image on the right, you will see an area that illustrates the principle described above. There is no brush. There are no small pine trees. Only adult pine trees and meadow grass. This area is quick to clean up in the Spring, but moreover, there is no ladder fuel to carry a fire up the slope and into the canopy of the trees. This area is just below Central Station.



Our goal for Phase One is to have all areas below Central Station looking like this area.

The Project of Highest Priority Under Phase One

is to make the Motor Pool fire safe. As shown in the image below, small pine trees and brush are growing right up to the edge of the building. Should a fire come through this area the Motor Pool would likely be destroyed. Yes, it is a metal building which will resist embers from a distant fire, and yes a metal building will fail under a close fire. The heat will cause



the metal sheeting to twist and fail. The paint will ignite, and the conducted and radiated heat will ignite flammable items on the inside.

To make this building reasonably fire safe, we must remove all brush and small pine trees from inside the circle of track surrounding the Motor Pool.

PHOTO GALLERY

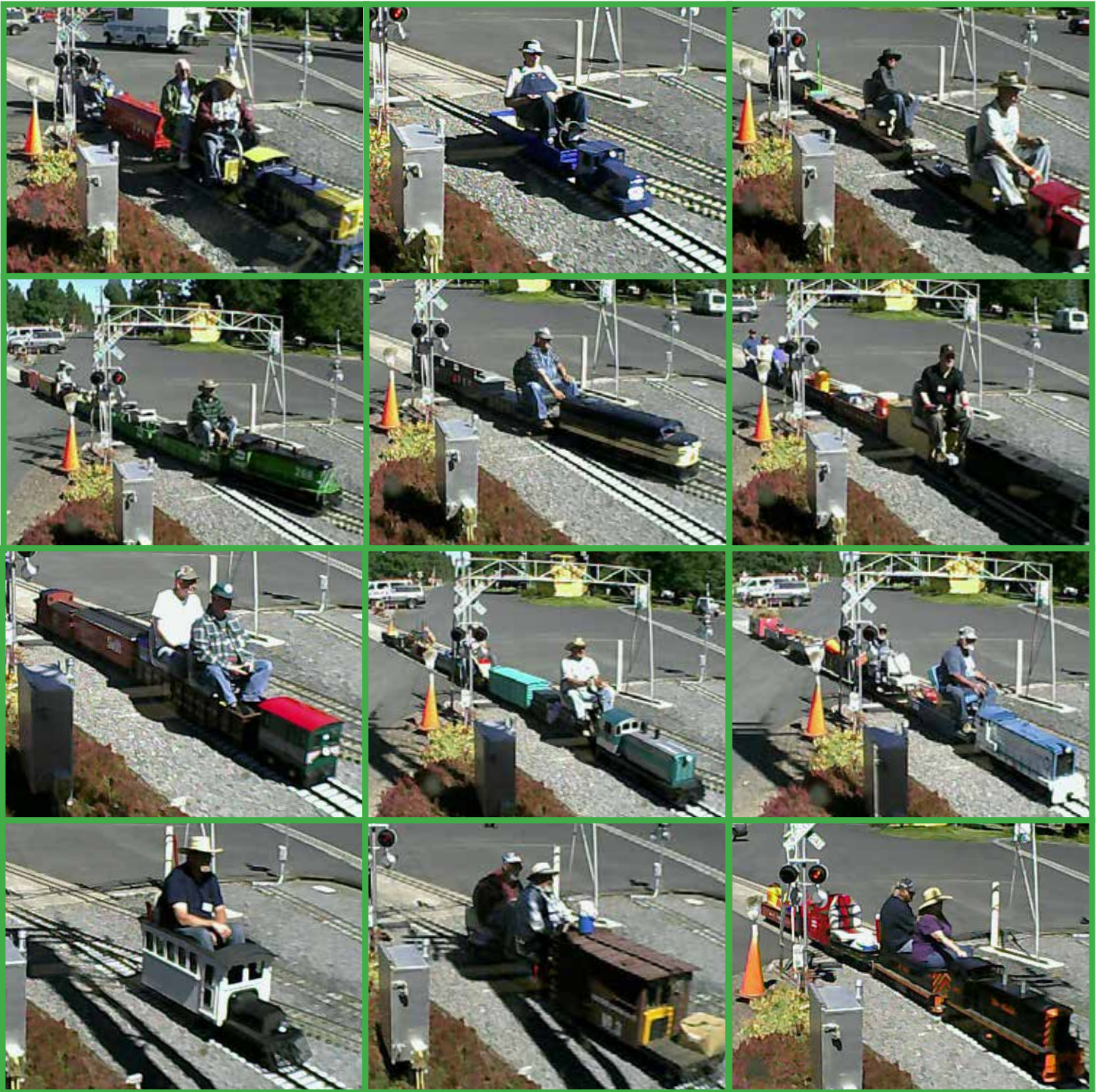
Photos by: Tom Watson, Dennis Ward, and Joel Grasmeyer





WEB-CAM GALLERY

Photos by: The Web-Cam



Register for the Fall Colors Meet now!!

Please Use the Online App to Register or Join-- <http://tmrrmembers.org>

WEB-CAM GALLERY

Photos by: The Web-Cam

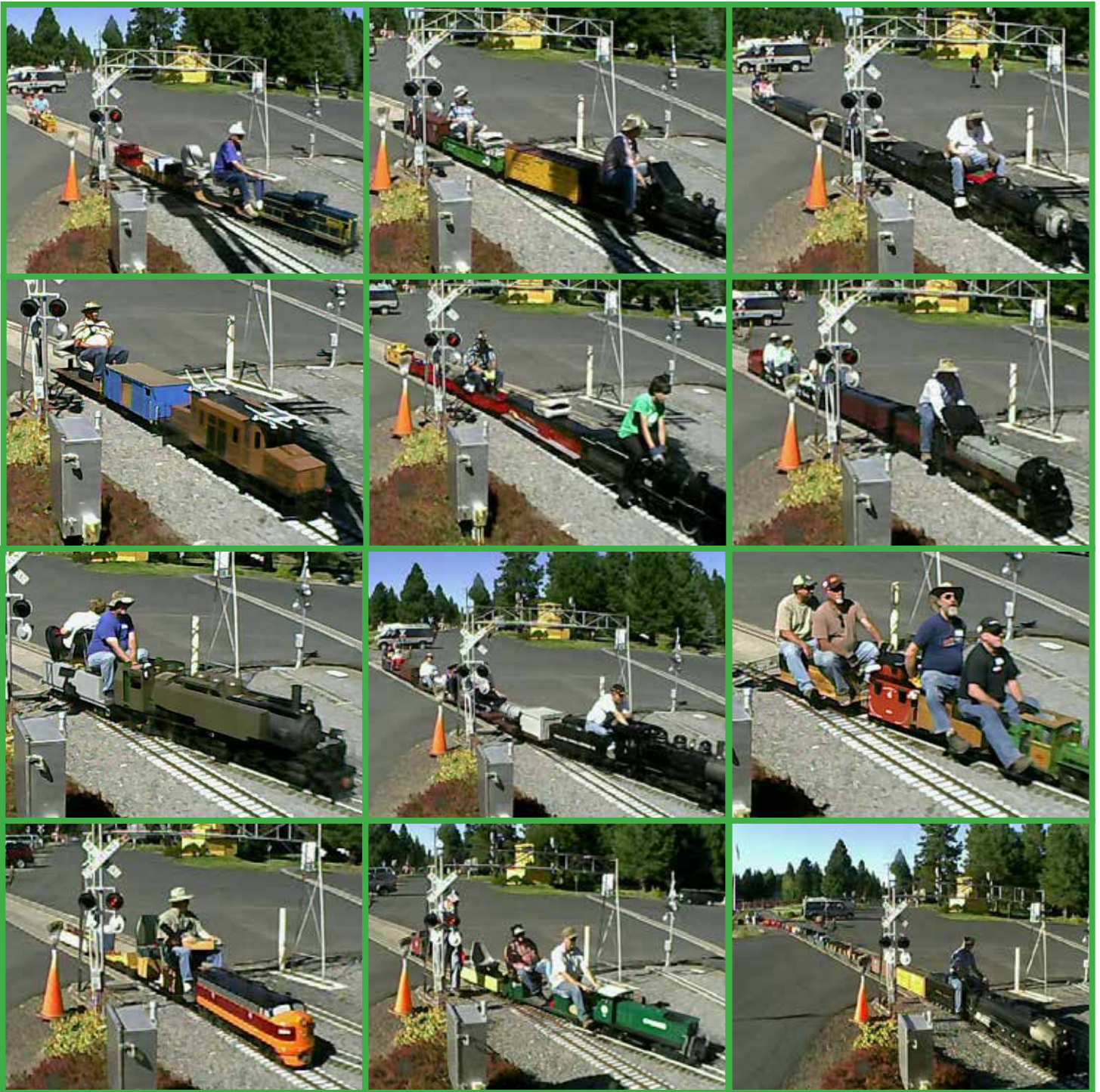


Register for the Fall Colors Meet now!!

Please Use the Online App to Register or Join-- <http://tmrrmembers.org>

WEB-CAM GALLERY

Photos by: The Web-Cam



Register for the Fall Colors Meet now!!

Please Use the Online App to Register or Join-- <http://tmrrmembers.org>

WEB-CAM GALLERY

Photos by: The Web-Cam



Register for the Fall Colors Meet now!!

Please Use the Online App to Register or Join-- <http://tmrrmembers.org>

CLASSIFIEDS

Building Lots For Sale!

Train Mountain member has 4 nice home / vacation building lots for sale.

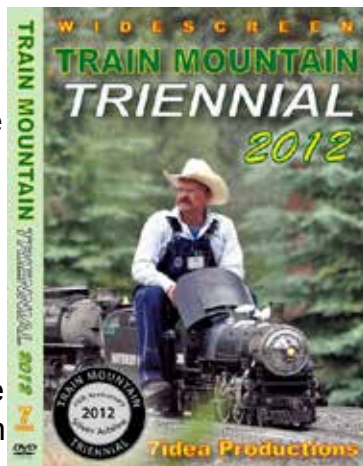
Prices reduced! Lots are located in an established subdivision just a few minutes from Train Mountain. Home owners association provides free water and well maintained all-weather roads. Lots range in size from .7 acre to .25 acre, all lots have phone and water to the lot, 1 has power to the lot, power close by the other 3 lots.

Cash or short term contract.

Priced from \$7,000 to \$8,500 (below tax value).

Call owner at 360-673-2277 or 360-703-7063.

The terrific video that Aaron Bentsen from 7Idea Productions shot at the 2012 Triennial is available through the main office at Train Mountain. Give them a call at 541-783-3030 and get your on the way to your place. It's \$30 for the video and \$3 shipping and handling lower 48, \$4 S&H for all others. A most enjoyable video shot by a true video artist and of course our favorite subject, Train Mountain!



Our good friend Jim over at Discover Live Steam has also placed ads for us on his terrific website, thanks Jim. www.discoverlivesteam.com

Did you see the great article and front cover story from the January / February 2013 issue of Live Steam and Outdoor Railroading? It is a most complimentary article about the facility and the great gang of folks that hang around the place and put on terrific live steam train meets. Pretty cool! www.livesteam.net/home



Donations\$ Needed!

HAVE SOMETHING YOU WANT TO SELL?

Place an ad in the Gazette!

1/8 Page: \$25/month or \$250/year

1/4 Page: \$40/month or \$400/year

1/2 Page: \$70/month or \$700/year

Full Page: \$125/month or \$1250/year

Published by Train Mountain Railroad

P.O. Box 438

Chiloquin, OR 97624

Email: info@tmrr.org Phone: 541-783-3030

Contributors: TMRR BOD, Friends, TMI

Photos: Tom Watson





Agency Lake Resort is up for sale!
A small peaceful resort with 4 cabins,
17 hook-ups, tenting, boat parking/
rental, & tremendous mountain &
lake views. The dock & launch offer
access to bird watchers, fishermen, bird
hunters, water skiers and swimmers. A 3
bedroom home for the hosts, 2 garages,
extra buildings, & development space on
the 3.64 Ac.



Train Mountain is only 5 miles away. What a retirement plan. Asking \$479,000. Call for info from Action Realty at 541-884-3367 or Sharon Breen at 541-891-2040. Seller will look at reasonable offers, possession negotiable

FOR SALE – Two 40 foot containers (track ready) delivered to Train Mountain and placed in Containerville. \$5500 each.

Call Bill Dobbs (610-772-4478)



Kla-Mo-Ya Casino

34333 Hwy 97 N
Chiloquin, OR 97624
541-783-7529 or 1-888-KLAMOYA
www.klamoyacasino.com

Kla-Mo-Ya Casino opened in 1997 and is owned and operated by the Klamath, Modoc and Yahooskin Tribes. Set in the beautiful pines of Southern Oregon, we are located on Highway 97 near the junction of Highway 62 (Crater Lake Highway).

We are open 24 hours a day, 365 days a year, and welcome travelers and groups from across the country year round.

Our Peak to Peak Restaurant is open 24 hours a day, with a full service lounge and beverage service available out on the gaming floor. Choose from great menu items like juicy steaks, classic salads and pastas, or try our beefy Triple 7 Burger if you are *really* hungry. Dine in or take out, we have a host of friendly staff to serve you. Check out our current menu from the Dining page of our website, and watch for monthly special features. The Peak to Peak restaurant welcomes groups, meetings or parties for special occasions.

Open from 7am to 9pm, the Espresso Bar serves a wide variety of espresso and coffee drinks, hot or cold, as well as fruit smoothies, frozen yogurt, desserts, and quick to-go lunches.

Our gaming floor has 344 slots with new games and themes being brought in all the time. Find out about our current slot promotions and check out recent jackpot winners on our website and Facebook page.

Try your hand at one of our four Blackjack tables. We offer double deck and six-deck blackjack with \$3 tables available every Monday. Keep up with promotions and tournaments available by checking our website.

Hours of operation:

Weds & Thurs: 12 noon – 8pm

Friday through Sunday: 12
Noon – 12 Midnight

(closing times may vary depending on play)

Stop by the Bonus Club to sign up for a free membership card to earn rewards and qualify for our many promotions and giveaways. While you are there, browse through the unique selection of items in our Gift Shop.

RVers, Truckers and large vehicles are always welcome, with plenty of free overnight parking available. Stop by the Bonus Club to ask about discounts and perks.

Come enjoy the warmth and excitement of Kla-Mo-Ya casino.



Crater Lake Junction Travel Center

34005 Hwy 97 N
Chiloquin, OR 97624
541-783-9800

The Crater Lake Junction Travel Center opened for business in 2010, and is owned by the Klamath, Modoc and Ya-hooskin Tribes. Open 24 hours a day and located just next door to Kla-Mo-Ya Casino as you enter, this travel center offers competitive fuel prices and many convenience items.

Travelers can fuel up with gas, diesel, or propane. Stop in for a snack or soda, or grab a quick meal featuring Mexi-Go or Mountain Fresh Pizza. Free Wi-Fi, a comfortable lounge with large screen TVs, laundry and shower facilities, and ATMs are all available.

Make sure to ask for a Crater Lake Junction Travel Center rewards membership card so that you can earn points for each purchase and visit. Your earned points can be applied toward future purchases.

Truckers, ask about trucker services and benefits for each visit. Convenience items and truck accessories are for sale, along with many useful daily provisions.

Crater Lake National Park

Crater Lake National Park is located off Highway 62, just 34 miles from Kla-Mo-Ya Casino and the Crater Lake Junction Travel Center. After playing and fueling up, discover the world-famous beauty and amazing history of Crater Lake. Groups and parties, ask about casino shuttle service for your outing or adventure.

Shuttle Service to and from Train Mountain

Kla-Mo-Ya Casino and the Crater Lake Junction Travel Center are also offering a free shuttle service for Train Mountain Members, Guests and Visitors.

Train Mountain people should see the TM Office for more details as we get this service implemented.