



It's Time to get Train Mountain Ready for the 2015 Running Season!

Making Train Mountain as fire safe as possible is a very high priority goal.

The ODF (Oregon Department of Forestry) crew has begun brush clearing at TM. To show the current project, which is making a fire break along South Chiloquin Road.

A YouTube video that shows what is happening is located at this link:
<http://youtu.be/L22bsQ4ldVA>

This is an important project that will help us make Train Mountain more fire safe. These guys are doing the really hard manual labor it takes to clear brush. It will then be up to us to maintain these areas and not let the brush reclaim the ground.

Having ODF come to Train Mountain was accomplished through a grant program that Justin Throne helped get rolling.



Above image from left to right:
Robert McGregor, Matt Anspach, Ian Garrett,
James Monteil, Cale Graves, Jared Judkins.





Railroad Park Zone

Last year Train Mountain presented a proposal to Klamath County requesting the establishment of a 'Railroad Park Zone'. Train Mountain is currently zoned as a private forest and falls under all of those types of restrictions. Over the top of the zoning we have a CUP (Conditional Use Permit) that John Black got approved in previous years. Well the long and the short of it is this, Klamath County loved the idea of the Railroad Park Zone and also the establishment of an area dedicated to 'resident' volunteers. However the State of Oregon did not like the resident part at all. As a consequence Train Mountain retracted their proposal for 2014. Now Train Mountain is once again forging ahead in this worthwhile endeavor for 2015. What has changed is the part referring to the 'resident' area, this has been removed from the current request.

So the request to all of you is to do the same as last year, let the county know how you feel about Train Mountain and its ongoing projects and that you feel this rezoning is in the best interests of Klamath County and of course Train Mountain. They received over 200 emails and letters from those in favor of such a Railroad Park Zone last year and we also had 'standing room only' attendance at last year's presentation meeting.

John Black has drafted a 'sample' letter to be emailed to Mr. Gallagher at Klamath County mgallagher@co.klamath.or.us. If you want to post a letter, his [mail address](#) is: Mark Gallagher | Interim Planning Director | Klamath County Planning Department | 305 Main Street, 1st Floor, Klamath Falls, OR 97601.

The next presentation to Klamath County will be held at 6:00pm Tuesday June 23rd. the Tuesday of Triennial Week. We need people to come to the hearing. Mark your calendars. The hearing is held in the Board of County Commissioner's hearing room on the 2nd floor at 6:00pm at 305 Main Street in Klamath Falls. Sometimes the front door gets locked, but the rear door is left unlocked.

Letters might say:

Dear Mark,

I am writing to ask Klamath County to approve the Train Mountain land use application amending the comprehensive plan, creating a Train Park zone, and re-zoning about 40 acres as a Train Park zoned support area for Train Mountain.

I support Train Mountain. It is special. It is the largest and longest model railroad in the world. It attracts people from all over the world. Now that Train Mountain is a non-profit, it is building a terrific program to teach everyone about railroading. More and more groups are using Train Mountain. For example, the scouts are holding their big Camporee at Train Mountain. This growing and successful project is great for the county. To continue being successful, Train Mountain needs land use approval to conduct its activities.

This is the second time this issue has been considered. In April of 2014 Klamath County approved this request and also approved a track connected residential community. The Oregon Dept of Land Conservation and Development (DLCD) did not like the residential development and blocked it. Train Mountain has had to withdraw last year's application and re-apply without the track connected residential community.

Please approve it again. Nothing has changed.

Sincerely,

[your name]

This rezoning is very important to the future of Train Mountain as it would give more control over the 40 acres or so that is the main infrastructure of Train Mountain. All of Train Mountain is now zoned Forestry. Many of Train Mountain's activities are allowed only as pre-existing non-conforming uses. If attempted to be built now, they would not be able to be approved in the forestry zone. They can exist as is, but they cannot be expanded. This stops Train Mountain from fixing up Blue Caboose Campground, moving the track shop, building a museum and other buildings, installing restrooms and showers, and many other needed improvements. Train Mountain needs to rezone the 40 acres around Central Station to operate and improve.

THIS IS IMPORTANT. Please take the time to write. It does not matter where you live or vote. Your letter and your presence at the hearing will really help.

We have some 800 plus member families that all get a copy of this newsletter. Imagine the impact if all of **US** sent in an email to Mr. Gallagher! Wow! Just as important would be to send in a Snail Mail letter if you don't wish to send an email! Address is listed above. So please take the time to do this very important step for the future of **YOUR** club! Thank you.

From the Triennial Safety Committee -- Chairman Dick Peterson

The Safety committee will conduct many presentations of the Safety video and 2015 updates during the Triennial. Chairman Dick Peterson (richardwpeterson@comcast.net) welcomes individuals who could volunteer for one or more of the roughly half-hour events... (which includes limited set up and cleanup time).

We also plan on holding sessions during the Spring and Narrow Gauge meets as all individuals are required to view the video once per year before operating. Those individuals will receive the 2015 Safety sticker on their Triennial credentials and will NOT have to attend a second Safety session.

Important Track Assignment Information

Critical Mass for Electric and Steam locomotive parking was reached on February 15, 2015! In order that all participants with steam locomotives have track assignments with access to water and air, only locomotives and tender/engineer's car will be parked at the turntable. Consists will be assigned to other areas. The same will apply to electric locomotives where track space near receptacles may need to be shared.

This means we will need to operate the same as full size railroads - Locomotives will be parked separate from consists. Complete trains will need to be assembled each day.

This does not apply to those that registered early and are assigned to Crisp Yard.

You Must BE a Current Train Mountain Member to bring Equipment

If you wish to bring equipment to the 2015 Triennial, you **must** complete and submit both pages of the Triennial Registration Form, and you **must** be a current 2015 Train Mountain Member or include a completed 2015 Membership Application Form with your Triennial Registration Form.

We cannot complete these Forms over the telephone, nor can we make promises over the phone without the paperwork. There are simply too many people coming to the Triennial to keep it all straight without paperwork.

You will not be given a Track Assignment until the paperwork, current Train Mountain Membership and both pages of the Triennial Registration Form, have been received at the Train Mountain Office.



REMEMBER: No job is complete without the paperwork!

We will continue to accept payment via Credit Card over the phone providing you have mailed the Forms to the Train Mountain Office. We will attempt to answer all questions if you contact the office via telephone or email.



Triennial Report

In the word of little Annie, **OH MY GOODNESS!** So here we sit with less than 50 days before the festivities start! The current body count is 881 registrations, 352 trains, 2.239 miles of 'stuff'! So I repeat, **OH MY GOODNESS!**

The Kitsap folks came down for their annual visit to get us going and once again came through in flying colors. Lots of those little agonizing jobs got done. We have a good handle now on what still needs to be done to be totally prepared for the onslaught in June.

If you are coming for the Spring Awakening or the Narrow Gauge meets rest assured we will have lots of work still on the agenda so please make it a point to attend the **8:30 MORNING volunteer meetings** so you can find what needs to be done. Don't come into the office at the crack of noon and ask what needs to be done, you're just likely to be told **what to do!**

We will hold an informal Triennial Meeting on Wednesday May 6th at 3:00pm during the Spring Awakening work week. This would be a good chance for Committee Chairs to get future committee members to sign up and for those same folks to find out what needs to be done during the Triennial. We will try and give an overview of how we think things will flow during the Tri work week and meet week. We will try and answer as many questions as we can at the meeting otherwise we will contact you later with an answer.

Some of the happenings so far are:

1. the Hall of Flags East wall project is finished
2. the new Fire signs are installed
3. the wooden track panels that were stored in Main Yard have been moved
4. the plastic tie material and the plastic under-layment and the steel rail for the completion of the Hairpin track project has arrived
5. track panels are being built as we speak for that project
6. two more ballast cars have been modified and are completed
7. a portion of the cracked parking lot at Crisp Yard has been repaired
8. the signal system is almost completed

9. Debra is back on staff and is working her magic
 - a. With the help of Kitsap, the one pond has been cleaned
10. Track cleanup has started
11. Forest Service has been doing an excellent job of cleaning up the perimeter of the Train Mountain property
12. New tables and chairs for the Hall of Flags
13. Weed abatement spraying has begun
14. The Web Cams are constantly being improved so those of you that cannot get to TM will still be able to see some of the fun you are missing





From the Train Mountain Library

“Did you know that Train Mountain Library, has a wonderful ongoing record of the plants and wildlife that can be seen in the area of the Fremont-Winema Forest in Klamath County? This was actually started by one of Quentin’s relatives. Her pictures and descriptions can be viewed in the library in the TM Scrapbook. We have added to this the results from the first ever plant train run at the 2012 triennial. (106 plants identified) We will continue to highlight plants and wildlife occasionally in the Gazette. This month we have seen crocus, early harvest tulips, chionodoxa, seaberries, willows, Mountain kitten tails and Japanese Coltsfoot, grape hyacinths, daffodils, starflowers and water hawthorn, johnny jump-ups, edible blue honeysuckle and Oregon White Oak. Our birds are the Canada goose, white front geese, swallows and sand hill crane.

Wanted: Computer and Blu-Ray and flat screen TV.”

Thanks to Russ Wood for the new Library Sign.



Calling All Vendors - Triennial Committee

All right live steam vendors how much do you folks spend on advertising and how many dedicated live steamers can you guarantee you reached? The 2015 Train Mountain International Triennial Meet will be the biggest in Train Mountain’s history. This is your opportunity to meet and greet your customer base face to face.

We will have ads in our Commemorative Program, you can give seminars, we have the Vendor Area to display your wares, and you can also come and play in the woods with the rest of us. You can’t get much better than that.

We have half of the Vendor area reserved so far, so don’t wait too long. So if you are interested in being a vendor at the 2015 Triennial, please contact Russ Wood, Triennial Vendor Chairman, send an email to russ@hobby-tronics.com subject: Triennial Vendor.

If you have a favorite vendor you do business with, ask them if they are coming to the Triennial, if they are interested in coming, please pass on the contact info and we will do the rest. Thanks.

New Signs at Train Mountain Railroad -- By Jeff Mills

Russ Wood has constructed 3 new Fire Danger rating signs. These signs have been placed in high traffic areas on the Train Mountain Property. The purpose of these signs is to remind everyone at Train Mountain what the fire danger potential for the day is. These signs



will be maintained with the same information that the USFS and ODF uses and will be similar to their signs seen along US Highway 97.

There are pie shaped colored areas on the sign with an arrow pointing to the current Fire Danger Level. The definitions of these levels are as follows;

Green/Low Fire Danger

Fuels do not ignite readily from small firebrands although a more intense heat source, such as lightning, may start fires in duff or punky wood. Fires in open cured grasslands may burn freely a few hours after rain, but woods fires spread slowly by creeping or smoldering, and burn in irregular fingers. There is little danger of spotting.

Blue/ Moderate Fire Danger

Fires can start from most accidental causes, but with the exception of lightning fires in some areas, the number of starts is generally low. Fires in open cured grasslands will burn briskly and spread rapidly on windy days. Timber fires spread slowly to moderately fast. The average fire is of moderate intensity, although heavy concentrations of fuel, especially draped fuel, may burn hot. Short distance spotting may occur, but is not persistent. Fires are not likely to become serious and control is relatively easy.

Yellow/High Fire Danger

All Fine Dead fuels ignite readily and fires start easily from most causes. Unattended brush and campfires are likely to escape. Fires spread rapidly and short distance spotting is common. High-intensity burning may develop on slopes with concentrations of fine fuels. Fires may become serious and their control difficult unless they are attacked successfully while small.

Orange/Very High Fire Danger

Fires start readily and spread very quickly. Crowning runs are common and fire spread through tree crowns for some distance (crown fire) is possible. Flames in the surface part of the fire can easily exceed 8 feet and may exceed 12 feet. Fires in dry grass and shrubs spread very quickly with flames over 20 feet likely. Torching and short crowning runs are possible in juniper, where it is present. Spotting is very common and occurs some distance from the main fire. Unattended campfires are very likely to escape and sparks are very likely to start fires in dry grass and needles.

Red/Extreme Fire Danger

Fires start quickly, spread furiously, and burn intensely. All Fires are potentially serious. Development into high intensity burning will usually be faster and occur from smaller fires. Direct attack is rarely possible and may be dangerous except immediately after ignition. Fires that develop headway in heavy slash or in conifer stands may be unmanageable while extreme burning conditions lasts. Under these conditions the only effective and safe control action is on the flanks until the weather changes or the fuel supply lessens.

Please pay attention to these signs and their meanings. Always be prepared for the unexpected; always be careful with any source of fire. Our best firefighting efforts will be in fire prevention first. Secondly early detection followed with immediate action.



I wish to thank Russ Wood for the construction of these signs and Mike Martin for the design, also Bob Brown for the installation during the KLS Work Week.



Train Mountain is a NO SMOKING Facility

During recent events, many Members and their Guests have been ignoring this policy. There are only three designated smoking areas at Train Mountain:

- (1) Outside the front of the Backshop**
- (2) Outside the east door of the Hall of Flags**
- (3) Outside the Motor Pool (Maintenance Building)**

Due to the high fire danger at Train Mountain during the summer, we have zero tolerance for anyone smoking outside one of the designated areas.

There is NO SMOKING anywhere out on the track!

Members, Guests, and Visitors that continue to violate the Train Mountain Smoking Policy may be asked to leave.

Lillyville -- by Seymour Skandals



The suppliers have 15 tents ready to delivery for the workers to start building Lillyville. They will be delivered and set up as soon as we get some better weather. Also coming are two – 8 foot windmills



to pump water to the town. A herd of beef is ready for delivery to the Lillyville Depot Stock Yards. 45 head of beef are coming to feed the hungry miners. Forty cords of firewood for the mining shacks and tents will soon be delivered.

We need to give a special thanks to companies support Lillyville:

Shane Miller Production Manager of CONTECH Engineering Solutions gave us, yes for free, a 5 foot 24 inch culvert to be used for the entrance to the Lillyville Mine.

The culvert is there at Lillyville but we are waiting for better weather to install it. We explained to Shane what we need and he had a worker bring out a 12 foot brand new plastic ask what we needed and than had the worker cut off 5 feet and load it into my truck. Thanks to Shane and the company in Hillsboro, Oregon.

A second thanks goes out to Michael Carlson, owner of Portland Badge in Tigard, Oregon. We had signs made up for all the tents and the mining shacks. We gave him the only the size of the signs and had him design them for an 1880's look. He did a great job which soon you all will see. He also gave us a great discount on these signs and the signs for the Lillyville Depot. Thanks you Mike for all your help.



Visitors to Train Mountain:

Train Mountain is very popular and is continually attracting visitors from throughout the world. We announce that our hours are from 10:00 AM until 3:00 PM Monday through Friday during the summer, and 10:00 AM to 2:00 PM during the winter. The office is closed on weekends except during meets, and then only when volunteers are available to open the office.

Our insurance advisors request that all people (members and visitors) complete and sign a liability release. If **YOU** as a member encounter visitors on the property without a visitors pass please direct them to the office so that we can insure that a release has been completed and a visitors pass has been issued.

If **YOU**, as a member, open the gate and allow visitors to pass through - **YOU** are responsible to see that the release has been completed. Releases are available in the mailboxes near the office for those times the office is closed. There are also releases available in the kitchen and in the back shop.

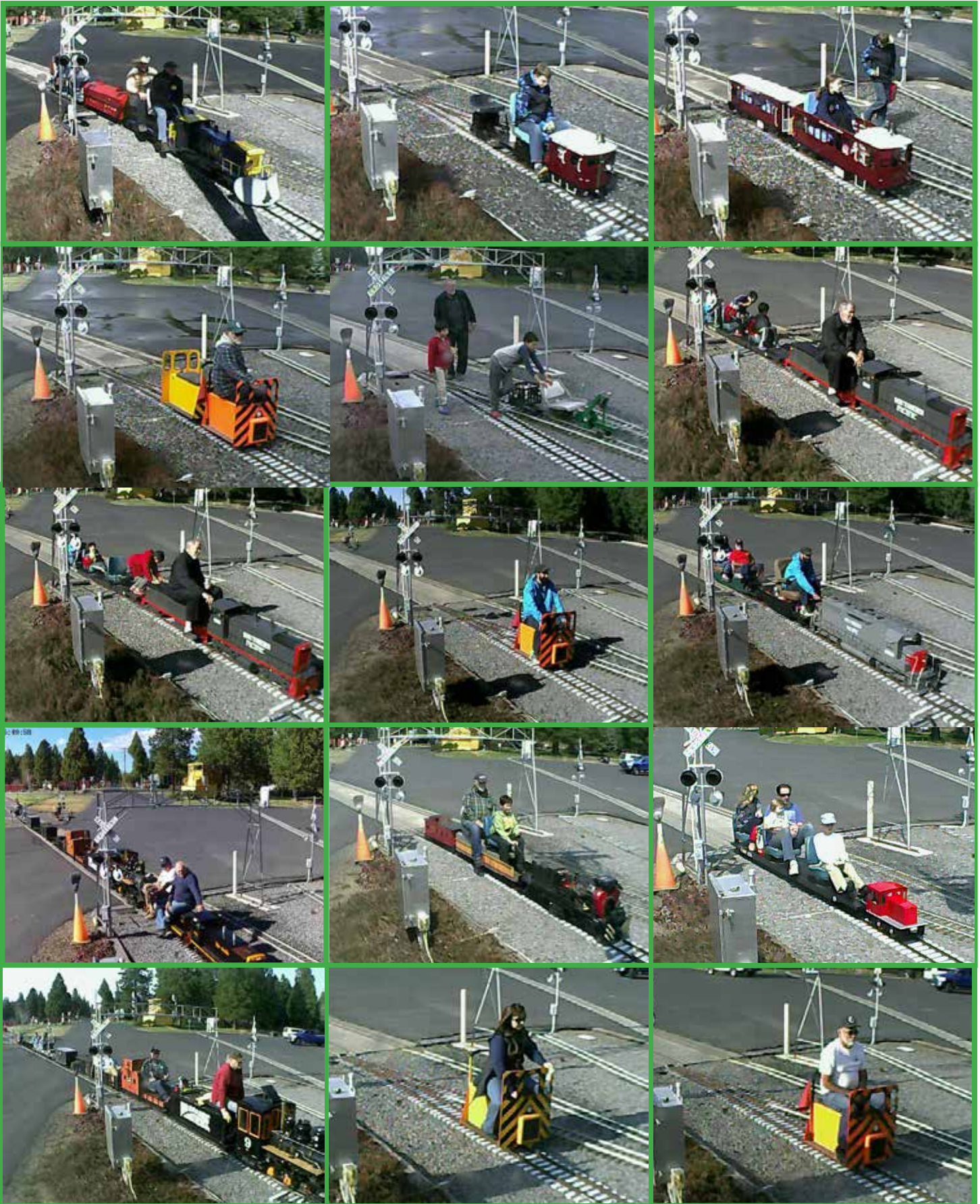
If you do not want to, or do not have the time to, ensure that the releases are completed - then please graciously explain that the train park is closed to visitors and that the open hours are normally (Winter) 10:00 AM until 2:00 PM Monday through Friday. To arrange other hours visitors should call the office at 541-783-3030.

WEB-CAM GALLERY

Photos by: The Web-Cam







Register for the Triennial Meet now!!

Please Use the Online App to Register or Join-- <http://tmrrmembers.org>

CLASSIFIEDS

Building Lots For Sale!

Train Mountain member has 4 nice home / vacation building lots for sale.

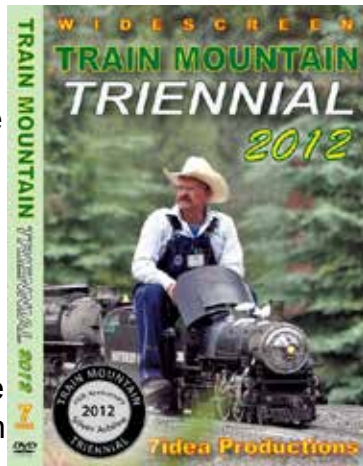
Prices reduced! Lots are located in an established subdivision just a few minutes from Train Mountain. Home owners association provides free water and well maintained all-weather roads. Lots range in size from .7 acre to .25 acre, all lots have phone and water to the lot, 1 has power to the lot, power close by the other 3 lots.

Cash or short term contract.

Priced from \$7,000 to \$8,500 (below tax value).

Call owner at 360-673-2277 or 360-703-7063.

The terrific video that Aaron Bentsen from 7Idea Productions shot at the 2012 Triennial is available through the main office at Train Mountain. Give them a call at 541-783-3030 and get your on the way to your place. It's \$30 for the video and \$3 shipping and handling lower 48, \$4 S&H for all others. A most enjoyable video shot by a true video artist and of course our favorite subject, Train Mountain!



Our good friend Jim over at Discover Live Steam has also placed ads for us on his terrific website, thanks Jim. www.discoverlivesteam.com

Did you see the great article and front cover story from the January / February 2013 issue of Live Steam and Outdoor Railroading? It is a most complimentary article about the facility and the great gang of folks that hang around the place and put on terrific live steam train meets. Pretty cool! www.livesteam.net/home



HAVE SOMETHING YOU WANT TO SELL?

Place an ad in the Gazette!

1/8 Page: \$25/month or \$250/year

1/4 Page: \$40/month or \$400/year

1/2 Page: \$70/month or \$700/year

Full Page: \$125/month or \$1250/year

Published by Train Mountain Railroad

P.O. Box 438

Chiloquin, OR 97624

Email: info@tmrr.org Phone: 541-783-3030

Contributors: TMRR BOD, Friends, TMI

Photos: Tom Watson



For Sale: \$125,000!

Cozy 550 sq. ft. cottage on beautiful wooded 10 acres with breath taking views of Agency Lake. Close to Train Mountain



Railroad and Crater Lake Park.

Contact
Crater Lake
Realtor,

Cindi Combs, 541.891.3580.

34211 Brittany Ct

Klamath Falls, Oregon

\$187,500



BEAUTIFUL HOME IN THE PINES

Beautiful home in the pines. Many updates through out the home. Hickory cabinets, ceramic tile floors, trex decking and fenced back yard. Small work shop. All the furniture is for sale also including the snow blower and 7 cords of wood. All full price offers include the 7 cords of wood, the new refrigerator, snow blower, washer & dryer and stand up freezer in garage. All other offers appliances and furniture negotiable.

Beds: 3 | Baths: 2

- Many Updates
- Hickory Cabinets
- 2 acres

www.cbkfalls.com/84940
MLS: 84940

Stacy Ellingson
Principal BROKER



541.591-4322
SEllingson@cbkfalls.com

Coldwell Banker Holman Premier Realty | 3815 South 6th Street, Suite 110 | Klamath Falls, OR 97603
Each office independently owned and operated. Equal housing opportunity. ©2014.

For Sale engine
Baldwin SW12
switcher V2 gasoline
engine built by Jack
Munson \$7500



also available 6 cars
separately priced 503-
812-5877

FOR SALE :

Uintah #50 and Water Car #023, 7½ gauge, 2½ scale, propane fired

PRICE: \$65,000

TRAILER ADDED: Additional \$3,000 (trailer specifically set up for engine and water car)

WILL BE ON DISPLAY AND RUNNING AT THE 2015 TRIENNIAL

For Information contact Kevin Shuler at 801-502-6647



Located only 1.5 miles off Hwy 97 in Downtown Chiloquin in the same building as the Post Office
212 1st Avenue, Chiloquin, OREGON 97624 -- Phone: (541) 783-2268





Kla-Mo-Ya Casino

34333 Hwy 97 N
Chiloquin, OR 97624
541-783-7529 or 1-888-KLAMOYA
www.klamoyacasino.com

Kla-Mo-Ya Casino opened in 1997 and is owned and operated by the Klamath, Modoc and Yahooskin Tribes. Set in the beautiful pines of Southern Oregon, we are located on Highway 97 near the junction of Highway 62 (Crater Lake Highway).

We are open 24 hours a day, 365 days a year, and welcome travelers and groups from across the country year round.

Our Peak to Peak Restaurant is open 24 hours a day, with a full service lounge and beverage service available out on the gaming floor. Choose from great menu items like juicy steaks, classic salads and pastas, or try our beefy Triple 7 Burger if you are *really* hungry. Dine in or take out, we have a host of friendly staff to serve you. Check out our current menu from the Dining page of our website, and watch for monthly special features. The Peak to Peak restaurant welcomes groups, meetings or parties for special occasions.

Open from 7am to 9pm, the Espresso Bar serves a wide variety of espresso and coffee drinks, hot or cold, as well as fruit smoothies, frozen yogurt, desserts, and quick to-go lunches.

Our gaming floor has 344 slots with new games and themes being brought in all the time. Find out about our current slot promotions and check out recent jackpot winners on our website and Facebook page.

Try your hand at one of our four Blackjack tables. We offer double deck and six-deck blackjack with \$3 tables available every Monday. Keep up with promotions and tournaments available by checking our website.

Hours of operation:

Weds & Thurs: 12 noon – 8pm

Friday through Sunday: 12
Noon – 12 Midnight

(closing times may vary depending on play)

Stop by the Bonus Club to sign up for a free membership card to earn rewards and qualify for our many promotions and giveaways. While you are there, browse through the unique selection of items in our Gift Shop.

RVers, Truckers and large vehicles are always welcome, with plenty of free overnight parking available. Stop by the Bonus Club to ask about discounts and perks.

Come enjoy the warmth and excitement of Kla-Mo-Ya casino.



Crater Lake Junction Travel Center

34005 Hwy 97 N
Chiloquin, OR 97624
541-783-9800

The Crater Lake Junction Travel Center opened for business in 2010, and is owned by the Klamath, Modoc and Ya-hooskin Tribes. Open 24 hours a day and located just next door to Kla-Mo-Ya Casino as you enter, this travel center offers competitive fuel prices and many convenience items.

Travelers can fuel up with gas, diesel, or propane. Stop in for a snack or soda, or grab a quick meal featuring Mexi-Go or Mountain Fresh Pizza. Free Wi-Fi, a comfortable lounge with large screen TVs, laundry and shower facilities, and ATMs are all available.

Make sure to ask for a Crater Lake Junction Travel Center rewards membership card so that you can earn points for each purchase and visit. Your earned points can be applied toward future purchases.

Truckers, ask about trucker services and benefits for each visit. Convenience items and truck accessories are for sale, along with many useful daily provisions.

Crater Lake National Park

Crater Lake National Park is located off Highway 62, just 34 miles from Kla-Mo-Ya Casino and the Crater Lake Junction Travel Center. After playing and fueling up, discover the world-famous beauty and amazing history of Crater Lake. Groups and parties, ask about casino shuttle service for your outing or adventure.

Shuttle Service to and from Train Mountain

Kla-Mo-Ya Casino and the Crater Lake Junction Travel Center are also offering a free shuttle service for Train Mountain Members, Guests and Visitors.

Train Mountain people should see the TM Office for more details as we get this service implemented.