



The Mountain GAZETTE

© Copyright 2015, Train Mountain Railroad

An Official Publication of the Train Mountain Railroad - Issue: Vol. #3 Issue #22 - May 2015



On May 15, 16, and 17, the Crater Lake Council held its regional jamboree at Train Mountain. The event, called a "Camporall," attracted 1265 registered Scouts and adult leaders according to the latest information. The image below depicts the crowd awaiting the Saturday night show.



Calvin Kai Ku the magician from San Francisco. You can check him out at www.calvinkaiku.com



The nearly three hour Saturday night show contained too many presentations to list here. The loud cheers for Train Mountain let everyone know how much fun was had by all participants on Saturday, and how much they appreciated the Train Mountain volunteers.





The following letter received via email is typical of the feedback from the Camporall event.

Dear Train Mountain Staff, Volunteers and Scoutrageous Committee Members who were involved in the recent Boy Scout Camporee (May 15-17):

Thank you for your generosity, time and enormous energies in making such a venue possible for the Boy Scouts of the region. It was simply a terrific success, thoroughly enjoyed by both the boys and adults in attendance.

I, like many of the others with the scouts, were amazed to even learn that such a place existed in our back yard. Then, when we had opportunity to actually experience it, found it most amazing. The time and energy and cost to build such a facility is just mind boggling. We all went away very impressed.

Train Mountain volunteers were everywhere and most gracious to us through out the weekend. My group was fortunate enough to catch a train ride with a gentleman from Seattle on his Steam locomotive and cars. To realize that individual owners committed their own equipment and cars to provide the rides was truly generous. Something Train Mtn. can take pride in.

One lovely lady worked all day most effectively, and with great patience and positiveness, managing the folks at the Train Bicycle Venue. As a parent who had two grand kids in the mix, I appreciated her efforts,

From the participant standpoint, in the rear view mirror, Train Mountain was an unforgettable memory for both the boys and scout leaders who attended. Thank you very much!

Respectfully,

Fred Clark
Scoutmaster Troop 113 Ashland, OR

Wow what a great Spring Awakening meet. A small but very active crowd got a great jump start on getting Train Mountain ready for the upcoming Triennial in June. We got a lot of the forest debris removed—still more on the ground (there always is). Many track and switch repairs were made—still more to do (there always is). There was a meeting of the Triennial committees where we discussed plans on how to manage the very large crowds of people who will be in attendance—still more to go over (there always is). Another committee meeting is scheduled for Wednesday, May 27th at 3:00 pm where we invite your input regarding any concerns you may have about our plans for running the event.

Scourageous brought more than 1200 scouts with the leaders and parents to Train Mountain over the weekend of May 15, 16 and 17. We ran trains all day Saturday and gave as many rides as possible to as many scouts and their families as were here. We had scouts riding railbikes around Midway circle and running the 1/8th scale version of the Allen switching puzzle. The scouts provided most of the own actives which includes BB gun and archery safety and use training. They created rope bridges. The National Guard was here to show off some of their equipment.

South Meadow was completely filled with tents and other shelters which housed the scouts Friday and Saturday nights. They all left by Sunday evening and left the grounds spotless. The only sign that they had been here was that the grass was matted down where they pitched their tents. Oh—and the Vendors barn is spotless. The members who helped were all still smiling at the end of the event. Thanks for coming Boy Scouts.

A fairly large number of you stayed after the Spring Awakening and after the Scourageous weekend. You are the reason Train Mountain continues to shine. Without the help of those like you and those who will be here for the Narrow Gauge meet Train Mountain could not continue to be a viable playground for railroad enthusiasts such as ourselves.

The Narrow Gauge is next—May 30 through June 2—with a work week preceding. It, the work week begins on Saturday May 23. This plus the work week which precedes the Triennial are our last opportunities to make our train park shine. We are expecting in excess of 1000 people, close to 350 trains, nearly two and a half miles worth. We could have an additional 1000+ people who will buy a day pass to see your trains and your railroad. We do not want anybody to be disappointed.

If you have not yet to signed up to attend the Triennial we still have room—unless you plan on bringing a train. There is no room left—close to Central Station—for trains. There are no more electrical outlets or steaming bays available. If you want to bring a train that does not require steaming bays or electrical outlets we can probably find a siding, quite a ways out, where you can have overnight parking for your train.

A reminder to all members and potential members. This is your railroad. It works best if you participate in the maintenance and planning of the facility. A lot is being done to bring the park up to the standards a world class venue such as Train Mountain should adhere to. Because this is your park you are the ones who will make this continue to be the mecca for our hobby.

Railroad Park Zone

Last year Train Mountain presented a proposal to Klamath County requesting the establishment of a 'Railroad Park Zone'. Train Mountain is currently zoned as a private forest and falls under all of those types of restrictions. Over the top of the zoning we have a CUP (Conditional Use Permit) that John Black got approved in previous years. Well the long and the short of it is this, Klamath County loved the idea of the Railroad Park Zone and also the establishment of an area dedicated to 'resident' volunteers. However the State of Oregon did not like the resident part at all. As a consequence Train Mountain retracted their proposal for 2014. Now Train Mountain is once again forging ahead in this worthwhile endeavor for 2015. What has changed is the part referring to the 'resident' area, this has been removed from the current request.

So the request to all of you is to do the same as last year, let the county know how you feel about Train Mountain and its ongoing projects and that you feel this rezoning is in the best interests of Klamath County and of course Train Mountain. They received over 200 emails and letters from those in favor of such a Railroad Park Zone last year and we also had 'standing room only' attendance at last year's presentation meeting.

John Black has drafted a 'sample' letter to be emailed to Mr. Gallagher at Klamath County mgallagher@co.klamath.or.us. If you want to post a letter, his [mail address](#) is: Mark Gallagher | Interim Planning Director | Klamath County Planning Department | 305 Main Street, 1st Floor, Klamath Falls, OR 97601.

The next presentation to Klamath County will be held at 6:00pm Tuesday June 23rd. the Tuesday of Triennial Week. We need people to come to the hearing. Mark your calendars. The hearing is held in the Board of County Commissioner's hearing room on the 2nd floor at 6:00pm at 305 Main Street in Klamath Falls. Sometimes the front door gets locked, but the rear door is left unlocked.

Letters might say:

Dear Mark,

I am writing to ask Klamath County to approve the Train Mountain land use application amending the comprehensive plan, creating a Train Park zone, and re-zoning about 40 acres as a Train Park zoned support area for Train Mountain.

I support Train Mountain. It is special. It is the largest and longest model railroad in the world. It attracts people from all over the world. Now that Train Mountain is a non-profit, it is building a terrific program to teach everyone about railroading. More and more groups are using Train Mountain. For example, the scouts are holding their big Camporee at Train Mountain. This growing and successful project is great for the county. To continue being successful, Train Mountain needs land use approval to conduct its activities.

This is the second time this issue has been considered. In April of 2014 Klamath County approved this request and also approved a track connected residential community. The Oregon Dept of Land Conservation and Development (DLCD) did not like the residential development and blocked it. Train Mountain has had to withdraw last year's application and re-apply without the track connected residential community.

Please approve it again. Nothing has changed.

Sincerely,

[your name]

This rezoning is very important to the future of Train Mountain as it would give more control over the 40 acres or so that is the main infrastructure of Train Mountain. All of Train Mountain is now zoned Forestry. Many of Train Mountain's activities are allowed only as pre-existing non-conforming uses. If attempted to be built now, they would not be able to be approved in the forestry zone. They can exist as is, but they cannot be expanded. This stops Train Mountain from fixing up Blue Caboose Campground, moving the track shop, building a museum and other buildings, installing restrooms and showers, and many other needed improvements. Train Mountain needs to rezone the 40 acres around Central Station to operate and improve.

THIS IS IMPORTANT. Please take the time to write. It does not matter where you live or vote. Your letter and your presence at the hearing will really help.

We have some 800 plus member families that all get a copy of this newsletter. Imagine the impact if all of **US** sent in an email to Mr. Gallagher! Wow! Just as important would be to send in a Snail Mail letter if you don't wish to send an email! Address is listed above. So please take the time to do this very important step for the future of **YOUR** club! Thank you.

From the Triennial Safety Committee -- Chairman Dick Peterson

The Safety committee will conduct many presentations of the Safety video and 2015 updates during the Triennial. Chairman Dick Peterson (richardwpeterson@comcast.net) welcomes individuals who could volunteer for one or more of the roughly half-hour events... (which includes limited set up and cleanup time).

We also plan on holding sessions during the Spring and Narrow Gauge meets as all individuals are required to view the video once per year before operating. Those individuals will receive the 2015 Safety sticker on their Triennial credentials and will NOT have to attend a second Safety session.

Important Track Assignment Information

Critical Mass for Electric and Steam locomotive parking was reached on February 15, 2015! In order that all participants with steam locomotives have track assignments with access to water and air, only locomotives and tender/engineer's car will be parked at the turntable. Consists will be assigned to other areas. The same will apply to electric locomotives where track space near receptacles may need to be shared.

This means we will need to operate the same as full size railroads - Locomotives will be parked separate from consists. Complete trains will need to be assembled each day.

This does not apply to those that registered early and are assigned to Crisp Yard.

Greetings from Joyce in the front office:

Triennial week is rapidly approaching and though I know it will be busy, I'm thinking that I probably don't really have a clue as to how busy it might get. Having a few volunteers in the office to help direct foot traffic, answer simple questions and hand participants forms throughout the Triennial would be a great help. The office will be open 9:00AM to 3:00PM, Monday through Saturday, Triennial week. If you would like to volunteer in the office during any of those days or hours, please e-mail joyce@tmrr.org or call 541-783-3030.

I'm looking forward to seeing you all here and having a great time in June!

Musings From Midway

Another spring has arrived and G-Ville I beginning to shape up in preparation for the triennial. Dennis has removed the long trestle, stabilized it's base and returned it to much firmer footing. The paths are all raked and the waterfalls and creek are cleaned out. Still lots to do cleaning track, putting out buildings, trimming bushes, etc..

Steve and Pam Panzik surprised us with a flagpole they had salvaged from the boneyard and painted white so it looks brand new. Richard fired up the back hoe and, with the help of the gathering crowd, set the flagpole in place. A cheer went up as we raised the flag and we have another new addition to G-Ville.

May Gazette Stuff

Volunteering at Train Mountain

Train Mountain has 2,200 acres of forest, with some 36 miles of track wandering through it. It is so much fun to come and go for a train ride here and enjoy what so many others have labored to bring to life. Of course we all know there is no such thing as a 'free lunch'! What we are asking each of you that are coming to the Triennial to do is volunteer two hours of your time. Two hours, I think that is pretty cheap price to pay for such an enjoyable experience. OK, how do you volunteer? Each morning at 8:00 (during the Triennial) in the Hall of Flags (Central Station) we will have a Volunteer Meeting. Attend this meeting and sign up for one of the many committees needing assistance. Some committees have long hours each day so need lots of helpers, committees like Security, Registration, Inspection Tent, Load/Unload, etc, all need lots of warm bodies to give them a hand. None of these are that hard to do but they do need to be done. Two hours of your time, 900 plus registrants, times two hours, is 1,800 man hours, or 257 volunteer hours per day to handle the tasks required. Some of our members of course will end up putting in many more hours than two, but the rest of us can spare two hours to assist them and ensure everyone attending has a great time.

Volunteering during the Work Weeks is the same type of situation as outlined above. We need you all to help us get ready for whatever event is going on. Most work weeks the meetings take place at 8:30, this where to find out what is going on and what needs to be done. Please don't come into the office at 10:00 and ask what needs to be done, the office does not know! The folks doing the work parties were there at 8:30 got their crews and are out doing the work. If you can't make the 8:30 meeting, grab a rake and rake, grab a broom and sweep, pick up trash, make sure the park looks as good as we can make it. Bottom-line if you really are here to help please make every effort to attend the volunteer meetings in the mornings. 8:30 most work weeks, 8:00 during the Triennial (much more to do then). Thank you all for making Train Mountain such a wonderful place to come and play!

Patience During the Triennial

Train Mountain has had big events in the past such as the IBLS Meet and Triennials in 2003, 2006, 2009, and 2012. We have NEVER had a meet this big though! We have over 900 registrants and they are bringing over 350 trains with them. In order to pull this event off we will ALL need a great deal of patience, please! Obviously most of us can't stay at Train Mountain so we will be staying off campus in Klamath Falls or elsewhere. That means each morning we will be coming back to Train Mountain and need to get into the park. PLEASE have patience with the Gate/Security people as they try to accommodate you (current arrivals, guests, etc) and get you to your designated parking place. Make sure your Parking Pass is CLEARLY displayed on your mirror so that THEY can see where you need to go. PLEASE don't argue with them that you just need to go someplace else for a just minute! We have heard that song before and it won't work. They have their orders, please have patience with them and follow the rules. Another area where we need some patience is the Inspection Tent. EVERY train going out on the main must come through here and just because you went through an hour or two ago means nothing to the CURRENT volunteer at the Inspection Tent. Patience. Some other areas require special skill sets and those folks with the skill sets would also

like to enjoy the Triennial. So in their case they may have restricted hours for certain services, e.g., Propane may only be available from 8 to 10 am and 2 to 4 pm. So please folks we all want to have a great time at this huge event all it is going to take is for all of us to have a little bit of patience.

Northern Ramble

As listed in the April edition of the Whistle, the British Columbia Society of Model Engineers newsletter.

After the Triennial:

June 27, 28	Pacific Northwest L.S.	Molalla, OR	
		John Nye:	35mm@usa.net
June 30	Kitsap L.S.	Port Orchard, WA	
		Erik Meehan	ka2tty@gmail.com
July 2	Vancouver Island M.E.	Saanich, Victoria B.C.	
		John Yardley	johnyardley@telus.net
July 2 to 5	The BCSME	Burnaby, B.C.	
		Joe Holman	jwholman@shaw.ca

Members traveling to these venues need to be aware that boiler certificates are required for steamers. You may email contact persons to say you are coming, telling them what, if any loco, you are bringing and how many in your party.

Please remember you need a passport, Nexus Card, or an enhanced drivers license and a birth certificate or naturalization certificate to enter Canada. To enter the USA you MUST have a passport or Nexus Card: a driver's license or birth certificate, by themselves, are INSUFFICIENT for entry.

Train Mountain Speed Limits

We are all concerned about making sure we all have a great time while here at Train Mountain. To that end we need to be aware of our speeds while moving about the park. If you are on a train the maximum speed limit is 7 miles per hour. The speed limit in a yard or congested area is 3 miles per hour. Almost the entire area around all of Central Station, Backshop, turntable, Containerville, etc is considered a 'yard limit', so 3 miles per hour is the max. Also the very popular Midway Garden Railway area can be very congested so please be on the lookout for folks wandering around looking at all the goodies and not paying any attention to where they are in regards to the running trains.

While traveling around the park in your motor vehicle under normal circumstances it would be 15 miles per hour. HOWEVER, the Triennial is not a NORMAL circumstance so here is what we would like, if you are in a congested area, around parked vehicles, trailers, whatever, please restrict your speed to 5 miles per hour. Also when driving around in the South Meadow area on the DIRT roads be aware of how much DUST you are raising and be considerate of your fellow members who are staying in that area. Patience and courtesy are the by words of this Triennial. Please have fun, be safe, and please let's look out for one another!

More to Klamath County than Train Mountain

Please take some time to enjoy the extra goodies our area has to offer such as Crater Lake, Collier Park, the fish hatchery, and Kla-Moy-Ya Casino. Lots to do when you are not riding on your train. Speaking of the Casino, they are putting on a couple of special events just for us! How about a \$500 FREE Slot Tournament on Wednesday June 17th, just show your Triennial Badge to enter, and remember it's just for us'ns! On Wednesday June 24th they having a FREE BlackJack Tournament just for us! Both of these events are at 5:00 in the evening and are available via their free shuttle service to their Casino.

Thank You J&S Golf Cart Rentals

The golf carts we will be using during the Triennial for our shuttle service have been graciously provided by J&S Golf Cart Rentals and Steve Lilly of Lillyville fame. If you would really like to show your appreciation for this very generous service please feel free to put some green in the donation can down at Lillyville. We and they would greatly appreciate it! Thanks J&S!

Train Mountain Triennial 2015 Campground Policy

- 1. Campground hosts** will be assigned as required. Hosts are in charge of their respective areas and will have access to management to resolve disputes not able to be resolved by the hosts. Camping will be permitted only in the designated areas. Host sites will be marked with a sign indicating they are the host by name.
- 2. Picnic Tables**, when available, have been placed in campground common areas, and shall **NOT** be removed from the common area except by Train Mountain Staff.
- 3. Six Acre Campground** is a primitive camp for tents, tent trailers and small trailers or campers.
- 4. South Meadow Campground** is a primitive campground used for overflow tent camping and for motorhomes, travel trailers, fifth wheels and full size campers. Only the Campground Host will have a water hookup. All others will draw water from the available spigots into portable containers.
- 5. Blue Caboose Campground** is designated for use by Triennial Committee Chairpersons who have motorhomes, travel trailers, fifth wheels and campers that are equipped for power and water hookups. Tents and tent trailers which are not equipped for hookups will use the Six-Acre or South Meadow Campground. Tents are allowed in Blue Caboose for visiting family as long as they are in the confines of the family's space. Cars, pickups and towing vehicles shall be parked in an area designated for such vehicles.
- 6. Reservations for the Blue Caboose Campground** will be taken only for Committee Chairpersons who intend to arrive no later than the first day of the workweek and intend to work on Train Mountain projects during the workweek. Reservation signs will have the Train Mountain ID and will be the only legitimate sign marking reserved spaces.
- 7. Blue Caboose Campground priority** will be given to Committee Chairpersons who will be here for the summer to work on Train Mountain, or persons in positions requiring their presence on the property. Chairpersons arriving to work on subsequent days of the workweek will be accommodated on a first-come, first-served basis.
- 8. Campsites must be occupied overnight**, with a maximum of 6 persons per campsite. Due to high demand for the campsites during Triennial event times, **you must be using your space or park your RV in another parking lot provided.**

9. **Water and electric service** are currently available at 15 sites in Blue Caboose. **There are eight sewer hookups available on a first come first served basis. There is no dumping of grey water or sewage on the ground** per Oregon State Law. If you require septic service or storage tanks, you may call Amber at Jefferson State Pumping, (541) 857-2923, and have your credit card ready as this will be a personal expense.
10. **The use of air conditioners is not permitted** since electric service is limited. During times of heavy occupancy, the use of electric items should be limited out of consideration to other campers.
11. **Do not drive or park on grass.** All cars or highway type transportation vehicles are to be parked in the parking lot designated on their parking pass. No mats larger than 2'x3' are allowed on the grass.
12. **Fires are not allowed.** BBQ grills and camping stoves are allowed in designated areas.
13. **Dispose of garbage and litter** in appropriate containers or take with you out of the campground. A tank is provided for kitchen wastewater in the camping areas as needed.
14. **Water faucets** are for drawing water only. No bathing, food washing, dish washing etc. at faucets.
15. **Nighttime quiet hours** are from 10 PM to 7 AM. This includes generators.
16. **During daylight hours** please be respectful of others and keep music and noise to a reasonable level.
17. **Do not** carve, cut, chop, nail to or otherwise damage living trees and vegetation.
18. **Well behaved Pets will be allowed** on Train Mountain property during the 2015 Triennial. **Pets must be on a leash at all times they are not inside your personal vehicle.** Pursuant to state and federal laws, only properly documented Service Dogs will be allowed inside buildings. **You MUST clean up after your pet.**

Please help us maintain the camping areas; your cooperation in obeying the few rules we have is what will make camping at Train Mountain a continued success.

NOTE: This 2015 Train Mountain Triennial Campground Policy shall only be in effect during the 2015 Triennial. At all other times the regular Train Mountain Campground Policy shall be in effect.

The Oregon State Police has asked that anyone having information concerning the tunnel fire on the Vertel property please contact:

Detective Brett Keller
Arson & Explosive Section
Oregon State Police
(541) 776-6236 or (c) (541) 727-1731
brett.keller@state.or.us

Train Mountain is a NO SMOKING Facility

During recent events, many Members and their Guests have been ignoring this policy. There are only three designated smoking areas at Train Mountain:

- (1) Outside the front of the Backshop
- (2) Outside the east door of the Hall of Flags
- (3) Outside the Motor Pool (Maintenance Building)

Due to the high fire danger at Train Mountain during the summer, we have zero tolerance for anyone smoking outside one of the designated areas.

There is NO SMOKING anywhere out on the track!

Members, Guests, and Visitors that continue to violate the Train Mountain Smoking Policy may be asked to leave.

Lillyville -- by Seymour Skandals



We need to give a special thanks to companies that support Lillyville:

Shane Miller Production Manager of CONTECH Engineering Solutions gave us, yes for free, a 5 foot 24 inch culvert to be used for the entrance to the Lillyville Mine.

The culvert is there at Lillyville but we are waiting for better weather to install it. We explained to Shane what we need and he had a worker bring out a 12 foot brand new plastic ask what we needed and than had the worker cut off 5 feet and load it into my truck. Thanks to Shane and the company in Hillsboro, Oregon.

A second thanks goes out to Michael Carlson, owner of Portland Badge in Tigard, Oregon. We had signs made up for all the tents and the mining shacks. We gave him the only the size of the signs and had him design them for an 1880's look. He did a great job which you all will see soon. He also gave us a great discount on these signs

and the signs for the Lillyville Depot. Thank you Mike for all your help.



Visitors to Train Mountain:

Train Mountain is very popular and is continually attracting visitors from throughout the world. We announce that our hours are from 10:00 AM until 3:00 PM Monday through Friday during the summer, and 10:00 AM to 2:00 PM during the winter. The office is closed on weekends except during meets, and then only when volunteers are available to open the office.

Our insurance advisors request that all people (members and visitors) complete and sign a liability release. If **YOU** as a member encounter visitors on the property without a visitors pass please direct them to the office so that we can insure that a release has been completed and a visitors pass has been issued.

If **YOU**, as a member, open the gate and allow visitors to pass through - **YOU** are responsible to see that the release has been completed. Releases are available in the mailboxes near the office for those times the office is closed. There are also releases available in the kitchen and in the back shop.

If you do not want to, or do not have the time to, ensure that the releases are completed - then please graciously explain that the train park is closed to visitors and that the open hours are normally (Winter) 10:00 AM until 2:00 PM Monday through Friday. To arrange other hours visitors should call the office at 541-783-3030.

IN MEMORY OF *Robert Harold Oct. 6, 1930 - Apr. 14, 2015*



Robert "Bobby" Lee Harold was born in Santa Monica, California on October 6, 1930. He passed away on Carson City, Nevada on April 14, 2015. He was a great outdoorsman. He enjoyed trains, motorcycles, boats, planes, and traveling in his motorhome.

Survivors include his children, Sue Furst (Frank), Bobbie Brassard (Thomas) and Brenda Boothroyd (Martin), seven grandchildren and four great grandchildren.

He was buried with his wife Maylene at the Woodlawn Cemetery, in Santa Monica, California.

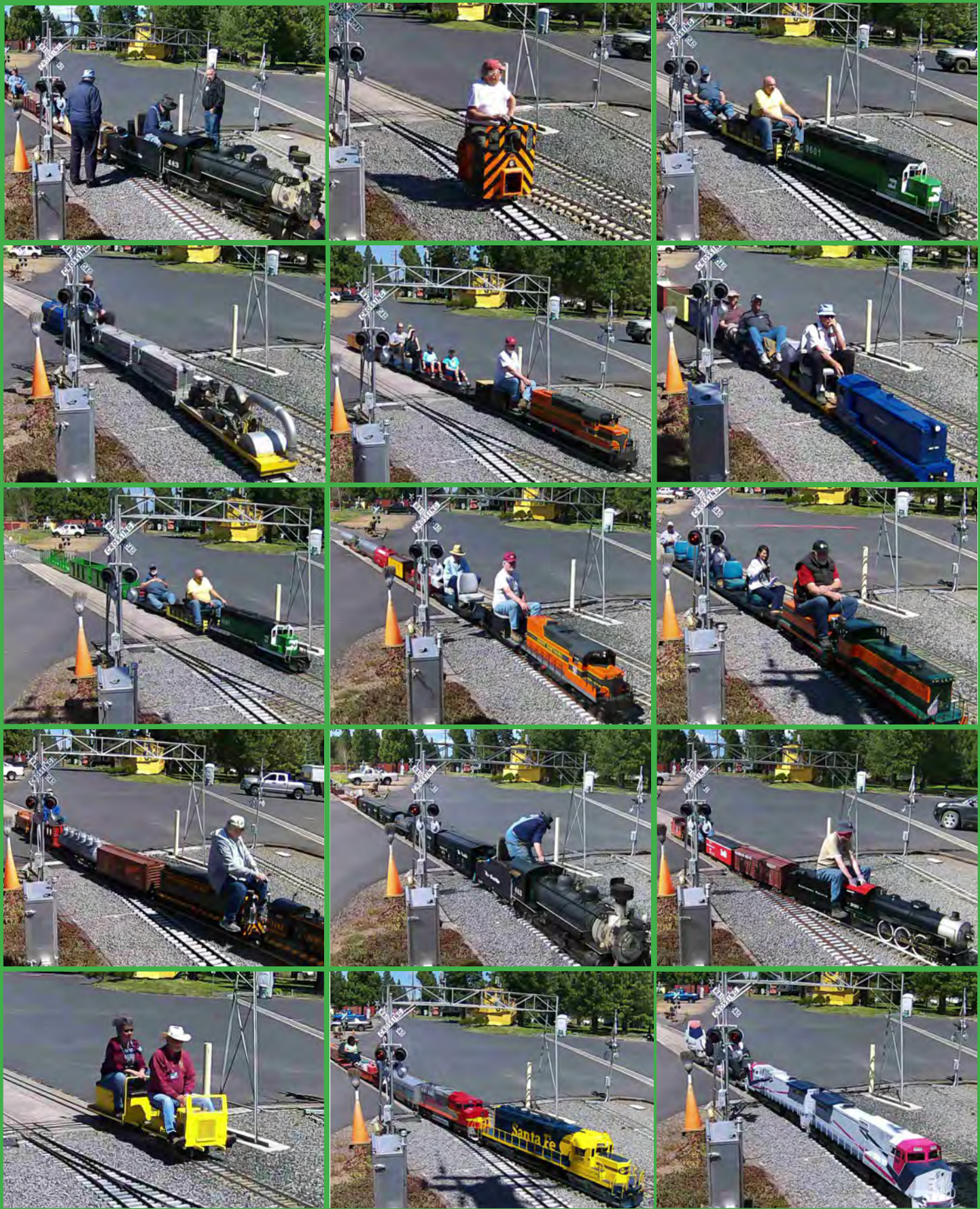
WEB-CAM GALLERY

Photos by: The Web-Cam



Register for the Triennial Meet now!!

Please Use the Online App to Register or Join-- <http://tmrrmembers.org>





Register for the Triennial Meet now!!

Please Use the Online App to Register or Join-- <http://tmrrmembers.org>

CLASSIFIEDS

Building Lots For Sale!

Train Mountain member has 4 nice home / vacation building lots for sale.

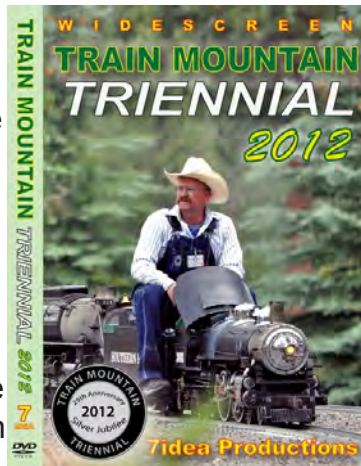
Prices reduced! Lots are located in an established subdivision just a few minutes from Train Mountain. Home owners association provides free water and well maintained all-weather roads. Lots range in size from .7 acre to .25 acre, all lots have phone and water to the lot, 1 has power to the lot, power close by the other 3 lots.

Cash or short term contract.

Priced from \$7,000 to \$8,500 (below tax value).

Call owner at 360-673-2277 or 360-703-7063.

The terrific video that Aaron Bentsen from 7Idea Productions shot at the 2012 Triennial is available through the main office at Train Mountain. Give them a call at 541-783-3030 and get your on the way to your place. It's \$30 for the video and \$3 shipping and handling lower 48, \$4 S&H for all others. A most enjoyable video shot by a true video artist and of course our favorite subject, Train Mountain!



Our good friend Jim over at Discover Live Steam has also placed ads for us on his terrific website, thanks Jim. www.discoverlivesteam.com

Did you see the great article and front cover story from the January / February 2013 issue of Live Steam and Outdoor Railroading? It is a most complimentary article about the facility and the great gang of folks that hang around the place and put on terrific live steam train meets. Pretty cool! www.livesteam.net/home



HAVE SOMETHING YOU WANT TO SELL?

Place an ad in the Gazette!

1/8 Page: \$25/month or \$250/year

1/4 Page: \$40/month or \$400/year

1/2 Page: \$70/month or \$700/year

Full Page: \$125/month or \$1250/year

Published by Train Mountain Railroad

P.O. Box 438

Chiloquin, OR 97624

Email: info@tmrr.org Phone: 541-783-3030

Contributors: TMRR BOD, Friends, TMI

Photos: Tom Watson



For Sale: \$125,000!

Cozy 550 sq. ft. cottage on beautiful wooded 10 acres with breath taking views of Agency Lake. Close to Train Mountain



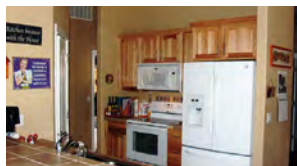
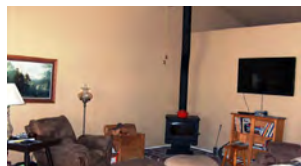
Railroad and Crater Lake Park.

Contact
Crater Lake
Realtor,

Cindi Combs, 541.891.3580.

34211 Brittany Ct
Klamath Falls, Oregon

\$187,500



BEAUTIFUL HOME IN THE PINES

Stacy Ellingson
Principal BROKER



541.591-4322
SEllingson@cbkfalls.com

Beautiful home in the pines. Many updates through out the home. Hickory cabinets, ceramic tile floors, trex decking and fenced back yard. Small work shop. All the furniture is for sale also including the snow blower and 7 cords of wood. All full price offers include the 7 cords of wood, the new refrigerator, snow blower, washer & dryer and stand up freezer in garage. All other offers appliances and furniture negotiable.

Beds: 3 | Baths: 2

- Many Updates
- Hickory Cabinets
- 2 acres

www.cbkfalls.com/84940
MLS: 84940

Coldwell Banker Holman Premier Realty | 3815 South 6th Street, Suite 110 | Klamath Falls, OR 97603
Each office independently owned and operated. Equal housing opportunity. ©2014.

For Sale engine
Baldwin SW12
switcher V2 gasoline
engine built by Jack
Munson \$7500



also available 6 cars
separately priced 503-
812-5877

FOR SALE :

Uintah #50 and Water Car #023, 7½ gauge, 2½ scale, propane fired

PRICE: \$65,000

TRAILER ADDED: Additional \$3,000 (trailer specifically set up for engine and water car)

WILL BE ON DISPLAY AND RUNNING AT THE 2015 TRIENNIAL

For Information contact Kevin Shuler at 801-502-6647



Located only 1.5 miles off Hwy 97 in Downtown Chiloquin in the same building as the Post Office
212 1st Avenue, Chiloquin, OREGON 97624 -- Phone: (541) 783-0988





100 Acres For Sale near Train Mountain

A train guy's dream! Build your home and shop on this 100 acre property. Lots of trees, beautiful meadows, aspen groves, wildlife, and room for miles of your own track on mostly flat ground. Approximately 800 feet of frontage on South Chiloquin Road within five minutes from Train Mountain. Could be subdivided. (\$400,000 - OBO)

Call Lew at (541) 783-3434 for more information.

Quentin Breen's Amtrak, gifted to Sharon, unfortunately must be sold. Vanguard engine with new battery, hand-held controls & six matching gondola cars for \$18,000. Cars are great for your lunches, misc. tools, fire equipment or pets. Cab-excellent shape, cars-can use touch-up paint.

Contact: sharonbreen87@gmail.com





Kla-Mo-Ya Casino

34333 Hwy 97 N
Chiloquin, OR 97624
541-783-7529 or 1-888-KLAMOYA
www.klamoyacasino.com

Kla-Mo-Ya Casino opened in 1997 and is owned and operated by the Klamath, Modoc and Yahooskin Tribes. Set in the beautiful pines of Southern Oregon, we are located on Highway 97 near the junction of Highway 62 (Crater Lake Highway).

We are open 24 hours a day, 365 days a year, and welcome travelers and groups from across the country year round.

Our Peak to Peak Restaurant is open 24 hours a day, with a full service lounge and beverage service available out on the gaming floor. Choose from great menu items like juicy steaks, classic salads and pastas, or try our beefy Triple 7 Burger if you are *really* hungry. Dine in or take out, we have a host of friendly staff to serve you. Check out our current menu from the Dining page of our website, and watch for monthly special features. The Peak to Peak restaurant welcomes groups, meetings or parties for special occasions.

Open from 7am to 9pm, the Espresso Bar serves a wide variety of espresso and coffee drinks, hot or cold, as well as fruit smoothies, frozen yogurt, desserts, and quick to-go lunches.

Our gaming floor has 344 slots with new games and themes being brought in all the time. Find out about our current slot promotions and check out recent jackpot winners on our website and Facebook page.

Try your hand at one of our four Blackjack tables. We offer double deck and six-deck blackjack with \$3 tables available every Monday. Keep up with promotions and tournaments available by checking our website.

Hours of operation:

Weds & Thurs: 12 noon – 8pm

Friday through Sunday: 12
Noon – 12 Midnight

(closing times may vary depending on play)

Stop by the Bonus Club to sign up for a free membership card to earn rewards and qualify for our many promotions and giveaways. While you are there, browse through the unique selection of items in our Gift Shop.

RVers, Truckers and large vehicles are always welcome, with plenty of free overnight parking available. Stop by the Bonus Club to ask about discounts and perks.

Come enjoy the warmth and excitement of Kla-Mo-Ya casino.



Crater Lake Junction Travel Center

34005 Hwy 97 N
Chiloquin, OR 97624
541-783-9800

The Crater Lake Junction Travel Center opened for business in 2010, and is owned by the Klamath, Modoc and Ya-hooskin Tribes. Open 24 hours a day and located just next door to Kla-Mo-Ya Casino as you enter, this travel center offers competitive fuel prices and many convenience items.

Travelers can fuel up with gas, diesel, or propane. Stop in for a snack or soda, or grab a quick meal featuring Mexi-Go or Mountain Fresh Pizza. Free Wi-Fi, a comfortable lounge with large screen TVs, laundry and shower facilities, and ATMs are all available.

Make sure to ask for a Crater Lake Junction Travel Center rewards membership card so that you can earn points for each purchase and visit. Your earned points can be applied toward future purchases.

Truckers, ask about trucker services and benefits for each visit. Convenience items and truck accessories are for sale, along with many useful daily provisions.

Crater Lake National Park

Crater Lake National Park is located off Highway 62, just 34 miles from Kla-Mo-Ya Casino and the Crater Lake Junction Travel Center. After playing and fueling up, discover the world-famous beauty and amazing history of Crater Lake. Groups and parties, ask about casino shuttle service for your outing or adventure.

Shuttle Service to and from Train Mountain

Kla-Mo-Ya Casino and the Crater Lake Junction Travel Center are also offering a free shuttle service for Train Mountain Members, Guests and Visitors.

Train Mountain people should see the TM Office for more details as we get this service implemented.