



The Mountain GAZETTE

© Copyright 2015, Train Mountain Railroad

An Official Publication of the Train Mountain Railroad - Issue: Vol. #3 Issue #23 - June 2015

Narrow Gauge Meet



A good time was had by all at the Narrow Gauge Meet. However, no one has submitted an article on the meet, and those few of us doing the paperwork to prepare for the Triennial simply have not had the time to prepare an article on the meet.

Remember, this is your club and newsletter. We need help getting the news out.

With the Triennial upon us, we are repeating several Triennial related articles. Yes, it would be desirable to have more Triennial articles, but we local volunteers at TM simply do not have time to write articles and also organize and prepare for the Triennial.

We keep hearing, "They ought to do!" Well, there is no "THEY," there is only US. It takes all of US to bring Train Mountain to its full potential. US includes all Members and Visitors who enjoy using Train Mountain. We are all VOLUNTEERS, and the more of US that volunteer to get things done - the better Train Mountain will become.

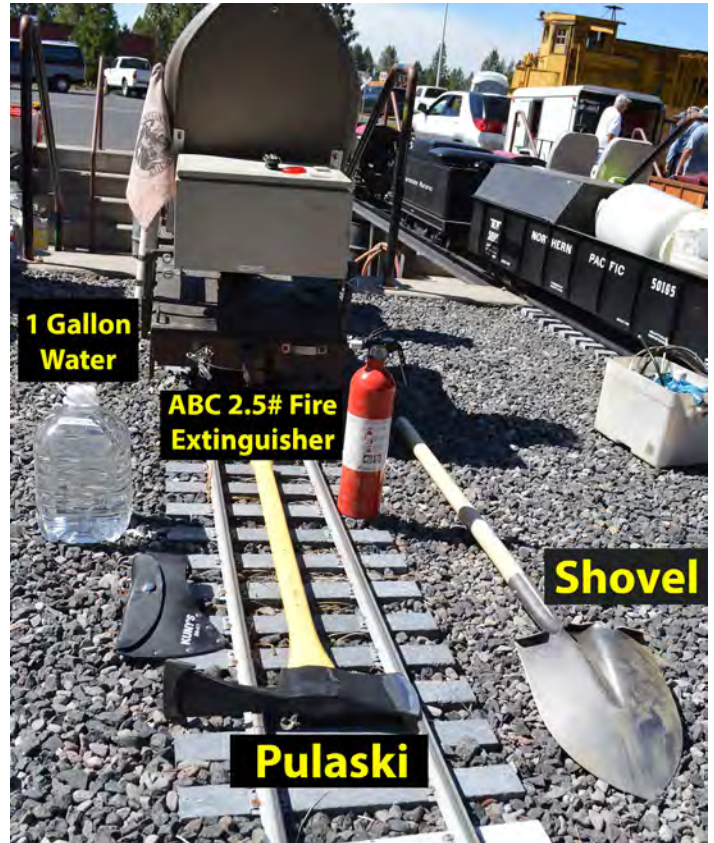
I want to thank all of the volunteers presently at TM, and those that are volunteering from home, all of whom are getting things done. Their efforts will make the 2015 Triennial largest and best ever!

REPRINT

Meeting Fire Tool Requirements - - by Jeff Mills

The ODF and USFS requires any vehicle that operates on an improved road during Level III Fire Danger to carry the following Fire Fighting Equipment; 1 Shovel with an 8" wide blade and a handle of at least 26", 1 double-bit axe or a Pulaski with a 2lb head and 26" handle, a 2.5 lb fire extinguisher and one gallon of water. This sounds like a lot to carry on our trains however it can be done. My train consists of a two-seat riding/engineer car and locomotive. Despite being small, all of these required items are stowed safely and conveniently.

This was accomplished with a minimum of modification to my engineer car. I obtained a 3 ft. piece of 4" ABS drain pipe and plumbers tape. The 4" drain pipe was cut in half lengthwise and attached to the Deck of the engineer car with the plumbers tape. This half-pipe houses the handles of the Pulaski and shovel between the rider's feet. The Shovel and Pulaski are inserted from the rear of the car and are held in place with a bungee cord. The fire extinguisher is mounted under the engineer's seat with the provided bracket. A gallon jug of water fits tightly between my back seat and tool box.



The Pulaski was purchased from Harbor Freight and the shovel was purchased from my local hardware store. These tools are also available on Amazon many with free shipping. The shovel is what the US Forest Service refers to as a Lady Shovel. It has a shorter than standard handle. These are used by Smoke Jumpers and Tanker Crews as they are a compact size making storage and handling easier. This installation allows the conductor to comfortably place his/her feet astride the half-pipe preventing damage to the tool handles.

Please feel free to come and look at my riding/engineer car at the October Fall Colors meet or contact me via e-mail jhmills51@hotmail.com

Operations Meet

July 31 – August 2

We now have both the Serpentine and Deadwood routes open, so you will have twice the fun. Passenger trains will run on all the hours: Rio Grande Zephyr goes down the Deadwood route and back up the Serpentine while the Southern Belle runs opposite. Midway Meteor serves Chiloquin but then heads up to Elizabeth, Helena, Douglas, and back to Central. The Northwoods Limited is just that – from Central Station, to Crane and Panzick, back to Aspen Grove on the new track there. Or, if you prefer freight, you have your choice of all the cars you can carry.

We will need to wait to see what exciting new dispatching Apps John Cooper puts together for us.

Come for the work week and help us set out the cars. There will be plenty of projects to keep us all busy.

Upcoming 2015 TM Ops Meet -- Jim Armstrong

I know that everyone's mind is currently focused on the Triennial but I wanted to remind you that the annual Train Mountain Operations Work Week and Meet isn't that far off.

We will be running both passenger and freight trains again this year with some new sidings, new depots, and routes. John Lovely is putting the finishing touches on the Passenger Train Schedules and John Cooper is tuning up his electronic dispatch board.

To make things easier on those members who allow their personal rolling stock to be used during the meet, a new tag system (similar to Maricopa's) is being implemented to indicate the owner of the car and which main yard track number to spot the car on at the end of the meet.

If you have any rolling stock that you would like to be included in this year's meet and it has not been used in a prior year's Ops Meet, please send me an email (armstrong.jandg@gmail.com) with the following details regarding each car you would like included:

1. Road Name
2. Car ID Markings
3. Type of car
4. Does the car have a "load" in it?

I'm also hoping that those of you that allowed your cars to be used in prior meets will be willing to let us use them again this year.

As a side note, I am looking for any members interested in learning the Freight side of the Ops meet; including Car Sorting, Initial Car Set-out, and operation of the Switch List computer system. Please let me know your interest (armstrong.jandg@gmail.com or 208/484-0073) and I make sure that you will be trained in each phase of the meet.

Thanks for your support and we'll see you the last week of July.

Railroad Park Zone

Last year Train Mountain presented a proposal to Klamath County requesting the establishment of a 'Railroad Park Zone'. Train Mountain is currently zoned as a private forest and falls under all of those types of restrictions. Over the top of the zoning we have a CUP (Conditional Use Permit) that John Black got approved in previous years. Well the long and the short of it is this, Klamath County loved the idea of the Railroad Park Zone and also the establishment of an area dedicated to 'resident' volunteers. However the State of Oregon did not like the resident part at all. As a consequence Train Mountain retracted their proposal for 2014. Now Train Mountain is once again forging ahead in this worthwhile endeavor for 2015. What has changed is the part referring to the 'resident' area, this has been removed from the current request.

So the request to all of you is to do the same as last year, let the county know how you feel about Train Mountain and its ongoing projects and that you feel this rezoning is in the best interests of Klamath County and of course Train Mountain. They received over 200 emails and letters from those in favor of such a Railroad Park Zone last year and we also had 'standing room only' attendance at last year's presentation meeting.

John Black has drafted a 'sample' letter to be emailed to Mr. Gallagher at Klamath County mgallagher@co.klamath.or.us. If you want to post a letter, his [mail address](#) is: Mark Gallagher | Interim Planning Director | Klamath County Planning Department | 305 Main Street, 1st Floor, Klamath Falls, OR 97601.

The next presentation to Klamath County will be held at 6:00pm Tuesday June 23rd. the Tuesday of Triennial Week. We need people to come to the hearing. Mark your calendars. The hearing is held in the Board of County Commissioner's hearing room on the 2nd floor at 6:00pm at 305 Main Street in Klamath Falls. Sometimes the front door gets locked, but the rear door is left unlocked.

Letters might say:

Dear Mark,

I am writing to ask Klamath County to approve the Train Mountain land use application amending the comprehensive plan, creating a Train Park zone, and re-zoning about 40 acres as a Train Park zoned support area for Train Mountain.

I support Train Mountain. It is special. It is the largest and longest model railroad in the world. It attracts people from all over the world. Now that Train Mountain is a non-profit, it is building a terrific program to teach everyone about railroading. More and more groups are using Train Mountain. For example, the scouts are holding their big Camporee at Train Mountain. This growing and successful project is great for the county. To continue being successful, Train Mountain needs land use approval to conduct its activities.

This is the second time this issue has been considered. In April of 2014 Klamath County approved this request and also approved a track connected residential community. The Oregon Dept of Land Conservation and Development (DLCD) did not like the residential development and blocked it. Train Mountain has had to withdraw last year's application and re-apply without the track connected residential community.

Please approve it again. Nothing has changed.

Sincerely,

[your name]

This rezoning is very important to the future of Train Mountain as it would give more control over the 40 acres or so that is the main infrastructure of Train Mountain. All of Train Mountain is now zoned Forestry. Many of Train Mountain's activities are allowed only as pre-existing non-conforming uses. If attempted to be built now, they would not be able to be approved in the forestry zone. They can exist as is, but they cannot be expanded. This stops Train Mountain from fixing up Blue Caboose Campground, moving the track shop, building a museum and other buildings, installing restrooms and showers, and many other needed improvements. Train Mountain needs to rezone the 40 acres around Central Station to operate and improve.

THIS IS IMPORTANT. Please take the time to write. It does not matter where you live or vote. Your letter and your presence at the hearing will really help.

We have some 800 plus member families that all get a copy of this newsletter. Imagine the impact if all of **US** sent in an email to Mr. Gallagher! Wow! Just as important would be to send in a Snail Mail letter if you don't wish to send an email! Address is listed above. So please take the time to do this very important step for the future of **YOUR** club! Thank you.

From the Triennial Safety Committee

Chairman Dick Peterson

The Safety committee will conduct many presentations of the Safety video and 2015 updates during the Triennial. Chairman Dick Peterson (richardwpeterson@comcast.net) welcomes individuals who could volunteer for one or more of the roughly half-hour events...(which includes limited set up and cleanup time).

Important Track Assignment Information

Critical Mass for Electric and Steam locomotive parking was reached on February 15, 2015! In order that all participants with steam locomotives have track assignments with access to water and air, only locomotives and tender/engineer's car will be parked at the turntable. Consists will be assigned to other areas. The same will apply to electric locomotives where track space near receptacles may need to be shared.

This means we will need to operate the same as full size railroads - Locomotives will be parked separate from consists. Complete trains will need to be assembled each day.

This may not apply to those that registered early and were assigned to Crisp Yard, but nothing is for sure and all Triennial Registrants must check in at the registration booth to receive or verify their track assignment.

Greetings from Joyce in the front office:

Triennial week is rapidly approaching and though I know it will be busy, I'm thinking that I probably don't really have a clue as to how busy it might get. Having a few volunteers in the office to help direct foot traffic, answer simple questions and hand participants forms throughout the Triennial would be a great help. The office will be open 9:00AM to 3:00PM, Monday through Saturday, Triennial week. If you would like to volunteer in the office during any of those days or hours, please e-mail joyce@tmrr.org or call 541-783-3030.

I'm looking forward to seeing you all here and having a great time in June!

Train Mountain Triennial 2015 Campground Policy

- 1. Campground hosts** will be assigned as required. Hosts are in charge of their respective areas and will have access to management to resolve disputes not able to be resolved by the hosts. Camping will be permitted only in the designated areas. Host sites will be marked with a sign indicating they are the host by name.
- 2. Picnic Tables**, when available, have been placed in campground common areas, and shall **NOT** be removed from the common area except by Train Mountain Staff.
- 3. Six Acre Campground** is a primitive camp for tents, tent trailers and small trailers or campers.
- 4. South Meadow Campground** is a primitive campground used for overflow tent camping and for motorhomes, travel trailers, fifth wheels and full size campers. Only the Campground Host will have a water hookup. All others will draw water from the available spigots into portable containers.
- 5. Blue Caboose Campground** is designated for use by Triennial Committee Chairpersons who have motorhomes, travel trailers, fifth wheels and campers that are equipped for power and water hookups. Tents and tent trailers which are not equipped for hookups will use the Six-Acre or South Meadow Campground. Tents are allowed in Blue Caboose for visiting family as long as they are in the confines of the family's space. Cars, pickups and towing vehicles shall be parked in an area designated for such vehicles.
- 6. Reservations for the Blue Caboose Campground** will be taken only for Committee Chairpersons who intend to arrive no later than the first day of the workweek and intend to work on Train Mountain projects during the workweek. Reservation signs will have the Train Mountain ID and will be the only legitimate sign marking reserved spaces.
- 7. Blue Caboose Campground priority** will be given to Committee Chairpersons who will be here for the summer to work on Train Mountain, or persons in positions requiring their presence on the property. Chairpersons arriving to work on subsequent days of the workweek will be accommodated on a first-come, first-served basis.
- 8. Campsites must be occupied overnight**, with a maximum of 6 persons per campsite. Due to high demand for the campsites during Triennial event times, **you must be using your space or park your RV in another parking lot provided.**

9. **Water and electric service** are currently available at 15 sites in Blue Caboose. **There are eight sewer hookups available on a first come first served basis. There is no dumping of grey water or sewage on the ground** per Oregon State Law. If you require septic service or storage tanks, you may call Amber at Jefferson State Pumping, (541) 857-2923, and have your credit card ready as this will be a personal expense.
10. **The use of air conditioners is not permitted** since electric service is limited. During times of heavy occupancy, the use of electric items should be limited out of consideration to other campers.
11. **Do not drive or park on grass.** All cars or highway type transportation vehicles are to be parked in the parking lot designated on their parking pass. No mats larger than 2'x3' are allowed on the grass.
12. **Fires are not allowed.** BBQ grills and camping stoves are allowed in designated areas.
13. **Dispose of garbage and litter** in appropriate containers or take with you out of the campground. A tank is provided for kitchen wastewater in the camping areas as needed.
14. **Water faucets** are for drawing water only. No bathing, food washing, dish washing etc. at faucets.
15. **Nighttime quiet hours** are from 10 PM to 7 AM. This includes generators.
16. **During daylight hours** please be respectful of others and keep music and noise to a reasonable level.
17. **Do not** carve, cut, chop, nail to or otherwise damage living trees and vegetation.
18. **Well behaved Pets will be allowed** on Train Mountain property during the 2015 Triennial. **Pets must be on a leash at all times they are not inside your personal vehicle.** Pursuant to state and federal laws, only properly documented Service Dogs will be allowed inside buildings. **You MUST clean up after your pet.**

Please help us maintain the camping areas; your cooperation in obeying the few rules we have is what will make camping at Train Mountain a continued success.

NOTE: This 2015 Train Mountain Triennial Campground Policy shall only be in effect during the 2015 Triennial. At all other times the regular Train Mountain Campground Policy shall be in effect.

Train Mountain is a NO SMOKING Facility

During recent events, many Members and their Guests have been ignoring this policy. There are only three designated smoking areas at Train Mountain:

- (1) Outside the front of the Backshop**
- (2) Outside the east door of the Hall of Flags**
- (3) Outside the Motor Pool (Maintenance Building)**

Due to the high fire danger at Train Mountain during the summer, we have zero tolerance for anyone smoking outside one of the designated areas.

There is NO SMOKING anywhere out on the track!

Members, Guests, and Visitors that continue to violate the Train Mountain Smoking Policy may be asked to leave.

Fire Season has begun. The fire danger is presently “MODERATE.”

Everyone please be careful. Train Mountain presently has several “Fire Gondolas” available for Members to place in their trains. Please see Jeff Mills or the Office for more information. These Gons are equipped with tools to aid in stopping a fire while it is small.

Every train consist that contains one of the Gons becomes a roving “fire watch,” which is a very important fire prevention tool. Having twenty, or so, of these roving fire watch trains may be very influential in not having Train Mountain operations shut down during high fire danger situations.

I would like to encourage as many as possible to participate by becoming a roving fire watch train.

Lillyville -- by Seymour Skandals



We need to give a special thanks to companies that support Lillyville:

Shane Miller Production Manager of CONTECH Engineering Solutions gave us, yes for free, a 5 foot 24 inch culvert to be used for the entrance to the Lillyville Mine.

The culvert is there at Lillyville but we are waiting for better weather to install it. We explained to Shane what we need and he had a worker bring out a 12 foot brand new plastic ask what we needed and than had the worker cut off 5 feet and load it into my truck. Thanks to Shane and the company in Hillsboro, Oregon.

A second thanks goes out to Michael Carlson, owner of Portland Badge in Tigard, Oregon. We had signs made up for all the tents and the mining shacks. We gave him the only the size of the signs and had him design them for an 1880's look. He did a great job which you all will see soon. He also gave us a great discount on these signs

and the signs for the Lillyville Depot. Thank you Mike for all your help.



Visitors to Train Mountain:

Train Mountain is very popular and is continually attracting visitors from throughout the world. We announce that our hours are from 10:00 AM until 3:00 PM Monday through Friday during the summer, and 10:00 AM to 2:00 PM during the winter. The office is closed on weekends except during meets, and then only when volunteers are available to open the office.

Our insurance advisors request that all people (members and visitors) complete and sign a liability release. If **YOU** as a member encounter visitors on the property without a visitors pass please direct them to the office so that we can insure that a release has been completed and a visitors pass has been issued.

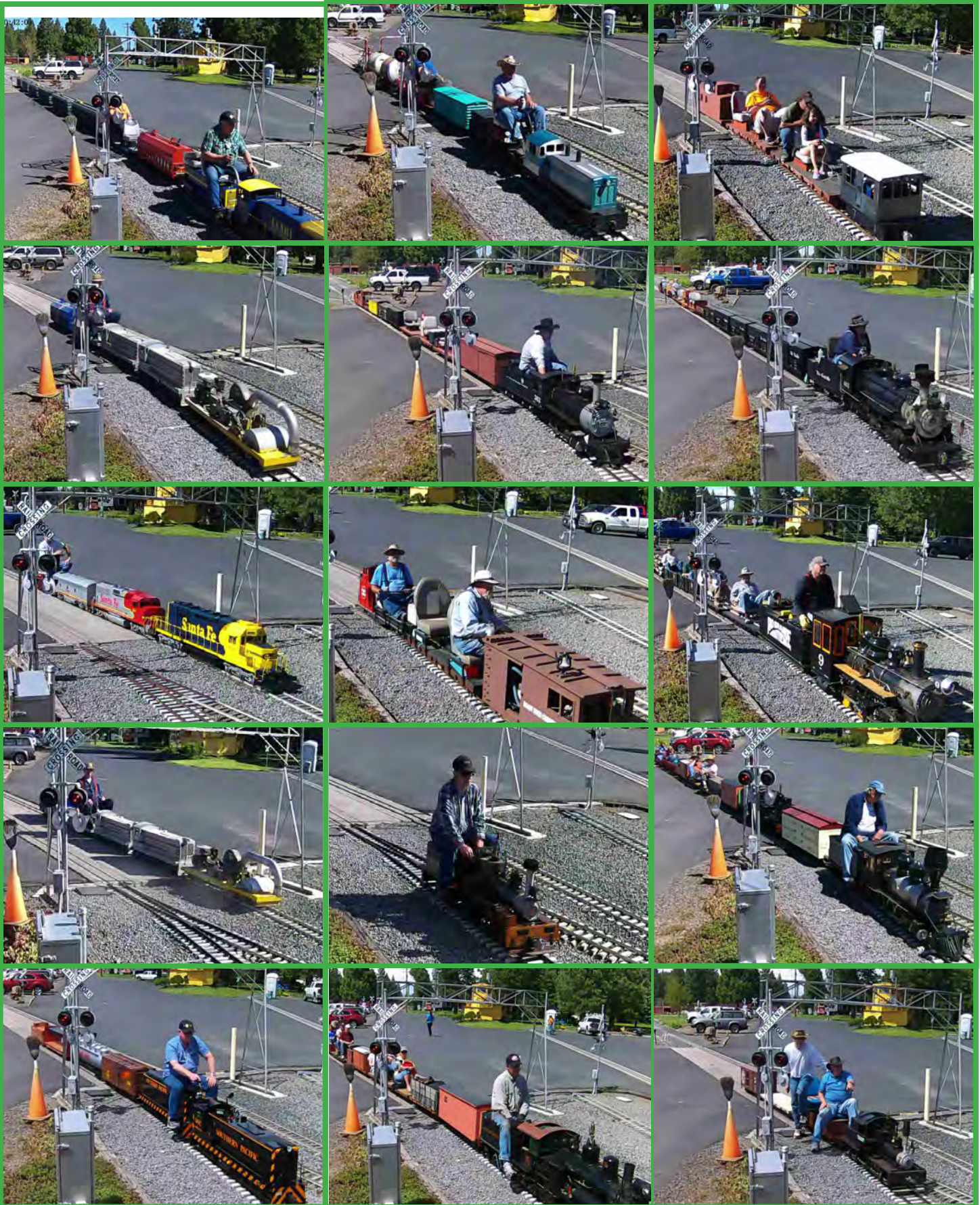
If **YOU**, as a member, open the gate and allow visitors to pass through - **YOU** are responsible to see that the release has been completed. Releases are available in the mailboxes near the office for those times the office is closed. There are also releases available in the kitchen and in the back shop.

If you do not want to, or do not have the time to, ensure that the releases are completed - then please graciously explain that the train park is closed to visitors and that the open hours are normally (Winter) 10:00 AM until 2:00 PM Monday through Friday. To arrange other hours visitors should call the office at 541-783-3030.

WEB-CAM GALLERY

Photos by: The Web-Cam







Register for the Triennial Meet now!!

Please Use the Online App to Register or Join-- <http://tmrrmembers.org>

CLASSIFIEDS

Building Lots For Sale!

Train Mountain member has 4 nice home / vacation building lots for sale.

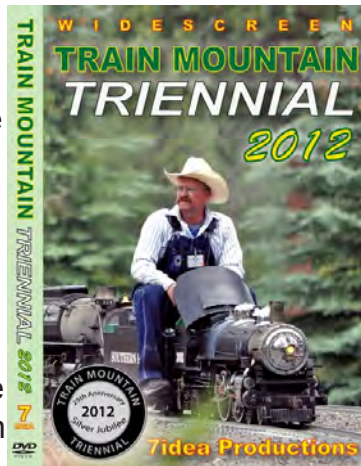
Prices reduced! Lots are located in an established subdivision just a few minutes from Train Mountain. Home owners association provides free water and well maintained all-weather roads. Lots range in size from .7 acre to .25 acre, all lots have phone and water to the lot, 1 has power to the lot, power close by the other 3 lots.

Cash or short term contract.

Priced from \$7,000 to \$8,500 (below tax value).

Call owner at 360-673-2277 or 360-703-7063.

The terrific video that Aaron Bentsen from 7Idea Productions shot at the 2012 Triennial is available through the main office at Train Mountain. Give them a call at 541-783-3030 and get your on the way to your place. It's \$30 for the video and \$3 shipping and handling lower 48, \$4 S&H for all others. A most enjoyable video shot by a true video artist and of course our favorite subject, Train Mountain!



Our good friend Jim over at Discover Live Steam has also placed ads for us on his terrific website, thanks Jim. www.discoverlivesteam.com

Did you see the great article and front cover story from the January / February 2013 issue of Live Steam and Outdoor Railroading? It is a most complimentary article about the facility and the great gang of folks that hang around the place and put on terrific live steam train meets. Pretty cool! www.livesteam.net/home



**Donations\$
Needed!**

HAVE SOMETHING YOU WANT TO SELL?

Place an ad in the Gazette!

1/8 Page: \$25/month or \$250/year

1/4 Page: \$40/month or \$400/year

1/2 Page: \$70/month or \$700/year

Full Page: \$125/month or \$1250/year

Published by Train Mountain Railroad

P.O. Box 438

Chiloquin, OR 97624

Email: info@tmrr.org Phone: 541-783-3030

Contributors: TMRR BOD, Friends, TMI

Photos: Tom Watson



For Sale: \$125,000!

Cozy 550 sq. ft. cottage on beautiful wooded 10 acres with breath taking views of Agency Lake. Close to Train Mountain



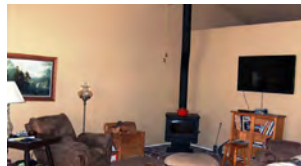
Railroad and Crater Lake Park.

Contact
Crater Lake
Realtor,

Cindi Combs, 541.891.3580.

34211 Brittany Ct
Klamath Falls, Oregon

\$187,500



BEAUTIFUL HOME IN THE PINES

Stacy Ellingson
Principal BROKER



541.591-4322
SEllingson@cbkfalls.com

Beautiful home in the pines. Many updates through out the home. Hickory cabinets, ceramic tile floors, trex decking and fenced back yard. Small work shop. All the furniture is for sale also including the snow blower and 7 cords of wood. All full price offers include the 7 cords of wood, the new refrigerator, snow blower, washer & dryer and stand up freezer in garage. All other offers appliances and furniture negotiable.

Beds: 3 | Baths: 2

- Many Updates
- Hickory Cabinets
- 2 acres

www.cbkfalls.com/84940
MLS: 84940

Coldwell Banker Holman Premier Realty | 3815 South 6th Street, Suite 110 | Klamath Falls, OR 97603
Each office independently owned and operated. Equal housing opportunity. ©2014.

FOR SALE :

Uintah #50 and Water Car #023, 7½ gauge, 2½ scale, propane fired

PRICE: \$65,000

TRAILER ADDED: Additional \$3,000 (trailer specifically set up for engine and water car)

WILL BE ON DISPLAY AND RUNNING AT THE 2015 TRIENNIAL

For Information contact Kevin Shuler at 801-502-6647



Located only 1.5 miles off Hwy 97 in Downtown Chiloquin in the same building as the Post Office
212 1st Avenue, Chiloquin, OREGON 97624 -- Phone: (541) 783-0988





100 Acres For Sale near Train Mountain

A train guy's dream! Build your home and shop on this 100 acre property. Lots of trees, beautiful meadows, aspen groves, wildlife, and room for miles of your own track on mostly flat ground. Approximately 800 feet of frontage on South Chiloquin Road within five minutes from Train Mountain. Could be subdivided. (\$400,000 - OBO)

Call Lew at (541) 783-3434 for more information.

Quentin Breen's Amtrak, gifted to Sharon, unfortunately must be sold. Vanguard engine with new battery, hand-held controls & six matching gondola cars for \$18,000. Cars are great for your lunches, misc. tools, fire equipment or pets. Cab-excellent shape, cars-can use touch-up paint.

Contact: sharonbreen87@gmail.com





Kla-Mo-Ya Casino

34333 Hwy 97 N
Chiloquin, OR 97624
541-783-7529 or 1-888-KLAMOYA
www.klamoyacasino.com

Kla-Mo-Ya Casino opened in 1997 and is owned and operated by the Klamath, Modoc and Yahooskin Tribes. Set in the beautiful pines of Southern Oregon, we are located on Highway 97 near the junction of Highway 62 (Crater Lake Highway).

We are open 24 hours a day, 365 days a year, and welcome travelers and groups from across the country year round.

Our Peak to Peak Restaurant is open 24 hours a day, with a full service lounge and beverage service available out on the gaming floor. Choose from great menu items like juicy steaks, classic salads and pastas, or try our beefy Triple 7 Burger if you are *really* hungry. Dine in or take out, we have a host of friendly staff to serve you. Check out our current menu from the Dining page of our website, and watch for monthly special features. The Peak to Peak restaurant welcomes groups, meetings or parties for special occasions.

Open from 7am to 9pm, the Espresso Bar serves a wide variety of espresso and coffee drinks, hot or cold, as well as fruit smoothies, frozen yogurt, desserts, and quick to-go lunches.

Our gaming floor has 344 slots with new games and themes being brought in all the time. Find out about our current slot promotions and check out recent jackpot winners on our website and Facebook page.

Try your hand at one of our four Blackjack tables. We offer double deck and six-deck blackjack with \$3 tables available every Monday. Keep up with promotions and tournaments available by checking our website.

Hours of operation:

Weds & Thurs: 12 noon – 8pm

Friday through Sunday: 12
Noon – 12 Midnight

(closing times may vary depending on play)

Stop by the Bonus Club to sign up for a free membership card to earn rewards and qualify for our many promotions and giveaways. While you are there, browse through the unique selection of items in our Gift Shop.

RVers, Truckers and large vehicles are always welcome, with plenty of free overnight parking available. Stop by the Bonus Club to ask about discounts and perks.

Come enjoy the warmth and excitement of Kla-Mo-Ya casino.



Crater Lake Junction Travel Center

34005 Hwy 97 N
Chiloquin, OR 97624
541-783-9800

The Crater Lake Junction Travel Center opened for business in 2010, and is owned by the Klamath, Modoc and Ya-hooskin Tribes. Open 24 hours a day and located just next door to Kla-Mo-Ya Casino as you enter, this travel center offers competitive fuel prices and many convenience items.

Travelers can fuel up with gas, diesel, or propane. Stop in for a snack or soda, or grab a quick meal featuring Mexi-Go or Mountain Fresh Pizza. Free Wi-Fi, a comfortable lounge with large screen TVs, laundry and shower facilities, and ATMs are all available.

Make sure to ask for a Crater Lake Junction Travel Center rewards membership card so that you can earn points for each purchase and visit. Your earned points can be applied toward future purchases.

Truckers, ask about trucker services and benefits for each visit. Convenience items and truck accessories are for sale, along with many useful daily provisions.

Crater Lake National Park

Crater Lake National Park is located off Highway 62, just 34 miles from Kla-Mo-Ya Casino and the Crater Lake Junction Travel Center. After playing and fueling up, discover the world-famous beauty and amazing history of Crater Lake. Groups and parties, ask about casino shuttle service for your outing or adventure.

Shuttle Service to and from Train Mountain

Kla-Mo-Ya Casino and the Crater Lake Junction Travel Center are also offering a free shuttle service for Train Mountain Members, Guests and Visitors.

Train Mountain people should see the TM Office for more details as we get this service implemented.

Youngstown Chronicle -- by Chad Terbocks

After all of the drama, Abigail Rainwater the new school teacher, recently displayed when refusing to move into one of the rooms above Daffodil Station because the owner also owns the Chateau DaBroi Winery, the latest rumor has her moving into the room in the rear of the saloon. The Youngstown School Board is now investigating.

The Youngstown Company Store reports their business is booming following their recent remodel.

The Kludt Construction Company are now booked through next year with remodel jobs around town. Nevertheless, the entire company has gone north for the winter (Go Figure!).



Sheriff Izzy Guilty, son of Judge Ulysses R. ("UR") Guilty, reports there has been no crime reported in Youngstown this month. As a result, the Town Council has threatened to close the jail to save money, but Sheriff Izzy has warned that closing the jail would be a bad idea. The Red Rose Saloon has been closed for remodeling all month, but has now reopened. A large group of local ladies noticed how quiet and peaceful the town became while the saloon was closed, and are organizing a temperance movement. Sheriff Izzy is now expecting trouble stating, "We're going to need that jail!"



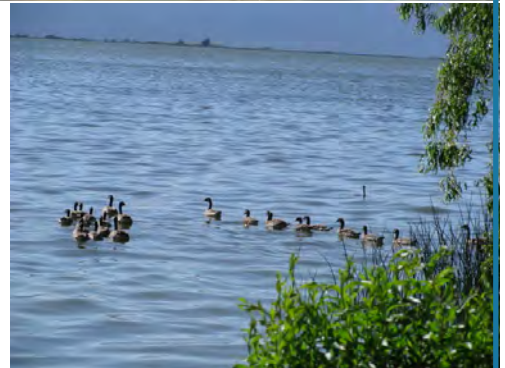
Reggie and Ethyl Moregas report their newly remodeled gas station is doing a booming business from the numerous minors passing through on their way to the gold fields at Lillyville.

Alec Tricity, manager of Blackout Electric, reports the damage from last month's thunder storms has all been repaired.





Agency Lake Resort is up for sale!
 A small peaceful resort with 4 cabins,
 17 hook-ups, tenting, boat parking/
 rental, & tremendous mountain &
 lake views. The dock & launch offer
 access to bird watchers, fishermen, bird
 hunters, water skiers and swimmers. A 3
 bedroom home for the hosts, 2 garages,
 extra buildings, & development space on
 the 3.64 Ac.



Train Mountain is only 5 miles away. What a retirement plan. Asking \$479,000. Call for info from Action Realty at 541-884-3367 or Sharon Breen at 541-891-2040. Seller will look at reasonable offers, possession negotiable

EXTREME FIRE DANGER

Southern Oregon and Train Mountain are experiencing the worst fire danger conditions in recent history. Everyone planning on running a train at TM should be aware that state and federal laws combine to require every vehicle (this includes your train) to carry a 2.5 pound ABC Fire Extinguisher, one gallon of water, an Axe or Pulaski with a handle at least 26 inches in length and a head weight of not less than two pounds, a Shovel not less than 26 inches overall length and a blade not less than eight inches wide. Also, you cannot go off of the pavement on Train Mountain roads without this same equipment in your private vehicle. If you plan to drive your pickup, for example, to the Big Build job site you must carry the above equipment in that vehicle. The local forestry officials are enforcing these requirements, and the fines for non compliance are substantial.

PHOTO GALLERY

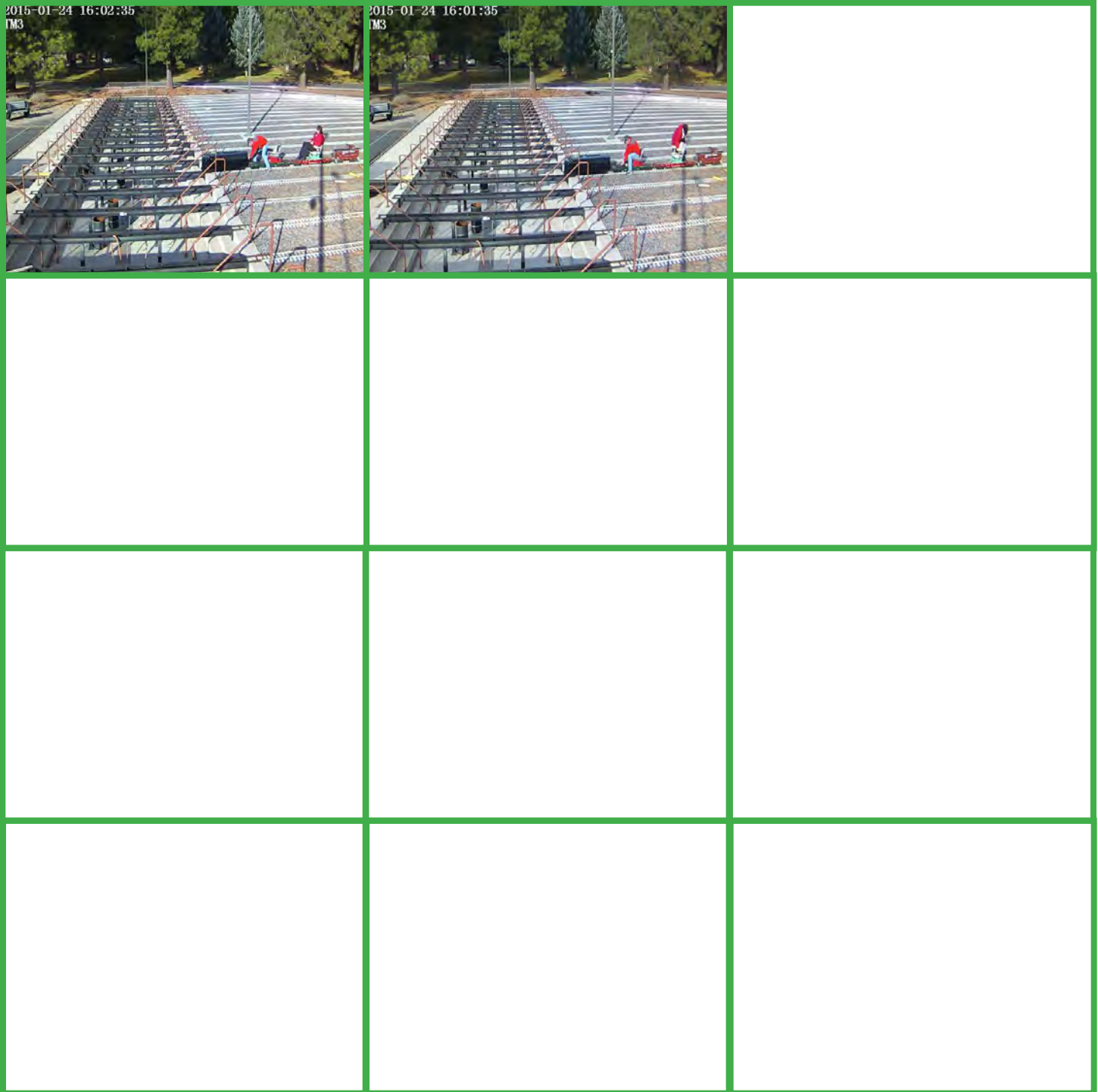
Photos by: Tom Watson, Dennis Ward, and Joel Grasmeyer

Register for the Triennial Meet now!!

Please Use the Online App to Register or Join-- <http://tmrrmembers.org>

WEB-CAM GALLERY

Photos by: The Web-Cam



Register for the Triennial Meet now!!

Please Use the Online App to Register or Join-- <http://tmrrmembers.org>

From the President - Tom Watson

Not only is the Triennial in June of this coming summer, but on May 15-17, 2015, we are hosting a regional Boy Scout Camporall at Train Mountain. Their last Camporall, four years ago, was attended by 750 Scouts.

The Scouts will set up camp in South Meadow, which will be their main activity center. However, they will be setting up "Events" in many areas of our "Southside" facility (south of South Chiloquin Road), and will be using the entire Vendor Building.

This means that all of the "STUFF" presently occupying the Vendor Building MUST BE REMOVED by May 1, 2015.

No Exceptions, as we must have sufficient time to clean and prepare the area for the Scouts and the Triennial.

The Scouts have requested Shuttle Trains to haul the boys between Events. We will need many volunteers for this and other chores associated with showing off our facility to the Scouts, their leaders and families. We need volunteers that can bring equipment and volunteers that can just come to help out.

We had a specific request to have as many trains as possible on display.

Any one wishing to help with any of these activities please contact the Train Mountain Office.

You Must BE a Current Train Mountain Member to bring Equipment

If you wish to bring equipment to the 2015 Triennial, you **must** complete and submit both pages of the Triennial Registration Form, and you **must** be a current 2015 Train Mountain Member or include a completed 2015 Membership Application Form with your Triennial Registration Form.

We cannot complete these Forms over the telephone, nor can we make promises over the phone without the paperwork. There are simply too many people coming to the Triennial to keep it all straight without paperwork.

You will not be given a Track Assignment until the paperwork, current Train Mountain Membership and both pages of the Triennial Registration Form, have been received at the Train Mountain Office.



REMEMBER: No job is complete without the paperwork!

We will continue to accept payment via Credit Card over the phone providing you have mailed the Forms to the Train Mountain Office. We will attempt to answer all questions if you contact the office via telephone or email.