



The Mountain GAZETTE

© Copyright 2015, Train Mountain Railroad

An Official Publication of the Train Mountain Railroad - Issue: Vol. #3 Issue #29 - Dec 2015

Holiday Express

A great time was had by the volunteers and the visiting public. We experienced the worst of weather the first Saturday and the last Sunday, and decent weather the first Sunday and the last Saturday.

When the weather was bad, the snow was coming sideways with winds gusting to 50 mph. Our hardy outside volunteers did a great job keeping everything running.



Many thanks to all those that made this event a success.



The inside crew had much better working conditions!





**Thanks to
Delores
for taking
care of the
Store!**

**Dr. Larry
contemplating the
situation!**



**Dr. Larry
contemplating
another
situation!**

***It should be noted that Dr. Larry
is the Official Contemplator.
He did not have either train wreck!***

Winter Wonderland at Train Mountain

by Dennis Ward

The Holiday Express was reintroduced at Train Mountain over the weekends of 12/13 and 19/20 December. Mother nature did her part. We had snow every day. Saturday the 12th it snowed most of the day and put down a good base. Sunday was mostly partly cloudy. Saturday the 19th was beautiful with a light snow just before the event started then scattered clouds though out the day. Sunday (the 20th) the weather proved more than the volunteers could handle.

It was snowing when we got to Train Mountain at about 8 AM and continued as we got a train out to plow a route from the entrance at Train Mountain to the “North Pole”. I had a small derailment problem with the light engine when a failed to clear the points of trailing point switch on one of our alternate routes. A second trip, around the main route was uneventful.

We then backed in to the Backshop and picked up our passenger consist. With Larry DaBroi as my conductor there was no problem from the Backshop around to the loading/unloading area at the main entrance to Train Mountain. We picked up about nine passengers and manage to get them to unloading/loading area at the Hall of Flags (i.e., the “North Pole”) without incident. There is where the magic ended. By the time we got to the grade crossing on the east side of Central Station we had two empty cars on the ground. We got those back on the track. Then by the time we got back to the loading/unloading we had three cars on the ground. We packed it in. Time – about 10 AM.

Larry, Al Taylor and I determined that ice was adhering to the tires and as it built up the flanges disappeared. We decided it was time to park the train. We had to re-rail the cars well over a dozen times by the time we got to the Backshop. In fact, we stopped at the west end of Containerville, broke up the train and, with Gil Dominguez’s help, moved it one car at a time unto track twenty of the Backshop. It was 11:30 by the time we finished that project.

By the time we got back to the entrance to help with parking – others of the volunteer corps determined, that due to extreme icy condition, that the remainder of the event be canceled.

Oh, by the way, by dressing right to stay warm and dry I had a ball and plan to play in the snow some more tomorrow.

See [Tom Watson’s videos](https://www.youtube.com/user/twatson703?feature=mhsn) of the event at: <https://www.youtube.com/user/twatson703?feature=mhsn>

This was written in the late 70's by a clerk on the Milwaukee Road at Kent, WA

T'was the night before Christmas, I was working second trick,
When the dispatcher cried out, "get me the order board clerk quick."

The Call Boy came on, "Hey whats up man"
"Call me a crew, just as fast as you can."

"Everyone's laid off" he started to explain
"I couldn't raise enough men to run a toy train."

"O.K." said the dispatcher, "Then here's what we do...
...although we'll probably be time slipped by the U.T.U."

"Your crew is as follows..." He took a slight pause,
...four elves, eight reindeer and a Hog head named Claus."

Then he order up engines, "Give 'em four of our best,
And use the caboose off that Dead Freight West."

The crew arrived, and asked for their train,
"She's all made up on the outbound main."

They made a quick air test, and were then on their way,
"What" cried the Dispatcher, "No terminal delay?"

Meanwhile at the depot, in my telegraph bay,
I thought of tomorrow, it would be Christmas Day.

The train orders were hung in the hoop rack with care
In hopes that the "Special" soon would be there.

When suddenly in my block light what should appear?
But a mainline Local, with a fat jolly Engineer.

I jumped up from my seat, and ran outside quick,
I could tell by his markers it must be Saint Nick.

With a nice gentle stop, he pulled up on the main,
Made a quick set out and coupled back on his train.

To see this crew switching, was a comical sight,
But I heard Santa comment, "We'll make local pay tonight"

Matching Fund Still Open for End of Year Donations

By: Jerry Crane

The end of the 2015 tax year is fast approaching. If you are considering end of year giving, we are asking you to please consider making a tax deductible donation to the Train Mountain track building matching fund.

Last year Carl Vanderspek and Marg Hope offered a \$100,000 fund that would match any donations to Train Mountain for new track installation, dollar for dollar. This offer is still open.

Any donation amount would be appreciated and it will be matched by Carl and Marg.

If you are a US tax payer, your donation is tax deductible to the extent the law allows. It is easy to make a donation. You can simply send a check to Train Mountain Institute, PO Box 438. Chilquin, OR 97624. If you prefer to use a credit card, you can call the office at 541-783-3030 and ask for Joyce. She will take your information and make sure your donation gets recorded. I will make sure you receive a letter from Train Mountain that you can use to support your tax deduction.

Our goal for 2016 is to replace the aluminum on wood track from Crisp Bridge to Hill Top Crossing with steel track on plastic ties. This is the section of track that runs by the Colton Cement Plant. With your help we can get this done. Thank you.

Help Needed Now for 2016 Big Build

The September Big Build in 2016 will replace the existing track from Cox Bridge to Hill Top Crossing. This is the section on track that runs from Central Station to the Serpentine in front of the Colton Cement Plant. This section of aluminum on wood track will be replaced with steel on plastic track.

This is a section of double track 1,350 feet long. Therefore, the replacement work will require 2,700 feet of track or 270 pre-made track panels. We presently have about 70 track panels constructed, so we need to build 200 more before next September.

We are looking for volunteers that would like to help this winter in the track shop. You don't need any special skills. Richard will show you what needs to be done and he will pre-bend the required rails. The work is mostly loading jigs and operating powered screw guns. You don't have to work all winter. Any amount of time that you could donate would be appreciated. If you could come and work for a few days, it would be a great help.

If you have any question or if you are willing to help, please call the office at 541-783-3030 or drop us a line at info@tmrr.org.

Thank you.

Visitors to Train Mountain:

Train Mountain is very popular and is continually attracting visitors from throughout the world. We announce that our hours are from 10:00 AM until 3:00 PM Monday through Friday during the summer, and 10:00 AM to 2:00 PM during the winter. The office is closed on weekends except during meets, and then only when volunteers are available to open the office.

Our insurance advisors request that all people (members and visitors) complete and sign a liability release. If **YOU** as a member encounter visitors on the property without a visitors pass please direct them to the office so that we can insure that a release has been completed and a visitors pass has been issued.

If **YOU**, as a member, open the gate and allow visitors to pass through - **YOU** are responsible to see that the release has been completed. Releases are available in the mailboxes near the office for those times the office is closed. There are also releases available in the kitchen and in the back shop.

If you do not want to, or do not have the time to, ensure that the releases are completed - then please graciously explain that the train park is closed to visitors and that the open hours are normally (Winter) 10:00 AM until 2:00 PM Monday through Friday. To arrange other hours visitors should call the office at 541-783-3030.

Notice to all Members

Due to security concerns, the Gate Code for the Train Mountain Main Gate was changed after the Triennial. Any Member planning to arrive at Train Mountain when the Office is closed will need to contact the Office prior to arrival to arrange to get the new Gate Code.

Train Mountain is a NO SMOKING Facility

During recent events, many Members and their Guests have been ignoring this policy. There are only three designated smoking areas at Train Mountain:

- (1) Outside the front of the Backshop
- (2) Outside the east door of the Hall of Flags
- (3) Outside the Motor Pool (Maintenance Building)

Due to the high fire danger at Train Mountain during the summer, we have zero tolerance for anyone smoking outside one of the designated areas.

There is NO SMOKING anywhere out on the track!

Members, Guests, and Visitors that continue to violate the Train Mountain Smoking Policy may be asked to leave.

Please submit your volunteer hours. If you work off site or at home on Train Mountain projects - these hours count.

Train Mountain Volunteer Hours

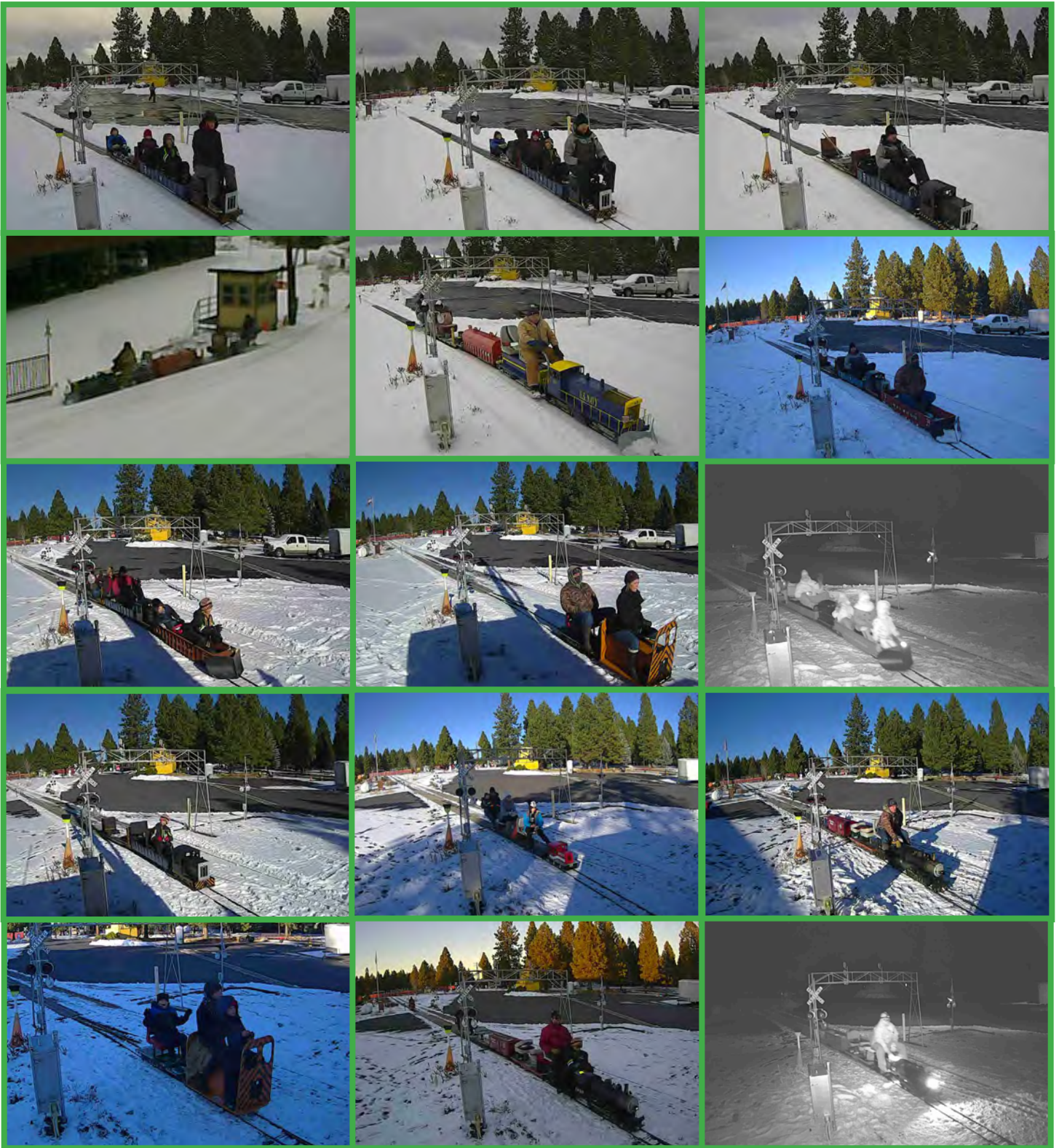
Name: _____

Month & Year: _____

Date	Project(s) Worked On	Number of Hours
Total Hours		

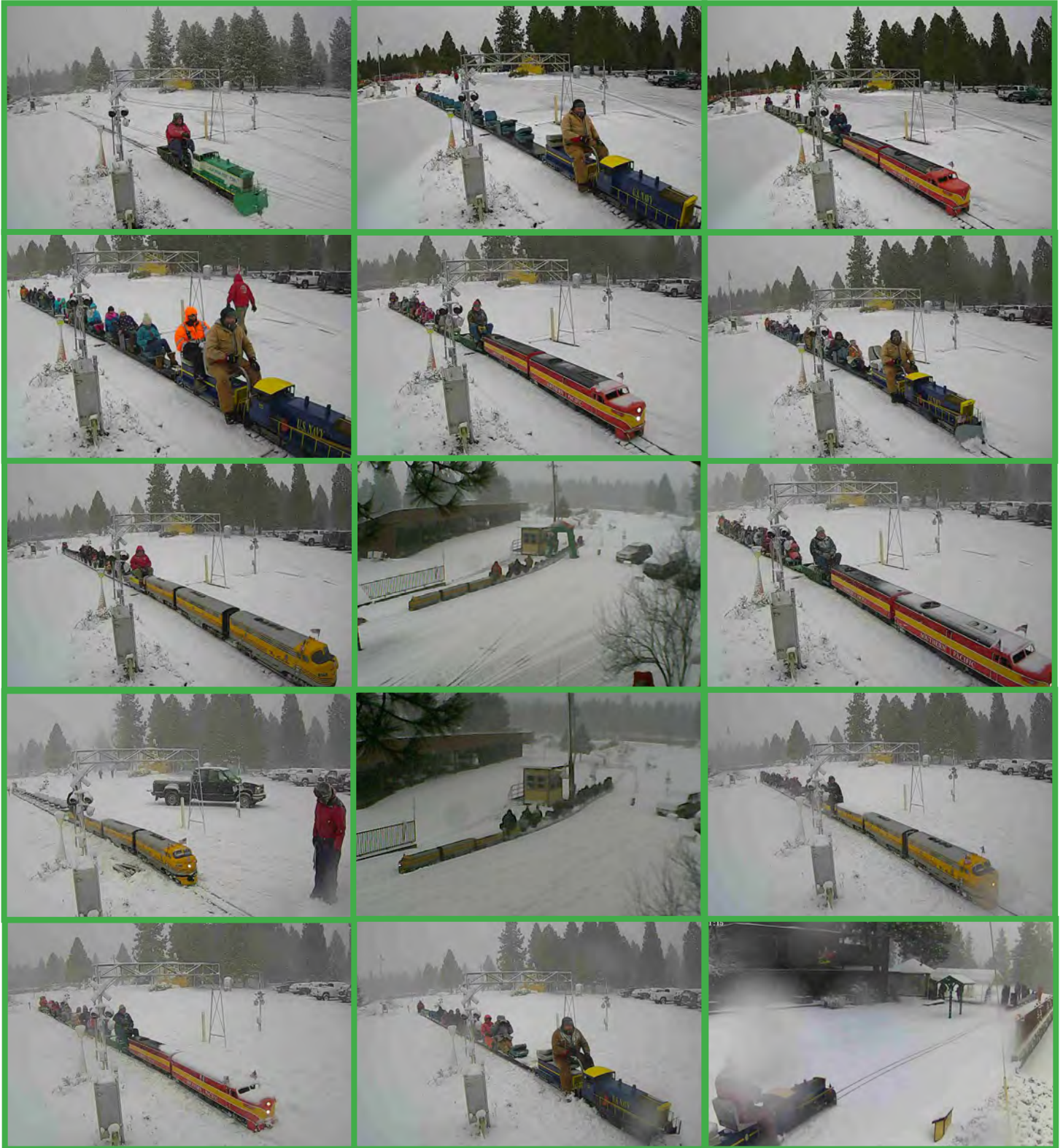
WEB-CAM GALLERY

Photos by: The Web-Cam



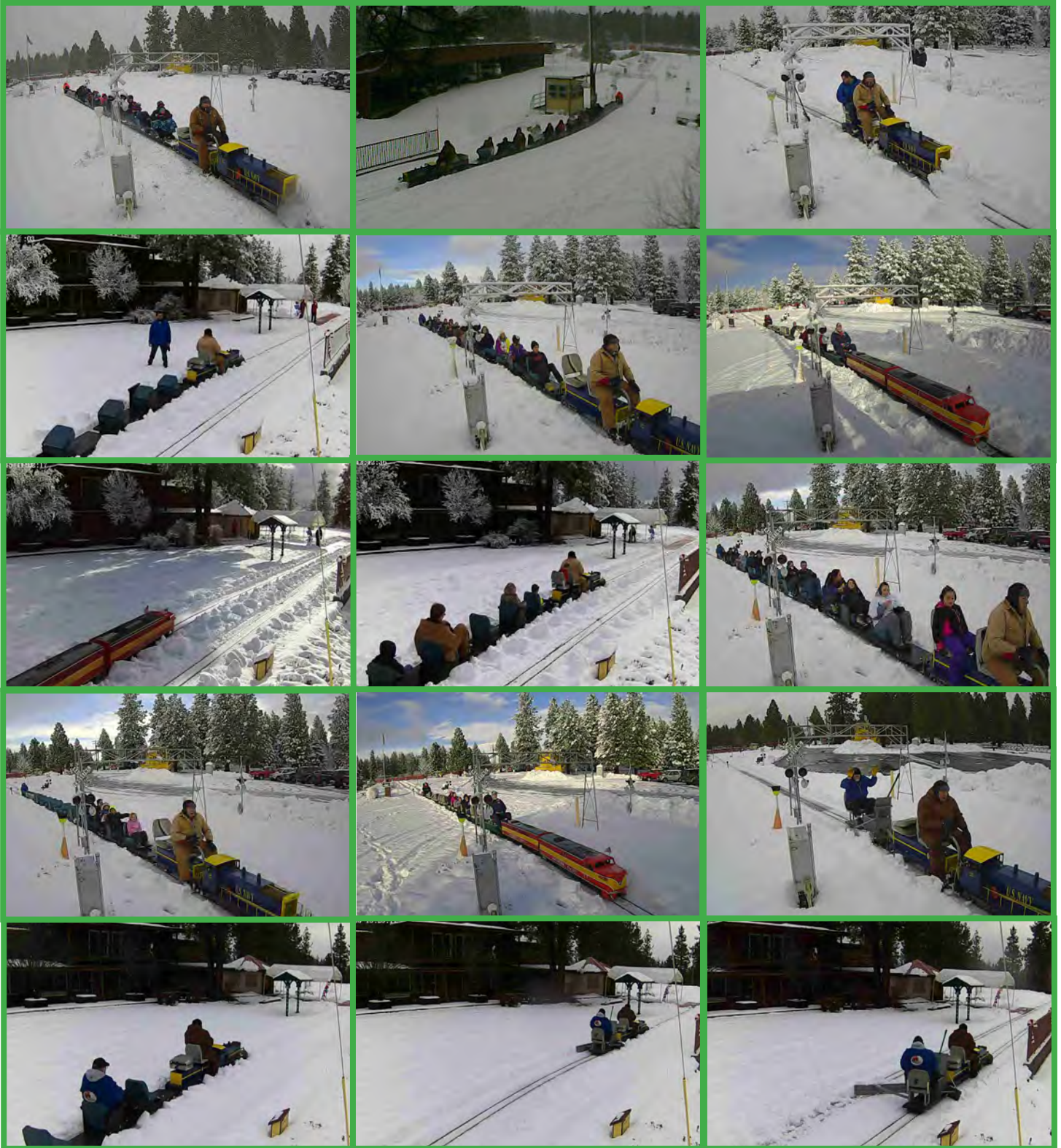
WEB-CAM GALLERY

Photos by: The Web-Cam



WEB-CAM GALLERY

Photos by: The Web-Cam



WEB-CAM GALLERY

Photos by: The Web-Cam

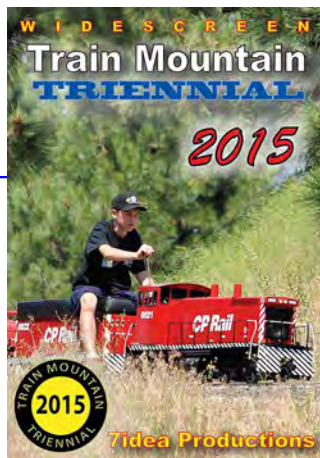


CLASSIFIEDS



2015 Triennial Video is available now!

The 2015 Train Mountain Triennial video from Aaron Bentsen at 7Idea Productions is now available through the [Train Mountain on-line store](#) or the main office at Train Mountain. Give them a call at 541-783-3030 and get a copy on the way to your place. It's \$29.95 for the video and free shipping and handling lower 48, \$6 S&H for all others. A most enjoyable video shot by a true video artist and of course our favorite subject, Train Mountain!



Our good friend Jim over at Discover Live Steam has placed ads for us on his terrific website, thanks Jim. discoverlivesteam.com

Did you see the great article and front cover story from the November / December 2015 issue of Live Steam and Outdoor Railroading? It is a great article covering the 2015 Triennial. and the great gang of folks that hang around the place and put on terrific live steam train meets. Pretty cool! web://livesteam.net



**Donations\$
Needed!**

HAVE SOMETHING YOU WANT TO SELL?

Place an ad in the Gazette!
 1/8 Page: \$25/month or \$250/year
 1/4 Page: \$40/month or \$400/year
 1/2 Page: \$70/month or \$700/year
 Full Page: \$125/month or \$1250/year

Published by Train Mountain Railroad
 P.O. Box 438
 Chiloquin, OR 97624
 Email: info@tmrr.org Phone: 541-783-3030

Contributors: TMRR BOD, Friends, TMI
 Photos: Tom Watson



From the 1930s to the 1950s, the Super Chief was Santa Fe's premiere all room Pullman sleeping car train that ran daily from Chicago to Los Angeles.

Now you can relive the splendor and excitement of a Past Era as you travel in style and comfort aboard two of the Santa Fe Super Chief's historic railcars.



"The Acoma"

Relax with family and friends in Elegant Style as you unwind riding the rails on the "Acoma" lounge car to your destination.

Each night, you will sleep in classic comfort aboard the accommodations of the "Palm Leaf" sleeper car.

For more information please contact:

Ron Ashcraft (505) 220-3780 or Mike Mulder (209) 648-2485 or visit our website at www.pswra.com



"The Palm Leaf"



Pacific & Southwest Rail Adventures



**Comfortable Seats and Easy Riding, Wonderful Food and Excellent Service
A Memorable Experience on This Extraordinary Train**



Located only 1.5 miles off Hwy 97 in Downtown Chiloquin in the same building as the Post Office
212 1st Avenue, Chiloquin, OREGON 97624 -- Phone: (541) 783-0988





Kla-Mo-Ya Casino

34333 Hwy 97 N
Chiloquin, OR 97624
541-783-7529 or 1-888-KLAMOYA
www.klamoyacasino.com

Kla-Mo-Ya Casino opened in 1997 and is owned and operated by the Klamath, Modoc and Yahooskin Tribes. Set in the beautiful pines of Southern Oregon, we are located on Highway 97 near the junction of Highway 62 (Crater Lake Highway).

We are open 24 hours a day, 365 days a year, and welcome travelers and groups from across the country year round.

Our Peak to Peak Restaurant is open 24 hours a day, with a full service lounge and beverage service available out on the gaming floor. Choose from great menu items like juicy steaks, classic salads and pastas, or try our beefy Triple 7 Burger if you are *really* hungry. Dine in or take out, we have a host of friendly staff to serve you. Check out our current menu from the Dining page of our website, and watch for monthly special features. The Peak to Peak restaurant welcomes groups, meetings or parties for special occasions.

Open from 7am to 9pm, the Espresso Bar serves a wide variety of espresso and coffee drinks, hot or cold, as well as fruit smoothies, frozen yogurt, desserts, and quick to-go lunches.

Our gaming floor has 344 slots with new games and themes being brought in all the time. Find out about our current slot promotions and check out recent jackpot winners on our website and Facebook page.

Try your hand at one of our four Blackjack tables. We offer double deck and six-deck blackjack with \$3 tables available every Monday. Keep up with promotions and tournaments available by checking our website.

Hours of operation:

Weds & Thurs: 12 noon – 8pm

Friday through Sunday: 12
Noon – 12 Midnight

(closing times may vary depending on play)

Stop by the Bonus Club to sign up for a free membership card to earn rewards and qualify for our many promotions and giveaways. While you are there, browse through the unique selection of items in our Gift Shop.

RVers, Truckers and large vehicles are always welcome, with plenty of free overnight parking available. Stop by the Bonus Club to ask about discounts and perks.

Come enjoy the warmth and excitement of Kla-Mo-Ya casino.



Crater Lake Junction Travel Center

34005 Hwy 97 N
Chiloquin, OR 97624
541-783-9800

The Crater Lake Junction Travel Center opened for business in 2010, and is owned by the Klamath, Modoc and Ya-hooskin Tribes. Open 24 hours a day and located just next door to Kla-Mo-Ya Casino as you enter, this travel center offers competitive fuel prices and many convenience items.

Travelers can fuel up with gas, diesel, or propane. Stop in for a snack or soda, or grab a quick meal featuring Mexi-Go or Mountain Fresh Pizza. Free Wi-Fi, a comfortable lounge with large screen TVs, laundry and shower facilities, and ATMs are all available.

Make sure to ask for a Crater Lake Junction Travel Center rewards membership card so that you can earn points for each purchase and visit. Your earned points can be applied toward future purchases.

Truckers, ask about trucker services and benefits for each visit. Convenience items and truck accessories are for sale, along with many useful daily provisions.

Crater Lake National Park

Crater Lake National Park is located off Highway 62, just 34 miles from Kla-Mo-Ya Casino and the Crater Lake Junction Travel Center. After playing and fueling up, discover the world-famous beauty and amazing history of Crater Lake. Groups and parties, ask about casino shuttle service for your outing or adventure.

Shuttle Service to and from Train Mountain

Kla-Mo-Ya Casino and the Crater Lake Junction Travel Center are also offering a free shuttle service for Train Mountain Members, Guests and Visitors.

Train Mountain people should see the TM Office for more details, schedules, and special events.