



## Spring Must be Here

by Tom Watson

It must be Spring because during the last two weeks it has been warm with nice sunny days, it has been wet with thunder and lightning, and we even had a blizzard. Welcome to Oregon!

None of that slowed down the local Oregon Ducks, nor did it slow down the rain forest country Kitsap Krew or the pterodactyl mosquitoes. Yes, it is important that those visiting Train Mountain bring supplies and clothing for all conditions. As we often remind everyone, don't forget your rain gear and warm clothing, your sun hat and light clothing, sunscreen, insect repellent, drinking water, medications, and lunch if you will be out all day. It is not unusual to need all of these items sometime during the same day.

As described in other articles, the Kitsap Krew worked on many different projects. Most were of the type that require a large crew to complete. During the second Kitsap week, Dick Peterson and his helpers worked on getting some of the Train Mountain rolling stock serviced.

Boyd has been busy weed spraying and working in the Backshop, but he has been getting quite lonely out there in the Backshop - particularly when it comes to getting any help doing all the maintenance work. When you come to TM and wonder what you can do, don't forget to check with Boyd to see if he needs any help.

There is also the morning meeting at Central Station at 8:30 am, Monday through Friday, when the volunteers get together organize the project(s) of the day. During meets and events the morning meeting also occurs on Saturdays and Sundays.

## Working on the Grand Junction 4 - way access realignment

### Getting the old track out



No, Train Mountain does not have any of this track for sale. We will be rebuilding and using all of our aluminum track panels for yards, sidings and spurs.

### Putting the new track back in





Cleaning up the mess



# Kitsap Work Week

By Jeff Mills

The Kitsap Crew arrived at Train Mountain with goals to accomplish during the work week. The new transfer-lift for the expansion of Containerville was our focus. The Thursday night group has spent the winter gathering and manufacturing parts to complete the transfer-lift. Jim Davenport got the hydraulics working and we were finally able to obtain the full range of lift capacity. Jerry Crane and Jeff Mills got the wheel support brackets aligned in preparation for welding by Dustin. The gauge of the track is now determined.



The next phase of this project is installation of the support piers for the transfer rails. Their placement has been laid out. It has been decided it would work best to dig a trench rather than individual post holes for the support piers. This should allow easier alignment of the piers due to the rocky soil conditions in that location.

During the week, we found and moved 60-pound rail to allow the transfer-lift to move between containers. We were Gandy Dancers and got first-hand experience with full-size railroad work. Conrad Watne, Richard Cox and Jeff Mills started by moving a caboose and flatcar to remove the rails from those ties. Jim and Jerry joined later to assist moving two box cars and three tank cars and obtain four more sections of rail. The next day Dustin brought the dump truck and trailer to haul the rail down from



Caboose Ridge. Richard used the backhoe with rail tongs to load the rail. We were able to collect approximately 600 feet of 60-pound rail.



Saturday and Sunday, our crew teamed up with John Cooper and Dennis Ward to work on the Grand Junction reconfiguration. At the last Triennial it became apparent even one derailment or failed switch held-up the entire railroad at Grand Junction. Therefore, the ultimate goal of this project is to install two sets of track feeding into four different routes. That should reduce the bottle neck at Grand Junction.



Dennis Weaver and his Grandson Zack Lennon arrived on this Sunday afternoon in the second wave of Kitsap workers. Shortly behind them were Dick Peterson and Dave White. They will be tackling a long list of jobs in preparation for the Spring Awakening meet.

The Kitsap Crew had fun and accomplished a lot and went to bed every night very tired.

# Name Resurrection

By Jerry Crane

As you can see from articles in the last few Gazette publications, we are trying to improve our fund raising situation by presenting Train Mountain to the public as a significant railroad museum.

To this end we have resurrected the name

## ***Train Mountain Railroad Museum.***

This will not be a new corporation, just a “doing business as” name used by Train Mountain Institute. This name will be used on fliers, post cards, store merchandise, etc.

Fliers will soon be going out inviting visitors to the area to stop by our museum. We are a member of the ***Crater Lake's Backyard*** association that is made up of tourist businesses in our area. They will all have our fliers and will be sending visitors our way. At the present time, we are not charging any entrance fee. We believe we are receiving more in donations from the visitors than we would from entrance fees.

As members, please be welcoming to any visitors you encounter. Our long term financial survival is dependent on our effort to become a recognized museum.

## How Can I Help Train Mountain Railroad Museum

Most of you are not locals. You all want to help Train Mountain Railroad Museum in some fashion, so the question is how to help? The answer is **PROMOTE!** What do I mean by *promote*? If you have a steam engine *promote* the hobby of LIVE STEAM. If you have a diesel or battery powered *promote* the hobby of RIDING SCALE trains. How do you *promote*? How about doing a presentation to your local Boy Scout troop, or your local school, or how about a train day at the local library, or maybe even a float for your local parades, etc.

So, how does this help Train Mountain Railroad Museum? So much of what we want to do in the future depends on the PUBLIC knowing about the hobby and where Train Mountain's place is in the food chain! As you recall we are pushing very hard to **PROMOTE** the MUSEUM functions of our park. We all know about our train hobby but the public only knows about real trains. The angle here is of course we have BOTH! If we need legislation for some issue, the PUBLIC must know what the heck we are talking about. If we are applying for a grant from a non-railroad related source, THEY have to know what the heck we are talking about. We want the public on our side, but in order to do that THEY have to know about us and our hobby.

Train Mountain Railroad Museum is incredibly unique from many stand points whether you are in the hobby or not! We need to let the PUBLIC know! We have the Snow Train, we have the world's largest private collection of cabooses, we have the last remaining rolling stock from OC&E railroad, Oh yeah, and we are in the Guinness Book of Records too! Yes, we can *promote* those things, BUT how much more powerful would the message be if the folks in Texas, or Pennsylvania, or Michigan or wherever already KNEW what the heck we were talking about! Get the picture, PLEASE PROMOTE YOUR HOBBY LOCALLY, we all gain from it, you might too!

# I Wanna Volunteer!

Come on gang, this is not rocket science! Joyce gets a call at least once a day from a well meaning member that really wants to participate, but the question they **ALWAYS** ask is I don't know what there is to do!

**HERE'S THE WAY IT WORKS**, there is a small group of locals that show up **EVERY** weekday morning around 8:30-ish, drink a little coffee, spread some bull around, but mainly we discuss the day's chores. It does change every day!. Wednesday is reserved for any jobs that can't be done by a single individual, so we can then go out as a group and get it done, whatever it is. Otherwise there are tons of single person jobs to be done.

We have **37 miles of track**, covered with pine needles, pine cones, winter branches and so forth. So far this season we have raked about **750 feet!** So far this season we have picked up **NO** piles. So far this season we have dumped **NO** pine needle cars. Joyce informs the members that call that this is how it works, soooooo, do they show up to help, not yet! It's your railroad, come and help us get it ready for the 2016 season, please!

Before ANY track adjustments or repairs can be done, **WE MUST BE ABLE TO SEE THE TRACK!** It has to be raked and picked up. The first meet is 4 days away, the second meet (Narrow Gauge) is mostly steamers! Get the picture!

So like I said gang this is not rocket science, show up, if it's 8-ish go to the kitchen in Central Station, if it's after 9 am go to the Main Office, if it's 4:30 pm, **well** . . . . .



## Greetings from Joyce at the front office:

Spring is springing on the mountain! The weather is warmer and now reaching into the sixties and seventies during the day, but still dropping into the thirties at night. Daffodils are blooming and the songs of birds are becoming more prevalent. Track and clean-up work has begun. Debra can be glimpsed here and there as she busily zips about working on the grounds and, with the longer daylight hours, volunteers are showing up earlier and staying later every day.



The latest 2016 member count (as of April 7<sup>th</sup>) is 344 and climbing. Memberships can be renewed at any time. They are good for the year they are purchased in, with the exception of those purchased between October 1<sup>st</sup> and December 31<sup>st</sup>. Memberships purchased between October 1<sup>st</sup> and December 31<sup>st</sup> are good through the end of the year they were purchased in and throughout the following year. You can renew online at [www.tmrr.org](http://www.tmrr.org) and you can also register for meets there. Those bringing trains to run at Train Mountain must be members. Membership renewals can also be done by mail, as can meet registrations. New members are always welcome. If you encounter any problems with online registration, phone the office at 541-783-3030.

If you have a chance, check out our new weather station at <https://www.wunderground.com/cgi-bin/findweather/getForecast?query=pws:KORCHILO7> where you can get up to the minute weather reports and weather forecasts for right here at Train Mountain! Seriously, it is our very own weather station (thank you, Bob Bell for donating it!) and it reports direct from Train Mountain's Central Station. You can also get there by clicking on the Train Mountain Weather box on our home page. At the box, you will find basic weather with the current temperature and wind speed. Clicking on the box and going to the link above gives much more detail, history and other interesting facts.

We always need volunteers and highly value all that our volunteers do for Train Mountain whether their projects are mentioned here in the Gazette or not. A non-member may volunteer, but should consult with the office first. All volunteers must sign a Participant Release Form before volunteering and should report their volunteer hours after volunteering. Those who volunteer regularly should turn their volunteer hours in to the office on a monthly basis.

Volunteers are always needed for track building and repair, track and yard clean-up, miscellaneous maintenance, repairs and renovations, office help, chairing committees and more.

Thank you to those who have reported their volunteer hours. Keep on sending them!.

And now for my monthly reminder: If you fuel your train at the fueling station, please fill in the fuel tag, then bring the white copy to the office and pay the same day that you got the fuel.

Happy Spring to You!

# Mutual Promoting

by Tom Watson

The third week of April, 2016, was busy for several of the Train Mountain locals whom attended the Crater Lake's Backyard (aka "The 30 Mile Club") annual meeting/gathering. This group consists of most of the business and attractions within 30 miles of Crater Lake National Park, and its most important mission is to mutually support each other. The group is also partnered with Discover Klamath.

Representatives attend major tourism functions throughout the West, e.g., Boat and Sports Shows and travel industry conventions in the Western States. Group members that supply their brochures will get them distributed at the 30 Mile Club and Discover Klamath booths, and also in many brochure racks.

Last year, the annual meeting of the 30 Mile Club was hosted by Train Mountain with dinner at Central Station and catered by the Potbelly Cafe. Some of our gracious TM Members provided train tours to these guests. TM received a good deal of positive exposure, both public and political, from hosting this meeting.

This year's, Tuesday, April 19th, meeting was an all afternoon and evening affair hosted by the Rocky Point businesses. Although Rocky Point is only 30 miles from Train Mountain, many of the attendees left Chiloquin around 1:00 pm and did not get back home until around 9:00 pm.



The itinerary had the attendees stopping at various locations during specific time periods, resulting in the group touring the Rocky Point area.

The first stop was at Crystalwood Lodge, a pet friendly place to stay that is no further than Klamath Falls from Train Mountain.



Next we visited Harriman Springs Resort & Marina, providing Restaurant & Bar / Hunting & Fishing / Campsites / RV Sites / Cabins / Boat Rentals. An elegantly restored historical site that provided the group with refreshments and a no host bar.





Dinner at the Rocky Point Resort.





Then there was desert at the historical Point Comfort Lodge.

Lodge and Cabins / Built in 1912, she is the Grand Dame of Klamath Lake, one of the last remaining great Lake Lodges of the West. The restoration took 8 years and was carefully done adhering to the guidelines required for a structure listed on the National Historic Registry.



A great time was had by all, and a lot of contacts were made and promotional material exchanged.



## Help Needed Now for 2016 Big Build

The September Big Build in 2016 will replace the existing track from Cox Bridge to Hill Top Crossing. This is the section on track that runs from Central Station to the Serpentine in front of the Colton Cement Plant. This section of aluminum on wood track will be replaced with steel on plastic track.

This is a section of double track 1,350 feet long. Therefore, the replacement work will require 2,700 feet of track or 270 pre-made track panels. We presently have about 70 track panels constructed, so we need to build 200 more before next September.

We are looking for volunteers that would like to help this winter in the track shop. You don't need any special skills. Richard will show you what needs to be done and he will pre-bend the required rails. The work is mostly loading jigs and operating powered screw guns. You don't have to work all winter. Any amount of time that you could donate would be appreciated. If you could come and work for a few days, it would be a great help.

If you have any question or if you are willing to help, please call the office at 541-783-3030 or drop us a line at [info@tmrr.org](mailto:info@tmrr.org).

Thank you.

## Visitors to Train Mountain:

Train Mountain is very popular and is continually attracting visitors from throughout the world. We announce that our hours are from 10:00 AM until 3:00 PM Monday through Friday during the summer, and 10:00 AM to 2:00 PM during the winter. The office is closed on weekends except during meets, and then only when volunteers are available to open the office.

Our insurance advisors request that all people (members and visitors) complete and sign a liability release. If **YOU** as a member encounter visitors on the property without a visitors pass please direct them to the office so that we can insure that a release has been completed and a visitors pass has been issued.

If **YOU**, as a member, open the gate and allow visitors to pass through - **YOU** are responsible to see that the release has been completed. Releases are available in the mailboxes near the office for those times the office is closed. There are also releases available in the kitchen and in the back shop.

***If you do not want to, or do not have the time to, ensure that the releases are completed*** - then please graciously explain that the train park is closed to visitors and that the open hours are normally (Winter) 10:00 AM until 2:00 PM Monday through Friday. To arrange other hours visitors should call the office at 541-783-3030.

# FIRE SEASON TRAIN MOUNTAIN 2016

By Jeff Mills

Winter is laying down its last rain and snow this late spring and warmer weather will be here soon. So it's time to renew our diligence in FIRE PREVENTION. Train Mountain had more snow this year than in the past few years. This is good as it melts slowly and soaks into the ground; raising water table levels and allowing plant life to take a long needed drink. It also means that vegetation will have a good growth spurt providing more fuel for a wildfire. The drought stricken brush and trees will shed dead foliage. This makes raking the track and drainage ditches more important than ever. Raking is our first line of defense in fire prevention when it's performed on a regular basis.

As always, smoking is not allowed out on the tracks and will only be tolerated in the designated smoking areas. These areas are on the east side of central station and the east side of the back shop. Please be watchful for people smoking in non-designated areas and either ask them to extinguish their cigarettes or report the infraction to the office.

It is the right time to check your own firefighting equipment. When you need these tools it will be too late to fix them. Inspect tool heads for sharpness and rust, check handles for cracks or loose heads and correct discovered flaws now. Fire Extinguishers need to be checked for charge and date of manufacture. If extinguishers are not charged or are 6 or more years old, they must be recharged or replaced. I will be preparing Train Mountain's Fire Gondolas for deployment during the Narrow Gauge Work Week and need a few volunteers to help with this procedure. I encourage adding one of these fire gondolas to all work trains and any other trains willing and able to do so.

I will meet with the local Fire Chief to improve our readiness for this upcoming fire season. I also have TEN STANDARD FIRE FIGHTING ORDERS printed on business cards and available to all interested members.

## **Notice to all Members**

Due to security concerns, the Gate Code for the Train Mountain Main Gate was changed after the Triennial. Any Member planning to arrive at Train Mountain when the Office is closed will need to contact the Office prior to arrival to arrange to get the new Gate Code.

## **Train Mountain is a NO SMOKING Facility**

During recent events, many Members and their Guests have been ignoring this policy. There are only three designated smoking areas at Train Mountain:

- (1) Outside the front of the Backshop
- (2) Outside the east door of the Hall of Flags
- (3) Outside the Motor Pool (Maintenance Building)

Due to the high fire danger at Train Mountain during the summer, we have zero tolerance for anyone smoking outside one of the designated areas.

**There is NO SMOKING anywhere out on the track!**

**Members, Guests, and Visitors that continue to violate the Train Mountain Smoking Policy may be asked to leave.**

**Please submit your volunteer hours. If you work off site or at home on Train Mountain projects - these hours count.**





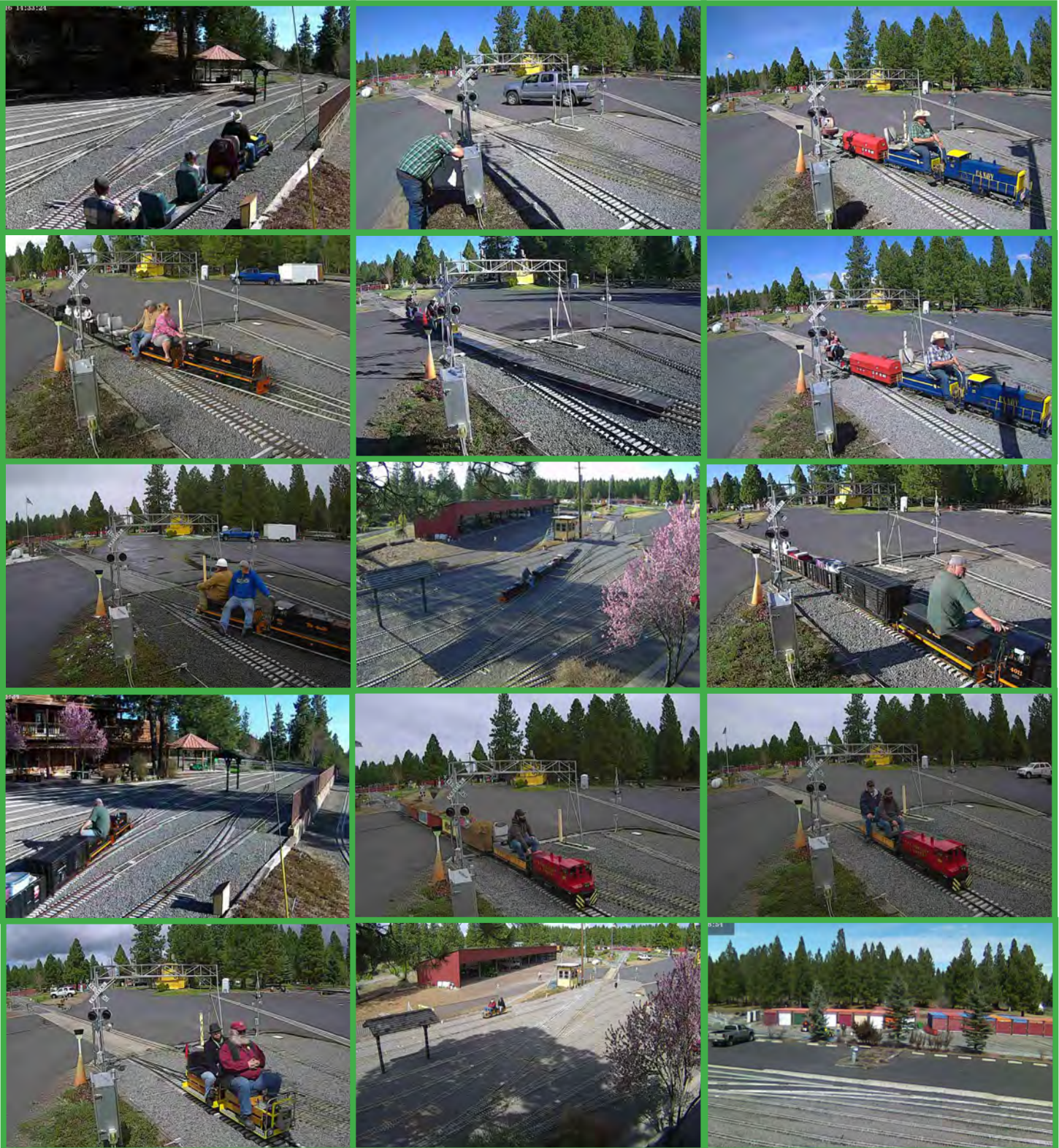
# WEB-CAM GALLERY

Photos by: The Web-Cam



# WEB-CAM GALLERY

Photos by: The Web-Cam

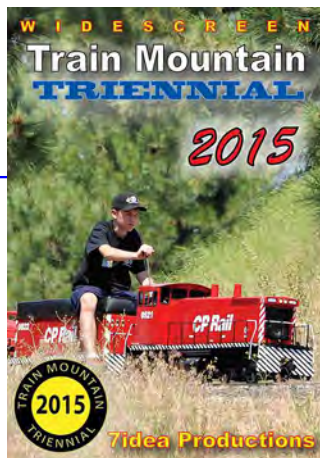


# CLASSIFIEDS



## 2015 Triennial Video is available now!

The 2015 Train Mountain Triennial video from Aaron Bentsen at 7Idea Productions is now available through the [Train Mountain on-line store](#) or the main office at Train Mountain. Give them a call at 541-783-3030 and get a copy on the way to your place. It's \$29.95 for the video and free shipping and handling lower 48, \$6 S&H for all others. A most enjoyable video shot by a true video artist and of course our favorite subject, Train Mountain!



Our good friend Jim over at Discover Live Steam has placed ads for us on his terrific website, thanks Jim. [discoverlivesteam.com](http://discoverlivesteam.com) Did you see the great article and front cover story from the November / December 2015 issue of Live Steam and Outdoor Railroading? It is a great article covering the 2015 Triennial. and the great gang of folks that hang around the place and put on terrific live steam train meets. Pretty cool! web: [livesteam.net](http://livesteam.net)



**Donations\$ Needed!**

### HAVE SOMETHING YOU WANT TO SELL?

Place an ad in the Gazette!  
 1/8 Page: \$25/month or \$250/year  
 1/4 Page: \$40/month or \$400/year  
 1/2 Page: \$70/month or \$700/year  
 Full Page: \$125/month or \$1250/year

Published by Train Mountain Railroad  
 P.O. Box 438  
 Chiloquin, OR 97624  
 Email: [info@tmrr.org](mailto:info@tmrr.org) Phone: 541-783-3030

Contributors: TMRR BOD, Friends, TMI  
 Photos: Tom Watson



From the 1930s to the 1950s, the Super Chief was Santa Fe's premiere all room Pullman sleeping car train that ran daily from Chicago to Los Angeles.

Now you can relive the splendor and excitement of a Past Era as you travel in style and comfort aboard two of the Santa Fe Super Chief's historic railcars.



**"The Acoma"**

Relax with family and friends in Elegant Style as you unwind riding the rails on the "Acoma" lounge car to your destination.

Each night, you will sleep in classic comfort aboard the accommodations of the "Palm Leaf" sleeper car.

For more information please contact:

Ron Ashcraft (505) 220-3780 or Mike Mulder (209) 648-2485 or visit our website at [www.pswra.com](http://www.pswra.com)



**"The Palm Leaf"**



Pacific & Southwest Rail Adventures



**Comfortable Seats and Easy Riding, Wonderful Food and Excellent Service  
A Memorable Experience on This Extraordinary Train**



Located only 1.5 miles off Hwy 97 in Downtown Chiloquin in the same building as the Post Office  
212 1st Avenue, Chiloquin, OREGON 97624 -- Phone: (541) 783-0988





## Kla-Mo-Ya Casino

34333 Hwy 97 N  
Chiloquin, OR 97624  
541-783-7529 or 1-888-KLAMOYA  
[www.klamoyacasino.com](http://www.klamoyacasino.com)

Kla-Mo-Ya Casino opened in 1997 and is owned and operated by the Klamath, Modoc and Yahooskin Tribes. Set in the beautiful pines of Southern Oregon, we are located on Highway 97 near the junction of Highway 62 (Crater Lake Highway).

We are open 24 hours a day, 365 days a year, and welcome travelers and groups from across the country year round.

Our Peak to Peak Restaurant is open 24 hours a day, with a full service lounge and beverage service available out on the gaming floor. Choose from great menu items like juicy steaks, classic salads and pastas, or try our beefy Triple 7 Burger if you are *really* hungry. Dine in or take out, we have a host of friendly staff to serve you. Check out our current menu from the Dining page of our website, and watch for monthly special features. The Peak to Peak restaurant welcomes groups, meetings or parties for special occasions.

Open from 7am to 9pm, the Espresso Bar serves a wide variety of espresso and coffee drinks, hot or cold, as well as fruit smoothies, frozen yogurt, desserts, and quick to-go lunches.

Our gaming floor has 344 slots with new games and themes being brought in all the time. Find out about our current slot promotions and check out recent jackpot winners on our website and Facebook page.

Try your hand at one of our four Blackjack tables. We offer double deck and six-deck blackjack with \$3 tables available every Monday. Keep up with promotions and tournaments available by checking our website.

Hours of operation:

Weds & Thurs: 12 noon – 8pm

Friday through Sunday: 12  
Noon – 12 Midnight

(closing times may vary depending on play)

Stop by the Bonus Club to sign up for a free membership card to earn rewards and qualify for our many promotions and giveaways. While you are there, browse through the unique selection of items in our Gift Shop.

RVers, Truckers and large vehicles are always welcome, with plenty of free overnight parking available. Stop by the Bonus Club to ask about discounts and perks.

Come enjoy the warmth and excitement of Kla-Mo-Ya casino.



## Crater Lake Junction Travel Center

34005 Hwy 97 N  
Chiloquin, OR 97624  
541-783-9800

The Crater Lake Junction Travel Center opened for business in 2010, and is owned by the Klamath, Modoc and Ya-hooskin Tribes. Open 24 hours a day and located just next door to Kla-Mo-Ya Casino as you enter, this travel center offers competitive fuel prices and many convenience items.

Travelers can fuel up with gas, diesel, or propane. Stop in for a snack or soda, or grab a quick meal featuring Mexi-Go or Mountain Fresh Pizza. Free Wi-Fi, a comfortable lounge with large screen TVs, laundry and shower facilities, and ATMs are all available.

Make sure to ask for a Crater Lake Junction Travel Center rewards membership card so that you can earn points for each purchase and visit. Your earned points can be applied toward future purchases.

Truckers, ask about trucker services and benefits for each visit. Convenience items and truck accessories are for sale, along with many useful daily provisions.

### Crater Lake National Park

Crater Lake National Park is located off Highway 62, just 34 miles from Kla-Mo-Ya Casino and the Crater Lake Junction Travel Center. After playing and fueling up, discover the world-famous beauty and amazing history of Crater Lake. Groups and parties, ask about casino shuttle service for your outing or adventure.

### Shuttle Service to and from Train Mountain

Kla-Mo-Ya Casino and the Crater Lake Junction Travel Center are also offering a free shuttle service for Train Mountain Members, Guests and Visitors.

Train Mountain people should see the TM Office for more details, schedules, and special events.