



The Mountain GAZETTE

© Copyright 2016, Train Mountain Railroad

An Official Publication of the Train Mountain Railroad - Issue: Vol. #3 Issue #38 - **September** 2016

The Big Build Meet

began with Carl and Marg's Garden Party on Sunday afternoon. The party was attended by a record number of members, and all had a wonderful time. Thank you Carl and Marg.

Many projects were tackled during the week. The main project of reinstalling the track from the 2% switch up through Colton took a little longer than the normal work week, but it is now back in. There is still some ballasting to be completed, but we may need to order a little more ballast to finish the job.

The Kludts and Wolf's continued their work on the scale model buildings and surrounding landscaping. Other members continued to build track panels at the Track Shop, and the pine needle cars never stopped running in the continuing effort to clear the track right-of-ways of flammable debris.

The TMRR Board of Directors met on Thursday afternoon. Most of the discussion concerned the need to fill recently vacated Board positions and organizing the election. Jeff Mills was railroaded into heading the nomination committee. Please see his announcement on page 2.

The second topic discussed that required action was that of setting rates for 2017. The Board voted unanimously to raise the Individual and Family Membership rates by \$10. Beginning with 2017 Individual Membership will now cost \$60/ year, while the Family Membership will now cost \$85/ year. All other memberships, including the premium memberships will remain the same.

The Meet Fees for 2017 will not change.

WANTED

**Nominations from Current Members
of Train mountain railroad to Fill
3 Board of directors positions:**

Director at Large (2), Treasurer (1)

**Nominees Must be willing to:
be a “working” board member,
Take on Necessary Projects and Tasks
For the good of Train Mountain RailRoad,
And Fulfill a Three Year Term.**

**If interested, please contact the
nominating Committee Chair Person**

Jeff Mills jhmills51@hotmail.com or 253-719-7530

ELECTION NOTICE

Please take notice that elections for Board Of Director positions will take place no sooner than two weeks from the date of this notice, September 20, 2016, and will be completed no later than October 31, 2016.

Persons wishing to have their names considered for nomination MUST Submit their names to Jeff Mills (see page 2 above) NO LATER than October 1, 2016.

**As set forth in the TMRR Bylaws,
voting will take place by email ballots.**

To participate in the election, Members must have a valid email address on file, or contact Joyce, the Office Administrator, to make special arrangements.

Train Mountain EMAIL

Please use info@trainmtn.org as the primary Train Mountain email contact. You may use info@tmrr.org as a back-up.

Gazette EMAIL Notice

DOES NOT ALWAYS WORK

Before the email notices ever go out, the Gazette is always published on the Train Mountain website.

<http://trainmtn.org/tmrr/pages/gazette/gazette.shtml>

Train Mountain Brush Clearing Fundraiser We're Almost There!

Many of you have had the distinct pleasure of cutting brush at Train Mountain. Or you have that same good faire at your own homestead. We ALL know what a giant PAIN it is to do. We have been looking at forest mulching options for some time. Forest mulching is the art of cutting brush via some kind of machinery. Now we are not talking about a weed wacker, what we are talking about is some sort of 'tractor' born machinery that would allow us to maintain our 2,200 acres without killing our staff or volunteers.

We believe we may have found the answer. It is called a Peco Brush Blazer.



We have 'Matching Fund' donor to help purchase this machine. The total cost delivered is \$14,000, so our share is \$7,000.

We're almost there. As of this writing, tmrr has raised \$6232, or 89% of our share. Please donate whatever you can afford. No amount is too small.

Please help support this fund raiser and either use the donate button, or send your check for any amount to:

**Train Mountain
%Brush Blazer
PO Box 438
Chiloquin, OR 97624**



There are many videos of this machine in action on Youtube, but disregard the couple that show the operator 'riding' on the machine. That is extremely dangerous, so we will use it in the standard WALK behind mode. It is self-propelled, and operates like a zero turn lawn mower. It uses a 28 hp Kohler Fuel Injected engine, hydra-static drives and the tracks are eco friendly to the forest floor so little if any repair is required to the land when done. Please watch some of these videos and if you think this is a good plan, please send in your check to help us get this terrific device.

For those that think our brush might be too tough, check out the cinder block, gray dust, then pea gravel!

<https://www.youtube.com/watch?v=fdaSirzTpcl>

<https://www.youtube.com/watch?v=137eG27Z-jl>

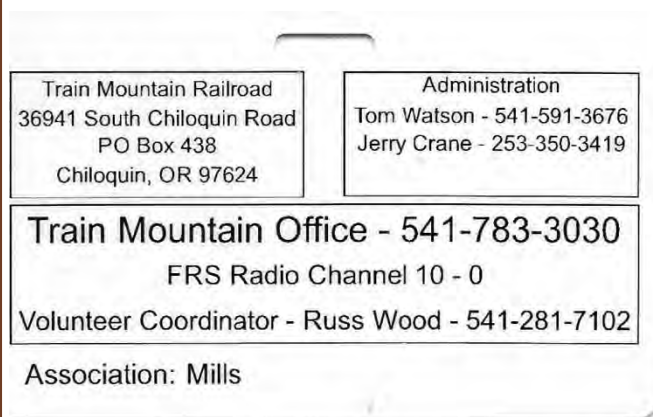
<https://www.youtube.com/watch?v=xScgp0hZIQ8>

Why is your Meet Name Badge important?

By Jeff Mills

Obviously, they identify you as being registered for the current meet. It has your name and home town on it. Further, it shows if you are member or a guest of a member. But it contains much more!

At the last board meeting we were amazed by the number of attending members present who never looked at the back of their name badges. On the reverse side is found some critical information in case of an emergency.



Train Mountain's physical address is in the upper left box. Next, in the right box, is Tom Watson's and Jerry Crane's cell numbers. They are President of Train Mountain Railroad and President of Train Mountain Institute respectively. Dropping down to the middle box is the phone number of the Train Mountain office, the FRS channel for your required radio as well as the cell number of Russ Wood, Volunteer Coordinator.

Please take the time to look at the back of your badge and add at least the Train Mountain office phone number to your cellphone directory, if you have not done so already.

End of the Season?

The last of this year's work weeks are over, or are they? The Australian track gang has left for home. The Idaho bunch has done the same. Even most of the Washatonians have left the park. BUT still there are folks out working on the railroad.

What a great fun season we had this year. So many projects got done and everyone seemed to enjoy doing them.

I wish to thank everyone who came and helped wherever they could. We had store helpers, office helpers, rakers, picker uppers, ballast shovelers, tour train operators and conductors, weed eradicators, and all sorts of help. Thank you all.

Positions and Committees

I am always asked who to see about this or that. Well believe it or not we do have some committees and some of these even have a chairperson! As of this past summer I think the following list is pretty accurate. If you need to make contact, their contact info is on the club website under the heading of club roster.

POSITIONS

President TMIInst	Jerry Crane (The property owner representative) (In charge of all Train Mountain Facilities)
President TMRR	Tom Watson (Elected Position) (Manages On-Site Day-to-Day Operations at Train Mountain, which includes the Company Store)
Office Administrator	Joyce Merwin (Employee)

Committees

Volunteer Coordinator	Russ Wood
Backshop	-open-
Cameras	Dale Furseth, Tom Watson
Carpentry Shop	Bill and Joyce Kludt
Containerville	Chuck Barnes
Facilities	Jerry Crane
Fire Safety	Jeff Mills
Forestry	Jeff Pape
Fundraising	Pam Williams

Gazette	Tom Watson (temporarily, looking for assistance)
Signaling	John Cooper
Social Media	Chris Donhost
Track Superintendent	Dennis Ward
Track Maintenance	Dennis Ward, Charlie Bill Schubert
Track Shop	Richard Cox
Webmasters	Tom Watson, Dale Furseth

Use of the BackShop

One of the perks of being a member of Train Mountain is that you have 'access' to the BackShop. The stated purpose of the BackShop is to maintain TRAIN MOUNTAIN equipment. If you are a member and are on campus and you have some mechanical issues with your equipment, you are able to take it to the BackShop and do the necessary repairs. It is NOT a club house facility where you can bring a kit from home and spend the summer building the kit in the BackShop. It is for repairs. The main work area has three elevated tracks, numbers 18,19 and 20. 18 is very important and is used quite a bit. Please keep it clear at all times. 19 and 20 should be the tracks you use to make your repairs on. You can use either end of the tracks but always check to see what other projects are going on, on those tracks. It is a SHARED resource. BTW at the end of this past work week with a lot of members using the BackShop for said repairs, we took in exactly \$2 in the BackShop donation box. We can't keep it stocked with rattle cans, oil, nuts, bolts, wire ties, and tools on \$2. Remember it is a SHARED resource.

Train Mountain Riding Cars

Train Mountain owns both two seater riding cars and three seater riding cars. The two seaters are available to members on a first come first served basis WHEN NOT BEING USED BY TM. There are some rules that MUST be followed. First they are available only for THE RIDE AT HAND, not for the WHOLE DAY or the WHOLE MEET. Pick up the cars you need FOR THE RIDE. At the end of the RIDE return them to the BackShop, DO NOT LEAVE them in the yard, put them away.

At times, TM will keep some two seat riding cars in front of Central Station. These may only be used with express permission from the Office.

The use of our two seaters is another of our SHARED resources. This means if you do use TM two seaters but don't have enough bodies to fill them in your group, you agree to stop by the office and see Joyce, she may be able to supply some passengers!

The three seaters are for Rail Tours only. If you would like to receive training on being a museum docent and give rail tours see me, Russ Wood.

Second Row of Storage Containers Coming Soon

Our plan at Train Mountain is to have the second row of storage containers ready for use this year. The transfer/lift table between the two rows of containers has been installed and is ready to be used. The concrete foundation for the second row of containers at the end next to the transfer table has been installed. Only the foundation pads at the back of the containers remain to be poured. We are now purchasing the containers from a Portland firm and an arrangement has been made for delivery to Train Mountain.

We are now accepting orders for the containers. Nine of the new containers have been sold. There are only thirteen left. The cost for an installed container with roll up door is \$5,000. A down payment of \$2,500 is required to secure your order. When your down payment has been received you can chose the spot in the row where you would like to be located. The locations will be on a first come first served bases. The roll up door is installed at the end of the container opposite the cargo doors. The containers will be installed with the roll up door toward the transfer/lift table.

When you purchase a storage container, you will own it. You will be required to pay Train Mountain a yearly lease for your location and access to no additional cost electricity. The 2015 cost for this lease was \$375. You can sell your container and lease at any time, but the container cannot be removed. There are other restrictions on how the container can be used. A copy of the lease agreement can be requested from the office.

Greetings from Joyce at the front office:

We just wrapped up the Big Build. What a great meet! There were lots of people, lots of trains and lots of activity. The work week was **very** productive. Some came before and some stayed longer to volunteer lots and to play some more. It was such a pleasure to have our friends from Australia here!

Our nights and mornings have gotten pretty chilly with temperatures into the high 20's and low 30's, but the days are still warm and pleasant in the 70's and low 80's. Fall is imminent.



A big thank you goes to Janis Stiles, Susan Moore and Pat Phillips, who helped me out in the office at different times this year. You helped a lot and I really appreciate everything you did here.

Russ Wood, Bob & Pat Wolf, Bill & Joyce Kludt and a few others gave visitor train tours this past month. The visitors love the tours and are coming back into the office just totally astonished.

2016 Membership is very near 600, give or take a small few.

The 2017 Memberships will be available starting October 1, 2016. To assist Train Mountain in general, the 2017 rates are increasing slightly for Individual and Family memberships. For 2017 they will be \$60 for an Individual membership and \$85 for a Family membership. Rates for other levels of membership will remain the same as 2016. Meet fees will remain the same

Brush Blazer donations are at \$6,002 at this writing. We are past 87% of the \$7,000 needed with just \$998 left to go! Contributions toward this matching fund donation are most welcome. We are close to the goal now, so please help to finish this up in whatever amount you can donate. There is a "Donate" button on the Train Mountain Railroad home page or you can donate by phone, 541-783-3030, in person at the office, or by mail: Train Mountain Institute, PO Box 438, Chiloquin, OR 97624.

I am looking forward to seeing those of you who are coming for the Fall Colors meet. To those who have told me they won't be back again until next year, we look forward to seeing you then!

Joyce

P.S. Last month I mentioned the new website and that we would have new e-mail addresses:

Our new website is www.trainmtn.org . New e-mail addresses are joyce@trainmtn.org to reach me directly, and info@trainmtn.org for all other Train Mountain e-mail correspondence.

We have been experiencing some problems with our bulk mail system and did not send e-mails with a link to the August Gazette. **The following is a link to *The Mountain Gazette* aka "Gazette" where current and past issues are available with direct access: <http://trainmtn.org/trainmtn/pages/gazette/gazette.shtml>**

HIGH FIRE DANGER

The fire danger in Southern Oregon and at Train Mountain has been lowered to **HIGH**. The IFPL (Industrial Fire Protection Level) is now at 2.

All outdoor burning is still prohibited. Fire tools, watchman service, and a water supply are still required on forest operations that require a Permit to Operate Power-Driven Machinery.

Train Mountain does not enforce these rules, it is the local forestry officials whom are enforcing these requirements, and the fines for non compliance are substantial. For more info see: <http://scofmp.org/lifc.shtml>

From the SCOFMP website:

The South Central Oregon Fire Management Partnership is an interagency fire management program that provides comprehensive wildland fire service to south central Oregon and northwest Nevada.

Use of motor vehicles, including motorcycles and all-terrain vehicles is prohibited, except on improved roads. Possession of a shovel at least 26 inches long and a 2.5lb fire extinguisher or larger or filled gallon water container is required while traveling in a motorized vehicle, except on state and county roads.

The Train Mountain ballasted track right of way is considered “improved roads” providing it has been cleared of flammable material. It is for this reason we spend so much time and effort in raking and removing pine needles from our right of way.

Only some of our service roads can be considered “improved roads” for fire purposes. Thus while the fire danger is at HIGH, all Train Mountain Service Roads will be closed to all personal vehicles that do not have official business and have received prior approval from the Office.

For Train Mountain Members only, the main paved road to Blue Caboose, K&W, and to Katy Lane, and Katy Lane itself are “improved roads” that may be used by Members only (NOT VISITORS), providing the vehicle used is carrying the above listed required fire tools.

Notice to all Members

Due to security concerns, the Gate Code for the Train Mountain Main Gate was changed after the Triennial. Any Member planning to arrive at Train Mountain when the Office is closed will need to contact the Office prior to arrival to arrange to get the new Gate Code.

Train Mountain is a NO SMOKING Facility

During recent events, many Members and their Guests have been ignoring this policy. There are only three designated smoking areas at Train Mountain:

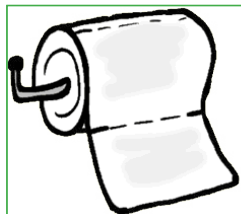
- (1) Outside the front of the Backshop
- (2) Outside the east door of the Hall of Flags
- (3) Outside the Motor Pool (Maintenance Building)

Due to the high fire danger at Train Mountain during the summer, we have zero tolerance for anyone smoking outside one of the designated areas.

There is NO SMOKING anywhere out on the track!

Members, Guests, and Visitors that continue to violate the Train Mountain Smoking Policy may be asked to leave.

Please submit your volunteer hours. If you work off site or at home on Train Mountain projects - these hours count.



REMEMBER: No job is complete without the paperwork!

Visitors to Train Mountain:

Train Mountain is very popular and is continually attracting visitors from throughout the world. We announce that our hours are from 10:00 AM until 3:00 PM Monday through Friday during the summer, and 10:00 AM to 2:00 PM during the winter. The office is closed on weekends except during meets, and then only when volunteers are available to open the office.

Our insurance advisors request that all people (members and visitors) complete and sign a liability release. If **YOU** as a member encounter visitors on the property without a visitors pass please direct them to the office so that we can insure that a release has been completed and a visitors pass has been issued.

If **YOU**, as a member, open the gate and allow visitors to pass through - **YOU** are responsible to see that the release has been completed, and **YOU** are liable for them until they sign a release. Releases are available in the mailboxes near the office for those times the office is closed. There are also releases available in the kitchen and in the back shop.

If you do not want to, or do not have the time to, ensure that the releases are completed - then please graciously explain that the train park is closed to visitors and that the open hours are normally (Winter - 10:00 AM until 2:00 PM)(Summer - 9:00 AM until 3:00 PM) Monday through Friday. To arrange other hours visitors should call the office at 541-783-3030.

PUBLICATION DEADLINE CHANGING: Submissions to the Gazette must be received by the 15th of the month of publication.

The tenth of the month is to be the last day to submit material. Material received after the 15th of the month may be held until the following month or rejected.

SUBMISSION CRITERIA

Article and ads may be submitted via a pdf file, MS WORD, Open Office, or similar text file.

Please use a common open source FONT such as ARIAL that can be displayed in all Browsers, and is easy to read. Please do NOT use the Calibri font, as we must take the time to convert it to Arial.

If your document has an embedded image, you must also include the image separately as a jpg, png, or similar image file.

WEB-CAM GALLERY

Photos by: The Web-Cam



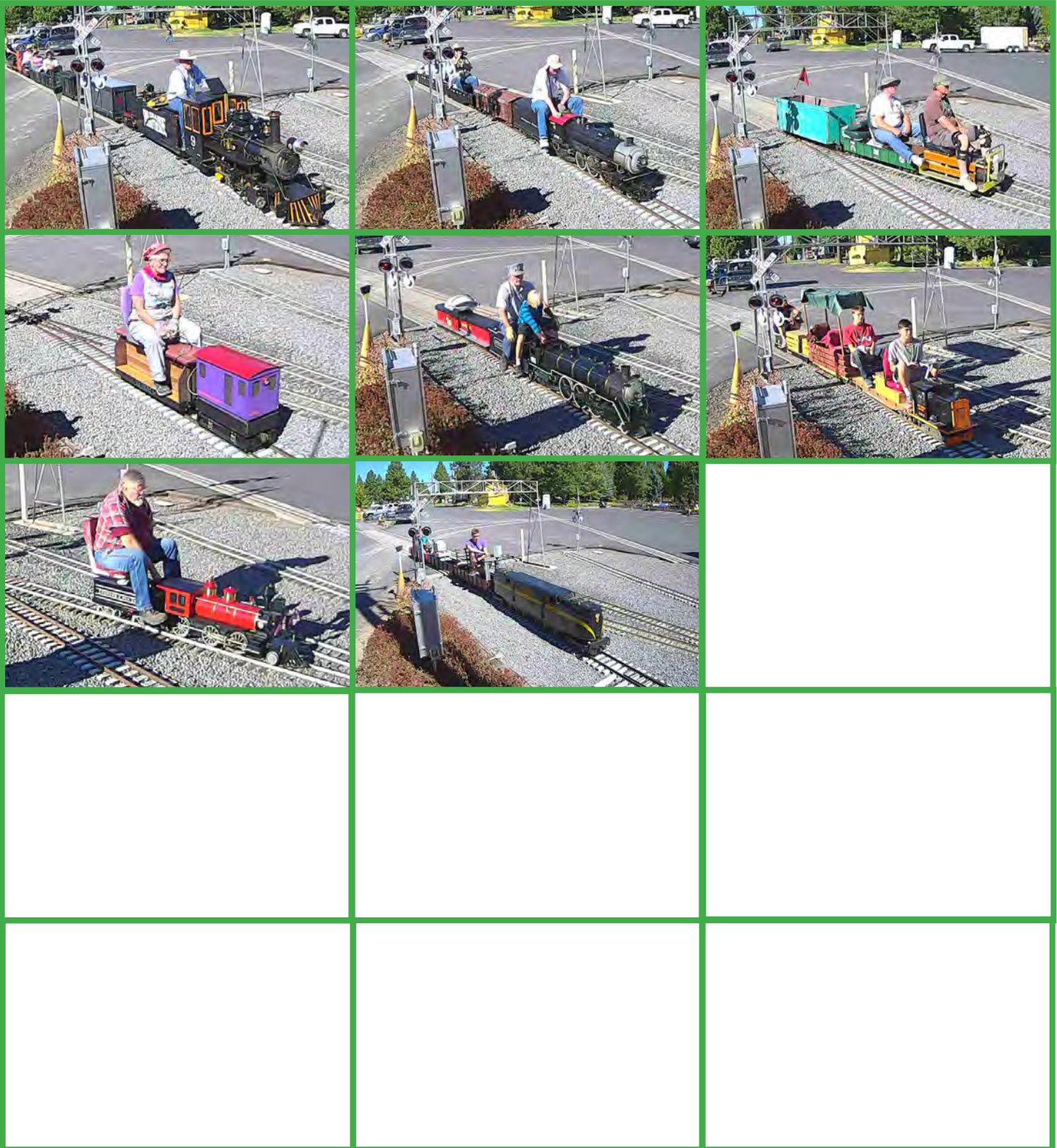
WEB-CAM GALLERY

Photos by: The Web-Cam



WEB-CAM GALLERY

Photos by: The Web-Cam

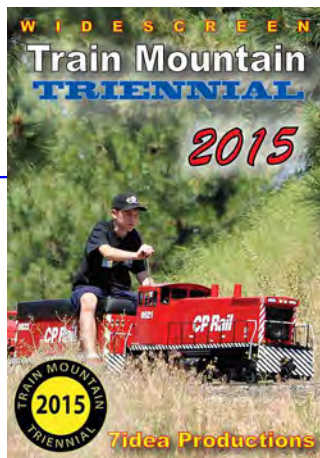


CLASSIFIEDS



2015 Triennial Video is available now!

The 2015 Train Mountain Triennial video from Aaron Bentsen at 7Idea Productions is now available through the [Train Mountain on-line store](#) or the main office at Train Mountain. Give them a call at 541-783-3030 and get a copy on the way to your place. It's \$29.95 for the video and free shipping and handling lower 48, \$6 S&H for all others. A most enjoyable video shot by a true video artist and of course our favorite subject, Train Mountain!



Our good friend Jim over at Discover Live Steam has placed ads for us on his terrific website, thanks Jim. discoverlivesteam.com

Did you see the great article and front cover story from the November / December 2015 issue of Live Steam and Outdoor Railroading? It is a great article covering the 2015 Triennial. and the great gang of folks that hang around the place and put on terrific live steam train meets. Pretty cool! [web: livesteam.net](http://web:livesteam.net)



Donations\$ Needed!

HAVE SOMETHING YOU WANT TO SELL?

Place an ad in the Gazette!
 1/8 Page: \$25/month or \$250/year
 1/4 Page: \$40/month or \$400/year
 1/2 Page: \$70/month or \$700/year
 Full Page: \$125/month or \$1250/year

Published by Train Mountain Railroad
 P.O. Box 438
 Chiloquin, OR 97624
 Email: info@tmrr.org Phone: 541-783-3030

Contributors: TMRR BOD, Friends, TMI
 Photos: Tom Watson





Located only 1.5 miles off Hwy 97 in Downtown Chiloquin in the same building as the Post Office
212 1st Avenue, Chiloquin, OREGON 97624 -- Phone: (541) 783-0988



What is Amazon Smile?

In a nutshell, it is a way for Train Mountain to receive 501c3 donations from Amazon.

According to Amazon: AmazonSmile is a simple and automatic way for you to support your favorite charitable organization every time you shop, at no cost to you. When you shop at smile.amazon.com, you'll find the exact same low prices, vast selection and convenient shopping experience as Amazon.com, with the added bonus that Amazon will donate a portion of the purchase price to your favorite charitable organization. You can choose from nearly one million organizations to support.

When you go to Amazon Smile, choose Train Mountain Institute as your charity. In order for this to work, you must always start from Amazon Smile. Then all else is the same, your account, wish lists, etc.

The AmazonSmile Foundation will donate 0.5% of the purchase price from your eligible AmazonSmile purchases. I found that just about everything I purchased lately is eligible.

If we can get a large number of Train Mountain supporters to take advantage of the Amazon Smile program, this could result in sizable donations to Train Mountain.

[Click here for more information.](#)



Kla-Mo-Ya Casino

34333 Hwy 97 N
Chiloquin, OR 97624
541-783-7529 or 1-888-KLAMOYA
www.klamoyacasino.com

Kla-Mo-Ya Casino opened in 1997 and is owned and operated by the Klamath, Modoc and Yahooskin Tribes. Set in the beautiful pines of Southern Oregon, we are located on Highway 97 near the junction of Highway 62 (Crater Lake Highway).

We are open 24 hours a day, 365 days a year, and welcome travelers and groups from across the country year round.

Our Peak to Peak Restaurant is open 24 hours a day, with a full service lounge and beverage service available out on the gaming floor. Choose from great menu items like juicy steaks, classic salads and pastas, or try our beefy Triple 7 Burger if you are *really* hungry. Dine in or take out, we have a host of friendly staff to serve you. Check out our current menu from the Dining page of our website, and watch for monthly special features. The Peak to Peak restaurant welcomes groups, meetings or parties for special occasions.

Open from 7am to 9pm, the Espresso Bar serves a wide variety of espresso and coffee drinks, hot or cold, as well as fruit smoothies, frozen yogurt, desserts, and quick to-go lunches.

Our gaming floor has 344 slots with new games and themes being brought in all the time. Find out about our current slot promotions and check out recent jackpot winners on our website and Facebook page.

Try your hand at one of our four Blackjack tables. We offer double deck and six-deck blackjack with \$3 tables available every Monday. Keep up with promotions and tournaments available by checking our website.

Hours of operation:

Weds & Thurs: 12 noon – 8pm

Friday through Sunday: 12
Noon – 12 Midnight

(closing times may vary depending on play)

Stop by the Bonus Club to sign up for a free membership card to earn rewards and qualify for our many promotions and giveaways. While you are there, browse through the unique selection of items in our Gift Shop.

RVers, Truckers and large vehicles are always welcome, with plenty of free overnight parking available. Stop by the Bonus Club to ask about discounts and perks.

Come enjoy the warmth and excitement of Kla-Mo-Ya casino.



Crater Lake Junction Travel Center

34005 Hwy 97 N
Chiloquin, OR 97624
541-783-9800

The Crater Lake Junction Travel Center opened for business in 2010, and is owned by the Klamath, Modoc and Ya-hooskin Tribes. Open 24 hours a day and located just next door to Kla-Mo-Ya Casino as you enter, this travel center offers competitive fuel prices and many convenience items.

Travelers can fuel up with gas, diesel, or propane. Stop in for a snack or soda, or grab a quick meal featuring Mexi-Go or Mountain Fresh Pizza. Free Wi-Fi, a comfortable lounge with large screen TVs, laundry and shower facilities, and ATMs are all available.

Make sure to ask for a Crater Lake Junction Travel Center rewards membership card so that you can earn points for each purchase and visit. Your earned points can be applied toward future purchases.

Truckers, ask about trucker services and benefits for each visit. Convenience items and truck accessories are for sale, along with many useful daily provisions.

Crater Lake National Park

Crater Lake National Park is located off Highway 62, just 34 miles from Kla-Mo-Ya Casino and the Crater Lake Junction Travel Center. After playing and fueling up, discover the world-famous beauty and amazing history of Crater Lake. Groups and parties, ask about casino shuttle service for your outing or adventure.

Shuttle Service to and from Train Mountain

Kla-Mo-Ya Casino and the Crater Lake Junction Travel Center are also offering a free shuttle service for Train Mountain Members, Guests and Visitors.

Train Mountain people should see the TM Office for more details, schedules, and special events.