



The Mountain GAZETTE

© Copyright 2016, Train Mountain Railroad

An Official Publication of the Train Mountain Railroad - Issue: Vol. #3 Issue #39 - **October** 2016

The Fall Colors Meet



The Fall Colors Meet had a great turn out, with a large number of steamers. The colors were at their peak in some locations. Those in attendance had a great time.

October 27, 2016 Report

Train Mountain Railroad 2016 Board of Directors Election

3 Positions are open on the TMRR Board.

The following people ran for election:

Dick Peterson

Russ Wood

Joe Simon

David Waterstreet

Bill Dwyer withdrew from the election before the ballots were sent out and before voting started.

Email ballots were to be submitted no later than midnight October 24, 2016. Mail-in ballots were to have been postmarked by October 20, 2016. We allowed until October 27, 2016 1:00PM for any mail-in ballots to arrive.

Following are the statistics and vote counts on the 2016 BOD election:

311 email ballots were sent to individuals and families with an email address on file.

10 ballots were mailed out to individuals or families for whom we have no email address.

77 people voted. They were from 61 households; 16 of those with two eligible voters. 19.6% of the households voted. This % includes a count of 61 primary members and 16 secondary family members. If they indicated that they were not voting or that they were only voting for one or two candidates, their no votes were counted as no votes—three if they said they were not voting at all, one no vote if they only voted for two candidates, two no votes if they only voted for one candidate. Most voted for three candidates.

77 responses x 3 votes per eligible voter = 231 votes total

The election results are as follows:

Dick Peterson **69 votes**

David Waterstreet **51 votes**

Joe Simon **49 votes**

Russ Wood 44 votes

No Votes 18 votes

Total 231 votes

Information submitted by Joyce Merwin October 27, 2016 1:55PM

The TMRR Board welcomes its new members, Dick Peterson, Dave Waterstreet and Joe Simon. A BOD meeting will be held in November to elect a Board Officer to the vacant Treasurers position, and discuss adding a Vice President.

We wish to thank everyone that donated to the Brush Blazer fund raising campaign. We successfully raised enough money to make the purchase notwithstanding the fact that there was a price increase as a newer model became available. The delivery of our new latest model Brush Blazer is expected on or about November 2, 2016.

This will be a smaller Gazette than normal because no other articles were submitted for publication.

Train Mountain EMAIL

Please use info@trainmtn.org as the primary Train Mountain email contact. You may use info@tmrr.org as a back-up.

Gazette EMAIL Notice

DOES NOT ALWAYS WORK

Before the email notices ever go out, the Gazette is always published on the Train Mountain website.

<http://trainmtn.org/tmrr/pages/gazette/gazette.shtml>

Forestry at Train Mountain - by Jeff Pape

As the board member who coordinates our forest management I invite all members to participate in working in the woods. If we share the work it will not be too much for any single member.

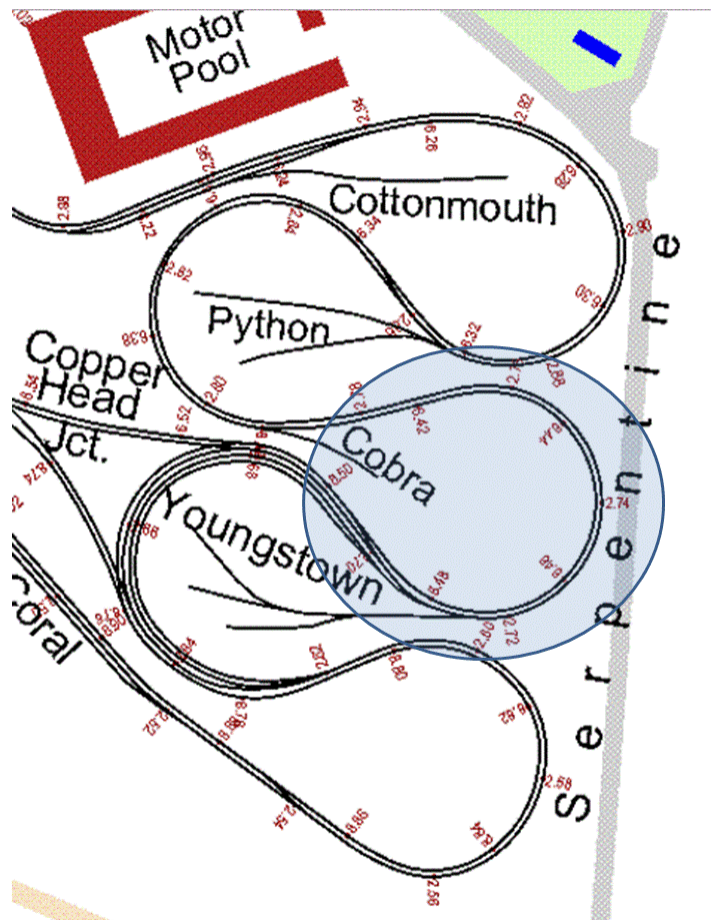
I suggest the adoption of a couple of terms to allow efficient and clear communication. Tom Watson refers to the very young pines that seem to sprout everywhere as Pine Weeds. The meaning is clear. I suggest calling the flammable brush that grows among the trees Gasoline Bush. There are several species of plant represented but all are not wanted and all present serious fire hazards due to the amount of very flammable fuel they contain.

The first time I visited TM I was very impressed watching trains weave back and forth as they went up and down the Serpentine. There was no brush and there were no little trees. A clear vista allowed one to watch several trains go up and down at the same time. It is a view that I do not think can be matched by any other club, if we maintain it.

Our first effort should be to clean up the area between Youngstown and Coral inside the lowest loop of the Serpentine. You are invited to remove pine weeds and gasoline brush inside the loop. There may be decorative plants discovered in the process. Those should be left alone. There are about twenty mature Ponderosa Pines in the area to be left alone. Once this long neglected area is done we can work our way North through the entire Serpentine. Dispose of the cut material in the burn pit.

Adopting a tree marking system. For now I have white ribbon and red ribbon. White means leave it and red means remove it. Red will generally only be used on large trees. I am investigating the paint system used by professional foresters and it may be adopted in the future.

As always work safely and be fire conscious.



Greetings from Joyce at the front office:

Following a lovely summer of blue and often cloudless skies the yellows, greens, oranges and reds of autumn have arrived along with shades of gray. The gray is bringing with it much needed rain, and while it has been hiding that lovely blue sky for weeks, it is helping some of the local vegetation turn from a very dried out brown to a lively green again.

Things have quieted down a lot since the end of the lively 2016 meet season and the end of the summer tourist season, but now the Fall tourists are here. If I hadn't mentioned this before, we do get tourists all year long and, yes, even in some of the snowiest coldest parts of winter they are still willing to explore as much as they can and they still express their desires to tour on running trains.

The horse race for the election of three new Train Mountain Railroad board members has ended and the results are in! You will find these announced in a separate article.

We recently ordered 30 year pins for the 2017 year. For those who don't know what the year pins signify, the number on the pin is the number of years Train Mountain has been in existence. Since Train Mountain started in 1987, its 30th year is 2017. A year pin for each adult member is sent with your membership packet after you join or renew. If you have gotten a 2017 membership, your packet will be sent after the pins arrive at Train Mountain.

Last month we made and surpassed the \$7,000 donation goal for the PECO Brush Blazer! This has been combined with the matching \$7,000 donation from Carl and we are now awaiting delivery of the machine! It is in transport and is expected to arrive on or about November 2nd. Thank you to everyone who contributed!

Thank you! Thank you! Thank you! To everyone who volunteered for the Department of Health Services Child Welfare Foster Care Program event held at Train Mountain Railroad Museum. Their staff, guardians, parents and children really enjoyed their event and loved getting out on the trains!

It might be a bit early to say this, but I can't wait until next year when you all come back for the meets and summer fun! Remember, if you are a member, you have year-round access to Train Mountain Railroad and you don't have to wait for a work week or meet to come — you can visit or volunteer any time of the year. The only contingency is that during a work week or during a special event, there may be some restrictions on the time of day you can run your train. If there is a special event, there may also be some restrictions on where you can camp — and we might really need for you to volunteer, so you might get asked to help out, too! If you are planning on coming, just call ahead to see if anything is scheduled and how it might affect your plans.

Happy Halloween and Happy Thanksgiving!

Joyce,

October 28, 2016

P.S. Current and past issues of *The Mountain Gazette* aka "*Gazette*" can be accessed at the following link: <http://trainmtn.org/trainmtn/pages/gazette/gazette.shtml>



Notice to all Members

Due to security concerns, the Gate Code for the Train Mountain Main Gate was changed after the Triennial. Any Member planning to arrive at Train Mountain when the Office is closed will need to contact the Office prior to arrival to arrange to get the new Gate Code.

Train Mountain is a NO SMOKING Facility

During recent events, many Members and their Guests have been ignoring this policy. There are only three designated smoking areas at Train Mountain:

- (1) Outside the front of the Backshop
- (2) Outside the east door of the Hall of Flags
- (3) Outside the Motor Pool (Maintenance Building)

Due to the high fire danger at Train Mountain during the summer, we have zero tolerance for anyone smoking outside one of the designated areas.

There is NO SMOKING anywhere out on the track!

Members, Guests, and Visitors that continue to violate the Train Mountain Smoking Policy may be asked to leave.

Please submit your volunteer hours. If you work off site or at home on Train Mountain projects - these hours count.



REMEMBER: No job is complete without the paperwork!

Visitors to Train Mountain:

Train Mountain is very popular and is continually attracting visitors from throughout the world. We announce that our hours are from 10:00 AM until 3:00 PM Monday through Friday during the summer, and 10:00 AM to 2:00 PM during the winter. The office is closed on weekends except during meets, and then only when volunteers are available to open the office.

Our insurance advisors request that all people (members and visitors) complete and sign a liability release. If **YOU** as a member encounter visitors on the property without a visitors pass please direct them to the office so that we can insure that a release has been completed and a visitors pass has been issued.

If **YOU**, as a member, open the gate and allow visitors to pass through - **YOU** are responsible to see that the release has been completed, and **YOU** are liable for them until they sign a release. Releases are available in the mailboxes near the office for those times the office is closed. There are also releases available in the kitchen and in the back shop.

If you do not want to, or do not have the time to, ensure that the releases are completed - then please graciously explain that the train park is closed to visitors and that the open hours are normally (Winter - 10:00 AM until 2:00 PM)(Summer - 9:00 AM until 3:00 PM) Monday through Friday. To arrange other hours visitors should call the office at 541-783-3030.

PUBLICATION DEADLINE CHANGING: Submissions to the Gazette must be received by the 15th of the month of publication.

The fifteenth of the month is to be the last day to submit material. Material received after the 15th of the month may be held until the following month or rejected.

SUBMISSION CRITERIA

Articles and ads may be submitted via a pdf file, MS WORD, Open Office, or similar text file.

Please use a common open source FONT such as ARIAL that can be displayed in all Browsers, and is easy to read. Please do NOT use the Calibri font, as we must take the time to convert it to Arial.

If your document has an embedded image, you must also include the image separately as a jpg, png, or similar image file.

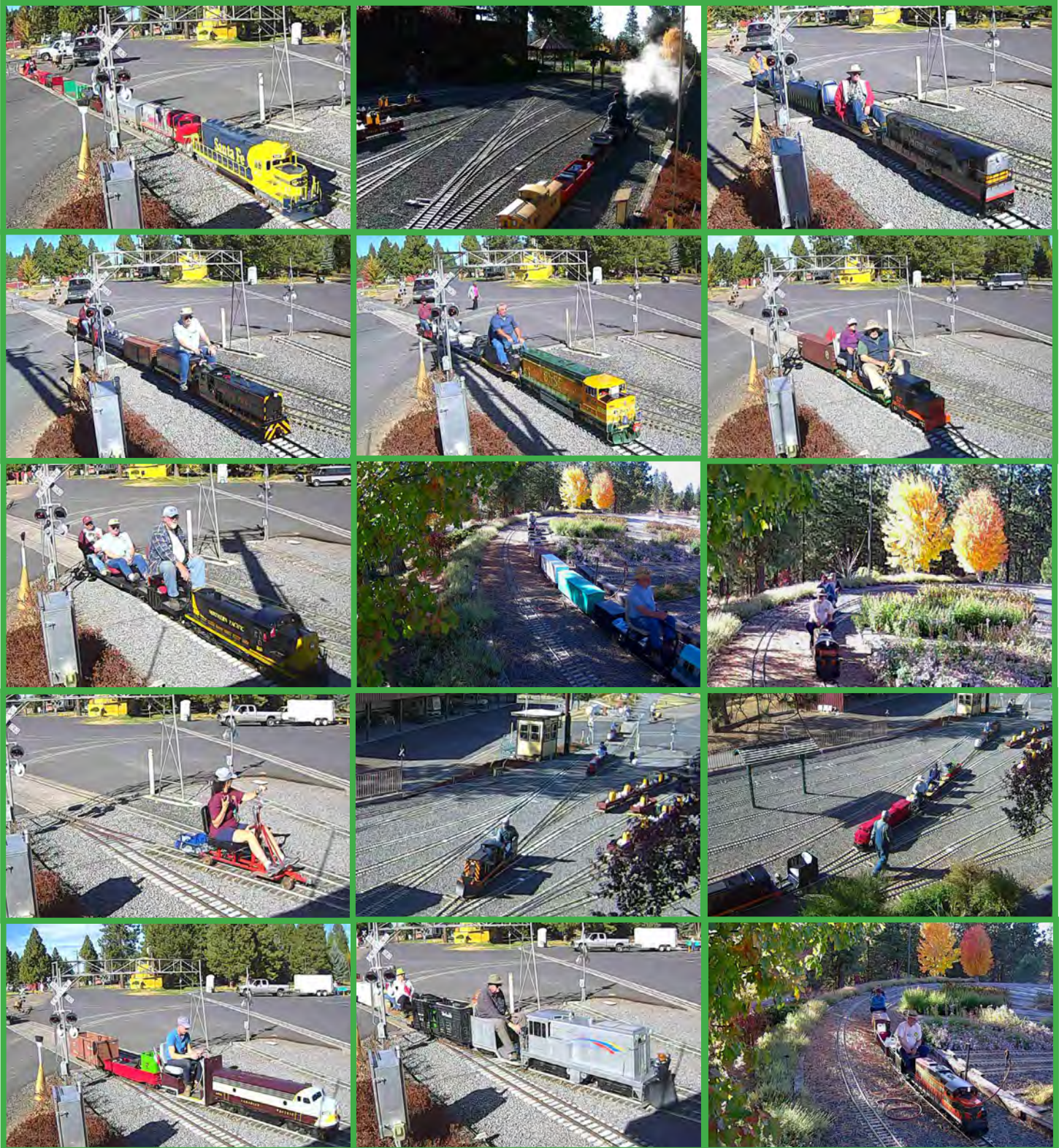
WEB-CAM GALLERY

Photos by: The Web-Cam



WEB-CAM GALLERY

Photos by: The Web-Cam

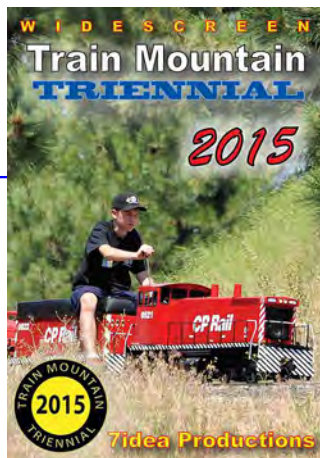


CLASSIFIEDS



2015 Triennial Video is available now!

The 2015 Train Mountain Triennial video from Aaron Bentsen at 7Idea Productions is now available through the [Train Mountain on-line store](#) or the main office at Train Mountain. Give them a call at 541-783-3030 and get a copy on the way to your place. It's \$29.95 for the video and free shipping and handling lower 48, \$6 S&H for all others. A most enjoyable video shot by a true video artist and of course our favorite subject, Train Mountain!



Our good friend Jim over at Discover Live Steam has placed ads for us on his terrific website, thanks Jim. discoverlivesteam.com Did you see the great article and front cover story from the November / December 2015 issue of Live Steam and Outdoor Railroading? It is a great article covering the 2015 Triennial. and the great gang of folks that hang around the place and put on terrific live steam train meets. Pretty cool! web: livesteam.net



Donations\$ Needed!

HAVE SOMETHING YOU WANT TO SELL?

Place an ad in the Gazette!
 1/8 Page: \$25/month or \$250/year
 1/4 Page: \$40/month or \$400/year
 1/2 Page: \$70/month or \$700/year
 Full Page: \$125/month or \$1250/year

Published by Train Mountain Railroad
 P.O. Box 438
 Chiloquin, OR 97624
 Email: info@tmrr.org Phone: 541-783-3030

Contributors: TMRR BOD, Friends, TMI
 Photos: Tom Watson





Located only 1.5 miles off Hwy 97 in Downtown Chiloquin in the same building as the Post Office
212 1st Avenue, Chiloquin, OREGON 97624 -- Phone: (541) 783-0988



What is Amazon Smile?

In a nutshell, it is a way for Train Mountain to receive 501c3 donations from Amazon.

According to Amazon: AmazonSmile is a simple and automatic way for you to support your favorite charitable organization every time you shop, at no cost to you. When you shop at smile.amazon.com, you'll find the exact same low prices, vast selection and convenient shopping experience as Amazon.com, with the added bonus that Amazon will donate a portion of the purchase price to your favorite charitable organization. You can choose from nearly one million organizations to support.

When you go to Amazon Smile, choose Train Mountain Institute as your charity. In order for this to work, you must always start from Amazon Smile. Then all else is the same, your account, wish lists, etc. Also available is a direct link: <http://smile.amazon.com/ch/27-4031025> for the TMI account.

The AmazonSmile Foundation will donate 0.5% of the purchase price from your eligible AmazonSmile purchases. I found that just about everything I purchased lately is eligible.

If we can get a large number of Train Mountain supporters to take advantage of the Amazon Smile program, this could result in sizable donations to Train Mountain.

[Click here for more information.](#)



Kla-Mo-Ya Casino

34333 Hwy 97 N
Chiloquin, OR 97624
541-783-7529 or 1-888-KLAMOYA
www.klamoyacasino.com

Kla-Mo-Ya Casino opened in 1997 and is owned and operated by the Klamath, Modoc and Yahooskin Tribes. Set in the beautiful pines of Southern Oregon, we are located on Highway 97 near the junction of Highway 62 (Crater Lake Highway).

We are open 24 hours a day, 365 days a year, and welcome travelers and groups from across the country year round.

Our Peak to Peak Restaurant is open 24 hours a day, with a full service lounge and beverage service available out on the gaming floor. Choose from great menu items like juicy steaks, classic salads and pastas, or try our beefy Triple 7 Burger if you are *really* hungry. Dine in or take out, we have a host of friendly staff to serve you. Check out our current menu from the Dining page of our website, and watch for monthly special features. The Peak to Peak restaurant welcomes groups, meetings or parties for special occasions.

Open from 7am to 9pm, the Espresso Bar serves a wide variety of espresso and coffee drinks, hot or cold, as well as fruit smoothies, frozen yogurt, desserts, and quick to-go lunches.

Our gaming floor has 344 slots with new games and themes being brought in all the time. Find out about our current slot promotions and check out recent jackpot winners on our website and Facebook page.

Try your hand at one of our four Blackjack tables. We offer double deck and six-deck blackjack with \$3 tables available every Monday. Keep up with promotions and tournaments available by checking our website.

Hours of operation:

Weds & Thurs: 12 noon – 8pm

Friday through Sunday: 12
Noon – 12 Midnight

(closing times may vary depending on play)

Stop by the Bonus Club to sign up for a free membership card to earn rewards and qualify for our many promotions and giveaways. While you are there, browse through the unique selection of items in our Gift Shop.

RVers, Truckers and large vehicles are always welcome, with plenty of free overnight parking available. Stop by the Bonus Club to ask about discounts and perks.

Come enjoy the warmth and excitement of Kla-Mo-Ya casino.



Crater Lake Junction Travel Center

34005 Hwy 97 N
Chiloquin, OR 97624
541-783-9800

The Crater Lake Junction Travel Center opened for business in 2010, and is owned by the Klamath, Modoc and Ya-hooskin Tribes. Open 24 hours a day and located just next door to Kla-Mo-Ya Casino as you enter, this travel center offers competitive fuel prices and many convenience items.

Travelers can fuel up with gas, diesel, or propane. Stop in for a snack or soda, or grab a quick meal featuring Mexi-Go or Mountain Fresh Pizza. Free Wi-Fi, a comfortable lounge with large screen TVs, laundry and shower facilities, and ATMs are all available.

Make sure to ask for a Crater Lake Junction Travel Center rewards membership card so that you can earn points for each purchase and visit. Your earned points can be applied toward future purchases.

Truckers, ask about trucker services and benefits for each visit. Convenience items and truck accessories are for sale, along with many useful daily provisions.

Crater Lake National Park

Crater Lake National Park is located off Highway 62, just 34 miles from Kla-Mo-Ya Casino and the Crater Lake Junction Travel Center. After playing and fueling up, discover the world-famous beauty and amazing history of Crater Lake. Groups and parties, ask about casino shuttle service for your outing or adventure.

Shuttle Service to and from Train Mountain

Kla-Mo-Ya Casino and the Crater Lake Junction Travel Center are also offering a free shuttle service for Train Mountain Members, Guests and Visitors.

Train Mountain people should see the TM Office for more details, schedules, and special events.