



# The Mountain GAZETTE

© Copyright 2017, Train Mountain Railroad

An Official Publication of the Train Mountain Railroad - Issue: Vol. #3 Issue #46 - **May2017**

## May at Train Mountain

The Narrow Gauge Work Week was progressing as we were assembling this issue of the Gazette. Again, the Members and Volunteers attending the Work Week are making progress on some projects and completing other projects. Many thanks to all those helping get Train Mountain open for the run season, and for working on the long term improvement projects.

We will be needing help this summer installing LED lighting. Thanks to a generous donation from Carl and Marg that covers the TM part, we will be receiving approximately \$30,000 worth of LED lights and fixtures. As soon as we receive the parts, we need to install all the lights. This will require rewiring the old fixtures and installing the LED lamps, and installing some new LED fixtures.

In order for Train Mountain to qualify for larger grants to improve Train Mountain, we must show a track-record of satisfactory and timely completion of small grants and projects similar to the LED lighting project. While the LED project is not technically a grant, but rather matching funds from Energy Trust of Oregon, successful completion will look good during future grant application vetting.

It is also important for us to complete the restoration of the Rio Grande caboos, for which we presently have a grant to help pay for the painting of the caboos from the Rocky Mountain Historical Society. We have made some progress on the caboos this Work Week.

The Containerville back row now has nine containers set in place that will be ready for occupancy soon. See the update and images in this Gazette issue.

## Train Mountain 2017 Operations Meet

It's coming up on that time of the year, the Ops Meet Week is from Saturday, June 24 through Sunday, July 2. Don't miss it, this is the annual meet where you "run with a fun purpose instead of just running around".

Join in the fun of operating a passenger train or delivering freight around the world's largest miniature train park right in the middle of our beautiful Pacific Northwest. It's not difficult, it's easy and fun. There is no pressure, you don't have to already know the sidings by name or where they're at; we'll help you every step of the way. In fact, this meet is where you will learn more about your Train Mountain Railroad in one easy week of fun and play.

If you can run a train, you can operate a TM Passenger or Freight train with no previous experience at an Ops Meet. Just sign-up and select your passenger route or request a car or group of cars to be delivered. We'll explain the rest, help you with where you need to go, and then you're off on fun adventure and will probably learn something new with each run you take.

If you don't have a train, you can still be part of a train crew. Every train needs a conductor, freight trains need flagmen and brakemen to help with the duties of safe train operation and car spotting. There's something for everyone at the Ops Meet.

Join us for the work week to help get ready for the meet. Volunteer to make sure the cars are in top shape, help get the rolling stock in order so they can be delivered to their proper sidings before the meet starts, and on Sunday run the rails to gather in the cars and return them to the Main Yard. It's fun, easy, and rewarding; do it once and you will be back for more next year.

If you have questions or would like to volunteer to help during the work week or the meet, contact one or more of the following people to get your answers or sign up to help out:

For Passenger Trains, John Lovely at [jmlprod@aol.com](mailto:jmlprod@aol.com) or 928-774-7589

For Freight Trains, Richard Croll at [railroc66@yahoo.com](mailto:railroc66@yahoo.com) or 510-227-9174

For TM Tour Trains, Jeff Mills at [jhmills51@hotmail.com](mailto:jhmills51@hotmail.com) or 253-740-6013

For Dispatch, John Cooper at [johncoop@charter.net](mailto:johncoop@charter.net)

Make your plans, register with the TM Office for the meet, and we'll see you at the 2017 TM Ops Meet for great time with great people that all love trains.

# Cars, Cars, and More Cars

Would you like to see your car(s) included in this year's Ops Meet rolling stock pool? We always need more cars available to move during the Ops Meet; our current inventory is down and your rolling stock will help make a difference.

We would like to add a couple new industries and utilize additional sidings during the 2017 Ops Meet but need some additional cars to be used for them.

If you have rolling stock itching to be "coupled" with new friends, then "scratch" down the details of your car or cars (Road Name, ID Markings, and car type) and email them to Jim Armstrong ([armstrong.jandg@gmail.com](mailto:armstrong.jandg@gmail.com)) and they will part of Train Mountain's most fun meet of the year.

It's always enjoyable for the train crews to see new and different cars out on the rails and this is your chance to be part of that excitement. Thank you!

# Assistance, Please !

This year's Ops Meet sure could use your help. As always, we need extra volunteers to help with the additional tasks of getting the cars ready and positioned for all the fun we have during the meet weekend.

These jobs are not difficult and don't require any prior experience, they just need you to volunteer to help make things happen. During the Work Week we need assistance with car inspection on Monday, car sorting on Tuesday, and car set-outs on Wednesday. These tasks include train crews who can move cars around the yard and on-the-ground hands who will help with inspecting & directing the cars in addition to keeping track of the good old paperwork involved.

We also need help during the actual meet on Friday and Saturday; just a couple of hours of your time would be of great assistance. You can help out in the Freight and Passenger Office, you can help at the Dispatcher's Desk, or you can help with the daily Guest Train Tours of Train Mountain. In fact, you can help at more than one of them to get a feel of what it takes to run a "real" railroad of the past and present.

Sunday is a special day but also needs volunteers (train crews and on-the-ground hands) to help gather up the cars and put them back in their resting places. Normally, this is a free for all but this year, Richard Croll will be trying something different with a little more organization to it.

Want to help with any of these easy and fun adventures:

## **For the Work-Week Tasks, please contact:**

Richard Croll at [railroc66@yahoo.com](mailto:railroc66@yahoo.com) or 510-227-9174

## **For Week-End Tasks, please contact:**

Freight & Passenger Office  
Richard Croll at [railroc66@yahoo.com](mailto:railroc66@yahoo.com) or 510-227-9174

Dispatch Desk: John Cooper at [johncoop@charter.net](mailto:johncoop@charter.net)

Daily Train Tours:  
Jeff Mills at [jhmills51@hotmail.com](mailto:jhmills51@hotmail.com) or 253-740-6013

## **For Sunday Car-Wrangling Tasks, please contact:**

Richard Croll at [railroc66@yahoo.com](mailto:railroc66@yahoo.com) or 510-227-9174

Remember to always check the white board in the Hall of Flags each day for special announcements, meeting times, and other important information concerning the Ops Meet.

## Greetings from Joyce at the front office:



Late in April we had a large group of six and seventh graders visit from a Charter School in San Jose, California. The weather was not nice so we couldn't get them out on the trains, but Russ Wood, Dennis Ward, Tom Watson and Danny Chamrad III, made it a very special, fun and educational event for them despite the weather! Thank you all so much for doing that.

Jim and Sabra Rickman have been working on the library and converting old Train Mountain Railroad videos on VHS to DVD's.

We are now in May and up until two or three weeks ago, we were getting more of the Chilouquin "variety" weather; a little rain, hail, snow, sun, cold and warm all in the same day. Now it is in the 70's and 80's and mostly sunny during the days and 40's at night.

Tom Watson and I attended a free three hour branding workshop, It was an eye-opening educational event which included great and helpful information we will be able to use here.

Last week we hosted the annual 30 Mile Club meeting and event. 30 Mile Club is composed of business people from local area businesses. We had the meeting, rail tours, a meet and greet hour and then a great dinner catered by the Pot Belly Café. Lots of fun!

We are now in the Narrow Gauge work week. Train Mountain Railroad Museum is bustling with activity – lots of members and visitors! And lots of volunteering going on! On Memorial Day we had 33 tourists! One was from Australia, one from Utah, one from New York, six from California, three from Washington, six from Klamath Falls, Oregon and fifteen from Portland, Medford, Prineville, LaPine, Redmond and West Linn, Oregon.

A couple of very important reminders: Only employee, Richard Cox can light the burn pit. No one else should ever do this. Special permits are required and specific rules must be followed in order to burn and failure to follow the correct protocol could result in hefty fines for Train Mountain.

Poisons, such as d-CON, which are intended to kill mice or other small rodents should not be used on our property. Desired wildlife may be killed by ingesting a poisoned mouse or rodent. In other words, the poisoning does not stop at the poisoned mouse – it just goes on killing right on up the food chain with a slow and excruciating death. So, please do not use these products here!

Okay, on to the Narrow Gauge Meet this week-end. And, at the end of June is the Operations Work Week and Meet.

Have a fun summer!

# My Experience as Volunteer Coordinator

By Jeff Mills

I came forward and answered the call for the Volunteer Coordinator for the Spring Awakening Meet this year. Train Mountain Railroad needs to spread the duties of Volunteer Coordinator to as many members as possible so more members gain experience in leading our volunteers during a meet. And it's not that HARD!!

I found this experience to be much easier than I expected. I started with an outline of the work I thought needed to be accomplished during that work week and submitted it to the Train Mountain Officers for suggestions and comment. Next, I modified my outline and felt ready for the first Volunteer Morning meeting. Our first meeting had very light attendance as it was Saturday and very few out of towners had arrived that early. So we were pretty casual in the work assignments. But, as the week progressed, more and more members attended and the meetings became more formal.



I would announce the weather forecast for the day including UV rating. I advised attendees of the health and safety requirements and proceeded to the "TO DO" List. I got volunteers for most jobs however some of them were assigned to specific individuals based on requirements for the job and the skills of the volunteer. All the volunteers were eager to work which made my job much easier. After the meeting I would make sure any special equipment or supplies were available for those work crews. I tried to make sure each crew understood what they needed to accomplish that day. Later in the week, some workers were delegated to other members already leading specific projects for instructions and supervision.

At the Volunteer Meeting on the last day of the work week I read off the Outline of TO DOs on what tasks were accomplished, rather than what was left to be done. This was taken from The One Minute Manager guidelines from my work career and I recommend volunteer coordinators to review that information as it could be very useful. There were fifteen items to do and twelve were completed or in progress. This made all present feel a sense of accomplishment because it was a very productive work week.

I had a GREAT experience leading a motivated group of volunteers. Together, we accomplished a great deal. I would encourage other members to come forward and lead another group of Train Mountain volunteers. At this writing there is still an opening for Volunteer Coordinator for the August and the Big Build Meets.

# I AM NOT A ROBOT!

There have been a few changes made to the member's site, specifically where payment information is entered. The most noticeable change is that we have added a question asking if you are a robot. You check the box and depending on a bunch of things, you may be asked to choose from a set of pictures. You may be asked to click the pictures that show street signs, or click on pictures that show store fronts. It seems silly, but the questions and challenges are carefully crafted and updated by Google, and have an amazing success rate at determining if the entity pressing the keys is a real person or a computer program ("robot") trying to gain access.

The technology is called "CAPTCHA", or in our case "reCAPTCHA" and is quickly being the standard for online protection against robots, which pose a real problem to web sites. This is replacing the (to me) very irritating practice of trying to figure out what letters and numbers they are showing in fuzzy text. If you have questions or problems getting around the new challenge (or if you are a robot!), feel free to give Joyce a call in the office.

Dale Furseth

"the computer guy"

## REPRINT because We still need Meet Coordinators

### Meet Coordinators by Chris Donhost

For all of us that like Train Mountain, we could easily list 100 different reasons why it is an awesome place. In fact, Train Mountain is such an amazing facility that people come from all over the world to experience "The Dream" every three years at the Triennial. A new chapter has emerged since the passing of our founder, and more than ever the individual member is critical to keeping the dream alive. Our collective interests, combined with our personal experience, are what Train Mountain needs to survive. No matter what experience you bring to the table, there is a place for you at Train Mountain. Currently, we are in desperate need of Meet Coordinators to help with one (or more) of the 7 meets held each year. Being a professional event coordinator is not required. What would be helpful is a person that likes to plan ahead, is organized, and can communicate well with others. Are you ready to take your Train Mountain experience to the next level? Don't just come see, but be a part of the dream! We need YOU to take part in the mission, in order for Train Mountain to live on for your enjoyment, and for the future generations of the live steam hobby.

# Highway Signs for Train Mountain

by Russ Wood

I have a project that I have been working on for about three years now. The project is signs on Highway 62 (Crater Lake Rd) and Highway 97 directing tourists to Train Mountain Railroad Museum. I will make this short so as not bore anyone to much, so here we go, first we joined two museum associations, then filed an application with Oregon Travel Experience, which is the front man for ODOT (Oregon Dept of Transportation), After all this we just received confirmation we have been approved for the signs. They will say Train Mountain Railroad Museum. They will be about ¼ mile from each intersection with S. Chiloquin Rd. and also right at the intersections. There will be a total of 8 signs similar to the ones shown here.



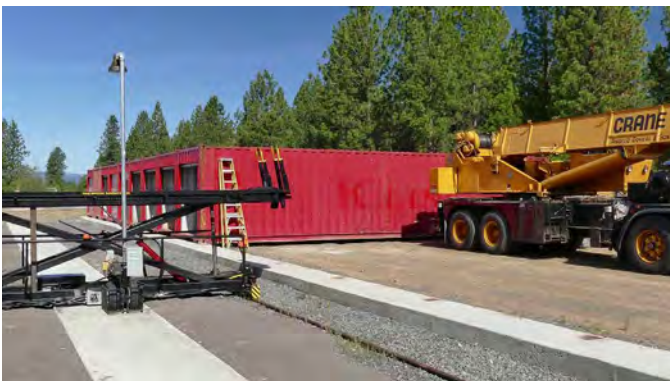


# Containerville Report

The refurbished containers, complete with roll-up doors installed, have arrived. The container supplier did a really great job on the door installation.

There are still some storage containers for sale. They are \$5,000 each with roll up door. If purchased, you would own the container but would be required to pay an annual storage space fee. This fee for the full year in 2017 is \$375. The fee would be prorated from time of occupancy. The contracts and rental information are available from the office. You can make a down payment on a container for \$2,500. Full payment would be required when your container is ready for use.

**The West end of the back row will be ready for occupancy very soon.**  
A Video showing the container setting is here: <https://youtu.be/fJleym6p5Pg>



## **Fires at Train Mountain**

We have had a no 'open fire policy' at Train Mountain for many years. Yes, we have 'burn pits' to get rid of our winter debris. However there are specific forestry rules that apply to Train Mountain regarding these burn pits. We are registered as a 'private forest' and as such we can only burn when forestry say we can. When we receive permission to burn, the only person allowed to set and control the fires is Richard - absolutely no one else may light a burn pile. On occasion, there might be some residual heat remaining in the burn pits, so be very careful when dumping pine needles into the burn pits. We don't want to accidentally restart one of the old fires. We CANNOT burn after May 31<sup>st</sup> regardless.

## **Chiloquilters Quilt Show**

This year is the 12<sup>th</sup> Annual Quilt show hosted by the very talented ladies known locally as the Chiloquilters. The good news is that the Quilt Show is scheduled for July 1<sup>st</sup> and 2<sup>nd</sup>, during the Operations Meet weekend. The show is held in the Chiloquin Community Center located in beautiful down town Chiloquin. The lighting in the Center really shows off the over 100 quilts on display each year. There will even be a couple of vendors displaying their wares. Hours for both days are from 10am to 4pm. Admission is \$3, \$2 for seniors 55 and over. Food is available during the event.

## **Volunteer Coordinators for 2017**

Jeff Mills got us off to a great start by being the first Coordinator at the Spring Awakening. He started the 'wish list' (all those things that needed to be done. He conducted the morning meetings and reviewed the tasks accomplished that day. Great job. Next up is member Danny Chamrad who has volunteered to be the Coordinator for the Narrow Gauge Meet starting May 27<sup>th</sup>. He talks a little funny but really is a hard worker and like the rest of us, really loves Train Mountain.

The reason for having a different Coordinator each meet is to build up the pool of members who will then have the experience to help make up the team for the 2018 Triennial. The Tri is too big for an individual to take on but the team approach works very well.

## **Rail Tour Docents**

As the tourist season is starting to gain some momentum we will need trained Rail Tour Docents to help with this important museum function. We are developing a training program and Pam Williams is reworking the write up for the tours. If you are interested in helping out we would really appreciate it. Please check in with Russ in the Office to get signed up for training.

## **Notice to all Members**

Due to security concerns, the Gate Code for the Train Mountain Main Gate was changed after the Triennial. Any Member planning to arrive at Train Mountain when the Office is closed will need to contact the Office prior to arrival to arrange to get the new Gate Code.

### **Train Mountain is a NO SMOKING Facility**

During recent events, many Members and their Guests have been ignoring this policy. There are only three designated smoking areas at Train Mountain:

- (1) Outside the front of the Backshop
- (2) Outside the east door of the Hall of Flags
- (3) Outside the Motor Pool (Maintenance Building)

Due to the high fire danger at Train Mountain during the summer, we have zero tolerance for anyone smoking outside one of the designated areas.

**There is NO SMOKING anywhere out on the track!**

**Members, Guests, and Visitors that continue to violate the Train Mountain Smoking Policy may be asked to leave.**

### **Train Mountain EMAIL**

Please use [info@trainmtn.org](mailto:info@trainmtn.org) as the primary Train Mountain email contact. You may use [info@tmrr.org](mailto:info@tmrr.org) as a back-up.

### **Gazette EMAIL Notice**

**DOES NOT ALWAYS WORK**

Before the email notices ever go out, the Gazette is always published on the Train Mountain website.

<http://trainmtn.org/tmrr/pages/gazette/gazette.shtml>

## Visitors to Train Mountain:

Train Mountain is very popular and is continually attracting visitors from throughout the world. We announce that our hours are from 10:00 AM until 3:00 PM Monday through Friday during the summer, and 10:00 AM to 2:00 PM during the winter. The office is closed on weekends except during meets, and then only when volunteers are available to open the office.

Our insurance advisors request that all people (members and visitors) complete and sign a liability release. If **YOU** as a member encounter visitors on the property without a visitors pass please direct them to the office so that we can insure that a release has been completed and a visitors pass has been issued.

If **YOU**, as a member, open the gate and allow visitors to pass through - **YOU** are responsible to see that the release has been completed, and **YOU** are liable for them until they sign a release. Releases are available in the mailboxes near the office for those times the office is closed. There are also releases available in the kitchen and in the back shop.

***If you do not want to, or do not have the time to, ensure that the releases are completed*** - then please graciously explain that the train park is closed to visitors and that the open hours are normally (Winter - 10:00 AM until 2:00 PM)(Summer - 9:00 AM until 3:00 PM) Monday through Friday. To arrange other hours visitors should call the office at 541-783-3030.

## PUBLICATION DEADLINE:

Submissions to the Gazette must be received by the 15th of the month of publication.

The fifteenth of the month is to be the last day to submit material. Material received after the 15th of the month may be held until the following month or rejected.

## SUBMISSION CRITERIA

Articles and ads may be submitted via a pdf file, MS WORD, Open Office, or similar text file.

Please use a common open source FONT such as ARIAL that can be displayed in all Browsers, and is easy to read. Please do NOT use the Calibri font, as we must take the time to convert it to Arial.

If your document has an embedded image, you must also include the image separately as a jpg, png, or similar image file.

## Train Mountain Library News

Staff continues to sort through donated magazine titles to fill in what's missing. Today we worked with Narrow Gauge Short Line and Model Railroad Craftsman. We do find many duplicates. In case you're looking for an issue to complete a collection, let us know.



If you make book donations, please drop them by the office instead of leaving them in library. This way Joyce can process them before we receive them upstairs to put on shelf.

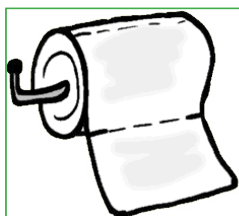
As we approach the summer season, we are preparing for more visitors. Please sign the guest book! In order to spruce up the library for younger guests, we will have, each Tuesday, some game, puzzle or book to share. We want everyone to realize that the library is not just for the adults!

## Volunteer Hours Reporting

Dale Furseth has worked his techie magic on the member's part of our website again. You can now report your monthly volunteer hours online. From the Train Mountain Railroad home page, click on "Online Member Resources: Join Train Mountain: "Register for Meets", then on "Enter Volunteer Hours" or go there directly with this link: [https://trainmtn.org/tmr-members/Member\\_VolunteerHours.aspx](https://trainmtn.org/tmr-members/Member_VolunteerHours.aspx)

Choose your name from the drop down menu, enter your total hours in the box that matches the month you are reporting your hours for and click on "Update Information" to submit them. So-o-o simple! We hope you enjoy using this new feature.

**Please submit your volunteer hours. If you work off site or at home on Train Mountain projects - these hours count.**



**REMEMBER: No job is complete without the paperwork!**



# WEB-CAM GALLERY

Photos by: The Web-Cam



# WEB-CAM GALLERY

Photos by: The Web-Cam



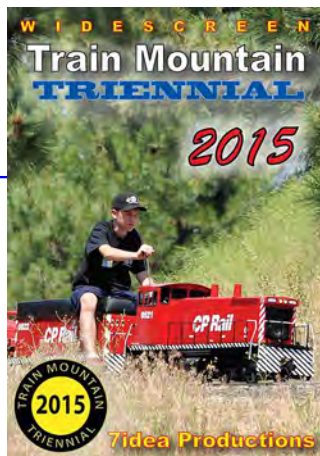


# CLASSIFIEDS



## 2015 Triennial Video is available now!

The 2015 Train Mountain Triennial video from Aaron Bentsen at 7Idea Productions is now available through the [Train Mountain on-line store](#) or the main office at Train Mountain. Give them a call at 541-783-3030 and get a copy on the way to your place. It's \$29.95 for the video and free shipping and handling lower 48, \$6 S&H for all others. A most enjoyable video shot by a true video artist and of course our favorite subject, Train Mountain!



Our good friend Jim over at Discover Live Steam has placed ads for us on his terrific website, thanks Jim. [discoverlivesteam.com](http://discoverlivesteam.com) Did you see the great article and front cover story from the November / December 2015 issue of Live Steam and Outdoor Railroading? It is a great article covering the 2015 Triennial. and the great gang of folks that hang around the place and put on terrific live steam train meets. Pretty cool! web: [livesteam.net](http://livesteam.net)



**Donations\$  
Needed!**

### HAVE SOMETHING YOU WANT TO SELL?

Place an ad in the Gazette!  
 1/8 Page: \$25/month or \$250/year  
 1/4 Page: \$40/month or \$400/year  
 1/2 Page: \$70/month or \$700/year  
 Full Page: \$125/month or \$1250/year

Published by Train Mountain Railroad  
 P.O. Box 438  
 Chiloquin, OR 97624  
 Email: [info@tmrr.org](mailto:info@tmrr.org) Phone: 541-783-3030

Contributors: TMRR BOD, Friends, TMI  
 Photos: Tom Watson





Located only 1.5 miles off Hwy 97 in Downtown Chiloquin in the same building as the Post Office  
212 1st Avenue, Chiloquin, OREGON 97624 -- Phone: (541) 783-0988



## What is Amazon Smile?

In a nutshell, it is a way for Train Mountain to receive 501c3 donations from Amazon.

According to Amazon: AmazonSmile is a simple and automatic way for you to support your favorite charitable organization every time you shop, at no cost to you. When you shop at smile.amazon.com, you'll find the exact same low prices, vast selection and convenient shopping experience as Amazon.com, with the added bonus that Amazon will donate a portion of the purchase price to your favorite charitable organization. You can choose from nearly one million organizations to support.

When you go to Amazon Smile, choose Train Mountain Institute as your charity. In order for this to work, you must always start from Amazon Smile. Then all else is the same, your account, wish lists, etc. Also available is a direct link: <http://smile.amazon.com/ch/27-4031025> for the TMI account.

The AmazonSmile Foundation will donate 0.5% of the purchase price from your eligible AmazonSmile purchases. I found that just about everything I purchased lately is eligible.

If we can get a large number of Train Mountain supporters to take advantage of the Amazon Smile program, this could result in sizable donations to Train Mountain.

[Click here for more information.](#)



## Kla-Mo-Ya Casino

34333 Hwy 97 N  
Chiloquin, OR 97624  
541-783-7529 or 1-888-KLAMOYA  
[www.klamoyacasino.com](http://www.klamoyacasino.com)

Kla-Mo-Ya Casino opened in 1997 and is owned and operated by the Klamath, Modoc and Yahooskin Tribes. Set in the beautiful pines of Southern Oregon, we are located on Highway 97 near the junction of Highway 62 (Crater Lake Highway).

We are open 24 hours a day, 365 days a year, and welcome travelers and groups from across the country year round.

Our Peak to Peak Restaurant is open 24 hours a day, with a full service lounge and beverage service available out on the gaming floor. Choose from great menu items like juicy steaks, classic salads and pastas, or try our beefy Triple 7 Burger if you are *really* hungry. Dine in or take out, we have a host of friendly staff to serve you. Check out our current menu from the Dining page of our website, and watch for monthly special features. The Peak to Peak restaurant welcomes groups, meetings or parties for special occasions.

Open from 7am to 9pm, the Espresso Bar serves a wide variety of espresso and coffee drinks, hot or cold, as well as fruit smoothies, frozen yogurt, desserts, and quick to-go lunches.

Our gaming floor has 344 slots with new games and themes being brought in all the time. Find out about our current slot promotions and check out recent jackpot winners on our website and Facebook page.

Try your hand at one of our four Blackjack tables. We offer double deck and six-deck blackjack with \$3 tables available every Monday. Keep up with promotions and tournaments available by checking our website.

Hours of operation:

Weds & Thurs: 12 noon – 8pm

Friday through Sunday: 12  
Noon – 12 Midnight

(closing times may vary depending on play)

Stop by the Bonus Club to sign up for a free membership card to earn rewards and qualify for our many promotions and giveaways. While you are there, browse through the unique selection of items in our Gift Shop.

RVers, Truckers and large vehicles are always welcome, with plenty of free overnight parking available. Stop by the Bonus Club to ask about discounts and perks.

Come enjoy the warmth and excitement of Kla-Mo-Ya casino.



## Crater Lake Junction Travel Center

34005 Hwy 97 N  
Chiloquin, OR 97624  
541-783-9800

The Crater Lake Junction Travel Center opened for business in 2010, and is owned by the Klamath, Modoc and Ya-hooskin Tribes. Open 24 hours a day and located just next door to Kla-Mo-Ya Casino as you enter, this travel center offers competitive fuel prices and many convenience items.

Travelers can fuel up with gas, diesel, or propane. Stop in for a snack or soda, or grab a quick meal featuring Mexi-Go or Mountain Fresh Pizza. Free Wi-Fi, a comfortable lounge with large screen TVs, laundry and shower facilities, and ATMs are all available.

Make sure to ask for a Crater Lake Junction Travel Center rewards membership card so that you can earn points for each purchase and visit. Your earned points can be applied toward future purchases.

Truckers, ask about trucker services and benefits for each visit. Convenience items and truck accessories are for sale, along with many useful daily provisions.

### Crater Lake National Park

Crater Lake National Park is located off Highway 62, just 34 miles from Kla-Mo-Ya Casino and the Crater Lake Junction Travel Center. After playing and fueling up, discover the world-famous beauty and amazing history of Crater Lake. Groups and parties, ask about casino shuttle service for your outing or adventure.

### Shuttle Service to and from Train Mountain

Kla-Mo-Ya Casino and the Crater Lake Junction Travel Center are also offering a free shuttle service for Train Mountain Members, Guests and Visitors.

Train Mountain people should see the TM Office for more details, schedules, and special events.