



# The Mountain GAZETTE

© Copyright 2017, Train Mountain Railroad

An Official Publication of the Train Mountain Railroad - Issue: Vol. #3 Issue #55 **February 2018**

## FEBRUARY AT TRAIN MOUNTAIN

has mostly been spent preparing for the Triennial. Many of the Committee Chairs are making great progress with the preliminary preparations. Dean has been doing a great job on the most thankless job out there, Track Assignments. Many of the not so visible, at this time, Committees are also getting ready. Please continue to volunteer for Triennial Committees. [Click here for the list of committee chairs.](#)

The locals are continuing to promote the Tuesday Taskers group. The concept of a group coming together the same day each week was to have crews available for tasks that just cannot be done with only one or two people. This seems to be working based on the productivity reported. See the Tuesday Taskers page for photos of just some of the many chores accomplished by the group.

Meanwhile, after an non winter December and January, the world at Train Mountain finally turned white. The bad news is we can't find the track to do any track work, but the good news is some people still know how to have fun.



**After all, isn't FUN the real reason we all come to Train Mountain.**

**Join Train Mountain now!!**

Please Use the Online App to Register or Join-- <https://trainmtn.org/tmrrmembers/>

2018-02-24 15:42:07  
TM17



2018/02/24 16:40:16:45



03:11 PM

2018-02-23 14:00:19  
TM23



2018/02/24 16:03:39:55

## The NEW Triennial OFFICE

There is a whole new Triennial function this year; the TRIENNIAL OFFICE. The Triennial Office is NOT the Train Mountain Main Office! It will be outside at the rear of Central Station overlooking the turntable on the deck. It is our new "Information Central". You have questions? We will have an answer or find one for you there and provide some plain ole Good Cheer to boot!

In order to relieve the business office of the event information dispensing and coordination tasks, we have formed a new center for information, volunteer coordination, general issue resolutions and direct access to your Triennial Organizing Committee.

Please do NOT go to the Main Office unless specifically directed to do so by the new Triennial Office. They will just send you back out to them.

We are dividing and conquering all the old issues in new ways.

During the work and the meet weeks, the Triennial Office will conduct Morning Volunteer Briefings, General Information Updates and News. At these briefings we will be recruiting volunteers for committees with open requirements. We will announce any event and park notices as well as operations changes of which attendees should be made aware. People will be able to sign up after each briefing. We will be posting "Needed Volunteers", General Announcements and new Information on a white board at this Triennial Office, where you can sign up as well.

If you want to sign up to volunteer, we encourage doing so NOW. Please feel free to contact us through the website at [www.tmr.org](http://www.tmr.org) . Or use the email address [info@tmr.org](mailto:info@tmr.org) with subject "Want To Volunteer".

If you have already contacted us with "Will volunteer as needed", we will be emailing or calling you with a QUESTIONAIRE asking for specifics on your skills and limitations.

We are looking forward to a successful 2018 Triennial with generous participation of ALL our Attendees. See you here!

Your 2018 Triennial Organizing Committee

## Kitsap Work Week 2018

The Kitsap Work Week will be April 7<sup>th</sup> Through April 13<sup>th</sup> this year. We will be working on various projects in anticipation of the 2018 Triennial. Jerry Crane will be the Volunteer Coordinator for this work week and we will hold the usual morning volunteer meetings to assign volunteers to various tasks.

The local residents look forward to this work week as it is a sure sign winter is over and they can recover from winter's cabin fever.

You do not have to be a KLS member to participate in this work week, all volunteers are welcome. This is a great time to come to Train Mountain and volunteer **without** having to **pay a meet fee**.

If your group wishes to create their own work week, please contact the Train Mountain Office with 3 of the 4 "W"s; who, what and when. We know the "where", so be there!

## Train Mountain on Oregon Public Broadcast Links

The new segment on Train Mountain and other Oregon destinations was aired in their Thursday, November 9<sup>th</sup> broadcast of Oregon Field Guide.

You can now view the entire segment directly on the opb.org website here:  
<https://watch.opb.org/video/3006578129/>

OPB has made the Train Mountain part of the broadcast available on Facebook,  
and can be viewed without being a [Facebook member by clicking here](#).



# TUESDAY TASKERS

The Tuesday Taskers meet every Tuesday morning to work on Train Mountain projects.

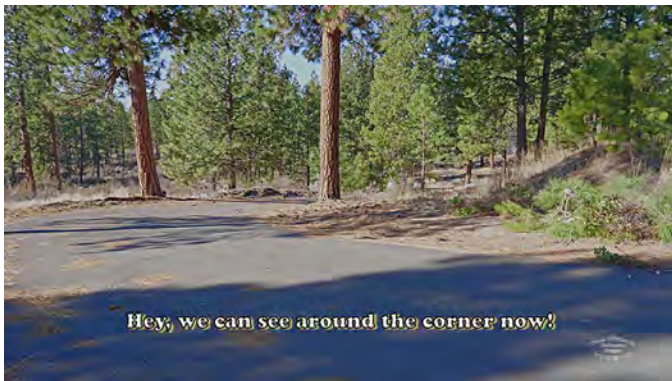
All volunteers are welcome to join the fun of working on the railroad



Let's talk about it for awhile  
over  
Food and Coffee



Richard continues to clean-up the mess along Katy Lane



Hey, we can see around the corner now!



Charlie and Dennis are busy building track panels



Dustin shows us the new pine needle vacuum



# Camping at the 2018 Triennial

Danny Chamrad

To get started, there is a document which can be accessed on the Train Mountain Railroad, TMRR, website. This document lays down the foundation for the rules for camping at TMRR facilities during the Triennial. To get to the document, go to the TMRR homepage by clicking this link: <http://trainmtn.org/tmrr/index.shtml>

In the section at the top of the page listed as "2018 Triennial", select the link "Click Here for Triennial Information." On the Triennial Information page, scroll down to the the link "Train Mountain Triennial Campground Policy.pdf." Please click on this link to read the policy on camping during the Triennial.

There are three camping areas at TMRR. The Six Acre Campground, the South Meadow Campground, and the Blue Caboose Campground. The Six Acre Campground is a primitive camp for tents, tent trailers, and small trailers or

campers. The South Meadow Campground is a primitive campground used for overflow tent camping and for motorhomes, travel trailers, fifth wheels and full size campers. Only the South Meadow Campground Host will have a water hookup. There are no sewer hookups. All others will draw water from the available spigots into portable containers. The Blue Caboose Campground is designated for use by Triennial Committee Chairpersons who have motorhomes, travel trailers, fifth wheels and campers that are equipped for power and water hookups. Reservations for the Blue Caboose Campground will be taken only for Committee Chairpersons who intend to arrive no later than the first day of the workweek and intend to work on Train Mountain projects during the workweek.

The Campground Hosts for the Six Acre Campground are Peter Wood and Beverly Hills. The Campground Host for the Blue Caboose Campground is Pam Williams. The Campground Hosts for the South Meadow Campground are Mike and Wendy Mulder. The Campground Hosts will be your first contact for information or help that you might need at the Campground.

Here are a few of the rules from the Triennial Campground Policy:

- Campsites must be occupied overnight, with a maximum of 6 persons per campsite.
- The use of air conditioners is not permitted since electric service is limited.
- Nighttime quiet hours are from 10 PM to 7 AM.
- Pets must be on a leash at all times they are not inside your personal vehicle.
- Pursuant to state and federal laws, only properly documented Service Dogs will be allowed inside buildings.

Please read the entire Triennial Campground Policy document to learn and understand all of the camping rules that will be in effect during the Triennial. Please follow all of these rules in order to make the Triennial Camping experience enjoyable for you and others. If you have any questions, please contact your Campground Host for clarification.

## Make the MOST of your Volunteer Time.

We've had great response from attendees to volunteer and help our committees. Many of those volunteers said, "Just put me where you need me". While this flexibility is good, the Volunteer Coordinators would like a little more input to make the best use of your abilities. We want ALL who volunteer to feel that they contributed to the best of their ability. We also want to keep some in their "comfort zone" if necessary or let them learn a new skill if they are willing. Many volunteers, however, are first-time attendees of a Triennial or never have been to Train Mountain and are understandably unsure of where they would fit.

Many of our core volunteers that are heading and assisting the committees are devoting 100% of their time to making this year's Triennial a great success. They often need a little break and some relief. Therefore, some duties may be short and to the point. Others, a little more involved. But rest assured they will provide a lot of mentoring and guidance to those with little or no experience who want to learn the ropes, so to speak. It will all be fun – guaranteed.

There are some factors to be considered when volunteering such as any physical limitations, current skill levels or amount of time a volunteer is willing to give. Additional attributes to consider when volunteering may be your willingness to learn a new skill and experience or need to work with others or privately. Please review them to help you pick a committee and perhaps choose several committees to assist.

Be sure to review the full committee list at [http://trainmtn.org/tmrr/pages/2018\\_triennial/2018\\_tri\\_committees.shtml](http://trainmtn.org/tmrr/pages/2018_triennial/2018_tri_committees.shtml)

### Physical Capabilities:

- \*Are you able to stand for long periods of time?
- \*Can you be in the Sun for periods of time?
- \*Do you have a Driver's License?
- \*Can you lift 40 pounds?
- \*Can you spend time on your knees?

### Skill Levels:

- \*Do you interact with people or do you prefer to limit your interactions?
- \*Do you have mechanical ability and experience with repair of Scale Trains?
- \*Do you have experience directing traffic or security?
- \*Do you need to work inside or prefer to be outdoors?

Time Requirement: Most shifts are two hours but more time or double shifts may be required for some committees.

- \*Are you attending Work week or Meet week only, or BOTH. The Meet week is just as important, perhaps more so, than volunteering during the Work Week.
- \*Security volunteers will be asked to work after-hours if possible.

\*\* If you are still willing to "Fill in As Needed", meaning you are ready and willing to take on ANY TIME for ANY TASK required, the Volunteer Coordinators will keep you on a separate list of "GOOD to GO" volunteers.

## The Cars of an Ops Meet - Anything to Add?

I know that the Big Event this year is the upcoming Triennial but the Ops Meet is waiting quietly in the Triennial's long shadow. This year's Ops meet will be the last weekend of July and for the first time, it will begin Thursday mid-morning instead of the usual Friday start time.

That means more time to carry passengers and haul freight around our spectacular facilities at Train Mountain. With more time to run, we would like to have a larger number and wider variety of rolling stock to offer you and your freight crew.

We are asking, no, we are encouraging you to offer some of your cars to be part of this year's Ops rolling stock inventory. We know there are many unique cars out there just waiting to be seen by appreciative rail fans and handled with care by eager freight haulers.

If you would like your car(s) to enhance this year's fun, please email Richard Croll (your Train-Master again this year) or Jim Armstrong (your Freight Agent) with the following information about the car(s) you will be bringing to the meet: Road Name, Identification Marks, Type of Car, and Description of Load (if it has one). You can reach Richard at [railroc66@yahoo.com](mailto:railroc66@yahoo.com) or Jim at [armstrong.jandg@gmail.com](mailto:armstrong.jandg@gmail.com).

It would be great if you could come for the work week and have your cars at Train Mountain on Monday, July 23 but if that isn't possible, anytime by Thursday morning, July 26 will work for us. We will inspect your cars for proper and working safety chains, give them a quick once over to make sure the trucks and couplers are operating smoothly, and then introduce them to their "starting positions" out on the layout. We'll also make it easy for you to pick them up by 10am in Main Yard on Sunday morning following the meet.

We look forward to seeing you and your cars at TM's most fun and popular meet of the year, the 2018 Ops Meet on July 26 through 29. If you have any questions or concerns, please call Richard at 510/227-9174 or Jim at 208/484-0073 and we'll do our best to answer them.

Keep on Haulin'



# Fire Equipment Gondolas

By Jeff Mills

The Fire Equipment Gondolas have been prepared and are ready for use. There are 11 of these fully equipped gondolas containing; 1 Indian Back Pack Pump, 2 round point shoves, 1 Pulaski and 5 one gallon jugs of water. We have yet to determine where they will be staged for the Triennial, please watch for future information. These have been provided so members can add them to their trains while traveling around Train Mountain thus providing TMRR with a roving FIRE PATROL. These cars exceed the ODF and USFS standards for carrying fire tools in the forest during FIRE SEASON. It is highly recommended members either carry the required tools on their trains or attach one of these gondolas to their consist. These cars are available on a first come, first-serve basis.

We have also equipped the Gators with a shovel, Pulaski, Fire Extinguisher and Indian Back Pack Pump, making these vehicles in compliance with the regulations.

All Train Mountain fire hand tools have a red stripe painted on the handles indicating they are for emergency fire use only. They must be kept in "ready to use" condition; sharpened and rust free. Also make sure the water containers are full. If any tools are discovered in less than perfect condition, please correct the situation or report their condition to the Office. This would also apply to the equipment on the Gators. Any missing equipment should be reported immediately so a replacement can be obtained.

We have also deployed 25 trackside Fire Extinguishers. These are charged with air pressure and water. They are stored in the small red and white structures along the tracks. If any are used, they must be refilled and pressurized. Do NOT leave a discharged Fire Extinguisher trackside. There are none of these Extinguishers beyond M&M corner.

I will be providing a fire equipment Demonstrations during the work weeks. Please take time to attend and be instructed in the basic fire safety procedures as well as proper use of this equipment.



## Train Mountain's Best Kept Secret Midway Garden Railroad



Located only a half mile southwest of Central Station is the Midway Garden Railroad, a G-Gauge outdoor layout set on approximately 3 acres of land.



G-Ville contains an eighth of an acre pond, which is surrounded by man-made mountains.



Volcanic rocks line the pathway, which leads you around mountains, and over the stream that feeds the pond.



G-Ville, as the members of Train Mountain call it, was created in 2008 by the husband and wife team of Dennis and Mort (Sharon) Ediger. Their untiring dedication to the Midway Garden Railroad is what makes it one of Train Mountain's visitor favorites.



Over 2000 feet of track has been laid by Mort and Denny at this garden railroad.



The track circles the pond, runs over bridges, trestles and runs through a tunnel. The tunnel is 12-feet long. They have 4 bridges, a 23-foot wooden trestle, an 8-foot wooden trestle, a 3½-foot wooden arch bridge and an 18-foot steel girder bridge.



There is a 10-foot waterfall with a 50-foot river leading to the pond. There are several dozen G-scale buildings, both kit and homemade from various materials, included throughout the layout.



Large pine trees and Manzanita bushes with a natural squaw carpet are incorporated into this sprawling layout.



There is power to the track; therefore, all can bring their G-Scale trains to run, whether they be live steam, electric or battery powered. The Edigers run mostly E-8's and Mallets. Most recent addition is a solar panel for power, pretty cool!

# VENDORS COMING TO 2018 TRIENNIAL

## PRECISION STEEL CAR

LARGE SCALE TRAIN CAR KITS, DETAILS, AND ACCESSORIES

Live Steam Warehouse  
*Detail Castings and Fittings*



## Live Steamer Parts, LLC



## 7idea Productions



## The Pike River Northern

Your suppliers for 1.6" scale locomotives and parts



## Midwest Scale Rail

*Rail and Track Supplies*



**Original Tom Bee Trucks**  
**Proudly Made in America!**  
mrtombee@aol.com islandpondrailroad.com

## Live Steam & OUTDOOR RAILROADING

## Greetings from Joyce at the front office:



December in February? Are the weather gods mixed up or what? One never really knows what to expect for winter in Chiloquin or so I think. Just a couple of weeks ago, because of some really nice weather, a few members were showing up to run their trains. Fun! Then winter seemed to go into full swing with the really low temps we typically see at the end of December and snow has come again to blanket the grounds. It's just another crazy mixed-up Chiloquin winter! The icicles and glistening white snow are pretty, though.

Visitors this month have come from Georgia, Florida, Utah, Washington and Oregon.

I think most of the work on the Klamath Tribes Sleep Inn is being done on the inside. I have seen lights on inside at night, so it seems a safe bet to say some electrical work has been done. I haven't found any February news articles on it, so all I can say is it looks like it is progressing along.

Char's leg is getting better. She and Jack make quite a team! Char has done more rearranging of the office and Jack has come in and re-rearranged it. Jack has acquired tooth and claw paper shredding skills, too, and is learning how to ring the front desk bell. He rang it with one paw once and gave everyone in the office a really good laugh. Now he's working on phone skills. If a cat answers instead of me, you may have to work really hard at convincing him to go and find a human for you!

Memberships and Triennial Registrations continue to flow in. There are a huge number of membership packets that need to be prepped and shipped, so please be patient about getting your packets and pins. (A big thank you goes to Luke Connor's mom who helped me get some of them mailed out.) You may begin using your membership as soon as your payment clears. You do not need to wait for your packet to begin using your membership.

For 2018, there are presently 461 memberships with a total of 881 members including all primary members and the members of their families. There are over 800 people and 350 or more trains registered for the 2018 Triennial Meet. All of these numbers are still growing, so keep tuned!

Upcoming in April are Kitsap work week, and then the Spring Awakening work week and meet. It will be great to see those who are coming then!

Joyce

2/22/2018

# SQUIRRELBUSTERS

Your Train Mountain Library staff (aka “squirrelbusters”) showed up last week in their jumpsuits ready to do battle with local squirrels which were visiting the library and leaving unwanted deposits everywhere in the attic/storage areas. In short order busters equipped with the most up-to-date goggles, blowers and proton packs were able to remove unwanted materials and spread moth balls as deterrent to any future invasion or apparition.

Library Staff



**Sabra organizes the Library**  
She has invited everyone to come and visit the Library

# I AM NOT A ROBOT!

There have been a few changes made to the member's site, specifically where payment information is entered. The most noticeable change is that we have added a question asking if you are a robot. You check the box and depending on a bunch of things, you may be asked to choose from a set of pictures. You may be asked to click the pictures that show street signs, or click on pictures that show store fronts. It seems silly, but the questions and challenges are carefully crafted and updated by Google, and have an amazing success rate at determining if the entity pressing the keys is a real person or a computer program ("robot") trying to gain access.

The technology is called "CAPTCHA", or in our case "reCAPTCHA" and is quickly being the standard for online protection against robots, which pose a real problem to web sites. This is replacing the (to me) very irritating practice of trying to figure out what letters and numbers they are showing in fuzzy text. If you have questions or problems getting around the new challenge (or if you are a robot!), feel free to give Joyce a call in the office.

Dale Furseth

"the computer guy"

## Volunteer Hours Reporting

Dale Furseth has worked his techie magic on the member's part of our website again. You can now report your monthly volunteer hours online. From the Train Mountain Railroad home page, click on "Online Member Resources: Join Train Mountain: "Register for Meets", then on "Enter Volunteer Hours" or go there directly with this link: [https://trainmtn.org/tmr-members/Member\\_VolunteerHours.aspx](https://trainmtn.org/tmr-members/Member_VolunteerHours.aspx)

Choose your name from the drop down menu, enter your total hours in the box that matches the month you are reporting your hours for and click on "Update Information" to submit them. So-o-o simple! We hope you enjoy using this new feature.

**Please submit your volunteer hours. If you work off site or at home on Train Mountain projects - these hours count.**



**REMEMBER: No job is complete without the paperwork!**



# Train Mountain Volunteer Hours

Name: \_\_\_\_\_

Month & Year: \_\_\_\_\_

Date	Project(s) Worked On	Number of Hours
Total Hours		

# WEB-CAM GALLERY

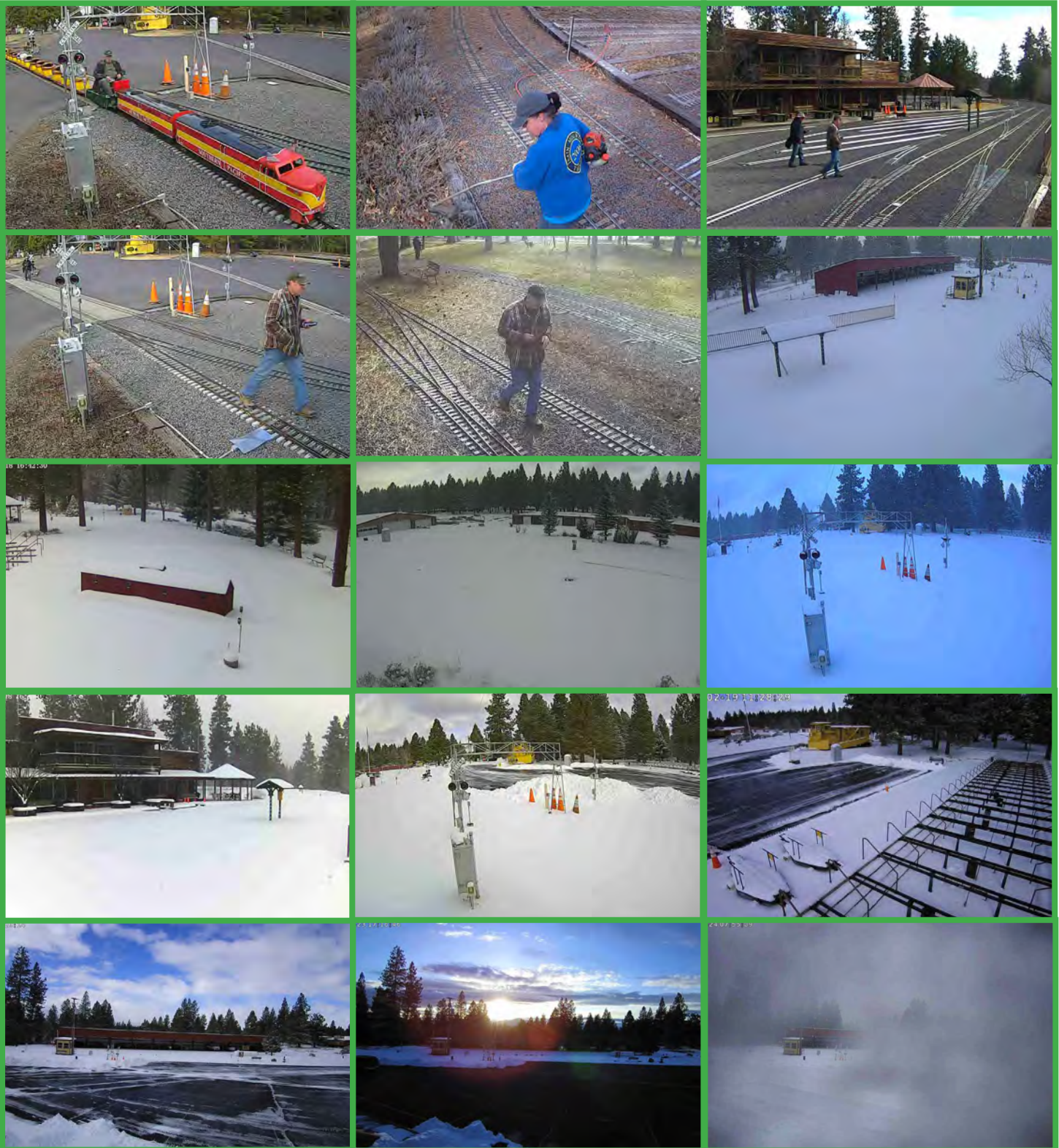
Photos by: The Web-Cam



Please Use the Online App to Register or Join-- <https://trainmtn.org/tmrrmembers/>

# WEB-CAM GALLERY

Photos by: The Web-Cam



Please Use the Online App to Register or Join-- <https://trainmtn.org/tmrrmembers/>

# NOTICES

## PUBLICATION DEADLINE:

Submissions to the Gazette must be received by the 15th of the month of publication. The fifteenth of the month is to be the last day to submit material. Material received after the 15th of the month may be held until the following month or rejected.

## SUBMISSION CRITERIA

Articles and ads may be submitted via a pdf file, MS WORD, Open Office, notepad, or similar text file. Please give each article a distinct file name with your name a date. If everyone submits an article named "article for gazette" or something similar it could get overwritten by another article with the same name.

Please use a common open source FONT such as ARIAL that can be displayed in all Browsers, and is easy to read. Please do NOT use the Calibri font, as we must take the time to convert it to Arial.

If your document has an embedded image, you must also include the image separately as a jpg, png, or similar image file.

## Gate Code

Due to security concerns, the Gate Code for the Train Mountain Main Gate may be changed at any time without notice. Any Member planning to arrive at Train Mountain when the Office is closed will need to contact the Office prior to arrival to ensure they have the current Gate Code.

## Visitors to Train Mountain:

Train Mountain is very popular and is continually attracting visitors from throughout the world. We announce that our hours are from 10:00 AM until 3:00 PM Monday through Friday during the summer, and 10:00 AM to 2:00 PM during the winter. The office is closed on weekends except during meets, and then only when volunteers are available to open the office.

Our insurance advisors request that all people (members and visitors) complete and sign a liability release. If **YOU** as a member encounter visitors on the property without a visitors pass please direct them to the office so that we can insure that a release has been completed and a visitors pass has been issued.

If **YOU**, as a member, open the gate and allow visitors to pass through - **YOU** are responsible to see that the release has been completed, and **YOU** are liable for them until they sign a release. Releases are available in the mailboxes near the office for those times the office is closed. There are also releases available in the kitchen and in the back shop.

***If you do not want to, or do not have the time to, ensure that the releases are completed*** - then please graciously explain that the train park is closed to visitors and that the open hours are normally (Winter - 10:00 AM until 2:00 PM)(Summer - 9:00 AM until 3:00 PM) Monday through Friday. To arrange other hours visitors should call the office at 541-783-3030.

**Join Train Mountain now!!**

Please Use the Online App to Register or Join-- <https://trainmtn.org/tmrrmembers/>

## **Train Mountain is a NO SMOKING Facility**

**During recent events, many Members and their Guests have been ignoring this policy. There are only three designated smoking areas at Train Mountain:**

- (1) Outside the front of the Backshop**
- (2) Outside the east door of the Hall of Flags**
- (3) Outside the Motor Pool (Maintenance Building)**

**Due to the high fire danger at Train Mountain during the summer, we have zero tolerance for anyone smoking outside one of the designated areas.**

**There is NO SMOKING anywhere out on the track!**

**Members, Guests, and Visitors that continue to violate the Train Mountain Smoking Policy may be asked to leave.**

### **IN MEMORY OF ART CRISP**

On April 20, 2018, at 10 am, Art Crisp will be laid to rest at the Veterans' National Cemetery in Eagle Point Oregon with full military honors. On April 21, 2018, at noon, a Memorial for Art Crisp will be held at the Flag Pole at Train Mountain.

**Join Train Mountain now!!**

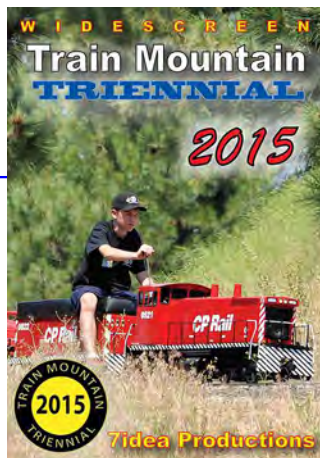
**Please Use the Online App to Register or Join-- <https://trainmtn.org/tmrrmembers/>**

# CLASSIFIEDS



## 2015 Triennial Video is available now!

The 2015 Train Mountain Triennial video from Aaron Bentsen at 7Idea Productions is now available through the [Train Mountain on-line store](#) or the main office at Train Mountain. Give them a call at 541-783-3030 and get a copy on the way to your place. It's \$29.95 for the video and free shipping and handling lower 48, \$6 S&H for all others. A most enjoyable video shot by a true video artist and of course our favorite subject, Train Mountain!



Our good friend Jim over at Discover Live Steam has placed ads for us on his terrific website, thanks Jim. [discoverlivesteam.com](http://discoverlivesteam.com)

Did you see the great article and front cover story from the November / December 2015 issue of Live Steam and Outdoor Railroading? It is a great article covering the 2015 Triennial. and the great gang of folks that hang around the place and put on terrific live steam train meets. Pretty cool! [web: livesteam.net](http://web:livesteam.net)



**Donations\$ Needed!**

### HAVE SOMETHING YOU WANT TO SELL?

Place an ad in the Gazette!  
 1/8 Page: \$25/month or \$250/year  
 1/4 Page: \$40/month or \$400/year  
 1/2 Page: \$70/month or \$700/year  
 Full Page: \$125/month or \$1250/year

Published by Train Mountain Railroad  
 P.O. Box 438  
 Chiloquin, OR 97624  
 Email: [info@tmrr.org](mailto:info@tmrr.org) Phone: 541-783-3030

Contributors: TMRR BOD, Friends, TMI  
 Photos: Tom Watson



**Join Train Mountain now!!**

Please Use the Online App to Register or Join-- <https://trainmtn.org/tmrrmembers/>



Located only 1.5 miles off Hwy 97 in Downtown Chiloquin in the same building as the Post Office  
212 1st Avenue, Chiloquin, OREGON 97624 -- Phone: (541) 783-0988



## What is Amazon Smile?

In a nutshell, it is a way for Train Mountain to receive 501c3 donations from Amazon.

According to Amazon: AmazonSmile is a simple and automatic way for you to support your favorite charitable organization every time you shop, at no cost to you. When you shop at smile.amazon.com, you'll find the exact same low prices, vast selection and convenient shopping experience as Amazon.com, with the added bonus that Amazon will donate a portion of the purchase price to your favorite charitable organization. You can choose from nearly one million organizations to support.

When you go to Amazon Smile, choose Train Mountain Institute as your charity. In order for this to work, you must always start from Amazon Smile. Then all else is the same, your account, wish lists, etc. Also available is a direct link: <http://smile.amazon.com/ch/27-4031025> for the TMI account.

The AmazonSmile Foundation will donate 0.5% of the purchase price from your eligible AmazonSmile purchases. I found that just about everything I purchased lately is eligible.

If we can get a large number of Train Mountain supporters to take advantage of the Amazon Smile program, this could result in sizable donations to Train Mountain.

[Click here for more information.](#)



## Kla-Mo-Ya Casino

34333 Hwy 97 N  
Chiloquin, OR 97624  
541-783-7529 or 1-888-KLAMOYA  
[www.klamoyacasino.com](http://www.klamoyacasino.com)

Kla-Mo-Ya Casino opened in 1997 and is owned and operated by the Klamath, Modoc and Yahooskin Tribes. Set in the beautiful pines of Southern Oregon, we are located on Highway 97 near the junction of Highway 62 (Crater Lake Highway).

We are open 24 hours a day, 365 days a year, and welcome travelers and groups from across the country year round.

Our Peak to Peak Restaurant is open 24 hours a day, with a full service lounge and beverage service available out on the gaming floor. Choose from great menu items like juicy steaks, classic salads and pastas, or try our beefy Triple 7 Burger if you are *really* hungry. Dine in or take out, we have a host of friendly staff to serve you. Check out our current menu from the Dining page of our website, and watch for monthly special features. The Peak to Peak restaurant welcomes groups, meetings or parties for special occasions.

Open from 7am to 9pm, the Espresso Bar serves a wide variety of espresso and coffee drinks, hot or cold, as well as fruit smoothies, frozen yogurt, desserts, and quick to-go lunches.

Our gaming floor has 344 slots with new games and themes being brought in all the time. Find out about our current slot promotions and check out recent jackpot winners on our website and Facebook page.

Try your hand at one of our four Blackjack tables. We offer double deck and six-deck blackjack with \$3 tables available every Monday. Keep up with promotions and tournaments available by checking our website.

Hours of operation:

Weds & Thurs: 12 noon – 8pm

Friday through Sunday: 12  
Noon – 12 Midnight

(closing times may vary depending on play)

Stop by the Bonus Club to sign up for a free membership card to earn rewards and qualify for our many promotions and giveaways. While you are there, browse through the unique selection of items in our Gift Shop.

RVers, Truckers and large vehicles are always welcome, with plenty of free overnight parking available. Stop by the Bonus Club to ask about discounts and perks.

Come enjoy the warmth and excitement of Kla-Mo-Ya casino.



**Join Train Mountain now!!**

Please Use the Online App to Register or Join-- <https://trainmtn.org/tmrrmembers/>



## **Crater Lake Junction Travel Center**

34005 Hwy 97 N  
Chiloquin, OR 97624  
541-783-9800

The Crater Lake Junction Travel Center opened for business in 2010, and is owned by the Klamath, Modoc and Ya-hooskin Tribes. Open 24 hours a day and located just next door to Kla-Mo-Ya Casino as you enter, this travel center offers competitive fuel prices and many convenience items.

Travelers can fuel up with gas, diesel, or propane. Stop in for a snack or soda, or grab a quick meal featuring Mexi-Go or Mountain Fresh Pizza. Free Wi-Fi, a comfortable lounge with large screen TVs, laundry and shower facilities, and ATMs are all available.

Make sure to ask for a Crater Lake Junction Travel Center rewards membership card so that you can earn points for each purchase and visit. Your earned points can be applied toward future purchases.

Truckers, ask about trucker services and benefits for each visit. Convenience items and truck accessories are for sale, along with many useful daily provisions.

### **Crater Lake National Park**

Crater Lake National Park is located off Highway 62, just 34 miles from Kla-Mo-Ya Casino and the Crater Lake Junction Travel Center. After playing and fueling up, discover the world-famous beauty and amazing history of Crater Lake. Groups and parties, ask about casino shuttle service for your outing or adventure.

### **Shuttle Service to and from Train Mountain**

Kla-Mo-Ya Casino and the Crater Lake Junction Travel Center are also offering a free shuttle service for Train Mountain Members, Guests and Visitors.

Train Mountain people should see the TM Office for more details, schedules, and special events.

**Join Train Mountain now!!**

Please Use the Online App to Register or Join-- <https://trainmtn.org/tmrrmembers/>