



# The Mountain GAZETTE

© Copyright 2017, Train Mountain Railroad

An Official Publication of the Train Mountain Railroad - Issue: Vol. #3 Issue #56 **March 2018**

## Signs of Spring

March brought the type of weather we didn't have in December through February. Now that the end of March is near, we are finally almost snow free. The sun came out this week, and both visitors and volunteer workers have appeared. It's not exactly warm yet, but at least it's dry.

The Signal crew is working on finishing the Central Station Yard. There will be many new signal changes to accommodate the new options for the yard. John, Dave, and Dick, have been working for about five days now. Other projects are also beginning, but no pictures. Leonard is making new mile posts, Gil is repairing equipment and other broken things. Boyd and Bert are doing equipment maintenance. Charlie Bill continues to build track and switches with help from Bill Dobbs, Dave, Leonard, and others. Jim and Sabra are working on Library projects and more.



**Join Train Mountain now!!**

Please Use the Online App to Register or Join-- <https://trainmtn.org/tmrrmembers/>

## **Before you leave the house!** by Dale Furseth

I have been a member of Train Mountain for a few years, and always love running my train there. However, nothing can spoil a long-planned trip like forgotten items. You always remember the big stuff (locomotive - check, riding cars – check, spouse - check), but it is the little stuff that can hang you up and spoil the fun. Here is my list of things I always make sure to bring. I decided to post this now since some of you may be starting to plan for the Triennial – and this might help your planning. I will probably post this again later.

### **IMPORTANT STUFF**

If I am planning on running north side in the summer, I need to make sure I have Forest Service required/recommended stuff

Shovel (like Harbor Freight #69826)  
Axe (like Harbor freight #66059)  
Water – preferably in something that can be sprayed

### **IF I AM RUNNING ANYWHERE,**

FRS Radio (like Walmart #555612239 - only one is required per train but it would be nice if your conductor had one too)  
Fire extinguisher (like Home Depot #1002763585)  
Safety chains between all rolling equipment (not doggy chains but real chains)  
Whistle (police type)  
Red flag (10"x10" on a stick)

### **IF I AM RUNNING MY PROPANE FIRED STEAMER**

Current boiler certificate - Yes I can get a boiler check at TM, but if it is a large meet (like the Triennial), it may take some time, and who wants to waste run time! A current boiler certificate is required to run a steam engine at Train Mountain.  
An extra-long propane connection hose if using a Train Mountain tank car for your reserve supply.

### **IF I AM GOING TO RUN AT NIGHT**

Red light for your rear car  
Working front-facing light

### **IF I AM RUNNING AT A REALLY LARGE MEET (Like the Triennial)**

PATIENCE  
Sense of humor!

### **STUFF THAT MAKES THE TRIP MORE FUN**

Sun screen - the UV index is always high in the summer and you tend to burn fast  
Water for you and your passengers - it is a dry environment because of the altitude  
Bug spray - bugs love me, so I always remember my bug spray  
Band-Aids - yep - I get scuffed pretty frequently and they are nice to patch me up

Extra safety chains - I think big foot comes and picks mine up when I drop them  
Flashlight - it gets DARK at night (and batteries)  
Camera - for pictures of new friends, remember if there are no pix it didn't happen!  
Extension cord – at least 25 ft and heavy duty enough for YOUR charger  
Folding chair - I can't stand up all day anymore  
Batteries - this just seems like a good idea (see flashlight).  
Hat - like I said earlier - the sun is brutal and your head is closest to it, and burns the fastest!  
Bring an ample supply of your meds!

Bottled water – lots or you can buy it onsite

Trash bags – use em' and leave them inside the proper trash containers or better yet take them with you

## **RANDOM INFORMATION**

The Wednesday night of the 2018 Triennial week is a full moon. It will be most likely be a beautiful evening, and the full moon makes for spectacular night running. There are three grocery stores and a hardware store in Chiloquin. The big box stores and any auto servicing are 30 miles away.

## **It is a Railroad After All!**

So here's the deal, we don't want to say 'NO you can't come' to anyone that wants to come to the Triennial, right?

As of March 20, 2018 we are out of room for fully assigned trains (engines and rolling stock on same track).

So in order for Train Mountain to continue to take Triennial Registrations, some of US may have to park our engines one place and our rail cars someplace else.

So when WE get ready to go out on the railroad WE just might have to go and get OUR train, right? It is a railroad after all; so why not run it like one.

Seriously, we want everyone to be able to come and enjoy the meet. So in order to facilitate that desire we may split up some of the trains so that we can park your engines where convenient and your rail cars on the longer storage tracks on the west end of the Back Shop. If you have already registered for the Triennial we MAY contact you and get your permission to split your train. If you haven't registered yet, please note on your form if it is OK to split your train.

Sounds like fun and a workable plan to me!

This move is what is required to get more folks assigned to parking tracks and not have to say NO to anyone.

# Fun

noun

**noun: fun**

1. enjoyment, amusement, or lighthearted pleasure. “the children were having fun in the play area”

synonyms: enjoyment, entertainment, amusement, pleasure; More jollification, merrymaking; recreation, diversion, leisure, relaxation; a good time, a great time;

informal:

rest and recreation, R and R, a ball

“I joined in with the fun”

•merriment, cheerfulness, cheeriness, jollity, joviality, jocularly, high spirits, gaiety, mirth, laughter, hilarity, glee, gladness, lightheartedness, levity “she’s full of fun”

**adjective: informal**

**adjective: fun**

1. amusing, entertaining, or enjoyable. “it was a fun evening”

synonyms: enjoyable, entertaining, amusing, diverting, pleasurable, pleasing, agreeable, interesting “a fun evening”

Train Mountain should and does serve many purposes. We are a railroad museum showcasing a large collection of railroad artifacts big and small. We are the largest outdoor hobby railroad. We introduce the hobby of ‘live steam’ or riding scale model railroading to many folks. The most important function we ‘should’ serve however is a great place for our members and guests to come and have some FUN!

Whatever you do when you come here please plan on having some fun.

Please remember to take your meds; we don’t need to see the ‘other side’ of you! 😊

One of the enjoyable things I do is to leave my train parked for a while and I join in the fun as a passenger or crew on another members train. Spend some time in the yard or steaming bays looking at other members ‘stuff’. We have some incredibly talented members with some really clever ideas. Ask questions, I can’t think of a single member who doesn’t like to talk about *their* stuff! If you are getting hungry and have a vehicle, ask around and see if anybody wants to join you. If you have some guests with you, remember to introduce them around to the other members. If you talk to someone long enough his or her paths have crossed somewhere back in time.

Lastly remember the gathering of the clan at 4:30 in the backshop (we have a soda machine for the non-drinkers).

We really want everyone to come expecting something special and to leave with something special, a great big smile!

## Kitsap Work Week 2018

The Kitsap Work Week will be April 7<sup>th</sup> Through April 13<sup>th</sup> this year. We will be working on various projects in anticipation of the 2018 Triennial. Jerry Crane will be the Volunteer Coordinator for this work week and we will hold the usual morning volunteer meetings to assign volunteers to various tasks.

The local residents look forward to this work week as it is a sure sign winter is over and they can recover from winter's cabin fever.

You do not have to be a KLS member to participate in this work week, all volunteers are welcome. This is a great time to come to Train Mountain and volunteer **without** having to **pay a meet fee**.

If your group wishes to create their own work week, please contact the Train Mountain Office with 3 of the 4 "W"s; who, what and when. We know the "where", so be there!

## Train Mountain on Oregon Public Broadcast Links

The new segment on Train Mountain and other Oregon destinations was aired in their Thursday, November 9<sup>th</sup> broadcast of Oregon Field Guide.

You can now view the entire segment directly on the opb.org website here:  
<https://watch.opb.org/video/3006578129/>

OPB has made the Train Mountain part of the broadcast available on Facebook,  
and can be viewed without being a [Facebook member by clicking here](#).

# HIGHBALL for Operations Fun

By John Lovely

Operations Meets are like working a giant jigsaw puzzle. There are differences between passenger and freight operations that make each interesting. Here is a little chart of the differences.

Passenger	Freight
Timetable sets Time	You set your time
Route is set	You choose your route
Load manifest changes each station	Manifest set ahead of time
Priority use of track	Yield track to other trains
Conductor gets exercise bending down for passengers	Conductor and brakemen get lots of exercise walking, coupling/un-coupling
Consist of cars static	Consist of cars changes
Challenge is running on time and accounting for passengers	Challenge is efficiency of movements (unless you want to just ride around the RR)
Good for small engines, short trains, even rail bikes	A powerful engine may be needed to pull your train up the hills
The paperwork can get intense	Paperwork is leisurely

Both modes are fun and challenging. I urge everyone to try both.

We have a new track plan at Central Station this year. I will have to figure out the best way to use it for passenger trains when I attend Triennial. I think we will want to stage our trains on the spurs as best we can. It will mean you have to plan ahead to get your train moved to the correct track in time.

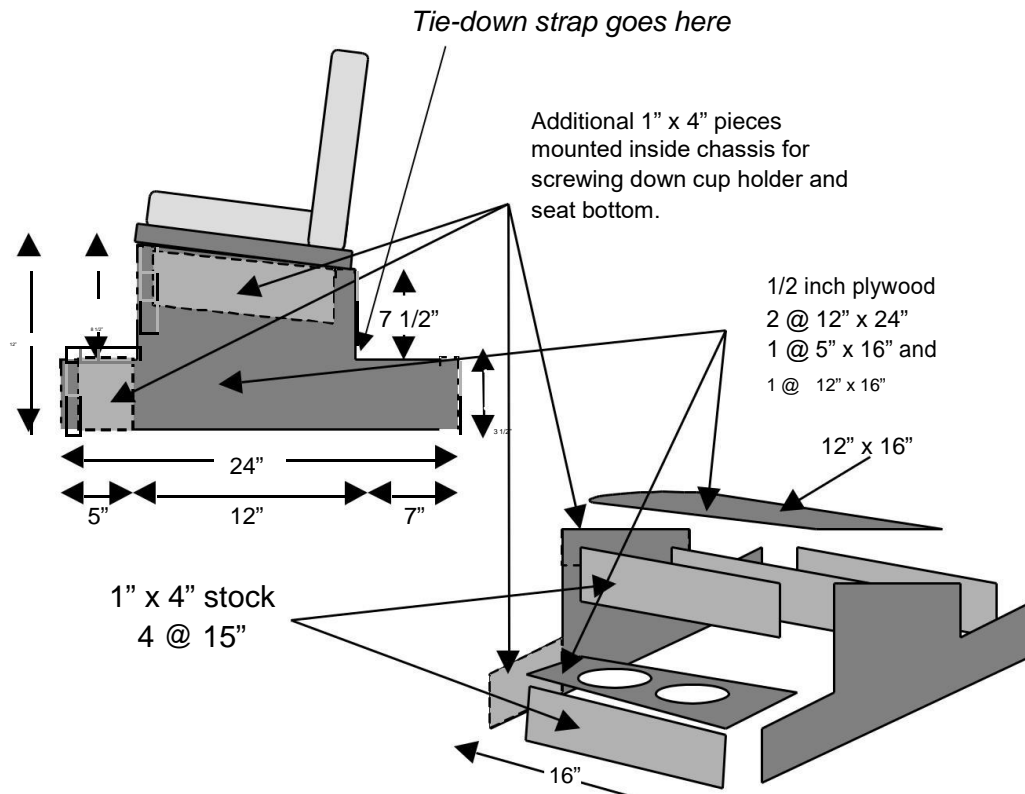
Three items that we can't stress enough for safety: 1. Monitor your radio, always have someone listening that can respond and relay the message to the engineer and conductor. Passenger trains will call times as they leave each station. Freight trains will need to get "authority" to make each move. 2. Switch position – close all main track switches before you leave a station. We may have you report switch positions to dispatch before you are authorized to move to your next station. Of course, route selection switches are always aligned for main track, but maybe not your intended route. 3. Flag protection – You need to protect your train against following trains on main track. Even though passenger trains are exempt from flagging while stopped at a station (effectively *yard limits*) they still need to flag if stopped at other places. The flagman may be the first person to recognize a passenger train that needs clearance.

From what I have learned in the press: the latest Amtrak wreck illustrates the need for switch position awareness. The siding switch was reportedly aligned and reported according to the rules. But the person doing so had it wrong. When we did our SPAF (switch position awareness form) at GCR, it was supposed to be verified by two people: the brakeman and the conductor.

I'm looking forward to another fun week after the frenzy of Triennial has worn off. See you there.

## Riding Cars During the Triennial

What will work for the Train Mountain Triennial is having plenty of riding cars for all those great engines that show up. The Problem is, there just aren't enough. The problem is compounded by the fact that if we make them 'permanent' riding cars where do we store them. Additionally the problem for those of you that are hauling in trains from long distances, bringing lots of riding cars is out of the question. So how about making some portable seats that fit the Train Mountain rail flat cars? You know all those great rail cars that we have for hauling around the track panels? We can all build some portable seats that fit within the dimensions of those cars. You see, those cars have a small lip of about 1/4" that sticks up on the edge of the flat car to hold the track panels from sliding. If we build some portable seats that fit within the maximum width of 16 inches they will be held in place by that lip. Here is my suggested plan and a photo or two of my prototypes. To 'fasten' them to the flat car for safety reasons you simply use one of your strap tie-downs and 'wrap' it around the flat car and over the back lip of the portable seats. It works great, they are very stable and comfortable even after a long two or three hour ride!



Upper left shows the screwed together model. The unpainted version is the portable take apart version. The photo on the bottom far right shows all the pieces. The pieces are all the same regardless of which version you build. Total cost is under \$120 for a three seat per flat car riding car. The economy boat seats are from Walmart at around \$30 each and the 1/2 inch plywood was \$20 per sheet. I get four frames per 4 x 8 sheet.



Here are some additional notes as the direct result of using these portable seats: The height can be anything from the lowest, like Train Mountain's riding cars, which are 5 inches high at the front edge of the seat, to my height of 12 inches to the front edge of the seat. Both the Train Mountain version and my versions have a 1/4 inch differential between the front edge and the back edge. Note: We have tried various angles, too much angle and the riders lean back and break the seat backs. Train Mountain switched from a 12" seat to a 5" seat to lower the center of gravity to make for a safer ride. You might want to do the same. I think my next two will be eight inches high at the front edge. Remember safety - safety - safety!



A different kind of seat belt! It does work good though, very stable, and easy to get up and down!



# The Pulaski Fire Tool

By Jeff Mills

There has been some recent inquires on the Pulaski Fire tool; this article should answer these questions and provide additional information on this important fire tool and its use.

## History:

Summer of 1910 saw the largest forest fires in modern history. Over three million acres of virgin forest lands were burned that year in Idaho. Big Ed Pulaski, one of the original US Forest Rangers, was in charge of a 45 man crew working in a fire in South West Idaho. His crew was surrounded by fire and escape was not immediately obvious. Big Ed was familiar with the area of Placer Creek Idaho and knew of some mine shafts. He directed his men to go into one of the mine shafts. When they refused he had 45 panicked men to save. At gun point he forced the men into the mine shaft. Deep in the mine they were safe from heat of the fires outside. However the oxygen became depleted and all the men passed out. Early the next morning the men started to wake up amazed that they survived, but Big Ed was still unconscious being closest to the mine entrance. The men stepping over Big Ed revived him to lead his crew back to town.



After that fire season Big Ed saw the need for a more effective tool for firefighting. All the existing tools were specific to one task be it chopping, digging or grubbing. This required one man to be able to perform only one task or carry multiple tools neither being very efficient. Having previous blacksmith experience he welded an adz blade to the flat end of a single bit ax. Now he had a tool that could chop wood, cut brush, dig up roots and trench without changing tools. The rest is history as the tool became known as the Pulaski and used around the world as a primary wild fire fighting tool. The TV show Mysteries at the Museum has a short video of this story. Look for Season #6 Episode #3 online.

## Proper Tool Handling:

Carrying the Pulaski, your hand should grip the handle a few inches from the head with ax blade down. Always carry a fire tool on the downhill side of your body. In case you fall drop the tool and it will be drawn downhill by gravity away from your body. When carrying or using fire tools 10 foot spacing between crew members should be maintained. **Never carry a fire tool on your shoulder.**

## Use of the Pulaski:

The ax blade can be used for chopping trees, cutting brush or limbs off of trees. It is most effective with cuts at 45 degrees to the grain of the wood. The adz blade can be used for loosening up soil for stock piles to throw on a fire with a shovel, trenching the fire line to prevent rolling material from crossing the fire line and digging up roots and small stumps in the fire line.

## Specifications of the Pulaski:

The ODF and US Forest Service recommend the minimum specifications of the Pulaski to have a head of 2.5 pounds and a handle of 26". The most commonly found Pulaski's (i.e.; Harbor Freight) have a 3.75 pound head and a 34" handle which exceeds the minimum specification.



**Thanks to Big Ed Pulaski we have a proven multiple use fire tool.**

## Meet the Triennial Steering Committee

As attendees of the 2018 Triennial you need to know who is planning and running the event. This article will provide some basic biographical information on each of the members of the 2018 Triennial Steering Committee and what they will be doing. This events planning started the day after the 2015 Triennial was over with review of successes and areas that needed improvement. We are seeing a significant increase in the number of trains and attendees for this meet. We also expect to see an increase in Day Visitors.

In Alphabetical Order:

**Danny Chamrad:** Volunteer Coordinator 2018 Triennial, Member of TMRR since 2015. TMRR experience in raking and hauling forest debris, Track Shop, Track installation and repair, and meet Volunteer Coordinator 2017. Commutes 2174 miles from Victoria Texas and has only missed the Polar Bear Meets. Occupations: US Marine Corp., Dow Chemical Plant Incident Commander for emergency response.



Triennial Committee's Coordinated:

Camp Host 6 Acre, Camp Host Blue Caboose, Camp Host South Meadow, First Aid, Garden Railroad, Post Triennial Clean up, Shuttle Vehicle's, Trash Pick Up, Yard Master Main Yard and Central Station yard

**Jeff Mills:** Volunteer Coordinator 2018 Triennial, Member of TMRR since 2006. TMRR Experience: Current TMRR Board President, Past TMRR Board Vice President, TMRR Board Member, Fire Safety Committee, Have worked in all areas related to tracks, trains and infrastructure at TMRR. Triennial Committee chairs, Seminars 2006, Safety Video Viewing 2012, and Fuel Yard 2015. Graduated From OIT Klamath Falls 1973, Occupation 40 years Caterpillar Used Parts Manager, 6 years US Forest Service Fire Crew, Commutes 420 miles from Puyallup, WA and makes all the meets except the Polar Bear Meet.



Triennial Committees Coordinated: Back Shop Repairs, Boiler Testing, Equipment Rental, Fuel Yard, Safety Video Viewing, Track Repair Mobile North and South, and Triennial Office

**David Waterstreet:** Volunteer Coordinator 2018 Triennial, Member of TMRR since 2006. TMRR Experience: Current TMRR Board Treasurer, Volunteer Coordinator 2017, Signals, Communications and CTC. Commutes from Portland OR, 250 miles, makes all meets but Polar Bear Meet. Occupations: Retired US Air Force, DCC Electronics & Engineering



Triennial Committees Coordinated: Communications, Parking South Meadow, Signal Maintenance, Track Assignments, Train Inspections, Train Tours, Security, Arrival and Check-in

**Tom Watson:** Triennial Administrator, Member of TMRR since 2010. TMRR experience: TMRR Board Member, Past President TMRR Board 2012 to 2017, Volunteer Coordinator 2012 and 2015 Triennials, TMRR Gazette Editor, Website Administrator, and Web Camera Maintenance. Occupations: Retired Aerospace, Laser Research, Computer controlled sawmills, and Graphic Arts, Chiloquin Resident

Triennial Committees working directly with the TM Administration: Security, Arrivals Check In, Website, Train Mountain Office and Store, Triennial Office, Packet Preparation, Publicity.

Other Responsibilities: Arranges all contractors to provide services for TMRR and The Triennial, Makes all the ID Badges and administers all the Triennial Registrations.



**Russ Wood:** Triennial Administrator. Member Of TMRR Since 1996 and Life Member, TMRR Experience: Past TMRR Board Member and Secretary. Past Editor of the TMRR Gazette, . Track Work, Track Planning and engineering special parts for the track, sign maker, and a Chiloquin Resident.

Pre-Triennial duties: Triennial Signs, Triennial Program, Vendors, Assists Train Mountain Office Administration, Vendors.

Triennial Committees Chaired: Train Tours.

These members make up the 2018 Triennial Steering Committee and as you can see there are a great number of years of experience and expertise within this group.

The Steering Committee has been busy all winter however your help will be especially important during the upcoming work weeks. Please consider volunteering often.





## VENDORS COMING TO THE TRIENNIAL



As soon as a vendor signs up and provides us with a LOGO, we will add it to this list.

### PRECISION STEEL CAR

LARGE SCALE TRAIN CAR KITS, DETAILS, AND ACCESSORIES

### The Pike River Northern

Your suppliers for 1/6" scale locomotives and parts



### Live Steamer Parts, LLC

## Greetings from Joyce at the front office:



After a few blanketings of snow this month, we are supposed to be getting some warm 50's to 60's daytime temperatures this week. It sure is nice to see the sun shine and the beautiful blue sky.

Visitor traffic is beginning to pick up with the slightly nicer weather and I'm guessing some Spring vacationers. March visitors are from South Carolina, Oregon, Nevada, Texas, Nebraska, Wyoming and Washington.

Gosh! Just two and a half more months until the Triennial meet! 903 people are already signed up and more registrations are coming in. For 2018 we are now at 508 memberships with 928 members including family members. This number is also growing so watch for updates.

Membership packets are gradually getting done and mailed out. When you get yours, please be sure to read the Member Information Booklet. There is a lot of useful information in it. It has answers to a lot of questions you might have as well as some rules and various procedures you should follow. Even if you are a long time member, you should read it.

The Klamath Tribes Sleep Inn was surrounded with clear plastic wrap and scaffolding on the outside when I drove by a few days ago. I don't really know what that means other than maybe some exterior work is going to be done. If I see some change, I'll write about it next month. Predictions for this Fall, rather than Summer, are now being given for the grand opening.

Char and Jack are getting in more outdoor time now that the weather is being nicer. Char is teaching Jack critter chasing skills – or maybe he already has that out of instinct.

It might be a little late to mention this, but there a couple of things that can cause the online Triennial registration and membership processes to glitch and can either cause them to malfunction or to omit a name on the online roster. To prevent the glitches do not include any commas, periods or other symbols in names and addresses and use only your two letter state abbreviation or three letter province abbreviation in the "state" field. Basically, use symbols **only** in your email address. Hyphens are okay in your phone numbers. In any of the other fields, symbols might cause problems and entering your full state or province name can cause a circular go-round-get-nowhere trap on a Triennial registration. So, just avoid using symbols wherever possible except in your email address or phone number for online memberships and online Triennial registrations.

Just around the corner are the Kitsap work week, and then the Spring Awakening work week and meet. We hope to see you here!

HAPPY SPRING!

Joyce

3/27/2018

## From Train Mountain Library: (March 15, 2018)



After cleaning up storage area we discovered ten boxes of Quentin's college textbooks, as well as a large number of biographies, self improvement books, paperbacks, classics and general reading books. Boxes were on display in Hall of Flags for the last month, see photo, for anyone to peruse and take with them. Books which remained were taken to the Good Will.



Staff is currently building a paperback bookcase to house Quentin's collection of paperbacks. It will be located under the kitchen windows in Hall of Flags for use by Triennial visitors. Feel free to take one or two and then also add to the collection.



We thank Jeff Mills for donation of several fine coffee table books on steam engines, and other train books that have been placed in the Train Mountain Library. The Library appreciates all donations of books. At this time we are not accepting most magazine collections due to lack of space.

Our intent has been to try and keep the Library neat and organized, yet, we have to agree with Lemony Snicket: "A good library will never be too neat, or too dusty, because somebody will always be in it, taking books off the shelves and staying up late to read them."

# I AM NOT A ROBOT!

There have been a few changes made to the member's site, specifically where payment information is entered. The most noticeable change is that we have added a question asking if you are a robot. You check the box and depending on a bunch of things, you may be asked to choose from a set of pictures. You may be asked to click the pictures that show street signs, or click on pictures that show store fronts. It seems silly, but the questions and challenges are carefully crafted and updated by Google, and have an amazing success rate at determining if the entity pressing the keys is a real person or a computer program ("robot") trying to gain access.

The technology is called "CAPTCHA", or in our case "reCAPTCHA" and is quickly being the standard for online protection against robots, which pose a real problem to web sites. This is replacing the (to me) very irritating practice of trying to figure out what letters and numbers they are showing in fuzzy text. If you have questions or problems getting around the new challenge (or if you are a robot!), feel free to give Joyce a call in the office.

Dale Furseth

"the computer guy"

## Volunteer Hours Reporting

Dale Furseth has worked his techie magic on the member's part of our website again. You can now report your monthly volunteer hours online. From the Train Mountain Railroad home page, click on "Online Member Resources: Join Train Mountain: "Register for Meets", then on "Enter Volunteer Hours" or go there directly with this link: [https://trainmtn.org/tmr-members/Member\\_VolunteerHours.aspx](https://trainmtn.org/tmr-members/Member_VolunteerHours.aspx)

Choose your name from the drop down menu, enter your total hours in the box that matches the month you are reporting your hours for and click on "Update Information" to submit them. So-o-o simple! We hope you enjoy using this new feature.

**Please submit your volunteer hours. If you work off site or at home on Train Mountain projects - these hours count.**



**REMEMBER: No job is complete without the paperwork!**





## 2018 Operations Meet

### Something for everyone

The Operations meet will start on Thursday, July 26<sup>th</sup>. And run through Saturday, July 28<sup>th</sup>. The fun will start with the workweek beginning July 21<sup>st</sup>, and end on Sunday July 29<sup>th</sup>. There is a meeting for volunteers every day during the workweek. These are generally set for 8:00AM.

There is always a need for volunteers at Train Mountain, and the Operations Meet is no exception. In addition to the regular chores at Train Mountain, On Monday of the workweek, we will need people to help with moving cars, inspecting them, and some sorting.

On Tuesday, we will need crews to complete the sorting of freight cars, and any additional inspecting.

Wednesday is the favorite activity of some, the initial spotting of freight cars around the railroad. This is a good chance to familiarize your crew with the railroad and get a first look at what switching cars is all about.

Thursday is when the real fun starts. At 9:00AM (immediately following the usual morning meeting) an orientation meeting will be held. All train crews should have at least one person in attendance. This is where you will learn all the details of how the meet will be run and receive timetables and other instructions. After the meeting, the freight crews can sign-up for their trains, and get their initial switch-lists. Passenger and excursion crews can sign-up and receive their train assignments. For those who want to try their hand at dispatching, sign-up sheets will be available for that. This is one of those activities that can be a lot of fun, and our dispatchers, really appreciate any help they can get. The operations will start at noon, and the tower and dispatcher should be on duty until 5:00PM.

Friday and Saturday, we continue operating, with the dispatcher and assistant train master desks manned from 8:30AM until 5:00PM

Sunday is pick-up day. Starting at dawn, we need crews to scour the railroad, and bring all the cars back up to the main yard. Other volunteers will be sorting the cars as they are brought back in, with priority being given to getting cars back to those who loaned them and are going home.

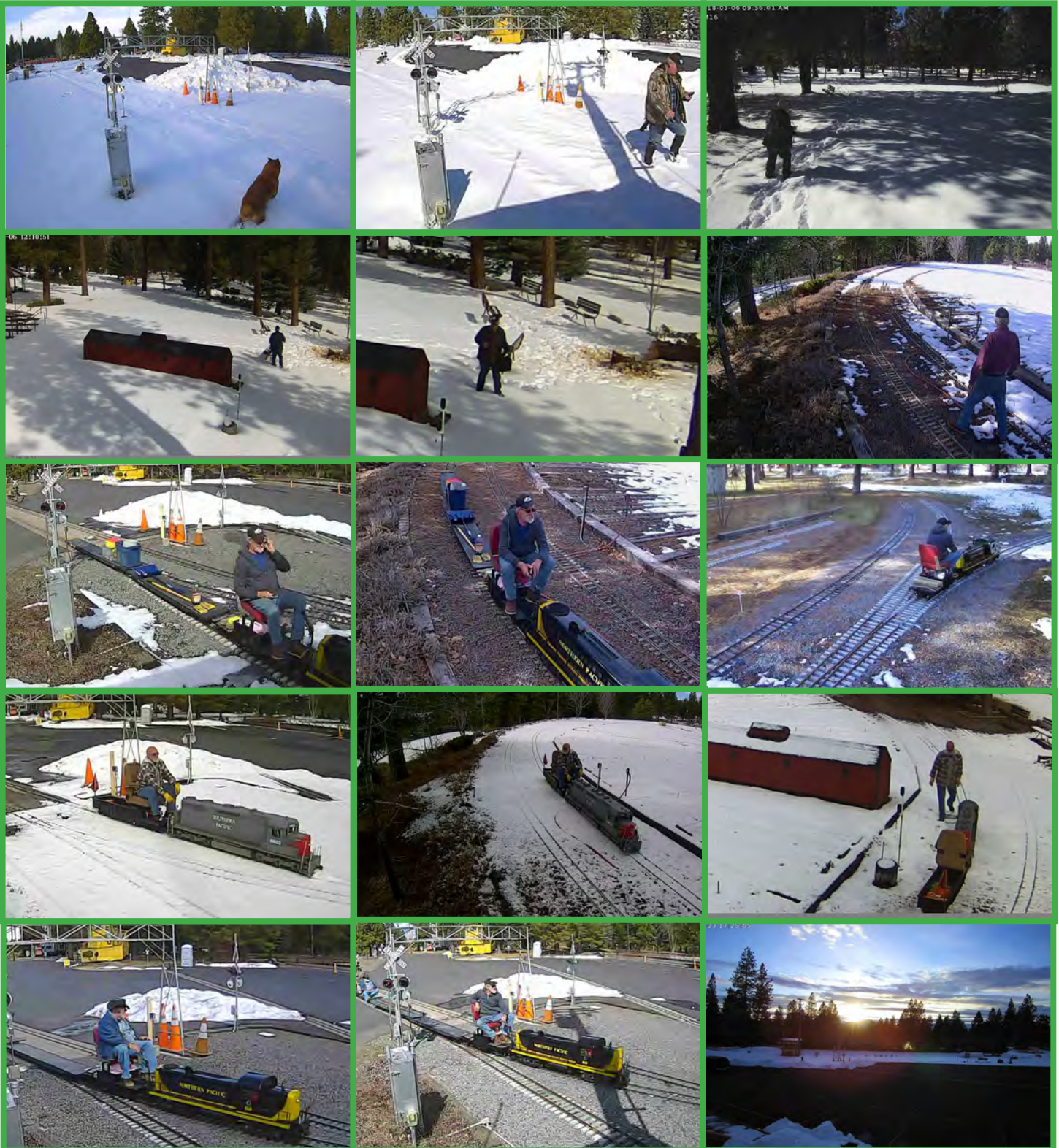
If you have any questions about the Operations Meet, please feel free to email Richard Croll, Trainmaster, at [rail-roc66@yahoo.com](mailto:rail-roc66@yahoo.com), or phone 510-227-9174. If you plan to bring cars to be switched, contact our Freight agent, Jim Armstrong, at [Armstrong.jandg@gmail.com](mailto:Armstrong.jandg@gmail.com), or by phone at 208-484-0073

We look forward to seeing you at the 2018 Operations Meet

Richard Croll, Trainmaster

# WEB-CAM GALLERY

Photos by: The Web-Cam



# WEB-CAM GALLERY

Photos by: The Web-Cam



Please Use the Online App to Register or Join-- <https://trainmtn.org/tmrrmembers/>

# NOTICES

## PUBLICATION DEADLINE:

Submissions to the Gazette must be received by the 15th of the month of publication. The fifteenth of the month is to be the last day to submit material. Material received after the 15th of the month may be held until the following month or rejected.

## SUBMISSION CRITERIA

Articles and ads may be submitted via a pdf file, MS WORD, Open Office, notepad, or similar text file. Please give each article a distinct file name with your name a date. If everyone submits an article named "article for gazette" or something similar it could get overwritten by another article with the same name.

Please use a common open source FONT such as ARIAL that can be displayed in all Browsers, and is easy to read. Please do NOT use the Calibri font, as we must take the time to convert it to Arial.

If your document has an embedded image, you must also include the image separately as a jpg, png, or similar image file.

## Gate Code

Due to security concerns, the Gate Code for the Train Mountain Main Gate may be changed at any time without notice. Any Member planning to arrive at Train Mountain when the Office is closed will need to contact the Office prior to arrival to ensure they have the current Gate Code.

## Visitors to Train Mountain:

Train Mountain is very popular and is continually attracting visitors from throughout the world. We announce that our hours are from 10:00 AM until 3:00 PM Monday through Friday during the summer, and 10:00 AM to 2:00 PM during the winter. The office is closed on weekends except during meets, and then only when volunteers are available to open the office.

Our insurance advisors request that all people (members and visitors) complete and sign a liability release. If **YOU** as a member encounter visitors on the property without a visitors pass please direct them to the office so that we can insure that a release has been completed and a visitors pass has been issued.

If **YOU**, as a member, open the gate and allow visitors to pass through - **YOU** are responsible to see that the release has been completed, and **YOU** are liable for them until they sign a release. Releases are available in the mailboxes near the office for those times the office is closed. There are also releases available in the kitchen and in the back shop.

***If you do not want to, or do not have the time to, ensure that the releases are completed*** - then please graciously explain that the train park is closed to visitors and that the open hours are normally (Winter - 10:00 AM until 2:00 PM)(Summer - 9:00 AM until 3:00 PM) Monday through Friday. To arrange other hours visitors should call the office at 541-783-3030.

**Join Train Mountain now!!**

Please Use the Online App to Register or Join-- <https://trainmtn.org/tmrrmembers/>

## **Train Mountain is a NO SMOKING Facility**

**During recent events, many Members and their Guests have been ignoring this policy. There are only three designated smoking areas at Train Mountain:**

- (1) Outside the front of the Backshop**
- (2) Outside the east door of the Hall of Flags**
- (3) Outside the Motor Pool (Maintenance Building)**

**Due to the high fire danger at Train Mountain during the summer, we have zero tolerance for anyone smoking outside one of the designated areas.**

**There is NO SMOKING anywhere out on the track!**

**Members, Guests, and Visitors that continue to violate the Train Mountain Smoking Policy may be asked to leave.**

## **What is Amazon Smile?**

In a nutshell, it is a way for Train Mountain to receive 501c3 donations from Amazon.

According to Amazon: AmazonSmile is a simple and automatic way for you to support your favorite charitable organization every time you shop, at no cost to you. When you shop at smile.amazon.com, you'll find the exact same low prices, vast selection and convenient shopping experience as Amazon.com, with the added bonus that Amazon will donate a portion of the purchase price to your favorite charitable organization. You can choose from nearly one million organizations to support.

When you go to Amazon Smile, choose Train Mountain Institute as your charity. In order for this to work, you must always start from Amazon Smile. Then all else is the same, your account, wish lists, etc. Also available is a direct link: <http://smile.amazon.com/ch/27-4031025> for the TMI account.

The AmazonSmile Foundation will donate 0.5% of the purchase price from your eligible AmazonSmile purchases. I found that just about everything I purchased lately is eligible.

If we can get a large number of Train Mountain supporters to take advantage of the Amazon Smile program, this could result in sizable donations to Train Mountain.

[Click here for more information.](#)

## **IN MEMORY OF ART CRISP**

On April 20, 2018, at 10 am, Art Crisp will be laid to rest at the Veterans' National Cemetery in Eagle Point Oregon with full military honors. On April 21, 2018, at noon, a Memorial for Art Crisp will be held at the Flag Pole at Train Mountain.

**Join Train Mountain now!!**

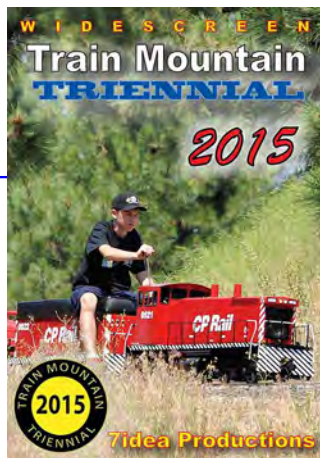
**Please Use the Online App to Register or Join-- <https://trainmtn.org/tmrrmembers/>**

# CLASSIFIEDS



## 2015 Triennial Video is available now!

The 2015 Train Mountain Triennial video from Aaron Bentsen at 7Idea Productions is now available through the [Train Mountain on-line store](#) or the main office at Train Mountain. Give them a call at 541-783-3030 and get a copy on the way to your place. It's \$29.95 for the video and free shipping and handling lower 48, \$6 S&H for all others. A most enjoyable video shot by a true video artist and of course our favorite subject, Train Mountain!



Our good friend Jim over at Discover Live Steam has placed ads for us on his terrific website, thanks Jim. [discoverlivesteam.com](http://discoverlivesteam.com) Did you see the great article and front cover story from the November / December 2015 issue of Live Steam and Outdoor Railroading? It is a great article covering the 2015 Triennial. and the great gang of folks that hang around the place and put on terrific live steam train meets. Pretty cool! [web: livesteam.net](http://www.livesteam.net)



**Donations\$ Needed!**

### HAVE SOMETHING YOU WANT TO SELL?

Place an ad in the Gazette!  
 1/8 Page: \$25/month or \$250/year  
 1/4 Page: \$40/month or \$400/year  
 1/2 Page: \$70/month or \$700/year  
 Full Page: \$125/month or \$1250/year

Published by Train Mountain Railroad  
 P.O. Box 438  
 Chiloquin, OR 97624  
 Email: [info@tmrr.org](mailto:info@tmrr.org) Phone: 541-783-3030

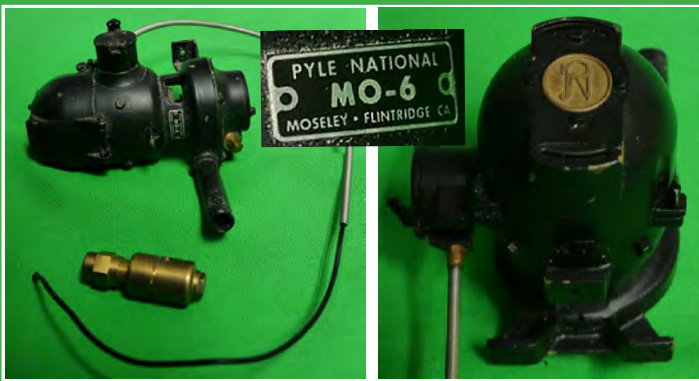
Contributors: TMRR BOD, Friends, TMI  
 Photos: Tom Watson



**Join Train Mountain now!!**

Please Use the Online App to Register or Join-- <https://trainmtn.org/tmrrmembers/>

# CLASSIFIEDS



**Pyle Steam Dynamo - \$1500**  
 One eight scale brand new replica  
 It runs on steam and generates enough  
 electricity to run your lights. It comes with a  
 regulator and original installation instructions  
 from 1982 by builder Francis Moseley.  
**Contact Al Taylor - 360-798-6753**  
[mralf2x@gmail.com](mailto:mralf2x@gmail.com)

**Meade 12" LX200GPS - \$2500**

**Schmidt-  
 Cassegrain  
 Telescope  
 with Autostar  
 II Hand  
 Controller.**

Tracking System does  
 not work, but may just  
 need tune-up or repair.  
 Have paperwork for  
 repair contact.

**Contact Al Taylor**  
**360-798-6753**  
[mralf2x@gmail.com](mailto:mralf2x@gmail.com)



Located only 1.5 miles off Hwy 97 in Downtown Chiloquin in the same building as the Post Office  
 212 1st Avenue, Chiloquin, OREGON 97624 -- Phone: (541) 783-0988





## Kla-Mo-Ya Casino

34333 Hwy 97 N  
Chiloquin, OR 97624  
541-783-7529 or 1-888-KLAMOYA  
[www.klamoyacasino.com](http://www.klamoyacasino.com)

Kla-Mo-Ya Casino opened in 1997 and is owned and operated by the Klamath, Modoc and Yahooskin Tribes. Set in the beautiful pines of Southern Oregon, we are located on Highway 97 near the junction of Highway 62 (Crater Lake Highway).

We are open 24 hours a day, 365 days a year, and welcome travelers and groups from across the country year round.

Our Peak to Peak Restaurant is open 24 hours a day, with a full service lounge and beverage service available out on the gaming floor. Choose from great menu items like juicy steaks, classic salads and pastas, or try our beefy Triple 7 Burger if you are *really* hungry. Dine in or take out, we have a host of friendly staff to serve you. Check out our current menu from the Dining page of our website, and watch for monthly special features. The Peak to Peak restaurant welcomes groups, meetings or parties for special occasions.

Open from 7am to 9pm, the Espresso Bar serves a wide variety of espresso and coffee drinks, hot or cold, as well as fruit smoothies, frozen yogurt, desserts, and quick to-go lunches.

Our gaming floor has 344 slots with new games and themes being brought in all the time. Find out about our current slot promotions and check out recent jackpot winners on our website and Facebook page.

Try your hand at one of our four Blackjack tables. We offer double deck and six-deck blackjack with \$3 tables available every Monday. Keep up with promotions and tournaments available by checking our website.

Hours of operation:

Weds & Thurs: 12 noon – 8pm

Friday through Sunday: 12  
Noon – 12 Midnight

(closing times may vary depending on play)

Stop by the Bonus Club to sign up for a free membership card to earn rewards and qualify for our many promotions and giveaways. While you are there, browse through the unique selection of items in our Gift Shop.

RVers, Truckers and large vehicles are always welcome, with plenty of free overnight parking available. Stop by the Bonus Club to ask about discounts and perks.

Come enjoy the warmth and excitement of Kla-Mo-Ya casino.



**Join Train Mountain now!!**

Please Use the Online App to Register or Join-- <https://trainmtn.org/tmrrmembers/>



## Crater Lake Junction Travel Center

34005 Hwy 97 N  
Chiloquin, OR 97624  
541-783-9800

The Crater Lake Junction Travel Center opened for business in 2010, and is owned by the Klamath, Modoc and Ya-hooskin Tribes. Open 24 hours a day and located just next door to Kla-Mo-Ya Casino as you enter, this travel center offers competitive fuel prices and many convenience items.

Travelers can fuel up with gas, diesel, or propane. Stop in for a snack or soda, or grab a quick meal featuring Mexi-Go or Mountain Fresh Pizza. Free Wi-Fi, a comfortable lounge with large screen TVs, laundry and shower facilities, and ATMs are all available.

Make sure to ask for a Crater Lake Junction Travel Center rewards membership card so that you can earn points for each purchase and visit. Your earned points can be applied toward future purchases.

Truckers, ask about trucker services and benefits for each visit. Convenience items and truck accessories are for sale, along with many useful daily provisions.

### **Crater Lake National Park**

Crater Lake National Park is located off Highway 62, just 34 miles from Kla-Mo-Ya Casino and the Crater Lake Junction Travel Center. After playing and fueling up, discover the world-famous beauty and amazing history of Crater Lake. Groups and parties, ask about casino shuttle service for your outing or adventure.

**Join Train Mountain now!!**

Please Use the Online App to Register or Join-- <https://trainmtn.org/tmrrmembers/>