



The Mountain GAZETTE

© 2020, Train Mountain

An Official Publication of the Train Mountain Institute and TM Railroad—Issue Vol. #4 Issue #20 April 2020

April

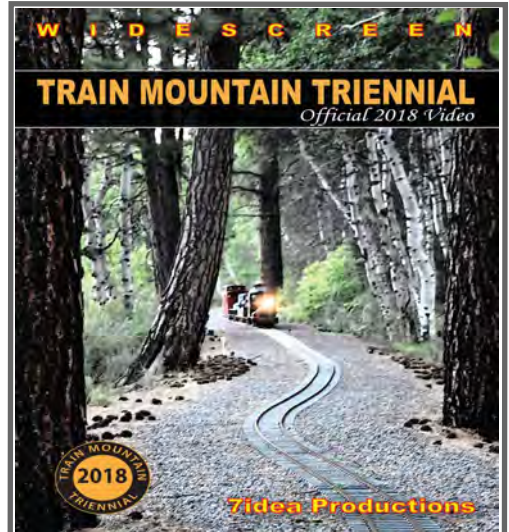
Usually this issue is devoted to all of the cool things our friends from up north, IE Kitsap Live Steamers, accomplished during their annual visit to help us get the park up and running. That of course is what we call Kitsap Week. Well nothing this year is as *usual*! The park is *closed*. Only the paid staff are on campus along with Tom to help secure and maintain the park.

Additionally we have had to cancel the annual Spring Awakening Work Week and Meet. Because the park is closed we have not got started on our annual rake/pickup routine. So once the park is back open we will need to do double duty to get the rails ready to run on. Only 30 or so days until the Narrow Gauge Work Week/Meet. We have had a mild winter so far but that does not mean that there aren't down trees, brush in the roads, and other winter *gifts* that need to be attended to. We should be close on our track panel supply but we are short some switches that need to be built once we can go back to work in the Track Shop. Boyd was busy getting the K&W fleet ready for their scheduled opening at the end of May. Now his work has also been curtailed until the Back Shop is open again. The reopening of course is dependent on all things pandemic.

We hope you all make it through this horrific ordeal in good health. We miss you all. Your health and that of your family is the most important. We will be waiting for your return.

It is hoped that we will be able to reopen the park soon. Having said that we all need to remember that even if we do reopen the park, the pandemic danger is still there and we should continue to be vigilant and to maintain some constraints regarding social distancing etc.

2018 TRIENNIAL VIDEO AVAILABLE NOW



Click Here to Purchase Online Or Go To:

<https://trainmtn.org/tmrmembers/videosales1.aspx>



Tick, Tick, Tick, Tick!

For local Lodging please go to our web site and click on Local Lodging. We think it's accurate as of last summer so if you call one of these folks, and they have changed or are no longer available PLEASE let us know.



Triennial 2021

Prep June 12th – 20th

Meet June 21st – 27th

Cancelation of Spring Awakening Meet 2020

By Jeff Mills TMRR President

Due to the Oregon State Required closures which are in effect through at least the first week of May. The Spring Awakening Meet will have to be cancelled. The Train Mountain Railroad Board of Directors will evaluate each upcoming meet to determine if or when a scheduled meet will be held. There may be the need to modify a meet's format. There may have to be no banquet or morning meetings. I will keep you informed on this as this pandemic unfolds. Please watch for announcements in the Gazette and Train Mountain's social media sites.

Refunds on paid meet fees. Meet fees are part of revenue that keeps Train Mountain running. It would be our sincerest hope that paid meet fees for canceled meets would be considered a **donation** to keep Train Mountain running. However, each individual's financial needs must be considered so Train Mountain will refund any paid meet fees upon request or apply paid meet fees to a future meet excluding the Triennial. All Meet Passes will be refunded on a pro-rated basis at the **end of the meet year**, upon request. At this time, on-line meet registration is still available. Keep in mind, additional meets could be canceled.

The closure of the Train Mountain Facility remains in compliance with Oregon State mandate with your personal safety utmost in our actions. We will get through this and eventually be able to resume these activities which have become a favorite part of our lives. **SAFETY FIRST!**



2020 Train Mountain Train Meet Schedule

	Polar Bear Train Meet	Spring Awakening Train Meet	Narrow Gauge Train Meet	Operations Train Meet	August Train Meet	Big Build Train Meet	Fall Colors Train Meet
Work Week	X	X	5/23 to 5/28	6/20 to 6/24	7/25 to 7/30	8/29 to 9/3	none
Meet	1/17 to 1/20	5/8 to 5/10	5/29 to 5/31	6/25 to 6/28	7/31 to 8/2	9/4 to 9/6	10/9 to 10/12

Join Train Mountain Now!

Register or Join - https://trainmtn.org/tmrrmembers/Member_Portal.aspx

Remote Train Operation at Train Mountain

By Jeff Mills, TMRR Board President

With the increased use of battery powered locomotives, we have seen an upsurge of remote-controlled engines. By this, we are referring to radio controlled or smartphone-controlled use. This type of control of a locomotive allows the operator to move a train while not being *physically* on or even near it. Concern has been raised regarding a runaway train resulting from the loss of an interfacing signal from the operator. Another issue has been discussed about the likelihood of an operator being a significant distance from his/her train and loss of control in that instance. The potential for a serious accident is considerable given the grades and length of trackage at Train Mountain.

The Train Mountain Railroad Board has discussed these concerns at length and have contacted several members with experience in remote controlled equipment for their input. Our investigation of "Shut-down at Loss of Signal" has proven there is not a uniform shut-down system which can be implemented in a consistent manner at this time. Additionally, most radio-controlled units are not designed for use in trains. The board's decision is to limit the use of remote-controlled engines rather than to try to legislate technology. The TMRR Board has approved the following rule be implemented.

Remote Controlled Trains Rules:

1. Remote operation of trains is to be limited to the following train procedures:
2. Entering and leaving a siding.
3. Coupling and uncoupling cars to make up a train.
4. Parking a train to be tied up and taken out of service.
5. Running a train in a yard to couple or uncouple cars to be dropped in a parking place or added to a consist.
6. Prepping to load or unload a train at Appendix or Crisp Yard and/or to turn a train around at the Ellingson turn table.



These remote-control operations are not to be performed in excess of 140' from the train, and only when both ends of the consist are in view of the Operator. All main line running must be done with the Operator riding in an engineer position on the train with the ability to stop the train in case of a remote-control failure. All Train Operators are responsible for the safe operation of their trains in order to prevent a run-away train.

The 140-foot distance was adopted because Quentin Breen is remembered as using this for remote train operation. He did not arrive at this arbitrarily. 140' is the maximum train length, 140' is the minimum siding length and 140' is the length of the Backshop at Train Mountain. This is a dimension we are familiar with so this new rule will be added to the "Train Mountain Policies and Procedures."

The TMRR Board agrees this is the fair way to proceed, at this time. As Technology advances, we will consider making changes to this rule. The Board does not intend to stifle innovation. We encourage growth within the hobby for the safety and enjoyment of its members and guests.



Join Train Mountain Now!

Register or Join - https://trainmtn.org/tmrrmembers/Member_Portal.aspx

Article Number Eight on “Understanding TM” By: Jerry Crane

As I stated in last month’s Gazette, we will be looking at our utilities for the next few articles. Last month it was our drinking and irrigations water system. This month we will look at the other end, so to speak, the septic system.

Understanding Train Mountain Septic Systems

Train Mountain gets rid of most of its sewage waste using septic tanks and drain fields. We operate these facilities under a Water Pollution Control Facilities Permit (No. 102774) issued by the Oregon State Department of Environmental Quality. Richard does the filing and inspections for the proper authorities on a regular schedule.

We have four active septic systems now in use.

The largest and newest system is for the Central Station. The system has four septic tanks, one lift station and one large drain field. The first tank in the system is located just south of the building under the lawn by the turn table. The next three tanks are across the service road from Central Station, south of the Vendor Shed. These tanks feed into a pump lift station next to the tanks that move the exit effluent to the large drain field behind the Vendor Shed. The electrical control unit for the lift station is located in the Vendor Shed. The drain field area must always be left undeveloped. This system is probably over sized and it may be possible to add more waste to the system in the future. The second system is for the Blue Caboose camping area. There is one tank and a drain field located in the track loop southeast of the Motor Pool. There are eight trailer dump portals located in the camping area that connect to this tank.

The third system is for the Motor Pool. There is a small tank and drain field located just west of the building.

The fourth system is located just south of the Cox residence. There is one tank and a drain field. The Cox residence uses this system. The system was designed to accept the K&W facilities, but they have not yet hooked up to the system.

The sink in the back shop does not feed into any septic system. It just feeds into a dry well located outside the building.

There is a failed small tank and drain field located just east of the Cox residence that has been abandoned. There was also a tank and drain field located by the main entrance near Containerville that was removed.

Last Update September 19, 2018 By: Jerry Crane



Join Train Mountain Now!

Register or Join - https://trainmtn.org/tmrrmembers/Member_Portal.aspx

Greetings from Joyce at the front office:

The warmer days that are running in the 60's and the sunshine are most welcome! Mornings are still on the chilly side, though. The birds and critters are becoming more plentiful and some of the bulbs are starting to bloom.

It is awfully quiet on the mountain with no visitors or members coming in because of our temporary closure, which started on March 24th, and the cancelled Kitsap work week. I am getting a bit of a chance to clean up my oh-so-messy desk and catch up on a few things though, so maybe the office will look a lot less cluttered the next time you get to be here.

Kitty Charlie, our super greeter, is a bit lost on what he should be doing since he has little to greet besides me and Raven when she comes in late in the day. I have been taking him for walks when I take my breaks which are helping to keep him chipper. Kitty Maggie continues to spend most of her days in the office with me as usual.

One of the members sent in a generous \$1,000 donation this month. It is toward the Pullman Car Repaint Project. And other members have continued to renew their memberships. Your support of Train Mountain and of its projects is greatly appreciated. Your memberships help to keep Train Mountain here and running!

We are now at 276 memberships for 2020 with 486 members including all family members. Donations toward the Pullman Car Repaint Project are at \$3,380. AED donations are at \$2,810. Of course, there have been no visitors and no visitor donations this month, so nothing to report on that front.

The Spring Awakening work week and meet have been cancelled due to the COVID-19 world situation.

Hopefully we will all be able to have as smooth as possible restart when we are all given the all's clear to get back to our normal lives and fun activities.

Take care and stay well!



Train Mountain on Oregon Public Broadcast Links

A video segment on Train Mountain and other Oregon destinations was aired on the Oregon Field Guide. You can now view the entire segment directly on the opb.org website here: <https://watch.opb.org/video/3006578129/>

OPB has made the Train Mountain part of the broadcast available on Facebook.

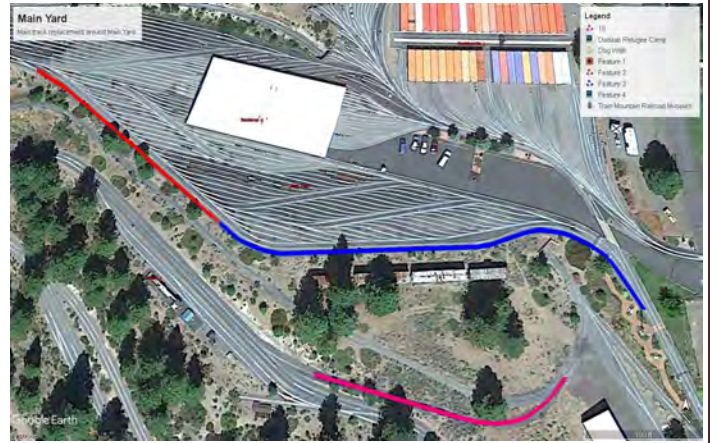
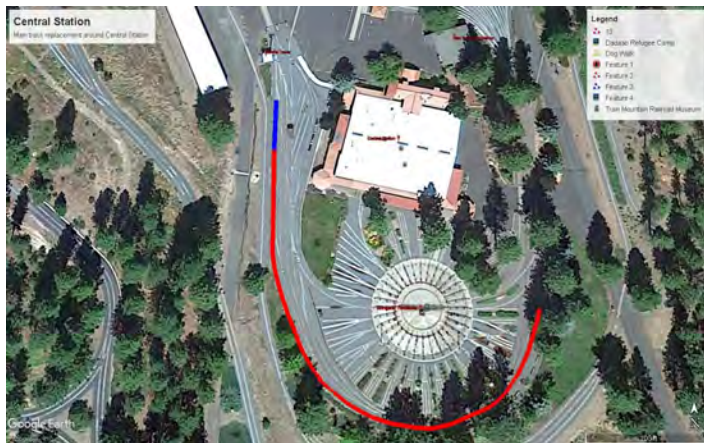
Register to attend a Train Mountain Meet Now!

Track installation at Train Mountain COVID-19 Shut Down

an article by Dennis Ward—Track Superintendent

Because of the on going pandemic track building and track replacement at Train Mountain has ground to a halt. On March 22 Oregon Governor Kate Brown invoked her emergency powers to close all non-essential contact between the citizens. This was done, of course, to prevent the spread of the deadly COVID-19 virus.

The Google Earth images below shows what has been done on the current project (in Blue) and what we plan to do (in Red) when we get back at it. The fifty feet completed at Central Station includes thirty feet of track which was assemble using the experimental Accu-Ties supplied by Enterprise Plastics. The 443' completed around Main Yard includes one right-hand 75' radius switch. There is still 312' plus one switch (left-hand 75' radius) to go. The Central Station project has 437' to



completion (all the switches are in). The track to Colton from the Wedding Cake switch will take 242' of track to complete. Before we leave this work area the crossovers to and from the secondary main will need to be completed.

Additionally we want to replace a switch with a diamond to allow easier access to yard ladders A and B. The crossovers and the diamonds will be done with aluminum rail on plastic ties.

Once the current pandemic is under control and all of the great volunteers can get back to work we should be able to establish several work crews each working on separate parts of this and other track build/replacement projects.

Because the Kitsap Workweek and the Spring Awakening Meet along with its workweek have been cancelled there will be a lot of forest debris removal to take care of. So everyone stay healthy. We will need you to return as soon as restrictions are lifted. Lots to do.



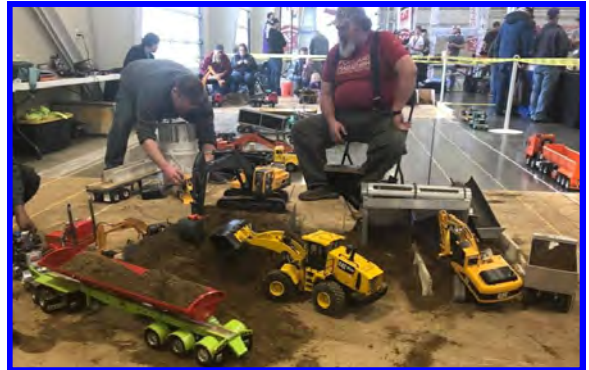
Something Brand New for 2020 Ops Meet

Jim Armstrong

As Monty Python and The Flying Circus said, “**And now for something completely different**”. That’s what I thought when first hearing about an organization called PNWSTE (short for Pacific North West Scale Truck and Equipment) who contacted Train Mountain to inquire about the possibility of bringing their “show” to one of our meets.

PNWSTE, also known as the PNW RC club, is a group of guys kind of like us and our trains, except they work with (ok, they play with) scale remote control vehicles like semis, front loaders, graders, and they like to actually dig and move dirt along with other loads at a simulated construction site. After talking with one of their members, Anthony Kalnoski, we began planning for them to attend our 2020 Ops Meet at the end of June; that is if Train Mountain is able to re-open (with the good graces of the State of Oregon) in time for the meet to actually happen.

Anthony and about a dozen or so of his fellow club members will be bringing a contingency of battery operated construction vehicles as a new industry which will be served by our freight operations during the meet. They will be stationed at an appropriate siding where we can transport their equipment to and from the construction site and then support their needs by delivering supplies and picking up their products as part of our freight hauling routine.



They primarily run Tamiya King Haulers, & Tamiya Grand Haulers, but there are a few Lesu trucks sprinkled in as well. Tamiya & Lesu truck kits are in 1:14 scale, meaning 1 inch is equal to 14 inches. They do have some Bruder trucks as well. Bruder is a German manufacturer of excellent quality kids’ toys (*ed: note - I think we all have good toys!*). The Bruder's have been carefully converted from a child’s push toy to RC machines. Most of the trailers that these trucks yank around have been custom built. Some are kits that have been modified, while others are 100% scratch built.

Their construction site will be located within walking distance of Central Station so visitors and members alike can enjoy the fun and activities of this newest live-action industry to join our clan of merry brothers and sisters. It is hoped that their attendance will be an annual part of TM’s Ops Meet for many years to come.

For the June event, there will be a vast array of RC trucks & equipment. There will be converted Bruder toys, scratch-built projects, & kits assembled just as they come IE. stock.

Here’s hoping to see you at the Ops Meet this year!

PS: Quick link to a video of some of their fun times:

<https://youtu.be/kcaZakh6yTw>



Join Train Mountain Now!

Register or Join - https://trainmtn.org/tmrrmembers/Member_Portal.aspx

Keeping the Park a Park

Train Mountain is a 2,200 acre plot of land that is very special in many ways. Of all of the private lands in the Klamath Basin we are the largest forested plot of land. We are one of the largest protected elk areas in the basin. Located on this property is the Worlds Largest Outdoor Miniature Railroad.

Within the 16 or so miles of our boundaries are located some camping areas, an RV park, various maintenance buildings, a meeting hall with office space, and so much more. All of these wondrous items require almost constant care to keep it looking and functioning for our many visitors.

We all know about our various Meets with their associated workweeks. We start with the Spring Awakening and run throughout the year. But on an almost daily basis there are many folks adding to the work force.

We have the paid staff of Richard, Dustin, Joyce, Debra, and Raven. There are also the almost daily worker bees of Dennis, Tom, Charlie, Russ, Dale, Boyd, Bert, Bill, Dave, Robert and weather dependent Larry. There is also the Visitor Center help of Barbara, Marsha and Sabra. The continuing buildup of our library by Sabra and of course Rose and her morning repasts. Off campus we have the technological support of John and Dave. Administratively off campus we have the dual presidents of Jerry (TMI) and Jeff (TMRR) and the BOD of TMRR. We also have the support of a couple of off campus groups that do so much for the park and those are Kitsap Live Steamers and the group we affectionately call the Idaho Mafia. Locally also we have the duo of Bert and Boyd and now we also have the recently retired Dale and his small band of Dennis, Gil, and Russ. The off campus folks do stuff for the Park at their home location and then transport the finished goods to the Park. They have rebuilt locos and rolling stock, built the Containerville transfer table and lots of other goodies.

All of these folks all have devoted a lot of volunteer time to the pursuit of making the Train Mountain experience a good one. The work done during the workweeks is terrific and it allows us to do major projects every year, but without these other day-to-day warriors we would not be able to have a miniature railroad with the scope and size of Train Mountain.

Thanks to all of them for past achievements and of course for whatever they may come up with next! With out these almost daily efforts we could not have the great Park we do today.

During your visit to the park, please remember a couple of things. First and foremost it's your park. Treat it with respect and think of your fellow members and our many guests. If you see paper or trash on the right of way or on the grounds, please pick it up and place it in the trash receptacles around the park. Loose boards or tripping hazards need to be fixed. If you are camping or RV-ing, please keep your area presentable.

Many live steam clubs have their respective train layouts as part of community parks or similar land use agreements and as such they are responsible to that entity to maintain their portion of the park. In our case we are the park and the layout. Think of it this way, along with your membership you get to be an honorary Park Ranger! We all love this place but it can't be done with just a few folks, it needs all of us make it even more special than it already is.

It's your park, so let's maintain it, and of course let's show it off with pride!

Rail Tours versus Train Rides *Reprint from an earlier issue*

Once the Park gets the OK to reopen we will be back giving our much requested Rail Tours. A Rail Tour is just that, a multi stop Tour of the railroad with a docent(s) **explaining** a little bit about what is at each of the Rail Tour stops. Listed below is a brief description of the role we the members play in the bigger picture of this thing we call Train Mountain:

Train Mountain Institute (TMI) owns Train Mountain and operates it for educational purposes. In order to do this function TMI provides both the railroad and the equipment for the educational tours.

The membership will provide **TRAINED** docents to give these tours on a daily basis Monday through Friday, weather dependent, and of course availability of docents!

For the purposes of these Rail Tours, docents Russ Wood, David Savage and Tom Watson have designed a certification procedure. This certification system is in its infancy and of course it will be adjusted as we go along. The reason for this certification system is that it is for legal and insurance reasons. Our tours are hauling more and more public all the time and we just need to cover our exposure to liability for both the individual members, the membership group and the owner group.

There are two parts of the Rail Tour system. There is the Meet and Greet side, which will be called the **Visitor Center** function, which has been up to now a Front Office function. Barbara Ward has taken on the task of recruiting Meet and Greeters to man the **Visitor Center** Office when the weather gets better and the crowds come back. They will be responsible for getting releases signed and for the showing of a new Rail Tour Safety Video similar to, but a shorter version of our standard Safety Video. If this is a function you or your spouse would like to help us with please contact Barbara and she will get you signed up. This function needs to be manned from 10 to 3 daily, Monday thru Friday during the season. If no docents are available this function reverts back to the Front Office, which is already stretched to its limit. So any help is really a double bonus. Volunteering for an hour or two or on a specific day like Thursdays for an example would be most beneficial.

The second **Rail Tour Group** is of course the **Engineers** and **Conductors** who will actually run the trains and give the tours. The tours are fun to do and each tour only takes a little over an hour or so to give. If this is something you think you might want to do then please contact Tom, Dave or Russ and let us know. That will start the ball rolling. The main thing to remember is that these are Rail Tours **not** train rides. You will be **TALKING** with the public about trains, Train Mountain, and answering their questions. If we treat them good they reward us with good donations. Donations help keep our membership dues low and keep all of the other functions that TMI provides running smoothly. So here's the deal, we really need more docents, we will give you the training necessary, and TMI provides the equipment. How cool is that!

Lastly there has been a slight change to the Train Mountain rule regarding no Joy Riding until after 4:00 during workweeks. The noted exception is of course work trains. The new change is an addendum, which adds Tour Trains to the daily mix. So during workweeks communication between the work crews, Rail Tour Office, and the Rail Tours will be necessary to alert the tour trains as to possible track and or routing issues.

Several of our members have spent the past two winters getting some of the TMI equipment operational for the upcoming season. It is hoped that we might not experience the equipment shortages we faced in 2018/2019. We thank these members for giving of their time and of course their expertise. It is hoped that at some point in time this year we will start all of these functions back up and running, full steam ahead! We want Safe operation, happy visitors, and of course we want to have some fun running some trains.

Pullman Repaint Project - *Fifth Call for Assistance*

Hi, my name is Duane Kaasa.

WE'RE GETTING CLOSE!!

For those who don't know me, I am the person who headed up the painting of the three cabooses at the front gate and at Willamette Western and the wine car. I have wanted to get the big Pullman car painted but life has gotten in the way. I am hoping to get this done sometime next summer (2020). The intent is to restore the exterior of the car to its original New York Central paint scheme.



I am with this letter, starting a fund to accomplish this project. I personally funded the painting of the two cabooses at the Train Mountain main gate, by about 95 %, including doing the red one twice due to paint issues. The Pullman car will cost about \$3500 for materials alone. I am asking for donations toward this project since I cannot afford this on my own. I am personally starting this fund with a \$500 startup donation.

I have already talked to Bill Shepherd who has offered his old pickup as a mount for the scaffolding. This setup can then be driven alongside the Pullman car to accomplish the various tasks. *A pressure washer has been donated to this worthy cause so that will help.* This can be used to blast the rusting flaking areas on top, after rough grinding. With the scaffolding thus mounted we can work while leaning out over the roof of the car. After blasting, the bad areas can either be filled with Bondo or fiberglass as necessary.

I have been researching high end catalyzed paint. I am working with someone with “Stewart Systems” water based paints. This stuff is aircraft certified and sold the world over. They have a soft paint for fabric surfaces, for flexibility, and a hard paint for metal surfaces. I have seen this stuff on very nice restored classic cars and aircraft. They have “how to” videos of their paint systems being applied.

Donations will be totally handled by Train Mountain Institute in a fund for this project. Help volunteers and donators will be highly appreciated.

Thank you, Duane

From the ED: Donations for this project are to TMI so therefore if you need a tax deductible receipt make sure you let Joyce know.

Register to attend a Train Mountain Meet Now!

HISTORICAL

A brand new Motor Pool building going up



Looks like it was rare year, the ground has puddles!



Great Northern & Cascade Railway

A call for some help

The GN&CR is the 7.5" gauge railroad in the city park at Skykomish, WA. The BNSF donated an SD9 several years ago to be part of the City Railroad park. After 7 years of setting on railroad land adjacent to the park with no plan for its final resting place, the BNSF gave an ultimatum that it is time to move or scrap. That finally seems to have lit a fire under the city council and maybe we will finally get it moved to a proper display location. We started repainting it about three years ago to the original GN paint scheme but quit when the city could not come to terms on a final location. Now the mayor is showing some real interest in saving the locomotive as part of the city's history (see GoFundMe link below). The loco is unique in that it is one of only two SD9's that the GN bought with dynamic brakes. It served Skykomish for many years as a road switcher.

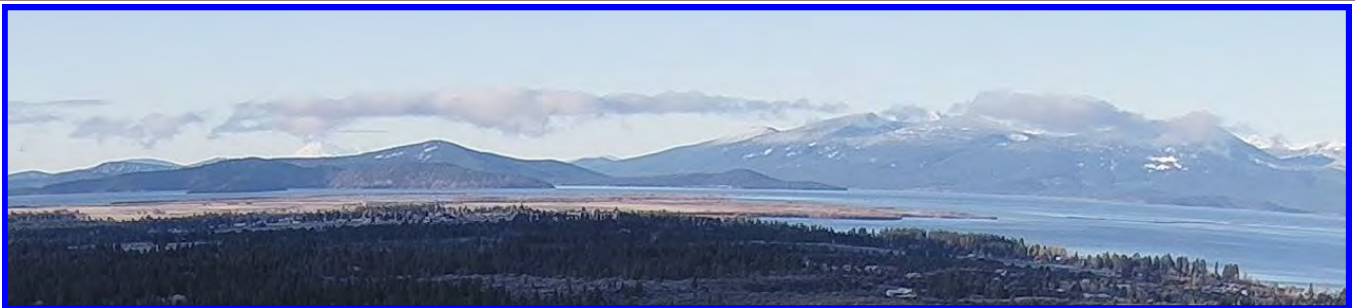
A great looking picture of the subject loco, it has Alan Jesmers electric SD9 in front. Nearly an exact replica except it is one number off. Ours is 599, Alan's is 600.



<https://greatnortherncascaderailway.com/> Link to the club's web site

<Members@gncrailway.org> Link to the club email site

<https://www.gofundme.com/f/save-599> Link to the GoFundMe site



WE ARE ALL VOLUNTEERS
DON'T YELL AT ME, I AM A VOLUNTEER!

Register to attend a Train Mountain Meet Now!

The Collier Park calendar for next year has some events going on at the same time as Train Mountain events. They are just up the road from Train Mountain and is really a worthwhile place to visit.

Special Events 2020 Collier Memorial State Park



Dutch Oven Cook-off

Sunday, May 24th | 8am—2:30pm

Join as a chef to compete or a judge for the people's choice award at this tasty event hosted at the Cookhouse.

Register online [here](https://bit.ly/320UmCy). <https://bit.ly/320UmCy>



Living History Day

Sunday, June 21st | 10am—3pm

Collier Logging Museum's largest event of the year! Historic equipment operation, trade crafts, kids activities, live music, food vendors and more.



Loggers Breakfast

Sunday, September 6th | 9:30am—11:30am

Friends of Collier Park fundraiser breakfast. Serving pancakes, eggs, bacon, sausage and more. Fee event.

All FREE

**Collier Memorial State Park & Logging Museum
46000 Hwy 97 N Chiloquin, OR 97624**

Information: 541-783-2471x 24 | www.oregonstateparks.org

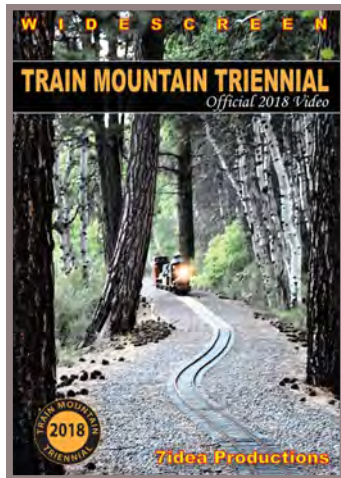


There are additional events scheduled for Collier Park. If you are going to be in the area, go to their website and get the latest schedule of events.

CLASSIFIEDS

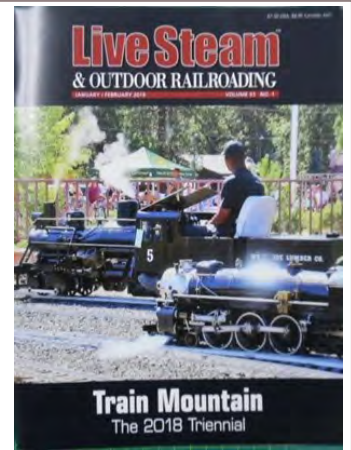
2018 Triennial Video Now Available

The 2018 Train Mountain Triennial video from Aaron Benson at 7Idea Productions is now available. You can order online at the link shown or you can call the office at 541-783-3030 to get your copy. This is a most enjoyable video created by a true video artist and of course it just happens to be about our most favorite subject! The cost of the video is just \$29.95, quite a bargain!



Our good friend Jim over at Discover Live Steam has placed ads for us on his terrific website, thanks Jim. discoverlivesteam.com

Did you see the great article and front cover story from the January / February 2019 issue of Live Steam and Outdoor Railroading? It is a great article covering the 2018 Triennial. and the great gang of folks that hang around the place and put on terrific live steam trainmeets. As an added bonus there is a photo album by member Michelle Moore! How about that! Pretty cool!



SALE!

OPPORTUNITY FOR OTHER TRAIN CLUBS

SALE!

How would you like to have your very own Time-Share house and shop near the World's Largest Hobby Railroad? Think out of the box! A four BR, 2 Bath good house and **big insulated shop** for trains, etc. On 10.27 acres. Updated cabinetry in kitchen, laminate flooring in much of the house. Landscaping. Approx. **2120 square feet**. Detached **two car garage**. Space for RV and hook up. Easy access to HWY 97. Directions: North on Hwy 97. Turn east on Rainbow Park Dr., first driveway to left.

109 Rainbow Park Dr., Chiloquin, OR - \$279,000

This could be used as a Time-Share and be owned by three or four club members. A great place for members, children, grandchildren and train work, storage, etc.

Call S. Rickman at (541) 783-3798 or Frank Bartholomew (209) 966-4322.

This is your newsletter!
Thank you to everyone that took the
time to submit articles this month.
Please keep it up!

Crater Lake/ Train Mountain Vacation Rentals

Crater Lake Chalet

Located on Hwy 422, only 1 mile off Hwy 62 and 2 miles from Hwy 97 in the Chiloquin area. This house is at north end of Train Mountain and contiguous to Train Mountain.



This comfortable house sits on 35 beautiful acres. 2 bedrooms and 2 bathrooms. Can sleep up to 6 people.

Panoramic View Ranch House / Crater Lake

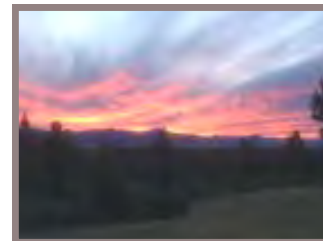
This ranch house is located on Hwy 62, and attaches to the west side of Train Mountain.



The 56 acres, panoramic views of Agency Lake and

the Cascades. Enjoy a peaceful and private experience. 4 bedrooms and 2 bathrooms.

Can sleep up to 8 people.



For more information please call: **Julie 415-756-3943** or **Mike 415-420-9026**

10% off for train mountain members

www.getawayvacationhome.com

Train Mountain Railroad and Sleep Inn Hotel

Sleep Inn is the new hotel located next to the Casino in Chiloquin. The manager is **Mr. Ellsworth** and he has worked with Train Mountain for several years in his past capacity as manager of the Travel Center. The Front Desk number is 541-827-5300. He has stated that the 2019 season is already getting booked so if you would like to stay at the Sleep Inn I would strongly suggest you make your reservations now. Make sure you inform them you are a Train Mountain member to get the best rate. It is a brand new facility and has lots of great amenities not the least which is they are just across Hwy 97 from the park.

Amenities include:

- **Free WiFi**
- **Free breakfast**
- **Meeting space**
- **Fitness center**
- **Indoor heated pool**

Guest rooms feature:

- **Refrigerator and microwave**
- **Premium bedding**
- **Work desk**
- **Flat-screen TV**
- **Coffee maker**

Sleep Inn & Suites® hotel offers easy access to a variety of local attractions, including the Kla-Mo-Ya Casino and:

- **Crater Lake National Park**
- **Klamath Falls**
- **Train Mountain Railroad Museum**
- **Klamath Marsh Wildlife Refuge**
- **Collier Memorial State Park**

Front Desk number is 541-827-5300 ask for the Train Mountain discounted rate.

Please Volunteer at a Train Mountain Meet!

CLASSIFIEDS

I am sad that the time has come to say goodbye to Jack - my little green mogul. JK, the 10 wheeler, is coming along far enough that he needs the room in my toy box. Little Engines 1880's mogul. Engine and tender only.



Propane fired,
copper boiler,
many
Superscale
appliances.

\$12,000.



John Lovely 1130 W Shullenbarger Dr
Flagstaff, AZ 86005 JMLProd at aol.com
928-774-7589 (talk to the machine)

THE POTBELLY CAFE



Located only 1.5 miles off Hwy 97 in Downtown Chiloquin in the same building as the Post Office 212 1st Avenue, Chiloquin, OREGON 97624 -- Phone: (541) 783-0988



Good Service
Good Food
Friendly Folks



Banquet Ticket Sales

It is very important to purchase your Meet Banquet Tickets by Noon on the Friday before the Meets Saturday Banquet.

We must get the number of attendees to the caterer to make sure there is enough food to feed everyone.

If you plan to arrive on the Friday of a Meet, please call the TMRR Office during business hours and provide your name and number of guests so we can add those to the attendee count.

We want everyone to have the opportunity to attend

HAVE SOMETHING YOU WANT TO SELL?

Place an ad in the Gazette!

1/8 Page: \$25/month or \$250/year

1/4 Page: \$40/month or \$400/year

1/2 Page: \$70/month or \$700/year

Full Page: \$125/month or \$1250/year

Published by Train Mountain Railroad

P.O. Box 438

Chiloquin, OR 97624

Email: info@tmrr.org Phone: 541-783-3030

Contributors: TMRR BOD, Friends, TMI

Photos: Tom Watson



Crater Lake Junction Travel Center

34005 Hwy 97 N, Chiloquin, OR 97624, 541-783-9800

The Crater Lake Junction Travel Center opened for business in 2010, and is owned by the Klamath, Modoc and Yahooskin Tribes. Open 24 hours a day and located just next door to Kla-Mo-Ya Casino as you enter, this travel center offers competitive fuel prices and many convenience items.

Travelers can fuel up with gas, diesel, or propane. Stop in for a snack or soda, or grab a quick meal featuring food to go or you can eat it there, Free Wi-Fi, a comfortable lounge with large screen TVs, laundry and shower facilities, and ATMs are all available.

I AM NOT A ROBOT!

There have been a few changes made to the member's site, specifically where payment information is entered. The most noticeable change is that we have added a question asking if you are a robot. You check the box and depending on a bunch of things, you may be asked to choose from a set of pictures. You may be asked to click the pictures that show street signs, or click on pictures that show store fronts. It seems silly, but the questions and challenges are carefully crafted and updated by Google, and have an amazing success rate at determining if the entity pressing the keys is a real person or a computer program ("robot") trying to gain access.

The technology is called "CAPTCHA", or in our case "reCAPTCHA" and is quickly being the standard for online protection against robots, which pose a real problem to web sites. This is replacing the (to me) very irritating practice of trying to figure out what letters and numbers they are showing in fuzzy text. If you have questions or problems getting around the new challenge (or if you are a robot!), feel free to give Joyce a call in the office.

Dale Furseth, "the computer guy"

Volunteer Hours Reporting

Dale Furseth has worked his techie magic on the member's part of our website again. You can now report your monthly volunteer hours online. From the Train Mountain Railroad home page, click on "Online Member Resources: Join Train Mountain: Register for Meets", then on "Enter Volunteer Hours" or go there directly with this link:

https://trainmtn.org/tmrrmembers/Member_VolunteerHours.aspx

Choose your name from the drop down menu, enter your total hours in the box that matches the month you are reporting your hours for and click on "Update Information" to submit them. So-o-o simple! We hope you enjoy using this new feature.

Please submit your volunteer hours. If you work off site or at home on Train Mountain projects - these hours count.



REMEMBER: No job is complete without the paperwork!

Please Volunteer at a Train Mountain Meet!

NOTICES

Gazette PUBLICATION DEADLINE:

Submissions to the Gazette must be received by the 15th of the month of publication. The fifteenth of the month is to be the last day to submit material. Material received after the 15th of the month may be held until the following month or rejected.

SUBMISSION CRITERIA

Articles and ads may be submitted via a pdf file, MS WORD, Open Office, notepad, or similar text file attached to an email. The email SUBJECT line must include your article title and a date.

Please give each article a distinct file name with your name and a date. If everyone submits an article named "article for gazette" or something similar it will often get overwritten by another article with the same name when downloading. Articles sent as text in a email text will no longer be accepted.

Please use a common open source FONT such as ARIAL that can be displayed in all Browsers, and is easy to read. Please do NOT use the Calibri font, as we must take the time to convert it to Arial.

If your document has an embedded image, you must also include the image separately as a jpg,

Visitors to Train Mountain and YOU:

Train Mountain is very popular and is continually attracting visitors from throughout the world. We announce that our hours are from 9:00 AM until 3:00 PM Monday through Friday during the summer, and 10:00 AM to 2:00 PM during the winter. The office is closed on weekends except during meets, and then only when volunteers are available to open the office.

Our insurance advisors request that all people (members and visitors) complete and sign a liability release. If **YOU** as a member encounter visitors on the property without a visitors pass please direct them to the office so that we can insure that a release has been completed and a visitors pass has been issued.

If **YOU**, as a member, open the gate and allow visitors to pass through - **YOU** are responsible to see that the release has been completed, and **YOU** are liable for them until they sign a release. Releases are available in the mailboxes near the office for those times when the office is closed. There are also releases available in the kitchen and in the Back Shop.

If you do not want to, or do not have the time to, ensure that the releases are completed - then please graciously explain that the train park is closed to visitors and that the open hours are normally (Winter - 10:00 AM until 2:00 PM) (Summer - 9:00 AM until 3:00 PM) Monday through

Please Volunteer at a Train Mountain Meet!

Train Mountain is a NO SMOKING Facility

During recent events, many Members and their Guests have been ignoring this policy. There are only three designated smoking areas at Train Mountain:

- (1) Outside the front of the Backshop**
- (2) Outside the east door of the Hall of Flags**
- (3) Outside the Motor Pool (Maintenance Building)**

Due to the high fire danger at Train Mountain during the summer, we have zero tolerance for anyone smoking outside one of the designated areas.

There is NO SMOKING anywhere out on the track!

Members, Guests, and Visitors that continue to violate the Train Mountain Smoking Policy may be asked to leave.

What is Amazon Smile?

In a nutshell, it is a way for Train Mountain to receive 501c3 donations from Amazon. According to Amazon: AmazonSmile is a simple and automatic way for you to support your favorite charitable organization every time you shop, at no cost to you. When you shop at smile.amazon.com, you'll find the exact same low prices, vast selection and convenient shopping experience as Amazon.com, with the added bonus that Amazon will donate a portion of the purchase price to your favorite charitable organization. You can choose from nearly one million organizations to support.

When you go to Amazon Smile, choose Train Mountain Institute as your charity. In order for this to work, you must always start from Amazon Smile. Then all else is the same, your account, wish lists, etc. Also available is a direct link: <http://smile.amazon.com/ch/27-4031025> for the TMI account.

The AmazonSmile Foundation will donate 0.5% of the purchase price from your eligible AmazonSmile purchases. I found that just about everything I purchased lately is eligible.

If we can get a large number of Train Mountain supporters to take advantage of the Amazon Smile program, this could result in sizable donations to Train Mountain.

Click here for more information.

Gate Code

Due to security concerns, the Gate Code for the Train Mountain Main Gate may be changed at any time without notice. Any Member planning to arrive at Train Mountain when the Office is closed will need to contact the Office prior to arrival to ensure they have the current Gate Code.

The Gate Code was changed on March 24, 2020

