



# The Mountain CAZETTE



© 2020, Train Mountain

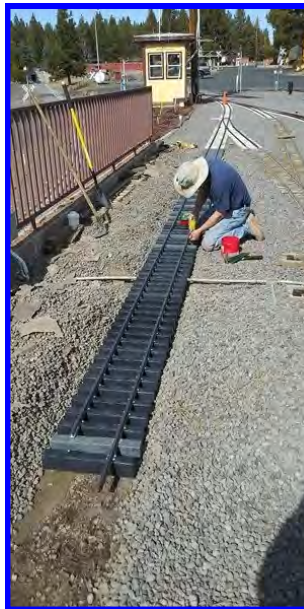
An Official Publication of the Train Mountain Institute and TM Railroad—Issue Vol. #4 Issue #21 **May 2020**

## May

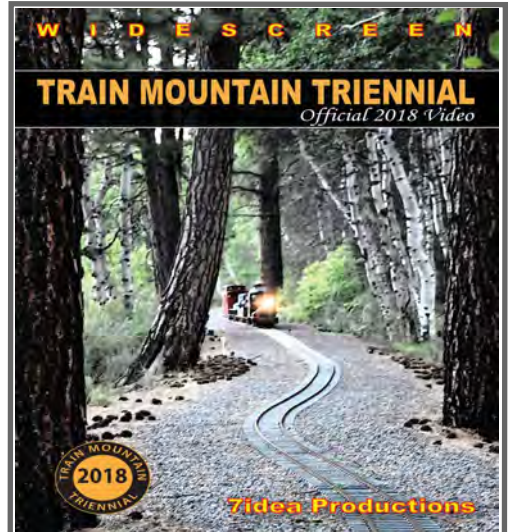
OK, how about some good news, it actually rained for a short period of time. That washed a lot of the pine pollen out of the trees and the little breeze that came with the rain helped too.

All we need now is permission to reopen the Park (**more good news - see page two**). Next up was to be the always popular Narrow Gauge Meet and work week. It is now officially canceled for 2020. Future meets / work weeks this year, we may alter how we do work parties, morning meetings, use of the Hall of Flags, etc., but we should still be able to put on a pretty good show. Lot's of cleanup to do but I believe the track itself is in decent shape. So here's hoping we get permission to open up the Park (**see page two**) and that we can figure out what that means and how to do it safely.

If you've been watching the cameras you have noticed some activities going on. Jerry set up a system where a few locals could come and do some work in the park. This list allowed certain individuals to do some specific tasks. IE I was allowed to rake or help Dennis in the Track Shop if requested. Gil and Dale were allowed to do some track work, and use an engine but only for moving supplies. Bert was allowed to work on his Main Yard project. Boyd was allowed into the Back Shop to finish working on the K&W engines for their use once K&W can reopen for their shortened season.



### 2018 TRIENNIAL VIDEO AVAILABLE NOW



Click Here to Purchase Online Or Go To:

<https://trainmtn.org/tmrmembers/videosales1.aspx>



*Tick, Tick, Tick, Tick!*

For local Lodging please go to our web site and click on Local Lodging. We think it's accurate as of last summer so if you call one of these folks, and they have changed or are no longer available PLEASE let us know.



## Triennial 2021

Prep June 12<sup>th</sup> – 20<sup>th</sup>

Meet June 21<sup>st</sup> – 27<sup>th</sup>

**SPECIAL MESSAGE FROM  
Jerry Crane President TMI  
Reopening Train Mountain Site**

**Phase One**

Klamath County has received permission from the State of Oregon to start reopening from the lock down order under the States' Phase One Reopening Plan.

In accordance, Train Mountain will start allowing access to the TM site in accordance with the State's plan and our need to protect our employees.

**We will not be opening the museum to the public at this time.** The TM site will be open to only some members at this time.

Starting on May 15, 2020 those members that reside in Klamath County can enter the TM site to do volunteer work and/or to run their trains. No overnight stays will be allowed. Any local residents visiting the site must return to their own homes each day. The members must follow all social distancing rules. The members must not enter any buildings except those where they are performing specific volunteer work. The only bath room facilities that will be open will be the restrooms on the east side of the Central Station.

If you are a local resident that is planning on coming to TM, please call the office to receive the new gate code.

Access to the site for members that live outside Klamath County will possibly be granted when the County gets approval to go to Phase Two opening. Phase Two opening can only start, at the earliest, 21 days after the start of Phase One opening.

Approved by: Train Mountain Board of Directors  
Jerry Crane, President BOD  
May 14, 2020

**Train Mountain front office:  
1-541-783-3030 M-F 9-2 PST**



**Register to attend a Train Mountain Meet Now!**

Register or Join - [https://trainmtn.org/tmrrmembers/Member\\_Portal.aspx](https://trainmtn.org/tmrrmembers/Member_Portal.aspx)

# Cancellation of Narrow Gauge Meet 2020

By Jeff Mills  
Train Mountain Railroad Board President

The Oregon State and Klamath County Re-opening is in Phase One began May 15<sup>th</sup> and will remain in place through at least the end of May. Due to the restrictions which remain in place during Phase One for Klamath County, the Narrow-Gauge Meet will have to be cancelled. The Train Mountain Board of Directors will evaluate each upcoming meet as conditions evolve.

Mandatory use of PPE and personal distancing guidelines by ALL employees and members will be required by TMI Board for Park use. Visitors will still not be allowed at this time.

Currently, the OPS meet will remain scheduled from June 20<sup>th</sup> to 28<sup>th</sup>. However, the Ops Meet committee will suspend the "Operations" aspect of that Meet. This means those dates will be considered a Work Week only. The OPS Committee is looking at dates, later in the year, to possibly run a mini-OPS meet. Keeping this meet scheduled is dependent upon Klamath County attaining Phase Two well **prior** to the scheduled meet dates.

All scheduled meets will need to modify their meet format. By this I mean there will probably be NO banquet or morning meetings within the Central Station building. More about such changes will be determined as the reopening of the Park unfolds. Please watch for announcements in the Gazette and the social media sites. For more information on Oregon's Re-opening go to; <https://www.oregonlive.com/coronavirus/>

Regarding refunds on *paid* meet fees and All-Meet passes. Meet fees are vital revenue which keeps Train Mountain Railroad Parks surviving. It is my sincerest hope that any paid meet fees for canceled meets be **considered a donation** to keep Train Mountain alive. However, an individual's financial needs can be considered, and a refund of paid meet fees or application to a future meet can be made upon formal request to the Business Office. All Meet Passes can be refunded on a pro-rated basis upon formal request at the end of the meet year.

The on-line Meet registration site is still available with the clear understanding that all additional meets could still be cancelled. Additionally, careful consideration and planning needs to be made regarding the availability of lodging and food services once general membership meets are held. The uncertainty of which businesses will be open should be checked prior to arrival.

The re-opening of the Train Mountain Facility will be in strict compliance with Oregon State and Klamath County mandates for your personal safety. We will get through this and be able to resume the activities which have become a large part of our lives in due time. Your patience and cooperation with our policies for your protection are appreciated.

## 2020 Train Mountain Train Meet Schedule

	Polar Bear Train Meet	Spring Awakening Train Meet	Narrow Gauge Train Meet	Operations Train Meet	August Train Meet	Big Build Train Meet	Fall Colors Train Meet
<b>Work Week</b>	none	5/7 to 5/7	5/27 to 5/27	6/20 to 6/24	7/25 to 7/30	8/29 to 9/3	none
<b>Meet</b>	1/1 to 1/20	5/8 to 5/10	5/29 to 5/31	6/25 to 6/28	7/31 to 8/2	9/4 to 9/6	10/9 to 10/12

**Join Train Mountain Now!**

Register or Join - [https://trainmtn.org/tmrrmembers/Member\\_Portal.aspx](https://trainmtn.org/tmrrmembers/Member_Portal.aspx)

## Article Number Nine on “Understanding TM” By: Jerry Crane

As I stated in last month’s Gazette, we will be looking at our utilities for the next few articles. We have looked at our water and septic systems. This month’s subject is our **electrical power system**. The “Understanding” document shown below has been shortened from the official document. I have deleted a great deal of minute details that will be of interest only by those working on our power system.

At the end of the following document, I note that there is a lot of work on going. We need help completing this work. This is a good opportunity for anyone who would like to volunteer. We need to complete and update all our electrical panel schedules. You do not need to be an electrician to help with this project. The work primarily consists of turning off and on electrical panel breakers and recording the results. Please contact me if you would like to help.

### Understanding Train Mountain Electrical Service

#### Electrical Power Supply

Train Mountain receives its electrical power from Pacific Power. All of our power is single phase 120/240 power. The power is delivered to us through 13 separate meters. Train Mountain pays the bill for 11 of the meters. Two of the meters are paid by other individuals. Each of these meters supplies several electrical panels and sub-panels. Each electrical panel is labeled and has a “Train Mountain Electrical Panel Schedule”. These schedules can be found in a plastic envelope in each panel box and in the central file in the office. The master Excel document for each panel schedule can be found in the TM server. When making changes or additions to any electrical panel, the master Excel document should be updated and copies made to replace the office and the in box schedules.

With help from a grant, all the electric incandescent and florescent lights in all buildings were replaced with LED light bulbs in 2017.

The largest user of electricity at TM is the well water pumps.

As of this update several of the panel schedules are under construction.

Last Updated May 12, 2020 By: Jerry Crane



## Message from TMRR Treasurer

David Waterstreet TMRR Treasurer

As you all are well aware, the COVID19 pandemic has had a rather dramatic effect on all of us, individually and institutionally. Our overall memberships are at about 41% from 2019, and 1<sup>st</sup> quarter income is down about 50% from this time compared to 2019. I am sure that is not surprising to many of you either. As such, our primary income is dependent on your memberships, meet fees and rental receipts, TMRR and TMI rely on your generosity as dues paying members to keep our organization and fundamental operations solvent. While the increasing donations from the public have added to our fiscal soundness, it is a portion of membership fees that are the roadbed of the organization along with meet fees that are the primary source of TMRR income. The park closure, as a result of the virus, is disheartening for sure; but it does not negate the financial obligations we still must meet. General and ongoing overhead costs like utilities, maintenance, administrative, taxes still accrue. Our membership dues cover a good portion of these expenses. The continuing weekly extension of the restrictions is forcing the TMRR BOD to cancel meets as we go this summer. As income from those fees has stopped, so has directly related meet expenses. These generally offset one another although revenue above meet expenses does add to the TMRR general fund for ongoing expenses. This year those fees are being held in abeyance for the time being. As president Jeff Mills indicated in his article, these meet fees are refundable upon request. However, I request you consider donating your unused meet fees to TMRR instead of requesting a refund. We rely on TMRR's portion of membership fees plus meet fees to balance our budget. With the loss of meet fees, the reliance on memberships is even greater this year.

That said, you, as members, have been very loyal and responsive over the past years even though you may not have been able to always visit often or spend extended time at the park in a given year. Many of you typically renew your membership while also paying applicable meet fees during the first meet you attend. Typically Spring Awakening or the Narrow Gauge Meets brings large renewals beyond those renewed online or by mail around the first of the year. We count on that. But this year that has not occurred as robustly, largely a result of the closure I'm sure. Therefore, I am writing to inform you of the current situation and at the same time ask you to please renew your memberships now rather than later. I do not feel that just because you are not able to enjoy our wonderful park at the moment, you are intending to cancel or allow your membership to lapse as a result. We are still here, and will be in the future. But only IF you continue to support us financially with your continued memberships, year in and year out. Only in maintaining our overall membership numbers in the bad years as well as the good ones can we remain viable. Please be assured, we are not in financial trouble at this time. But I do not want to become so either.

The office is open daily, and Joyce is ready to take your phone call renewals, process your online renewals and she loves to open your mailed in renewals. I encourage those whom have not yet renewed, to please do so now to assist us in getting and keeping the trains running as soon as possible and keeping out Railroad Park as gorgeous and welcoming as it is. And finally we of course always welcome any additional general donations – such as part of your stimulus check as well. You know I could not pass that up. Thank you so very much and look forward to seeing many of you soon.



**Register to attend a Train Mountain Meet Now!**

## Greetings from Joyce at the front office:

We have been getting some much needed rain over the past week. That of course is encouraging things to grow greener, faster and much more vigorously.

We are beginning to see signs of things reopening in Klamath County on Oregon's Phase One which started on May 15<sup>th</sup>. There are still a lot of restrictions in place, but at least some things are relaxing up a bit.

Now kitty Charlie is taking me for the daily walks, rain or shine. The fresh air is nice and the exercise is good for both of us. Maggie has been getting braver and sometimes follows Charlie out the office door to sniff the plants and watch the birds. She doesn't stay out for very long, though.

Thank you to all of our members! Your support of Train Mountain is greatly appreciated. Your memberships help to keep Train Mountain here and running!

We are now at 291 memberships for 2020 with 517 members including all family members. Donations toward the Pullman Car Repaint Project are at \$3,380. AED donations are at \$2,820. There were no visitors in April so no visitor donations.

The Narrow Gauge work week and meet have been cancelled

I thought I would have more to write about, but that is all for this month.

It will be so great when the day comes that we get to see you all here again.

Take care and stay well!



## Train Mountain on Oregon Public Broadcast Links

A video segment on Train Mountain and other Oregon destinations was aired on the Oregon Field Guide. You can now view the entire segment directly on the opb.org website here:

<https://watch.opb.org/video/3006578129/>

OPB has made the Train Mountain part of the broadcast available on Facebook.

## Track installation at Train Mountain Coming Back from COVID

an article by Dennis Ward—Track Superintendent

The on going pandemic has slowed track building and track replacement at Train Mountain. However, the Train Mountain Institute Board of Directors has allowed some of the track crew to get back to work as long as the rules of social distancing can be maintained. As a result of this decision Bert Newberry has been allowed to continue revitalizing Main Yard by adding new, longer track screws to the existing track. Additionally, Dale Furseth and Gil Dominguez have been able to get the main track around Main Yard replaced. They have finished putting the ballast back and tuning the new, steel rail on plastic tie track. They have also completed crossovers to the secondary track around Main Yard and installed a new crossover to the western yard lead that will allow more convenient access to ladders A and B. The two of them have also replaced most of (maybe all of by the time this goes to press) wood tied main track around Central Station and Ellingson Turntable with steel track on plastic ties.



Work in the Track Shop continues, trying to build enough track to keep up. It is important to have the inventory available to insure that old, wood tied track can be replaced in a timely manner once we can all get back to work.



Additionally, Richard Cox and Dustin Barnes completed the work on the switch storage area on the west side of the Track Shop. Dick Miller and I, with assistance from Russ Wood and Dale Furseth, have moved our switch inventory from the Backshop area to this new storage area. This allows us to better track the switch inventory to assure that we have the correct switches available for upcoming projects. Russ and I, with a little help from Dale, used the switch toter to place the switches into the inventory storage area. We still have about ten more switches and eight more diamonds to move to inventory. These track components may also be moved by the time this goes to press.

With Klamath County and Train Mountain going into phase one of recovery from the Corona virus we should be able to get well ahead of track production. Also, we should be able to identify and build those switches which are in short supply.

**Join Train Mountain Now!**

Register or Join - [https://trainmtn.org/tmrrmembers/Member\\_Portal.aspx](https://trainmtn.org/tmrrmembers/Member_Portal.aspx)

## Above and Beyond the Call

A lot of clubs have members who are not often mentioned in various postings but who by their vary actions become so much more than just a member. If you've tried to make your way through the Main Yard in its current state you know that we also use it for *RERAILING* training. Its wood ties are very old and most of the screws are missing and the ties are on their last legs. So one member, decided to test out to see if a different longer special screw would allow us to salvage at least one or two more Triennials out of the yard. The member, Bert Newberry, found that the new screw worked very well. He then embarked on an enormous task of replacing the SCREWS in Main Yard!. There are 120 screws in each 10 foot track panel. Main Yard has over a mile of track in it. Each box of screws contains 5,000 screws. He is currently on box 6 or 7 or . . . ! Please when you see Bert, give him a giant high five! Just an amazing task being done by a member all in the background. ***Thank you Bert!***



Dale has undertaken the task of getting some of the vast TMI engine collection up and running. This unit was once a dummy unit, it's now an electric powered engine and as you can see, beautiful! Oh yeah it has a matching unit that is also powered. Looks like a nice Rail Tour pairing.

**Register to attend a Train Mountain Meet Now!**



# LILLYVILLE FAKENEWS TABLOID

**Seymour Skandles - Editor**

## LILLYVILLE CONSTRUCTION BOOM TO CONTINUE FOR THE FORESEEABLE FUTURE

Abel Carpenter, of the Jim Eakin Construction Company, announced yesterday that they cannot keep up with the demand for new buildings in Lillyville. The company has employed every able bodied, willing to work, person all Winter.

The Eakin Construction Company hired Earl Lee Riser to go around Lillyville every morning and wake-up all of the workers.

Here is a list of structures they expect to have completed by Summer: the Saloon; a General Store; a Mini-Mall with a Gunsmith, Land Office, and an unannounced business; a House; and many items for the city such as Hitching Posts, Water Troughs, and a Four-Hole Outhouse; and more.

## EPIDEMIC or PANDEMIC in LILLYVILLE?

Barb E. Dahl, one of the former dancers at the Saloon, brought her grandfather, Kenny Dahl, over from Denmark. Kenny speaks no English, and everyone thinks he is crazy.

The old man runs around Lillyville yelling, "Kogalskab! Kogalskab! Kogalskab!" While running and yelling, he is always looking and pointing at the all the cows running loose in Lillyville.

We finally learned that he is yelling, "Mad Cow Disease!" It seems that he believes that there is a world wide Pandemic of Mad Cow Disease, that they can give it to humans, and that it is coming to Lillyville.

As a result, the Lillyville population has been self quarantining in their houses and tents. They are also practicing something called "Social Distancing."

Because Winter always isolates Lillyville, no one has traveled in or out of Lillyville since last Fall. Thus, according to Dr. Slaughter, and his assistant Al K. Seltzer, there have been no documented cases in Lillyville.

Government Spokesperson, Krystal Ball, said, "We have everything under control."

## NEW CHURCH

The Reverend Dale E. Bread previously believed that Lillyville is closer to "being saved" now that there is a church in town. Recently he became worried following the announcement that the Saloon is under construction.

Attendance has been great, except for the "heathen" men that refuse to attend until their saloon is rebuilt.

The good Reverend sincerely hopes the men will finally attend Church after their Saloon is built. However, history has taught him that getting the men up before noon on Sundays is not easy.

Anna Mosity, head of the temperance movement, said, "We'll see about that!"

The Bear  
living near  
Lillyville has  
come out of  
hibernation!



## What Happened to the Saloon?

Saloon spokesman Al Coholic announced that attorney Lou Pole was able to get the insurance company to pay the replacement costs of the lost stock and collapsed building.

The insurance money allowed them to hire the Eakin Construction Company to build the new Saloon Building.

Anita Drink, one of the local ladies of the evening, was disappointed that there was not enough money for a second story on the Saloon building.

Duncan Disorderly and Donny Brook continue to fight in the spot where the old saloon used to be. They claim it's just nostalgia.

# WEB-CAM GALLERY

Photos by: The Web-Cam



# PHOTO GALLERY

Photos by: Tom Watson



# PHOTO GALLERY

Photos by: Tom Watson

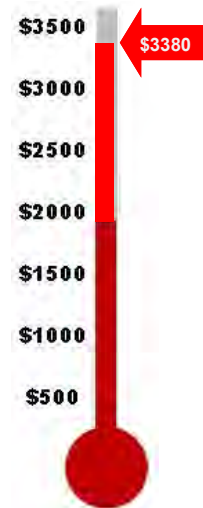


## Pullman Repaint Project - *Fifth Call for Assistance*

Hi, my name is Duane Kaasa.

***WE'RE VERY CLOSE!!***

For those who don't know me, I am the person who headed up the painting of the three cabooses at the front gate and at Willamette Western and the wine car. I have wanted to get the big Pullman car painted but life has gotten in the way. I am hoping to get this done sometime next summer (2020). The intent is to restore the exterior of the car to its original New York Central paint scheme.



I am with this letter, starting a fund to accomplish this project. I personally funded the painting of the two cabooses at the Train Mountain main gate, by about 95 %, including doing the red one twice due to paint issues. The Pullman car will cost about \$3500 for materials alone. I am asking for donations toward this project since I cannot afford this on my own. I am personally starting this fund with a \$500 startup donation.

I have already talked to Bill Shepherd who has offered his old pickup as a mount for the scaffolding. This setup can then be driven alongside the Pullman car to accomplish the various tasks. *A pressure washer has been donated to this worthy cause so that will help.* This can be used to blast the rusting flaking areas on top, after rough grinding. With the scaffolding thus mounted we can work while leaning out over the roof of the car. After blasting, the bad areas can either be filled with Bondo or fiberglass as necessary.

I have been researching high end catalyzed paint. I am working with someone with “Stewart Systems” water based paints. This stuff is aircraft certified and sold the world over. They have a soft paint for fabric surfaces, for flexibility, and a hard paint for metal surfaces. I have seen this stuff on very nice restored classic cars and aircraft. They have “how to” videos of their paint systems being applied.

Donations will be totally handled by Train Mountain Institute in a fund for this project. Help volunteers and donators will be highly appreciated.

Thank you, Duane

*From the ED: Donations for this project are to TMI so therefore if you need a tax deductible receipt make sure you let Joyce know.*

**Register to attend a Train Mountain Meet Now!**

# HISTORICAL

No garden tracks by the turntable



Wood tie track panels ready for installation



Mr. Ellingson running his machine. Laying out the steaming bay tracks



## Great Northern & Cascade Railway

### *A call for some help*

The GN&CR is the 7.5" gauge railroad in the city park at Skykomish, WA. The BNSF donated an SD9 several years ago to be part of the City Railroad park. After 7 years of setting on railroad land adjacent to the park with no plan for its final resting place, the BNSF gave an ultimatum that it is time to move or scrap. That finally seems to have lit a fire under the city council and maybe we will finally get it moved to a proper display location. We started repainting it about three years ago to the original GN paint scheme but quit when the city could not come to terms on a final location. Now the mayor is showing some real interest in saving the locomotive as part of the city's history (see GoFundMe link below). The loco is unique in that it is one of only two SD9's that the GN bought with dynamic brakes. It served Skykomish for many years as a road switcher.

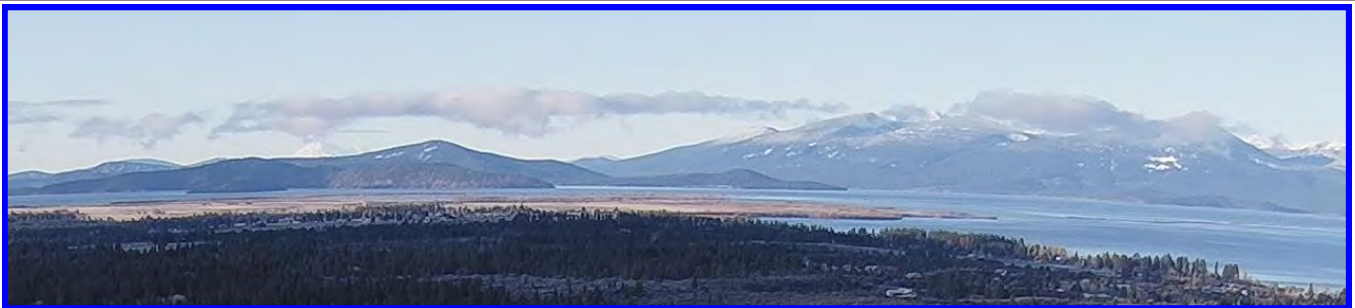
A great looking picture of the subject loco, it has Alan Jesmers electric SD9 in front. Nearly an exact replica except it is one number off. Ours is 599, Alan's is 600.



<https://greatnotherncascaderailway.com/> Link to the club's web site

<[Members@gncrailway.org](mailto:Members@gncrailway.org)> Link to the club email site

<https://www.gofundme.com/f/save-599> Link to the GoFundMe site



**WE ARE ALL VOLUNTEERS**  
**DON'T YELL AT ME, I AM A VOLUNTEER!**

Register to attend a Train Mountain Meet Now!

The Collier Park calendar for next year has some events going on at the same time as Train Mountain events. They are just up the road from Train Mountain and is really a worthwhile place to visit.

## Special Events 2021 Collier Memorial State Park



### Dutch Oven Cook-off

Sunday, May 14th | 8am - 2:30pm

Join as a chef to compete for a judge for the people's choice award at this tasty event hosted at the Cookhouse. Register online [here](https://bit.ly/3mUmCy), <https://bit.ly/3mUmCy>



### Living History Day

Sunday, June 21st | 10am - 3pm

Collier Logging Museum's largest event of the year! Historic equipment operation, live crafts, kids activities, live music, food vendors and more.



### Loggers Breakfast

Sunday, September 6th | 9:30am - 11:30am

Friends of Collier Park fundraiser breakfast. Serving pancakes, eggs, bacon, sausage and more. Fee event.

All FREE

Collier Memorial State Park & Logging Museum  
46000 Hwy 57 N Chillicothe, OR 97624

Information: 541-783-2471x 24 | [www.oregonstateparks.org](http://www.oregonstateparks.org)



There are additional events scheduled for Collier Park. If you are going to be in the area, go to their website and get the latest schedule of events.

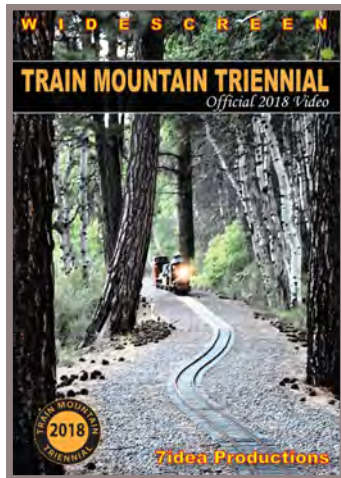
Register to attend a Train Mountain Meet Now!



# CLASSIFIEDS

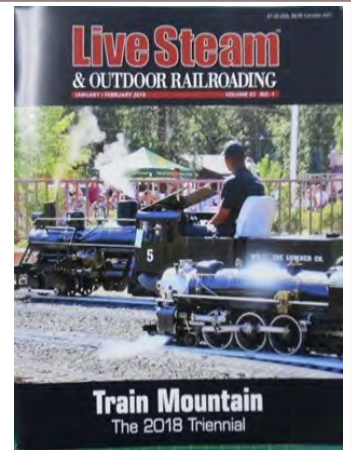
## 2018 Triennial Video Now Available

The 2018 Train Mountain Triennial video from Aaron Benson at 7Idea Productions is now available. You can order online at the link shown or you can call the office at 541-783-3030 to get your copy. This is a most enjoyable video created by a true video artist and of course it just happens to be about our most favorite subject! The cost of the video is just \$29.95, quite a bargain!



Our good friend Jim over at Discover Live Steam has placed ads for us on his terrific website, thanks Jim. [discoverlivesteam.com](http://discoverlivesteam.com)

Did you see the great article and front cover story from the January / February 2019 issue of Live Steam and Outdoor Railroading? It is a great article covering the 2018 Triennial. and the great gang of folks that hang around the place and put on terrific live steam trainmeets. As an added bonus there is a photo album by member Michelle Moore! How about that! Pretty cool!



**SALE!**

### OPPORTUNITY FOR OTHER TRAIN CLUBS

**SALE!**

How would you like to have your very own Time-Share house and shop near the World's Largest Hobby Railroad? Think out of the box! A four BR, 2 Bath good house and **big insulated shop** for trains, etc. On 10.27 acres. Updated cabinetry in kitchen, laminate flooring in much of the house. Landscaping. Approx. **2120 square feet**. Detached **two car garage**. Space for RV and hook up. Easy access to HWY 97. Directions: North on Hwy 97. Turn east on Rainbow Park Dr., first driveway to left.

**109 Rainbow Park Dr., Chiloquin, OR - \$279,000**

This could be used as a Time-Share and be owned by three or four club members. A great place for members, children, grandchildren and train work, storage, etc.

**Call S. Rickman at (541) 783-3798 or Frank Bartholomew (209) 966-4322.**

**This is your newsletter!**  
**Thank you to everyone that took the**  
**time to submit articles this month.**  
**Please keep it up!**

## Crater Lake/ Train Mountain Vacation Rentals

### Crater Lake Chalet

Located on Hwy 422, only 1 mile off Hwy 62 and 2 miles from Hwy 97 in the Chiloquin area. This house is at north end of Train Mountain and contiguous to Train Mountain.



This comfortable house sits on 35 beautiful acres. 2 bedrooms and 2 bathrooms. Can sleep up to 6 people.

### Panoramic View Ranch House / Crater Lake

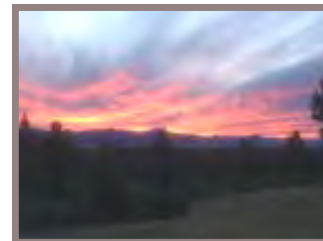
This ranch house is located on Hwy 62, and attaches to the west side of Train Mountain.



The 56 acres, panoramic views of Agency Lake and

the Cascades. Enjoy a peaceful and private experience. 4 bedrooms and 2 bathrooms.

Can sleep up to 8 people.



For more information please call: **Julie 415-756-3943** or **Mike 415-420-9026**

**10% off for train mountain members**

[www.getawayvacationhome.com](http://www.getawayvacationhome.com)

## Train Mountain Railroad and Sleep Inn Hotel

Sleep Inn is the new hotel located next to the Casino in Chiloquin. The manager is **Mr. Ellsworth** and he has worked with Train Mountain for several years in his past capacity as manager of the Travel Center. The Front Desk number is 541-827-5300. He has stated that the 2019 season is already getting booked so if you would like to stay at the Sleep Inn I would strongly suggest you make your reservations now. Make sure you inform them you are a Train Mountain member to get the best rate. It is a brand new facility and has lots of great amenities not the least which is they are just across Hwy 97 from the park.

Amenities include:

- **Free WiFi**
- **Free breakfast**
- **Meeting space**
- **Fitness center**
- **Indoor heated pool**

Guest rooms feature:

- **Refrigerator and microwave**
- **Premium bedding**
- **Work desk**
- **Flat-screen TV**
- **Coffee maker**

Sleep Inn & Suites® hotel offers easy access to a variety of local attractions, including the Kla-Mo-Ya Casino and:

- **Crater Lake National Park**
- **Klamath Falls**
- **Train Mountain Railroad Museum**
- **Klamath Marsh Wildlife Refuge**
- **Collier Memorial State Park**

Front Desk number is 541-827-5300 ask for the Train Mountain discounted rate.

**Please Volunteer at a Train Mountain Meet!**

# CLASSIFIEDS

I am sad that the time has come to say goodbye to Jack - my little green mogul. JK, the 10 wheeler, is coming along far enough that he needs the room in my toy box. Little Engines 1880's mogul. Engine and tender only.



**SOLD**

fire  
iler,  
man,  
Super  
appl  
2,000.

John Lovely 1130 W Shullenbarger Dr  
Flagstaff, AZ 86005 JMLProd at aol.com  
928-774-7589 (talk to the machine)

## THE POTBELLY CAFE



Located only 1.5 miles off Hwy 97 in Downtown Chiloquin in the same building as the Post Office 212 1st Avenue, Chiloquin, OREGON 97624 -- Phone: (541) 783-0988



**Good Service**  
**Good Food**  
**Friendly Folks**



# Banquet Ticket Sales

It is very important to purchase your Meet Banquet Tickets by Noon on the Friday before the Meets Saturday Banquet.

We must get the number of attendees to the caterer to make sure there is enough food to feed everyone.

If you plan to arrive on the Friday of a Meet, please call the TMRR Office during business hours and provide your name and number of guests so we can add those to the attendee count.

We want everyone to have the opportunity to attend

## HAVE SOMETHING YOU WANT TO SELL?

Place an ad in the Gazette!

1/8 Page: \$25/month or \$250/year

1/4 Page: \$40/month or \$400/year

1/2 Page: \$70/month or \$700/year

Full Page: \$125/month or \$1250/year

Published by Train Mountain Railroad

P.O. Box 438

Chiloquin, OR 97624

Email: [info@tmrr.org](mailto:info@tmrr.org) Phone: 541-783-3030

Contributors: TMRR BOD, Friends, TMI

Photos: Tom Watson



## Crater Lake Junction Travel Center

34005 Hwy 97 N, Chiloquin, OR 97624, 541-783-9800

The Crater Lake Junction Travel Center opened for business in 2010, and is owned by the Klamath, Modoc and Yahooskin Tribes. Open 24 hours a day and located just next door to Kla-Mo-Ya Casino as you enter, this travel center offers competitive fuel prices and many convenience items.

Travelers can fuel up with gas, diesel, or propane. Stop in for a snack or soda, or grab a quick meal featuring food to go or you can eat it there, Free Wi-Fi, a comfortable lounge with large screen TVs, laundry and shower facilities, and ATMs are all available.

# I AM NOT A ROBOT!

There have been a few changes made to the member's site, specifically where payment information is entered. The most noticeable change is that we have added a question asking if you are a robot. You check the box and depending on a bunch of things, you may be asked to choose from a set of pictures. You may be asked to click the pictures that show street signs, or click on pictures that show store fronts. It seems silly, but the questions and challenges are carefully crafted and updated by Google, and have an amazing success rate at determining if the entity pressing the keys is a real person or a computer program ("robot") trying to gain access.

The technology is called "CAPTCHA", or in our case "reCAPTCHA" and is quickly being the standard for online protection against robots, which pose a real problem to web sites. This is replacing the (to me) very irritating practice of trying to figure out what letters and numbers they are showing in fuzzy text. If you have questions or problems getting around the new challenge (or if you are a robot!), feel free to give Joyce a call in the office.

Dale Furseth, "the computer guy"

## Volunteer Hours Reporting

Dale Furseth has worked his techie magic on the member's part of our website again. You can now report your monthly volunteer hours online. From the Train Mountain Railroad home page, click on "Online Member Resources: Join Train Mountain: Register for Meets", then on "Enter Volunteer Hours" or go there directly with this link:

[https://trainmtn.org/tmrrmembers/Member\\_VolunteerHours.aspx](https://trainmtn.org/tmrrmembers/Member_VolunteerHours.aspx)

Choose your name from the drop down menu, enter your total hours in the box that matches the month you are reporting your hours for and click on "Update Information" to submit them. So-o-o simple! We hope you enjoy using this new feature.

**Please submit your volunteer hours. If you work off site or at home on Train Mountain projects - these hours count.**



**REMEMBER: No job is complete without the paperwork!**

Please Volunteer at a Train Mountain Meet!

# NOTICES

## **Gazette PUBLICATION DEADLINE:**

Submissions to the Gazette must be received by the 15th of the month of publication. The fifteenth of the month is to be the last day to submit material. Material received after the 15th of the month may be held until the following month or rejected.

### **SUBMISSION CRITERIA**

Articles and ads may be submitted via a pdf file, MS WORD, Open Office, notepad, or similar text file attached to an email. The email SUBJECT line must include your article title and a date.

Please give each article a distinct file name with your name and a date. If everyone submits an article named "article for gazette" or something similar it will often get overwritten by another article with the same name when downloading. Articles sent as text in a email text will no longer be accepted.

Please use a common open source FONT such as ARIAL that can be displayed in all Browsers, and is easy to read. Please do NOT use the Calibri font, as we must take the time to convert it to Arial.

If your document has an embedded image, you must also include the image separately as a jpg,

## **Visitors to Train Mountain and YOU:**

Train Mountain is very popular and is continually attracting visitors from throughout the world. We announce that our hours are from 9:00 AM until 3:00 PM Monday through Friday during the summer, and 10:00 AM to 2:00 PM during the winter. The office is closed on weekends except during meets, and then only when volunteers are available to open the office.

Our insurance advisors request that all people (members and visitors) complete and sign a liability release. If **YOU** as a member encounter visitors on the property without a visitors pass please direct them to the office so that we can insure that a release has been completed and a visitors pass has been issued.

If **YOU**, as a member, open the gate and allow visitors to pass through - **YOU** are responsible to see that the release has been completed, and **YOU** are liable for them until they sign a release. Releases are available in the mailboxes near the office for those times when the office is closed. There are also releases available in the kitchen and in the Back Shop.

***If you do not want to, or do not have the time to, ensure that the releases are completed*** - then please graciously explain that the train park is closed to visitors and that the open hours are normally (Winter - 10:00 AM until 2:00 PM) (Summer - 9:00 AM until 3:00 PM) Monday through

## **Train Mountain is a NO SMOKING Facility**

**During recent events, many Members and their Guests have been ignoring this policy. There are only three designated smoking areas at Train Mountain:**

- (1) Outside the front of the Backshop**
- (2) Outside the east door of the Hall of Flags**
- (3) Outside the Motor Pool (Maintenance Building)**

**Due to the high fire danger at Train Mountain during the summer, we have zero tolerance for anyone smoking outside one of the designated areas.**

**There is NO SMOKING anywhere out on the track!**

**Members, Guests, and Visitors that continue to violate the Train Mountain Smoking Policy may be asked to leave.**

## **What is Amazon Smile?**

In a nutshell, it is a way for Train Mountain to receive 501c3 donations from Amazon. According to Amazon: AmazonSmile is a simple and automatic way for you to support your favorite charitable organization every time you shop, at no cost to you. When you shop at smile.amazon.com, you'll find the exact same low prices, vast selection and convenient shopping experience as Amazon.com, with the added bonus that Amazon will donate a portion of the purchase price to your favorite charitable organization. You can choose from nearly one million organizations to support.

When you go to Amazon Smile, choose Train Mountain Institute as your charity. In order for this to work, you must always start from Amazon Smile. Then all else is the same, your account, wish lists, etc. Also available is a direct link: <http://smile.amazon.com/ch/27-4031025> for the TMI account.

The AmazonSmile Foundation will donate 0.5% of the purchase price from your eligible AmazonSmile purchases. I found that just about everything I purchased lately is eligible.

If we can get a large number of Train Mountain supporters to take advantage of the Amazon Smile program, this could result in sizable donations to Train Mountain.

Click here for more information.

## **Gate Code**

**Due to security concerns, the Gate Code for the Train Mountain Main Gate may be changed at any time without notice. Any Member planning to arrive at Train Mountain when the Office is closed will need to contact the Office prior to arrival to ensure they have the current Gate Code.**

**The Gate Code was changed on March 24, 2020**

