



The Mountain GAZETTE

© 2022, Train Mountain

An Official Publication of the Train Mountain Institute and TM Railroad—Issue Vol. #4 Issue #43 **March**



March

This is the time period we affectionately call the “Double Digit” fidgets! What does that mean? If you look down at the bottom of the page we have **88 days to get er’ done!** What ever is going to be ready for the 2022 Triennial must be done in the next 88 days. We have Kitsap Week, Spring Awakening, and the Narrow Gauge Meet to get enough volunteers here for any big projects, but we have a ton of little projects that do not require large crews. If you are in the area and can spend some time here, we would love to have you give us hand. Just check in with the Office and we will let you know of various projects left to be done.

So if the weather is just slightly above **zero**, what should you be doing? Well a few of our members have been running a portable saw mill making lumber for the new Hope Circle picnic shelter. It was so cold, that the moisture in the logs was frozen so it kept popping blades, but they managed to cut a trailer load of timbers.

Our track wizard Dale has been relegated to being “shop” bound. So far he has made some safety chains, some rerailers, converted another loco from gas to electric, and many other jobs we have requested. Thanks Dale.

We have some key Chairman spots to fill so check in with the office if you are interested. Danny has volunteers on his list to work the various committees but he is still seeking a few guiding lights to take control of a couple of the committees. We have all of our regular annual fun projects plus getting ready for the Triennial. If you can help we would really appreciate it.

Registrations for the Triennial are continuing to come in. The Vendor area is almost full which is great news. Our manufacturers can use some words of encouragement and some orders from us, so plan on spending some time in the Vendor Barn, please.

Current count: 69 Steamers, 87 Gasoline, 13 Other, and 140 Electric for a grand total of 310 trains coming so far! I hope all those battery folks remember their extension cords and chargers! We should have a nice crowd of 574 Adults and 125 Kids and counting. That will make for a nice Triennial!

**Train Mountain Triennial
Work June 11-19 2022
Meet June 20-26 2022**

**88
And
Counting**

Join Train Mountain Now!

Register or Join - https://trainmtn.org/tmrrmembers/Member_Portal.aspx

The Mountain Gazette

Page:1

March 2022



Home with Track Access to TM for Sale

By: Jerry Crane



The Friends of Train Mountain is now selling a home near Train Mountain that has access to its main line track. The home is located on **3.78 acres** of land with a **double wide house with sun porch, detached garage and large shop building**. There is an easement to the home, on a gravel road, that connects to highway 62. A 7 ½" track loops into the property that connects to the TM main line near dam 3.5.

Friends of Train Mountain will be taking written bids of this property on June 30, 2022. The asking price is \$360,000. Jerry Crane will be at all of the spring Meets and the Triennial and will conduct tours of the property when requested. You can ask him for more details by emailing him at info.at.tmrr@gmail.com.



To learn more about the property please visit the Klamath County Tax Assessor's web tax lot finder map at

<https://kcgis.maps.arcgis.com/apps/webappviewer/index.html?id=664411956da94614a80be24849b74c1b>

and enter **218623** into the search window. Clicking on the shown parcel will display details about the property. If you click on the forth down button in the upper left corner of the screen and chose Imagery you will see an aerial view of the property. You can see the track looping on to the property in the middle of the south property line.



From the Desk of Train Mountain Railroad President - By Jeff Mills

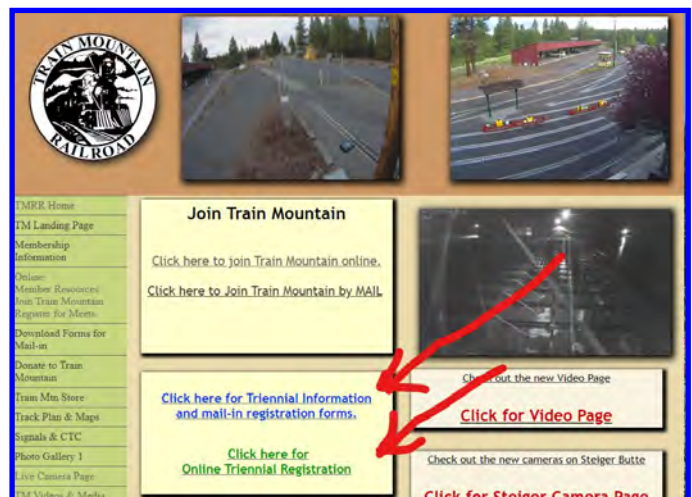
March finds us in the throes of early spring when the weather cannot make up its mind. As time passes it will reveal warm sunny days for which Train Mountain is famous. Preparations for adventures at Train Mountain are at hand. There is much to be accomplished first. Supplies must be obtained and equipment checked out. Travel plans including lodging, meals, and how to deal with the increase in fuel costs. In conversations with a few members, some are organizing carpools to share transportation costs. Be open to helping fellow members with this or other creative ways to reduce expenses if required.

Volunteers are essential to preparing for our 2022 run season. New track has replaced most of wooden ties on the Mainline. However, it will need to be raked and tuned. We will be inspecting and repairing any damage from the winter with an emphasis on the burned area left by the 242 Fire. Unknown at this time is how well did the track survive the winter weather. We are in uncharted territory as the vegetation is very different in this area. Until new trees are planted and take root, we will have to be vigilant on the condition of those tracks and drainage culverts.

Triennial VIII registrations are still coming in, so we are experiencing a train parking squeeze. Parking with electrical connections is in very short supply. Dean Willoughby has done a masterful job of playing Train Chess but empty spots are becoming scarce. Be aware, if you have an electric in the back of Containerville, you will have to use the electrical connection in your container for charging. Please contact Dean at tm.trackassignment@att.net if you are willing to share a container track with visiting electrics.

Danny Chamrad is already signing up volunteers for the daily 2-hour shifts. He contacts all Triennial attendees with an email and a request to volunteer. Danny can be contacted at djc2jr@hotmail.com. Volunteering makes the Triennial a great event and cannot happen without your help.

The main page of the Train Mountain Railroad website has been changed to aid in finding Triennial Information and Triennial Registration. On the home page, top center, is now a box with links to this information. Before calling the Train Mountain Office, please go to this resource to find answers to your questions. Another resource is the Train Mountain Encyclopedia. While this document is undergoing a complete rewrite, there is still a lot of important information in it. We need to do what we can to relieve unnecessary calls to the TM Office when the answers are right there on our Website!



The 2022 season will open with the Kitsap Live Steamers Work Week. Lodging is available for free for the KLS Work Week April 9th through 15th only! Space is first-come and must be reserved by calling the TM Office at 541-783-3030. You will be sharing a room to make best use of the facility. You do not have to be a TMRR member or a member of KLS to participate. There is NO MEET FEE to attend which is a great way to get back into the “swing” of things at Train Mountain. A liability release form and viewing the safety video is all that is required. We will keep you busy so bring your work gloves and a can-do attitude. For more information, contact Jeff Mills at

oldcatd399@hotmail.com.

March Report

an article by Dennis Ward—Track Superintendent

COVID-19 stood in the way of my February article. I tested positive for the disease on 11 February and have not completely recovered. I was never hospitalized.

Enough about me. What is going on in the track shop? Ron Green, with help from Larry DaBroi, continues building track panels. Charlie Bill Schubert is machining switch components and rebuilding some reclaimed aluminum switches. We now have enough switch components to build twenty switches. One or two a day on short notice.

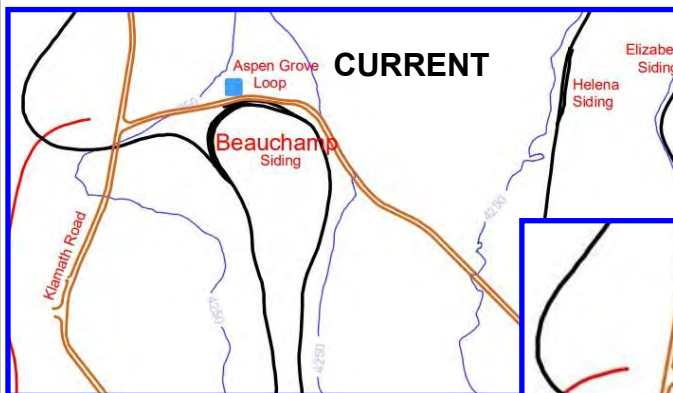
Dale Furseth, amongst others, has proposed extending the route, which currently runs from Witcombe Wye to Beauchamp Siding in Aspen Grove, to a termination on the Elizabeth River Loop. The route would be disconnected at Beauchamp and rerouted to Elizabeth River at a point where a switch was installed years ago (2006) for a return route from Railroad Ridge.

The “Douglas Cut-off” would result in all traffic through Aspen Grove beginning at the switch just past Douglas Siding.

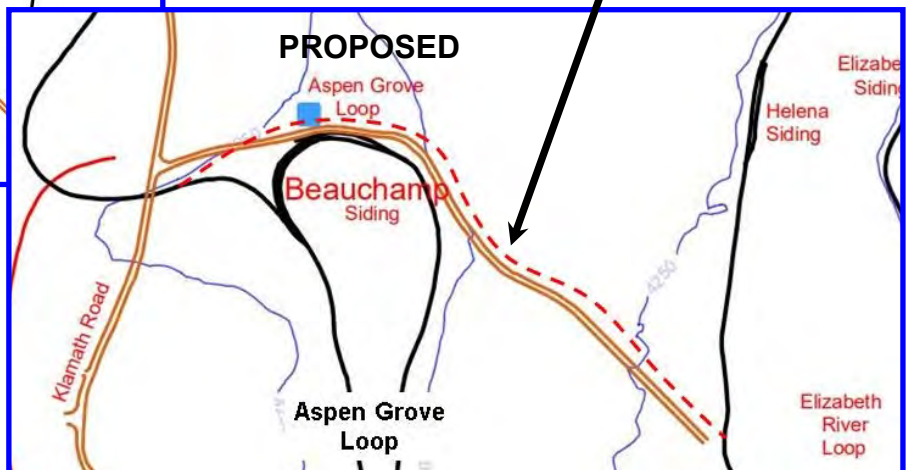


I believe this would be a great Big Build project. The dirt work, estimated as not more than three days, would be completed beforehand.

Used rail sales continue as does the giveaway of the used wooden ties and used tie plates and screws. If you want to purchase the used rail I have a volunteer who will bundle and set your purchase aside awaiting your arrival for pickup. We do not deliver.



Proposed new track would allow travelers to use the whole route around the Aspen Grove Loop.



HOPE SHELTER PROJECT MARCH UPDATE

The Hope Shelter Committee (HSC) has been busy during this past month. The permit for the shelter has been approved and acquired.

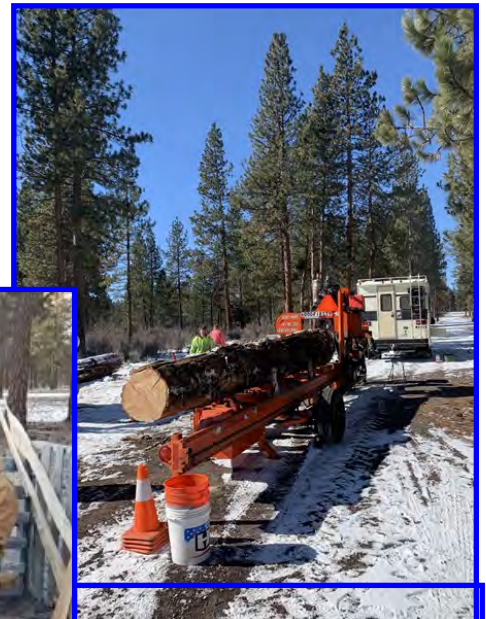
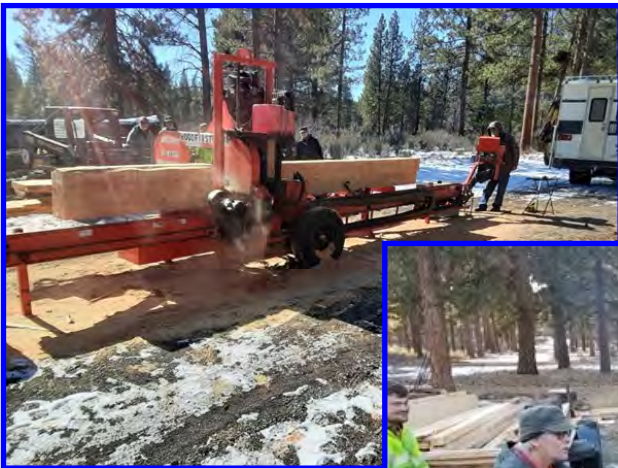
A sawer came to Train Mountain, and the majority of the wood (cedar logs) are milled. Thanks to all who came out and assisted with moving the logs and wood, as the milling was being done.

The carpenter shop at the motor pool is currently being utilized for the fabricating process. Committee members are currently making the templates to assist with fabrication.

If interested in donating to the Hope Shelter Project, please mail a check (made out to Train Mountain) to: P.O. Box 438, Chiloquin, OR. 97624. Please make sure you note on the check the donation is for the Hope Shelter Project.

Volunteers for this project will also be needed. If you are interested, please contact Gil Dominguez via email: gilnjanet@mac.com or via phone: (916) 616-3949.

Thank you!



Santa Fe Type Rear Copula Caboose Kits For Sale

Kitsap Live Steamers of Washington state have **three (3) Caboose kits** available to construct a Santa Fe Type Rear Copula Caboose. These kits **include all the body and frame parts plus drawings with instructions.** Not included are the trucks, couplers, and detail parts such as grab irons. Detail it to become your dream caboose.

Kits will be available for **pick up at Train Mountain** after April 9th through the 2022 Triennial in June. We **will not ship** these kits.

Kits are selling for **\$750.00 - \$300.00 down payment will reserve a kit** with balance due upon pick up. Checks, Money orders or cash will be accepted for payment. Do not delay, reserve your kit today.

Drawings and instructions can be e-mailed if you want to get an early start on this project.

Contact Jeff Mills at oldcatd399@hotmail.com or 253-740-6013.

Illustrated completed Caboose are not for Sale. They are for the purpose of showing a completed caboose or two.



SEASON REOPENING
Memorial Day weekend
Saturday May 28th 2022
Hours 10-3

The Klamath and Western Railroad will be reopening for another of their terrific public ride seasons. They need some help and they need it across the board. They need meeters and greeters, diner help, gift shop help, and of course engineers and conductors. You do not need to own a train to participate, they have the trains ready to go and they will provide the training. In addition they need some help in getting ready for their season opener and that includes some yard work (IE raking and hauling) and some general overall cleanup. So if you would like to help them out please check out their website for contact information.

<https://knwrr.org/>

Train Mountain Passport Game for the 2022 Triennial

Good Day to you from the Passport Game committee members, Sabra Rickman and Jim Helwig. As you may remember at the 2018 Triennial we partnered up with Fremont Winema Forest Service to feature Smokey the Bear as a statuette in our passport game. For 2022 we have taken on the challenge of finding another Passport Game statuette. We chose "Sly Fox and Birdie." They represent Operation Lifesaver (OL). OL's slogan is "When You See Tracks, Think Train." We felt this is a good match since both organizations represent trains. We still may have Smokey visit as well at some point during the week of Triennial.

"Sly Fox and Birdie" interact with each other on train safety. We are using this duo in a statuette in the Passport Game which requires you to spot them as you travel by train. Russ Wood will again be creating the wooden statuette which will be placed just off the tracks in a different location each morning for five consecutive days. You have to find them, take a self image picture with them and share it with us by the end of each day. Want to travel? We all do and sometimes you need a passport. You have to sign up and receive a Train Mountain Passport to play the game. It will be a lot of fun! And there will be prizes and giveaways.

Did someone ask what the **grand** prize will be? The prize for the 2022 Triennial is (a drum roll please) two tickets to the world famous Grand Canyon Railway Adventure tour of the Grand Canyon. When I contacted the Grand Canyon Railway they were happy to send us the tickets. The grand prize will be awarded at 4 pm on Friday.

We still have a lot of work to do. When we figure out the how to do's, we will let you know in upcoming gazette. ALL ABOARD!

Fresh Supplies Available in Company Store

Dale and crew have been busy while the ground is still too frozen to do track work. Back in stock are Safety Chains, Rerailers, and a couple of Snow Plows. Call the office to get yours reserved for pickup. We will not ship the rerailers or the plows. Pick up at Train Mountain only.



A Call for Volunteers

Jeff Pape Safety Inspection Committee.

One of the key positions to fill for the upcoming Triennial is the Safety Inspection Committee. All trains departing Central Station stop for inspection before departing onto the railroad via Grand Junction. At this point a volunteer looks the train over for the usual required things such as safety chains, red flag, communications device and so forth. It is usually done quickly and easily.

Sounds trivial but the process contributes to safe operations at the busiest time in the life of Train Mountain. The work is pleasant and not rigorous. Normally the trains and participants are scattered all over 2200 acres with many miles of main line and one only sees a couple at a time.

When working as part of the safety check team you get to see *every one and all trains*. It is a lot of fun. We usually have a pop-up tent and a couple of chairs for the periods of low traffic. Please keep this volunteer job in mind when you are planning your participation at the Triennial this June.

You can volunteer through the volunteer coordinator.



Kitsap Work Week 2022 (April 9-15)

By Jeff Mills

The Kitsap Work Week will be April 9th Through April 15th this year. We will be working on various projects in anticipation of the 2022 Triennial. Jerry Crane will be the Volunteer Coordinator for this work week and we will hold the usual morning volunteer meetings to assign volunteers to various tasks.

Lodgings will be provided on a first come basis and you may need to share a room. Camp Sites are available Hook ups are limited.

The local residents look forward to this work week as it is a sure sign winter is over and they can recover from winter's cabin fever.

You do not have to be a KLS or TM member to participate in this work week, all volunteers are welcomed. You will need to sign the provided liability wavier and view the TM Safety video on our website. This is a great time to come to Train Mountain and volunteer **without** having to **pay a meet fee**.

Please Contact Me at oldcatd399@hotmail.com or 253-740-6013. If you need to reserve a room please call the TM Office at 541-783-3030 Monday through Friday between 10 :00 AM and 3:00 PM

Greetings from Joyce at the front office:

March is bringing a mix of weather: A little snow here, a little snow there, sunny blue skies, cloudy skies, high winds, some calm air, chilly nights, chilly mornings and some warmer days.

I see Russ filled in for me on the front office Gazette article for last month. It was so nice of him to cover the office while I took a great vacation in sunny southern California. My travel to and from on Amtrak was a relaxing and scenic adventure, too! My ride-by photographs, not as good. That's the nice thing about digital cameras—the "film" is free and the disc space is plenty!

Since I didn't write my article last month, I am including a few late January & February entries here: In late January/early February, seeing a live deer (not the metal silhouette one) on the property was a reassuring reminder of the wild-life and its beauty roaming about the Train Mountain property.

Steve Lilly and Jim Eakin were here on January 25th dropping off the Lilly house for Lillyville. For a scale size, it is a BIG home complete with little outdoor lanterns, nice trim and real solar powered indoor lighting. (Now how on earth did an old time town have solar power--the modern kind, not the sunshine through the windows kind?) I get the solar heating (sunshine through the windows) part, but the solar lighting... Hmm... Maybe solar power has been around a lot longer than any of us knew? The BIG small scale house is large enough that I have teased Steve and Jim about using it to take my lunch breaks in though it is certain I would never fit through the front door!

Steve and Jim dropped off more small buildings, fences and other things for Lillyville, too. Mayor Lilly and Jim are doing a fantastic job on Lillyville. It is absolutely the fastest growing town (or maybe I should say city) along the tracks! More shacks and animals will be arriving soon. The number of hours these two continue to put into this project is absolutely astonishing. If you know or see them, be sure to thank them for all of their great work.

We are now at 442 memberships with 797 members. Over 600 people are registered for the Triennial. These numbers continue to rise. It is only a few short months until the Triennial. If you haven't signed up yet, be sure to sign up soon! The rates for the Triennial go up again on April 1st.

We are sorry to report that Delores Bartholomew who has always done such a fantastic job with the store during the Triennials and other summer meets has passed away and will not be here with us this Triennial. Our thoughts and condolences go out to her husband, Frank, her family and friends.

Trustworthy volunteers to man the Company Store during the Triennial are much needed. The more two hour shifts we can fill for it, the more free time there is for outdoor fun. If you are interested, please call me at 541-783-3030.

If you have nice railroad themed consignment items you would like to sell in The Company Store, you can also contact me or Tom Watson at 541-783-3030. I am hoping to get some new and unique items into the store especially for the upcoming Triennial, and for other times, too.



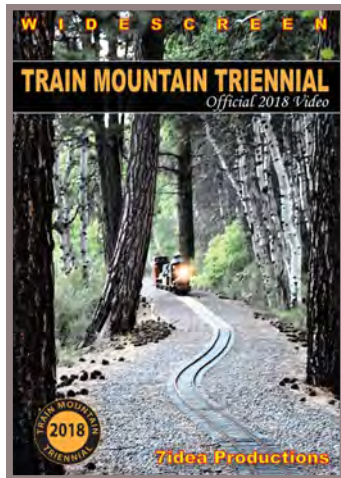
2022 Train Mountain Train Meet Schedule

	Polar Bear Train Meet	Spring Awakening Train Meet	Narrow Gauge Train Meet	Triennial Train Meet	Operations Train Meet	Big Build Train Meet	Fall Colors Train Meet
Work Week	none	4 /30 to 5 /5	5 /21 to 5 /26	6 /11 to 6 /19	7 /23 yo 7 /27	9/3 to 9 /8	none
Meet	1 /14 to 1 /16	5 /6 to 5 /8	5 /27 to 5 /29	6 /20 to 6 /26	7 /28 to 7/31	9 /9 to 9 /11	10 /7 to 10 /10

CLASSIFIEDS

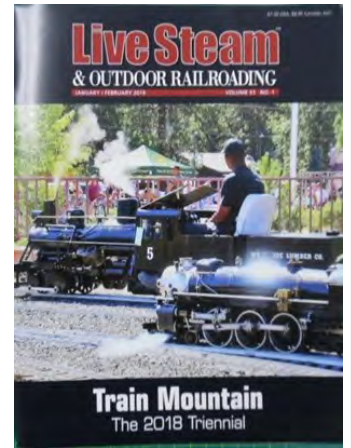
2018 Triennial Video Now Available

The 2018 Train Mountain Triennial video from Aaron Benson at 7Idea Productions is now available. You can order online at the link shown or you can call the office at 541-783-3030 to get your copy. This is a most enjoyable video created by a true video artist and of course it just happens to be about our most favorite subject! The cost of the video is just \$29.95, quite a bargain!



Our good friend Jim over at Discover Live Steam has placed ads for us on his terrific website, thanks Jim. discoverlivesteam.com

Did you see the great article and front cover story from the January / February 2019 issue of Live Steam and Outdoor Railroading? It is a great article covering the 2018 Triennial. and the great gang of folks that hang around the place and put on terrific live steam trainmeets. As an added bonus there is a photo album by member Michelle Moore! How about that! Pretty cool!



Crater Lake/ Train Mountain Vacation Rentals

Crater Lake Chalet

Located on Hwy 422, only 1 mile off Hwy 62 and 2 miles from Hwy 97 in the Chiloquin area. This house is at north end of Train Mountain and contiguous to Train Mountain.



This comfortable house sits on 35 beautiful acres. 2 bedrooms and 2 bathrooms. Can sleep up to 6 people.

Panoramic View Ranch House / Crater Lake

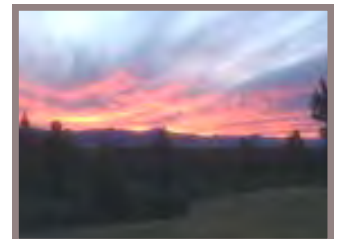
This ranch house is located on Hwy 62, and attaches to the west side of Train Mountain.

The 56 acres, panoramic views of Agency Lake and



the Cascades. Enjoy a peaceful and private experience. 4 bedrooms and 2 bathrooms.

Can sleep up to 8 people.



For more information please call: **Julie 415-756-3943** or **Mike 415-420-9026**

10% off for train mountain members

www.getawayvacationhome.com

Please Volunteer at a Train Mountain Meet!

CLASSIFIEDS

THE POTBELLY CAFE



Located only 1.5 miles off Hwy 97 in Downtown Chiloquin in the same building as the Post Office 212 1st Avenue, Chiloquin, OREGON 97624 -- Phone: (541) 783-0988



Good Service
Good Food
Friendly Folks



Crater Lake Junction Travel Center

34005 Hwy 97 N, Chiloquin, OR 97624, 541-783-9800

The Crater Lake Junction Travel Center opened for business in 2010, and is owned by the Klamath, Modoc and Yahooskin Tribes. Open 24 hours a day and located just next door to Kla-Mo-Ya Casino as you enter, this travel center offers competitive fuel prices and many convenience items.

Travelers can fuel up with gas, diesel, or propane. Stop in for a snack or soda, or grab a quick meal featuring food to go or you can eat it there, Free Wi-Fi, a comfortable lounge with large screen TVs, laundry and shower facilities, and ATMs are all available.

WE ARE ALL VOLUNTEERS

DON'T YELL AT ME, I AM A VOLUNTEER!

HAVE SOMETHING YOU WANT TO SELL?

Place an ad in the Gazette!

1/8 Page: \$25/month or \$250/year

1/4 Page: \$40/month or \$400/year

1/2 Page: \$70/month or \$700/year

Full Page: \$125/month or \$1250/year

Published by Train Mountain Railroad

P.O. Box 438

Chiloquin, OR 97624

Email: info@tmrr.org Phone: 541-783-3030

Contributors: TMRR BOD, Friends, TMI

Photos: Tom Watson



Please submit your volunteer hours. If you work off site or at home on Train Mountain projects - these hours count.



REMEMBER: No job is complete without the paperwork!

I AM NOT A ROBOT!

There have been a few changes made to the member's site, specifically where payment information is entered. The most noticeable change is that we have added a question asking if you are a robot. You check the box and depending on a bunch of things, you may be asked to choose from a set of pictures. You may be asked to click the pictures that show street signs, or click on pictures that show store fronts. It seems silly, but the questions and challenges are carefully crafted and updated by Google, and have an amazing success rate at determining if the entity pressing the keys is a real person or a computer program ("robot") trying to gain access.

The technology is called "CAPTCHA", or in our case "reCAPTCHA" and is quickly being the standard for online protection against robots, which pose a real problem to web sites. This is replacing the (to me) very irritating practice of trying to figure out what letters and numbers they are showing in fuzzy text. If you have questions or problems getting around the new challenge (or if you are a robot!), feel free to give Joyce a call in the office.

Dale Furseth, "the computer guy"

NOTICES

Gazette PUBLICATION DEADLINE:

Submissions to the Gazette must be received by the 15th of the month of publication. The fifteenth of the month is to be the last day to submit material. Material received after the 15th of the month may be held until the following month or rejected.

SUBMISSION CRITERIA

Articles and ads may be submitted via a pdf file, MS WORD, Open Office, notepad, or similar text file attached to an email. The email SUBJECT line must include your article title and a date.

Please give each article a distinct file name with your name and a date. If everyone submits an article named "article for gazette" or something similar it will often get overwritten by another article with the same name when downloading. Articles sent as text in a email text will no longer be accepted.

Please use a common open source FONT such as ARIAL that can be displayed in all Browsers, and is easy to read. Please do NOT use the Calibri font, as we must take the time to convert it to Arial.

If your document has an embedded image, you must also include the image separately as a jpg,

Visitors to Train Mountain and YOU:

Train Mountain is very popular and is continually attracting visitors from throughout the world. We announce that our hours are from 9:00 AM until 3:00 PM Monday through Friday during the summer, and 10:00 AM to 2:00 PM during the winter. The office is closed on weekends except during meets, and then only when volunteers are available to open the office.

Our insurance advisors request that all people (members and visitors) complete and sign a liability release. If **YOU** as a member encounter visitors on the property without a visitors pass please direct them to the office so that we can insure that a release has been completed and a visitors pass has been issued.

If **YOU**, as a member, open the gate and allow visitors to pass through - **YOU** are responsible to see that the release has been completed, and **YOU** are liable for them until they sign a release. Releases are available in the mailboxes near the office for those times when the office is closed. There are also releases available in the kitchen and in the Back Shop.

If you do not want to, or do not have the time to, ensure that the releases are completed - then please graciously explain that the train park is closed to visitors and that the open hours are normally (Winter - 10:00 AM until 2:00 PM) (Summer - 9:00 AM until 3:00 PM) Monday through

Train Mountain is a NO SMOKING Facility

During recent events, many Members and their Guests have been ignoring this policy. There are only three designated smoking areas at Train Mountain:

- (1) Outside the front of the Backshop**
- (2) Outside the east door of the Hall of Flags**
- (3) Outside the Motor Pool (Maintenance Building)**

Due to the high fire danger at Train Mountain during the summer, we have zero tolerance for anyone smoking outside one of the designated areas.

There is NO SMOKING anywhere out on the track!

Members, Guests, and Visitors that continue to violate the Train Mountain Smoking Policy may be asked to leave.

What is Amazon Smile?

In a nutshell, it is a way for Train Mountain to receive 501c3 donations from Amazon. According to Amazon: AmazonSmile is a simple and automatic way for you to support your favorite charitable organization every time you shop, at no cost to you. When you shop at smile.amazon.com, you'll find the exact same low prices, vast selection and convenient shopping experience as Amazon.com, with the added bonus that Amazon will donate a portion of the purchase price to your favorite charitable organization. You can choose from nearly one million organizations to support.

When you go to Amazon Smile, choose Train Mountain Institute as your charity. In order for this to work, you must always start from Amazon Smile. Then all else is the same, your account, wish lists, etc. Also available is a direct link: <http://smile.amazon.com/ch/27-4031025> for the TMI account.

The AmazonSmile Foundation will donate 0.5% of the purchase price from your eligible AmazonSmile purchases. I found that just about everything I purchased lately is eligible.

If we can get a large number of Train Mountain supporters to take advantage of the Amazon Smile program, this could result in sizable donations to Train Mountain.

[Click here for more information.](#)

New Gate Code

Due to security concerns, the Gate Code for the Train Mountain Main Gate may be changed at any time without notice. Any Member planning to arrive at Train Mountain when the Office is closed will need to contact the Office prior to arrival to ensure they have the current Gate Code.

Get New Gate Code—Call Office 541-783-3030

