



The Mountain GAZETTE

© 2024, Train Mountain

An Official Publication of the Train Mountain Institute and TM Railroad—Issue Vol. #5 Issue #21 **April 2024**

April

Hello everyone,

Spring is more or less upon us, at least in most areas reached by this fine publication. Tracks will be opening soon. If you have photos from opening day, we'd love to publish them. If you're irresponsibly excited about your track opening, just know you're not alone.

We have an important article on etiquette in this issue. Some of you may recognize it as a repeat from a previous issue. It is still germane and important. Please, we're all here to enjoy ourselves; comport yourself accordingly.

Train Mountain is selling a couple of very cool things: land and a steam train. Check out the listings. We also have more from Joyce; an article on a new way to sign up for volunteer shifts; and sad news about the Blue Caboose campground upgrade.

Get out and drive! Enjoy your spring, and Mother's Day for those of you to whom it applies.

Cheers,

Lucinda Gilman and Xander Geraghty

Lucindagilman@gmail.com

2024 Train Mountain Train Meet Schedule

	Polar Bear	Spring Awakening	Narrow Gauge	Ops Meet	Summer Meet	Big Build	Fall Colors
Work week		4/27-5/2	5/25-5/30	6/22-6/26	7/27-8/1	8/31-9/5	
Meet	1/13-1/15	5/3-5/5	5/31-6/2	6/27-6/30	8/2-8/4	9/6-9/8	10/4-10/7

Join Train Mountain Now!

Register or Join - https://trainmtn.org/tmrrmembers/Member_Portal.aspx
The Mountain Gazette

Page:1

April 2024

Train Mountain Etiquette 2024

Jeff Mills, TMI Visitor Operations

During the last season, I received complaints about many inappropriate actions or behaviors of our members. These **complaints reflect directly on Train Mountain**. I am troubled I must remind anyone of this. We were all taught how to **behave politely** in elementary school.

Swearing in public areas. This has been brought to my attention more than once. The **use of foul language is not acceptable in the presence of the public**. Better still do not to use swear words at all. There is always a respectable word which can be substituted.

Yelling at others. I have had reports of members yelling at visitors, employees yelling at members, and members yelling at employees. In other instances, members angrily shouting at members. I know everyone has a level of passion for Train Mountain. However, **yelling fails to make your point of view legitimate**. It shows visitors that we are in conflict and unable to provide a good experience for their visit.

Disobeying directions by volunteers. Once the season starts, we will be **open on Saturday and Sundays**. On Saturday, a volunteer stays **at the main entrance gate to direct visitors to K&W for train rides or** direct them to the **Visitors Center** for check in. These volunteers have a purpose vital to our operations. There are other times when we may have volunteers directing traffic or other necessary tasks. They have your safety and well-being in mind. **Treat them** how you would like to be treated, **respectfully**.

Parking. We must have **easy parking for visitors**. I have seen visitors pull into our parking area and not be able to find a parking spot, then leave. That is possible **donations** driving out of our Railroad Park. During hours we are now open to the public (**9am to 3pm**), do not park in front of Central Station. During Meets, do not park in the parking area in front of Vendor Barn.

Members' equipment parked in the yards. Our volunteers cannot provide constant vigilance over equipment parked in the yards. As a member, if you see a visitor on or touching members' equipment, please ask them politely to stop and explain that it is privately owned. If they do not cease, please do not become aggressive to them. **Contact the Visitor Center** to help handle the situation.

Failure to follow the Safety Rules. The Train Mountain Safety Rules are simple, thus easy to understand and follow. **The rules most often ignored are following too close, lack of safety chains, flagging and no conductor**. Not following these rules can result in equipment damage and injury. This is clearly explained **in the Safety Video** we review every year.

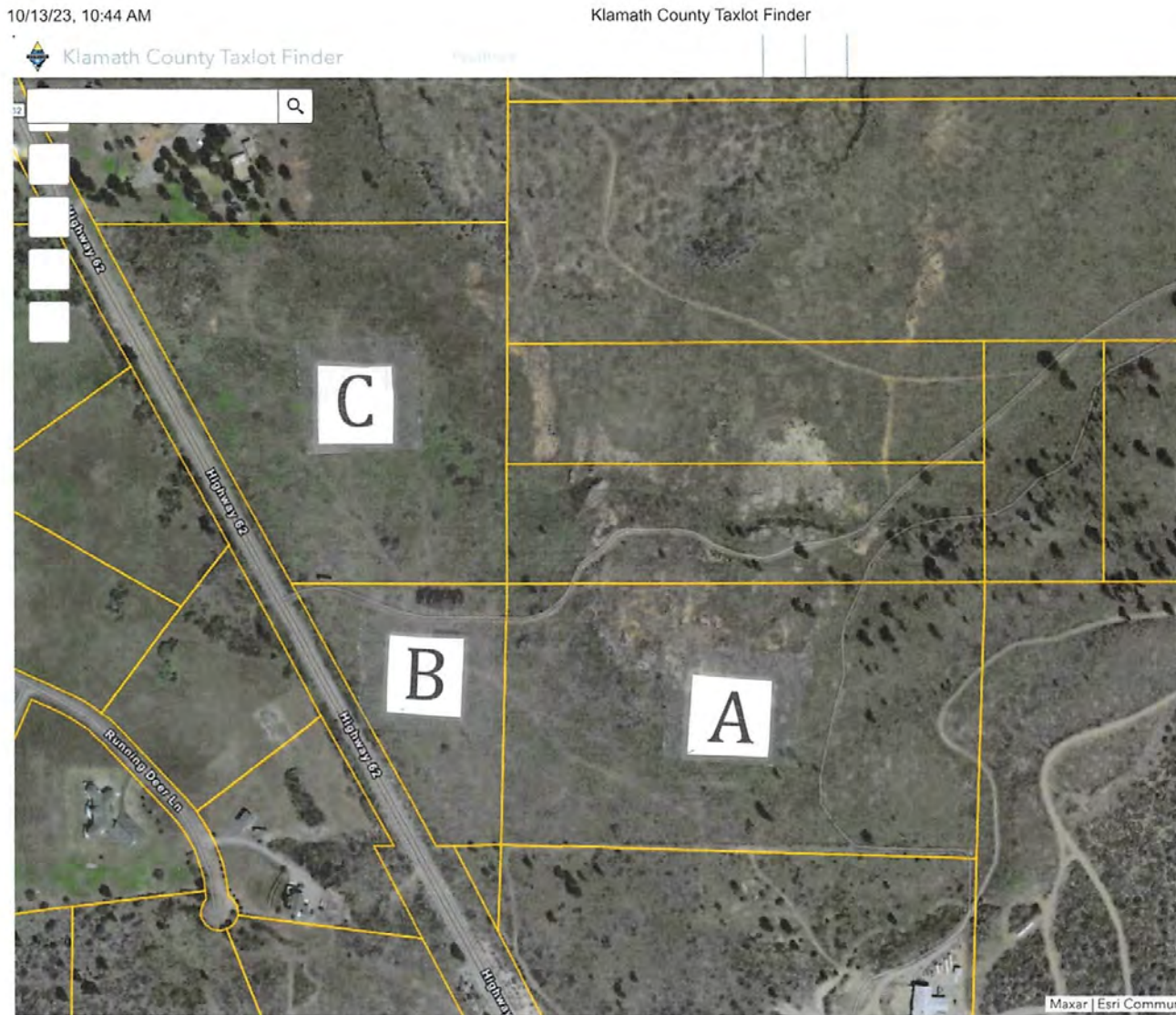
Signal Blocks. Over-running RED signal lights is an **awareness issue**. It was a common error at the OPS Meet. The engineer must be aware of **signal indications**. Do not pass the signal before the route selector is operated. When the control tower is in operation, do not proceed before clearance is granted. This is also **made clear in the annual Safety Video**.

Good behavior and conduct seem simple, but they **go a long way toward improving interactions** among members, employees, and visitors. **As a non-profit we depend upon visitors' donations to keep Train Mountain operating**. Presenting a pleasant atmosphere by behaving civilly is **good for all of us**.

Train Mountain Selling Property

Jerry Crane

Train Mountain (TM) is selling three property lots to members. These lots are undeveloped, attached to TM and are located north of the Dobbs property next to Highway 62.



TM will be selling these properties through a direct sale. There will be no outside agents involved in the sale. The sale will be conducted by taking email offers from all those interested on each property on a designated date. The best offer on each property will then be posted for each property. A second round of offers will then be taken. Anyone can then drop out of consideration at that time or they can make an increased offer. This procedure will continue until no new offers are received. The individual with the highest offer will then be sold the property at the price of their last offer. TM reserves the right to reject any or all offers.

There is track running from TM's main track to the top of property "A". This is the loop as seen on the map on the east end of that property. Access to the TM main line will be allowed at this point. Any track access from properties "B" and "C" will require an easement across property "A".

Jerry Crane will be conducting tours of the properties during the Spring Awakening and Narrow Gauge meets. He will be providing more details on the properties at that time. The date for the first round of offers will be set at that time.

To learn more about each property please visit the Klamath County Tax Assessor's [web tax lot finder map](#) and enter the Klamath County property ID number into the search window. Left click on the property for extended information on each property.

The Klamath County Assessor's property ID numbers are:

- "A" – 218954
- "B" – 872045
- "C" – 872044.

If you're interested, please find Jerry at one of those meets and/or email info@tmrr.org.

Spring!



Greetings from Joyce at the front office:

Once again Mother Nature is trying to decide whether it should be winter or spring at Train Mountain. We are getting a wide variety of temperatures which fluctuate day to day and there are clear sunny days interspersed with cloudy rainy days.

The daffodils are back in bloom big time, the chives and mint are growing back and things are green. I think Spring is winning out over Winter.

The Kitsap crew was recently here for their work week. One of the key projects among many was the removal of the old gas heating appliances in the downstairs guest rooms and in the Visitor Center. The walls where the heating appliances had been were repaired and painted inside. The new electrical heat pumps were installed last year and are working nicely in the downstairs rooms.

Theresa and Jeff Shelby, new lead volunteers of the Carpenter Shop, have done a wonderful job of cleaning it up and clearing out anything that didn't belong there.

Our visitor traffic has increased with spring breaks and the sunnier days. April's visitors hail from Washington, Missouri, Arizona, Texas, Vermont, Idaho, Nevada, Texas, Oregon and California. David has pulled out one of the tour trains for the visitors on the nicer days. They are really enjoying the tours!

Planning for the 2025 Triennial meet is moving forward.

Thanks to Dale Furseth, the Badge printer is now automatically and correctly printing regular meet and all meets badges as members register. Dale is now working on finding a Chromebook where anyone signing up after they arrive can enter their information at the office counter and pay. Once you are signed up and paid, your meet badge(s) should automatically print within 10 to 30 minutes afterward, whether you pay online or through the office. That is a huge change from all of the rigmarole that was previously required to get a meet badge printed.

2024 Membership is now at 279, with 478 members including all primary and family members. These numbers continue to grow almost daily. For those who have already renewed or joined, thank you. For those who would like to join or renew, you can always do so online, in the office or by mail.

April has been proving to be a busy month. It will get busier and busier as the warmer months approach.

For all of those who are moms and reading this, Happy Mother's Day on May 12th!



Some Bad News

Jerry Crane

Unfortunately, Train Mountain Institute has to announce the cancelation of the project to upgrade the Blue Caboose camping area. A project to upgrade the camping area to 25 sites with full hookups cannot be completed because of the projected cost for the project.

Permits for septic systems for new camp grounds are issued by the Oregon Department of Environmental Quality. This agency just recently drastically increased the treatment standards for camp grounds. The cost for the equipment needed to install a new treatment system at Blue Caboose is projected to be about \$750,000. Train Mountain cannot afford this cost.

The project to install the new bathroom/shower unit in the Six Acre camping area will not require the installation of such an extreme treatment system. This project is still proceeding. We are awaiting the issuance of the septic permit for this project.

What's spinning on the turntable?

Johnny Cash

[Hey Porter](#)

This is the song that put Cash on the map. It was his first release, in 1954. It tells of his excitement to be coming home from the Korean war and taking the train back to his home in the South.

It's apt that both his first and last songs were about trains.



Volunteering just got more organized!

Debra Howard

What is VMS?

In today's world everything seems to be a three-letter acronym. VMS is no different but what it stands for may make all of our lives easier. VMS stands for Volunteer Management Software. I know sometimes it is very difficult to think tech solutions might make our lives easier but in this case we believe it will help us out a lot. We are doing a small sample run with VMS at this year's train meets. We are going to be experimenting with software called Sign Up Genius. This is a VMS software that is very affordable. Currently we are using the free version which means there are advertisements. Once we pay for the software there will be no advertisements. This software is safe and used by many people. We are hoping that the software/app will be user friendly. We will discover how friendly as the time goes on.

As we approach the first train meet, Spring Awakening, there will be Sign Ups! We will have different projects/tasks or what the software calls Sign Ups available to you. You can choose what project(s) you want to work on and when you will be available.

Why are we doing this? Why are we changing a system that already works? This is all in preparation for the Triennial. It could potentially make the rather imposing job of organizing hundreds of volunteers much easier. We all need to know if this software will work and if we like it. We need to know what is good and what is bad about it. You are being invited to help us in this evaluation. See you at Spring Awakening!

[Editor's note: My son's school uses this with parent volunteers and it works very well. One vote in favor.]

For Sale

Fulton RR 4-4-0 Locomotive with Tender and 2 Passenger cars

\$35,000 USD

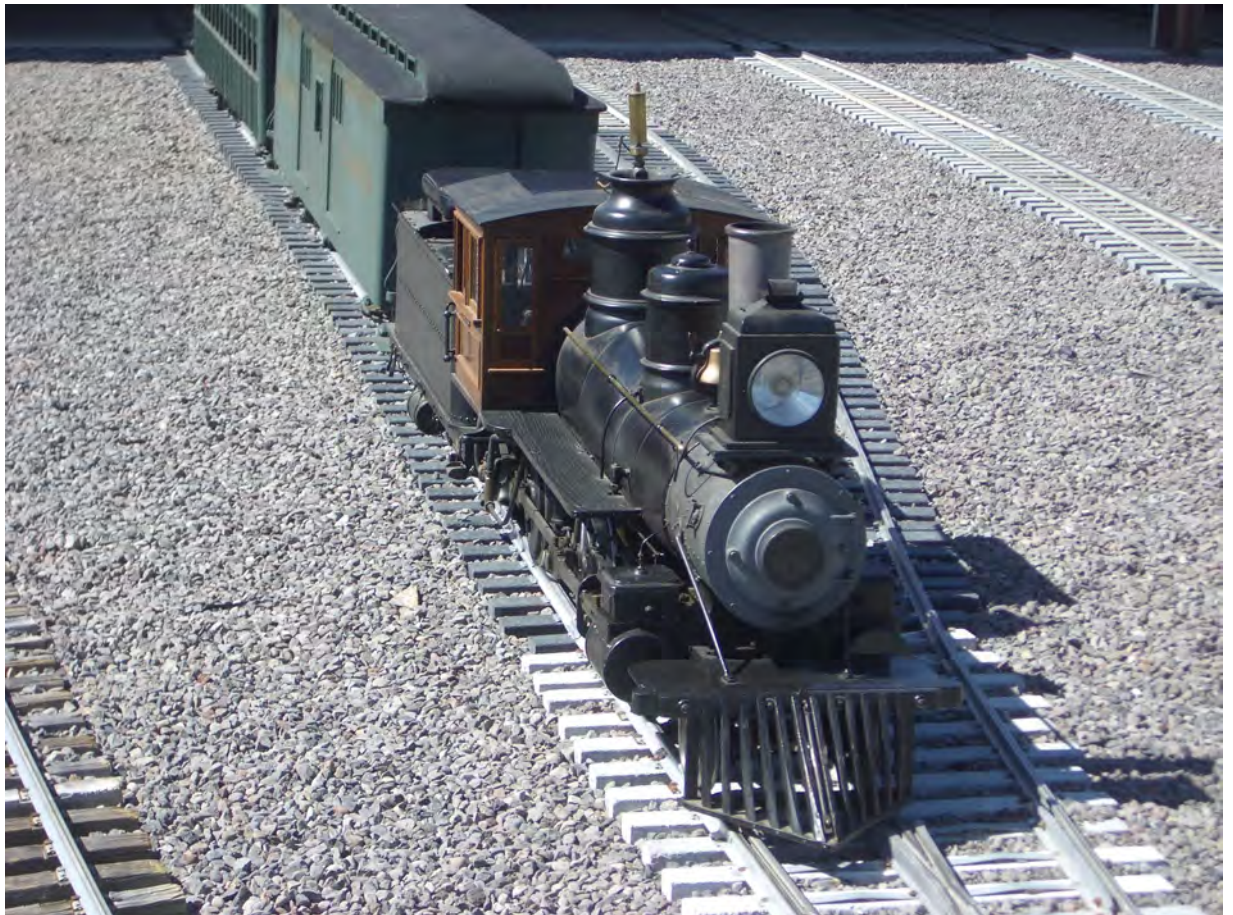
The engine is propane fired and runs very well. One car is a baggage car with provision for the propane tank, air compressor and battery. The other car is a passenger car with removable roof that allows passenger seating. In 2.5" to 1' scale 7.5" gauge.

This train set is of museum quality detail and was constructed by a group of distinguished builders. This engine is large for a 4-4-0 and is very capable. It deserves an owner's attention and admiration. More photos and video are available on request. (note: cars in the video are not included in the sale)

The train can be inspected at Train Mountain by appointment only. It's best to plan to view during the upcoming Train Mountain meets and work weeks. See the meet schedule on the Train Mountain Web site, (www.trainmtn.org).

Call the Train Mountain office for scheduling; ask for your inquiry to be sent to the Train Mountain Institute Board. Inquire during business hours only. This Train belongs to Train Mountain and proceeds will go to Train Mountain. Shipping and crating will be the responsibility of the buyer. FOB point would be Chiloquin, OR, 97624.

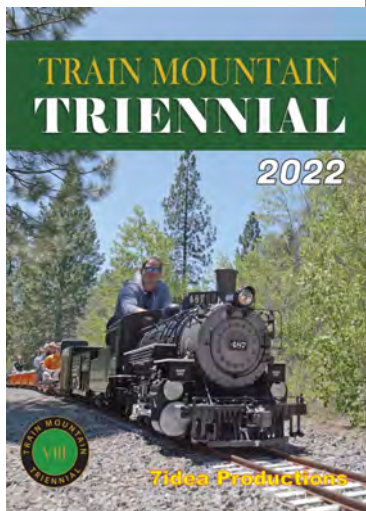
Reasonable offers will be considered.



CLASSIFIEDS

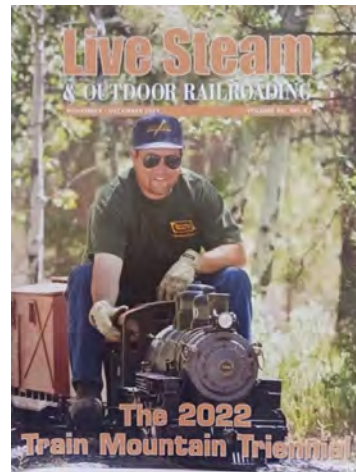
2022 Triennial Video Now Available

The 2022 Train Mountain Triennial video from Aaron Benson at 7Idea Productions is now available. You can [order online](#) or call the office at 541-783-3030 to get your copy. This is a most enjoyable video created by a true video artist and of course it just happens to be about our most favorite subject! The cost of the video is just \$29.95, quite a bargain! Videos of past Triennials are also available.



Our good friend Jim over at Discover Live Steam has placed ads for us on his terrific website, thanks Jim. discoverlivesteam.com

Did you see the great article and front cover story from the March / March 2024 issue of Live Steam and Outdoor Railroading? It is a great article covering the 2022 Triennial, and about the great gang of folks that volunteer at Train Mountain and put on terrific live steam train meets. Pretty cool!



Crater Lake/ Train Mountain Vacation Rentals

Crater Lake Chalet

Located on Hwy 422, only 1 mile off Hwy 62 and 2 miles from Hwy 97 in the Chiloquin area. This house is at north end of Train Mountain and contiguous to Train Mountain.



This comfortable house sits on 35 beautiful acres. 2 bedrooms and 2 bathrooms. Can sleep up to 6 people.

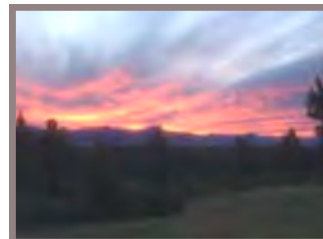
Panoramic View Ranch House / Crater Lake

This ranch house is located on Hwy 62, and attaches to the west side of Train Mountain. The 56 acres, panoramic views of Agency Lake and



the Cascades. Enjoy a peaceful and private experience. 4 bedrooms and 2 bathrooms.

Can sleep up to 8 people.



For more information please call: **Julie 415-756-3943** or **Mike 415-420-9026**
10% off for train mountain members

CLASSIFIEDS

The Potbelly cafe



Located only 1.5 miles off Hwy 97 in Downtown Chiloquin in the same building as the Post Office 212 1st Ave-



Good Service
Good Food
Friendly Folks



Crater Lake Junction Travel Center

34005 Hwy 97 N, Chiloquin, OR 97624, 541-783-9800

The Crater Lake Junction Travel Center opened for business in 2010, and is owned by the Klamath, Modoc and Yahooskin Tribes. Open 24 hours a day and located just next door to Kla-Mo-Ya Casino as you enter, this travel center offers competitive fuel prices and many convenience items.

Travelers can fuel up with gas, diesel, or propane. Stop in for a snack or soda, or grab a quick meal featuring food to go or you can eat it there, Free Wi-Fi, a comfortable lounge with large screen TVs, laundry and shower facilities, and ATMs are all available.

WE ARE ALL VOLUNTEERS
DON'T YELL AT ME, I AM A VOLUNTEER!

HAVE SOMETHING YOU WANT TO SELL?

Place an ad in the Gazette!
1/8 Page: \$25/month or \$250/year
1/4 Page: \$40/month or \$400/year
1/2 Page: \$70/month or \$700/year
Full Page: \$125/month or \$1250/year

Published by Train Mountain Railroad
P.O. Box 438
Chiloquin, OR 97624
Email: info.at.tmrr@gmail.com Phone: 541-783-3030

Contributors: TMRR BOD, Friends, TMI
Photos: Tom Watson



Please submit your volunteer hours. If you work off site or at home on Train Mountain projects - these hours count.



REMEMBER: No job is complete without the paperwork!



NOTICES

Gazette PUBLICATION DEADLINE:

Submissions to the Gazette must be received by the 15th of the month of publication. The fifteenth of the month is to be the last day to submit material. Material received after the 15th of the month may be held until the following month or rejected.

SUBMISSION CRITERIA

Articles and ads may be submitted via a pdf file, MS WORD, Open Office, notepad, or similar text file attached to an email. **The email SUBJECT line must include your article title and a date.**

Please give each article a distinct file name with your name and a date. If everyone submits an article named "article for gazette" or something similar it will often get overwritten by another article with the same name when downloading. **Articles sent as text in a email text will no longer be accepted.**

Please use ARIAL 12pt font—it can be displayed in all Browsers, and is easy to read. Please do NOT use the Calibri or Times New Roman font, as we must take the time to convert it to Arial.

If your document has an embedded image, you must also include the image separately as a jpg, png, or similar image file.

Please send all articles to lucindagilman@gmail.com.

Visitors to Train Mountain and YOU:

Train Mountain is very popular and is continually attracting visitors from throughout the world. We announce that our hours are from 9:00 AM until 3:00 PM Monday through Friday during the summer, and 10:00 AM to 2:00 PM during the winter. The office is closed on weekends except during meets, and then only when volunteers are available to open the office.

Our insurance advisors request that all people (members and visitors) complete and sign a liability release. If **YOU** as a member encounter visitors on the property without a visitors pass please direct them to the office so that we can insure that a release has been completed and a visitors pass has been issued.

If **YOU**, as a member, open the gate and allow visitors to pass through - **YOU** are responsible to see that the release has been completed, and **YOU** are liable for them until they sign a release. Releases are available in the mailboxes near the office for those times when the office is closed. There are also releases available in the kitchen and in the Back Shop.

If you do not want to, or do not have the time to ensure that the releases are completed, then please graciously explain that the train park is closed to visitors and that the open hours are normally (Winter - 10:00 AM until 2:00 PM) (Summer - 9:00 AM until 3:00 PM) Monday through Friday. To arrange other hours visitors should call the office at 541-783-3030.

Train Mountain is a NO SMOKING Facility

During recent events, many Members and their Guests have been ignoring this policy. There are only three designated smoking areas at Train Mountain:

- (1) Outside the front of the Backshop
- (2) Outside the east door of the Hall of Flags
- (3) Outside the Motor Pool (Maintenance Building)

Due to the high fire danger at Train Mountain during the summer, we have zero tolerance for anyone smoking outside one of the designated areas.

There is NO SMOKING anywhere out on the track!

Members, Guests, and Visitors that continue to violate the Train Mountain Smoking Policy may be asked to leave.

I've heard of that social media thing...

If you want to get Train Mountain information and pictures while you're waiting for the next gazette, follow and like us on these social media platforms:



YouTube

Facebook: [/trainmountainrailroad](https://www.facebook.com/trainmountainrailroad)

Instagram: [trainmountainrailroad](https://www.instagram.com/trainmountainrailroad)

Youtube: [trainmountainrailroad](https://www.youtube.com/trainmountainrailroad)

New Gate Code

Due to security concerns, the Gate Code for the Train Mountain Main Gate may be changed at any time without notice. Any Member planning to arrive at Train Mountain when the Office is closed will need to contact the Office prior to arrival to ensure they have the current Gate Code.

Get New Gate Code—Call Office 541-783-3030

Train Mountain Volunteer Hours

Name: _____

Month & Year: _____

Date	Project(s) Worked On	Number of Hours
Total Hours		

Total Hours

Volunteer Hours Reporting

Dale Furseth has worked his techie magic on the member's part of our website again. You can now report your monthly volunteer hours online. From the Train Mountain Railroad home page, click on "Online Member Resources: Join Train Mountain: "Register for Meets", then on "Enter Volunteer Hours" or go there directly with this link:

https://trainmtn.org/tmrrmembers/Member_VolunteerHours.aspx

Choose your name from the drop down menu, enter your total hours in the box that matches the month you are reporting your hours for and click on "Update Information" to submit them. So-o-o simple! We hope you enjoy using this feature.