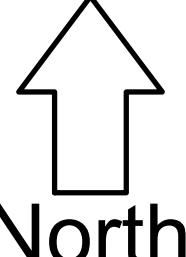


Train Mountain Railroad

March 10, 2016

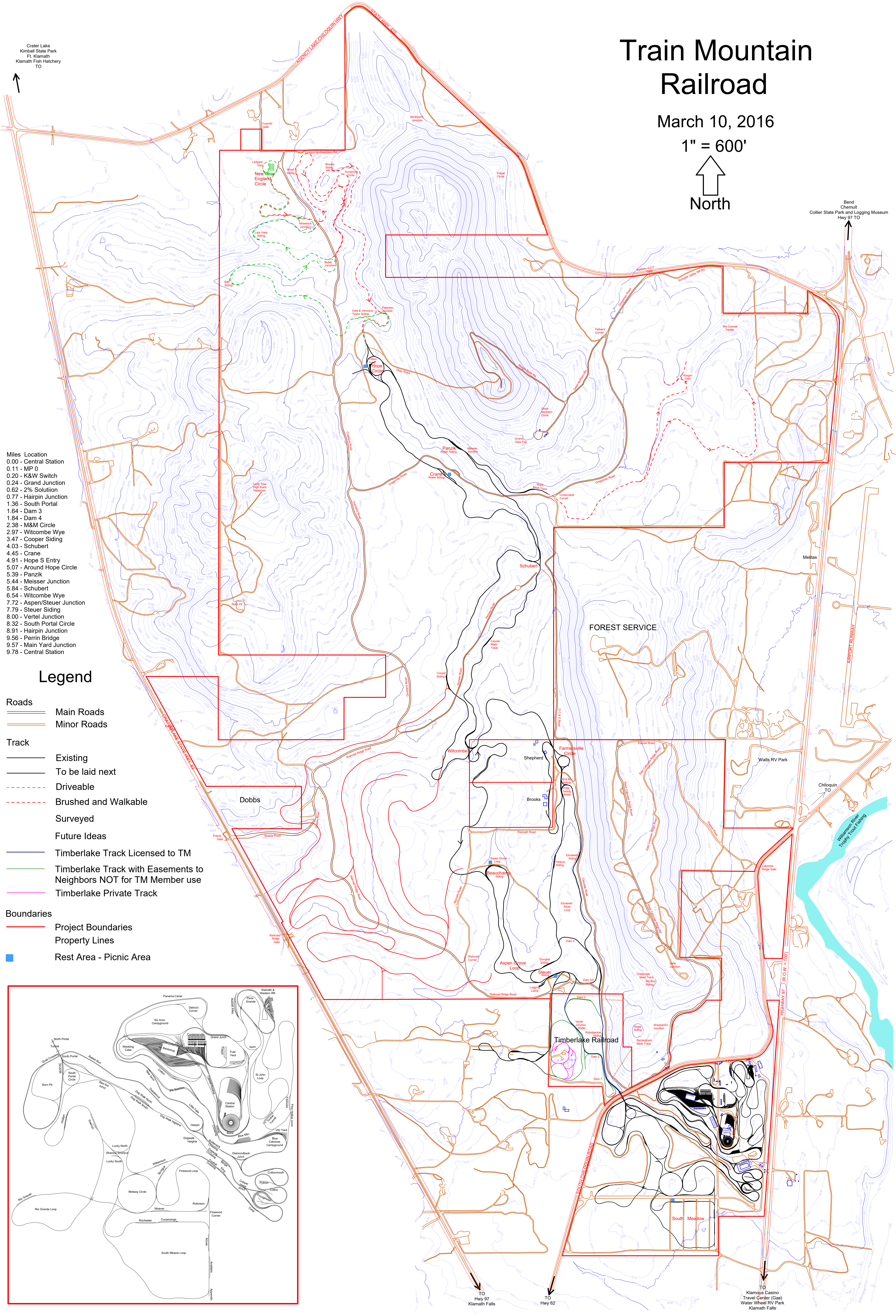
1" = 600'



North

Crater Lake
Kimball State Park
Fl. Klamath
Klamath Fish Hatchery
TO

Bend
Chemult
Collier State Park and Logging Museum
Hwy 97 TO

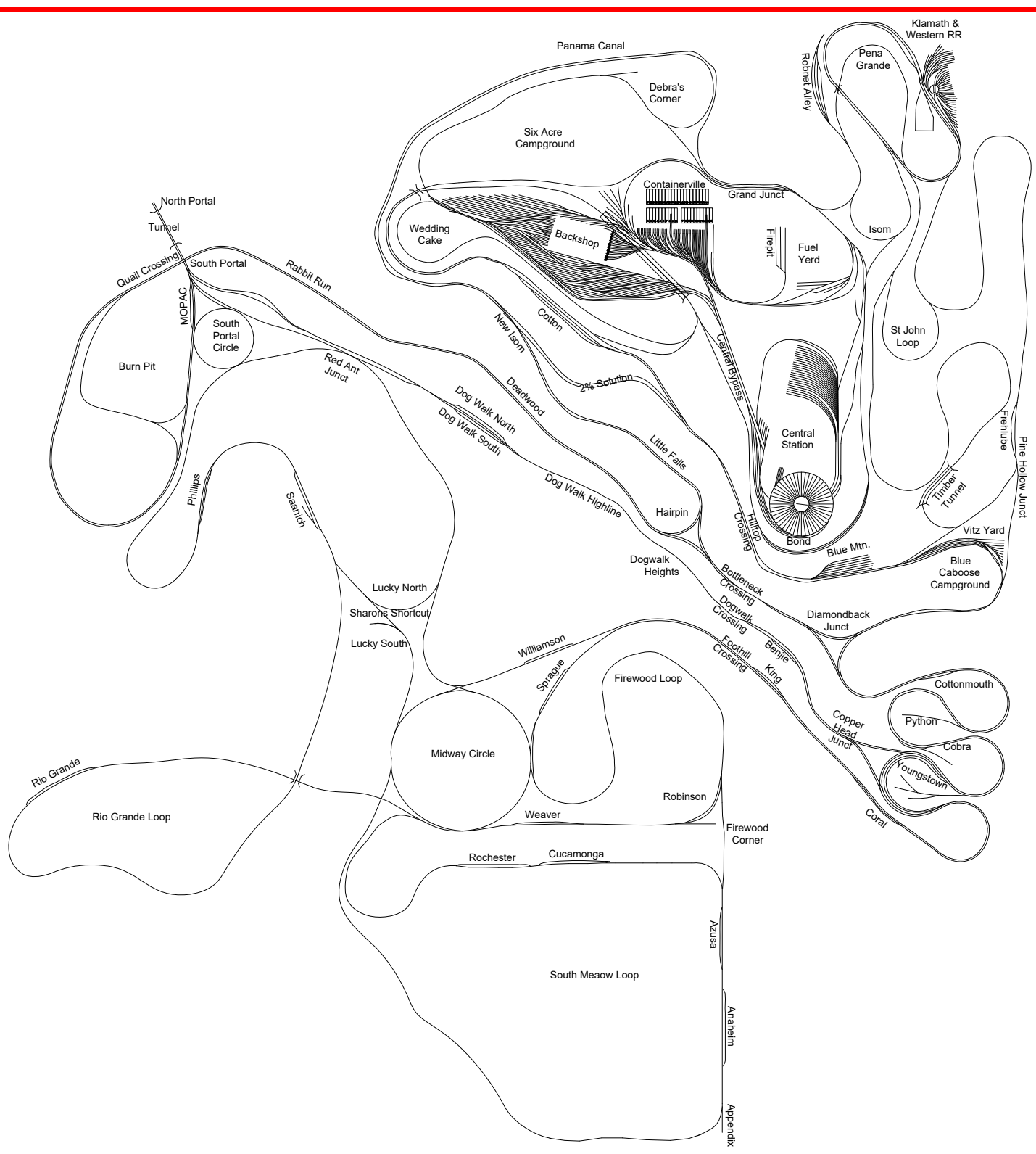


Miles Location

0.00 - Central Station
0.11 - MP 0
0.20 - K&W Switch
0.24 - Grand Junction
0.62 - 2% Solution
0.77 - Hairpin Junction
1.36 - South Portal
1.64 - Dam 3
1.84 - Dam 4
2.38 - M&M Circle
2.97 - Witcombe Wye
3.47 - Cooper Siding
4.03 - Schubert
4.45 - Crane
4.91 - Hope S Entry
5.07 - Around Hope Circle
5.39 - Panzik
5.44 - Meisser Junction
5.84 - Schubert
6.54 - Witcombe Wye
7.72 - Aspen/Steuer Junction
7.79 - Steuer Siding
8.00 - Vertel Junction
8.32 - South Portal Circle
8.91 - Hairpin Junction
9.56 - Perrin Bridge
9.57 - Main Yard Junction
9.78 - Central Station

Legend

- Roads**
- Main Roads
 - Minor Roads
- Track**
- Existing
 - To be laid next
 - Driveable
 - Brushed and Walkable
 - Surveyed
 - Future Ideas
 - Timberlake Track Licensed to TM
 - Timberlake Track with Easements to Neighbors NOT for TM Member use
 - Timberlake Private Track
- Boundaries**
- Project Boundaries
 - Property Lines
 - Rest Area - Picnic Area



TO Hwy 97 Klamath Falls

TO Hwy 62

TO Klamaya Casino
Travel Center (Gas)
Water Wheel RV Park
Klamath Falls